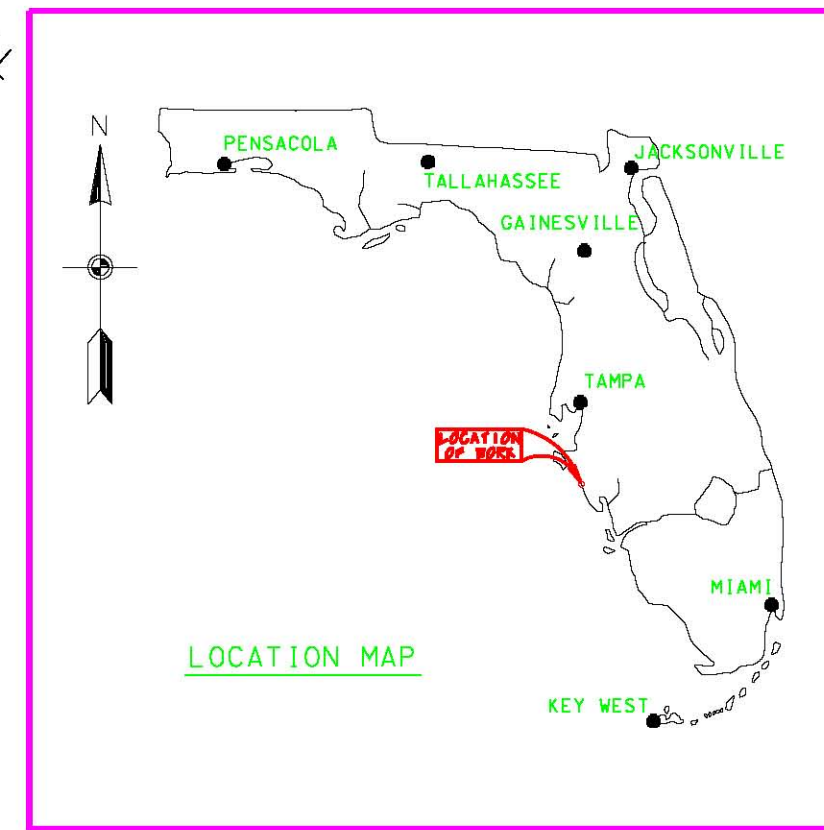


VENICE INLET, CASEYS PASS & INTRACOASTAL WATERWAY, CUTS 1-4 & CALOOSA HATCHEE RIVER TO ANCLOTE RIVER CUTS S-19 THRU S-21 AND S-36 THRU S-37 PROJECT CONDITION SURVEY



US Army Corps of Engineers
Jacksonville District

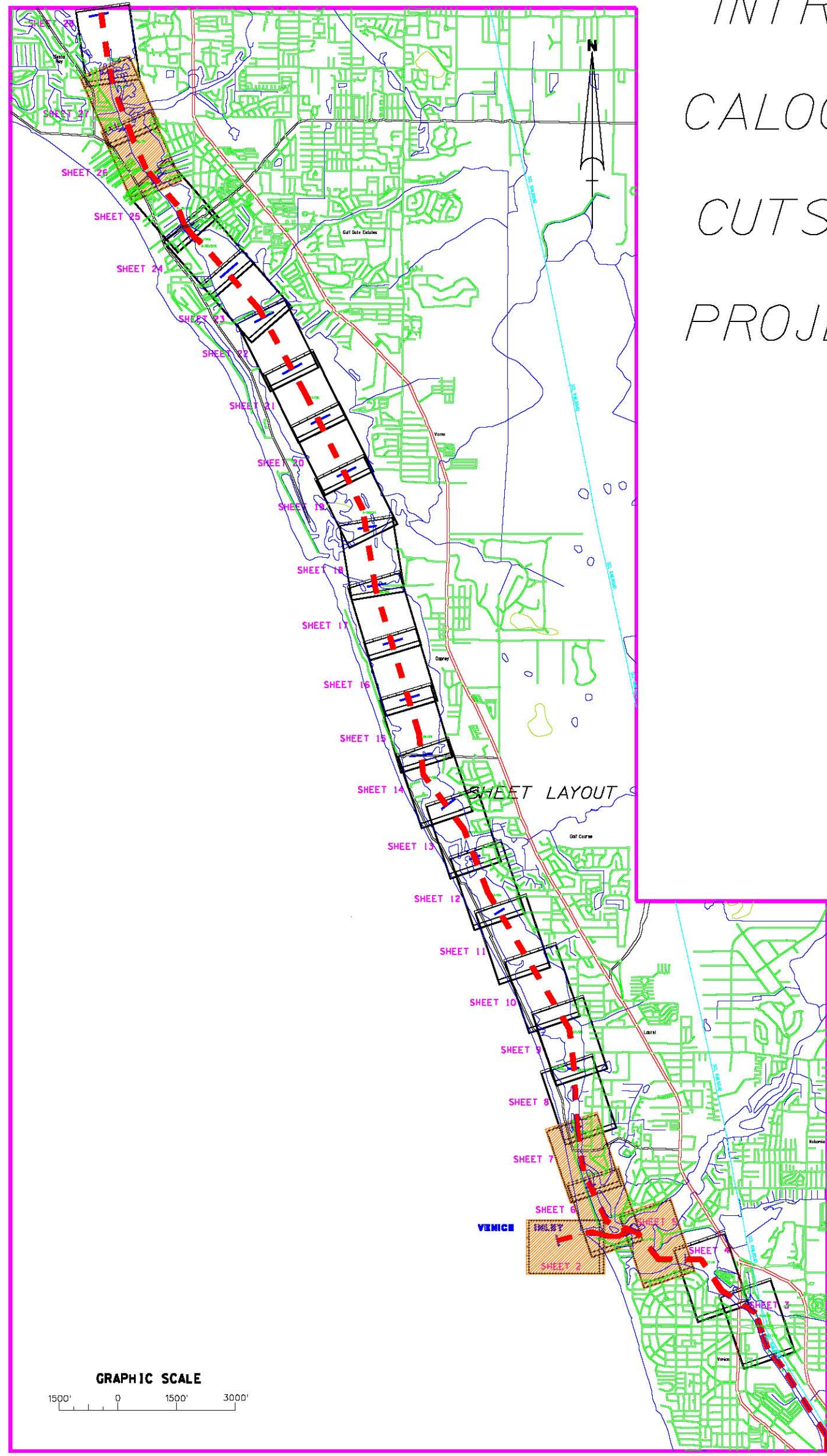
SAFETY ON THIS JOB DEPENDS ON YOU

DEPARTMENT OF THE ARMY
JACKSONVILLE DISTRICT
JACKSONVILLE, FLORIDA

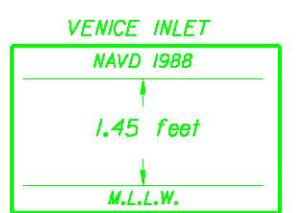
INTRACOASTAL WATERWAY CALOOSA HATCHEE RIVER TO ANCLOTE RIVER PROJECT CONDITION SURVEY 9-FOOT PROJECT INDEX, LOCATION AND VICINITY PLAN

DRAWING NO.
1/7

SHEET 1 OF 28



BENCHMARK	NAVD ELEV. (FT)
R-115 RESET	4.30
NOS 6045C 1977	3.98

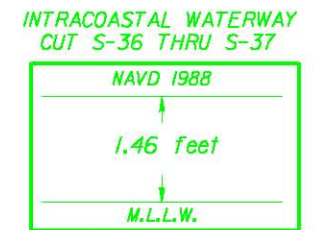


Relationship between NAVD 1988 and NOAA Mean Lower Low Water Tidal Datum (1960-1978 epoch)



Relationship between NAVD 1988 and NOAA Mean Lower Low Water Tidal Datum (1960-1978)

LEGEND	
⊙ BM	BENCHMARK
⚡	LIGHTED BEACON
■	GREEN DAYBEACON
▲	RED DAYBEACON
⚓	RED LIGHTED BUOY
⚓	GREEN LIGHTED BUOY
⚓	CAN BUOY
⚓	NUM BUOY
⚓	TIDE STAFF



Relationship between NAVD 1988 and NOAA Mean Lower Low Water Tidal Datum (1960-1978)

- SURVEY NOTES:**
- REFER TO SURVEY NO. 08-104.
 - SOUNDINGS ARE IN FEET AND TENTHS AND REFER TO MEAN LOWER LOW WATER (MLLW). REFER TO TABLES SHOWN FOR DIFFERENCES BELOW NAVD 1988.
 - ALL ELEVATIONS ARE BELOW THE CHART DATUM UNLESS PRECEDED BY A (+) SIGN.
 - TIDAL REDUCTIONS WERE MADE FROM STAFFS SET ON A WOODEN PILING OF RDB-2A AND REFERENCED FROM BENCHMARK "R-115 RESET" FOR CUTS 1-4 AND S-19 THRU S-21, AND FROM A MEASURE DOWN POINT IN THE VICINITY OF, AND REFERENCED FROM BENCHMARK "NOS 6045C 1977" FOR CUTS S-36 AND S-37.
 - PLANE COORDINATES ARE BASED ON THE TRANSVERSE MERCATOR PROJECTION FOR THE WEST ZONE OF FLORIDA AND REFERENCED TO NORTH AMERICAN DATUM OF 1983 (NAD83).
 - ALL AZIMUTHS ARE GRID; RECKONED CLOCKWISE FROM SOUTH.
 - ALL STATIONING REFERS TO THE CENTERLINE OF THE CHANNEL.
 - SURVEY WAS PERFORMED USING DIFFERENTIAL GPS FOR POSITIONING AND UTILIZING THE USCG NAVBEACON SYSTEM AS THE REFERENCE SITE. VERTICAL MEASUREMENTS WERE MADE USING A ROSS SMART SOUNDER DEPTH RECORDER WITH A 200KHZ (HIGH FREQUENCY) TRANSDUCER.
- | VESSEL | DATE OF SURVEY | CUT |
|-----------|----------------|--|
| GANNET II | 23-24 APR 2008 | IWW CUTS S-19 - S-21, IWW CUTS S-36, S-37, VENICE INLET CUTS 1-4 |
- AIDS TO NAVIGATION WERE LOCATED DURING THIS SURVEY.
 - THE INFORMATION DEPICTED ON THIS MAP REPRESENTS THE RESULTS OF SURVEYS MADE ON THE DATES INDICATED ABOVE AND CAN ONLY BE CONSIDERED AS INDICATING THE GENERAL CONDITIONS AT THAT TIME. THIS CHART IS SOLELY FOR THE DISTRIBUTION OF AVAILABLE DEPTHS AT THE TIME OF THE SURVEY AND IS NOT TO BE USED FOR NAVIGATION.
 - SURVEY ACCURACY PERFORMANCE STANDARDS, QUALITY CONTROL, AND QUALITY ASSURANCE REQUIREMENTS WERE FOLLOWED DURING THIS SURVEY IN ACCORDANCE WITH USACE EM 110-2-1003, HYDROGRAPHIC SURVEYS, 01 APR 04.

AIDS TO NAVIGATION	PLANE COORDINATES		LATITUDE	LONGITUDE
	X	Y		
LT-13 (04/08)	507,518	1,009,026	27°06'32.02"	82°27'25.00"
DBN-14 (04/08)	507,343	1,009,538	27°06'37.09"	82°27'26.96"
DBN-15 (04/08)	506,683	1,010,118	27°06'42.81"	82°27'34.29"
LT-16 (04/08)	506,489	1,010,529	27°06'46.87"	82°27'36.45"
DBN-17 (04/08)	506,306	1,010,436	27°06'45.94"	82°27'38.47"
PRIV BUOY-1 (04/08)	507,160	1,009,352	27°06'35.24"	82°27'28.98"
PRIV BUOY-2 (04/08)	507,119	1,009,464	27°06'36.35"	82°27'29.44"
PRIV BUOY-3 (04/08)	507,051	1,009,313	27°06'34.85"	82°27'30.18"
PRIV BUOY-4 (04/08)	506,971	1,009,423	27°06'35.93"	82°27'31.07"
SIGN (04/08)	507,103	1,009,327	27°06'34.99"	82°27'29.61"
SIGN (04/08)	506,731	1,010,369	27°06'45.30"	82°27'33.77"
SIGN (04/08)	506,511	1,010,227	27°06'43.88"	82°27'36.19"
SIGN (04/08)	507,285	1,009,922	27°06'40.89"	82°27'27.62"
SIGN (04/08)	507,179	1,009,838	27°06'40.05"	82°27'28.79"
SIGN (04/08)	507,007	1,010,075	27°06'42.40"	82°27'30.71"

US Army Corps of Engineers
Jacksonville District

SAFETY ON THIS JOB
DEPENDS ON YOU

DEPARTMENT OF THE ARMY
CORPS OF ENGINEERS
JACKSONVILLE, FLORIDA

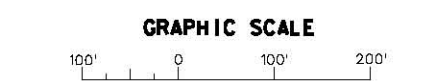
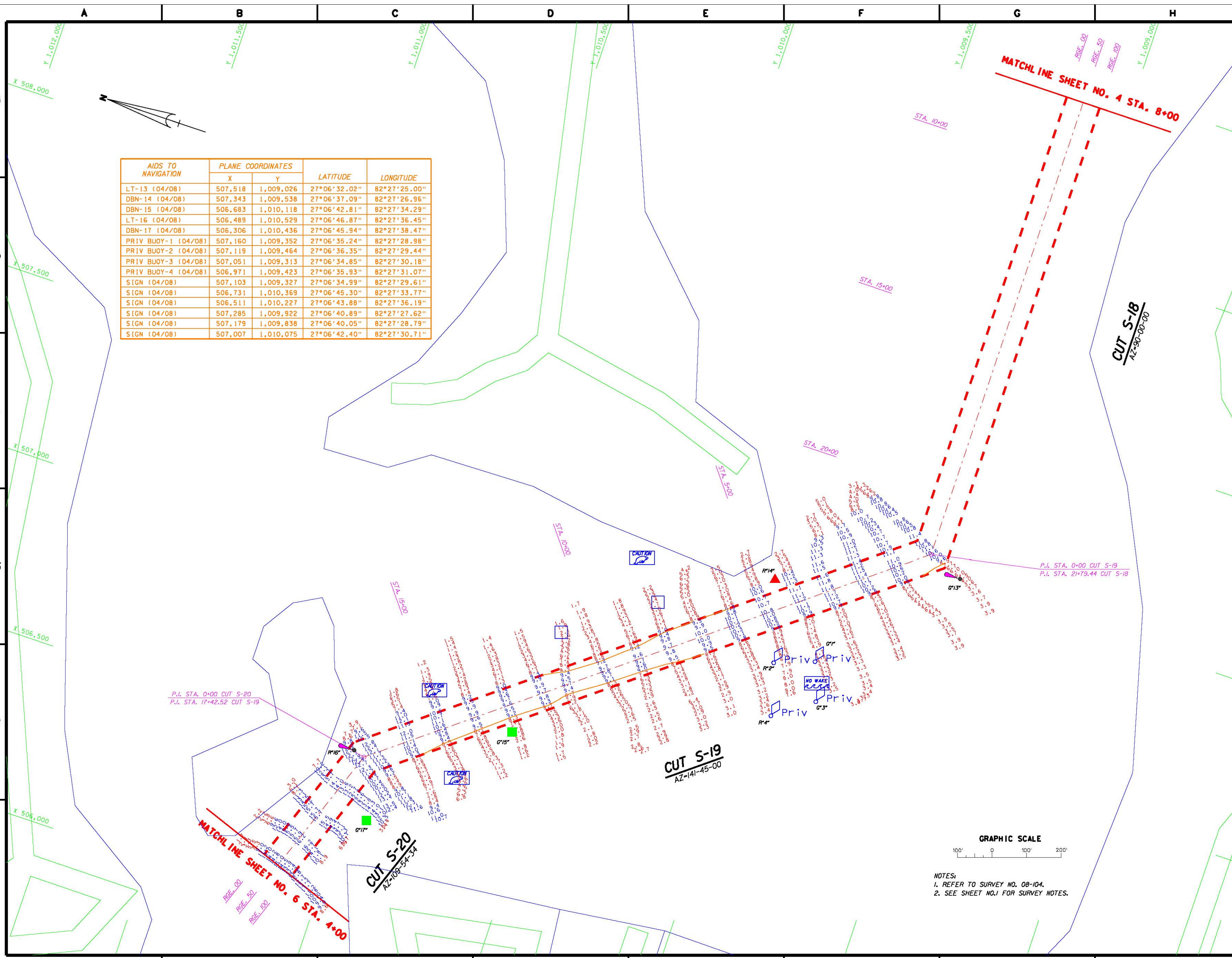
Rev. No.	DATE	BY	DESCRIPTION

DESIGNED BY:
 DRAWN BY:
 CHECKED BY:
 IN CHARGE:
 DATE:
 PROJECT NO.
 DRAWING NO.
 SHEET NO.
 OF
 SHEETS

INTRACASTAL WATERWAY
CALOOSAHATCHEE RIVER TO ANCLOTE RIVER, FL.
PROJECT CONDITION SURVEY
9-FOOT PROJECT
STA. 8+00 CUT S-18 THRU STA. 4+00 CUT S-20
PLAN

DRAWING NO.
3/7

SHEET 3 of 28



NOTES:
1. REFER TO SURVEY NO. 08-104.
2. SEE SHEET NO.1 FOR SURVEY NOTES.

