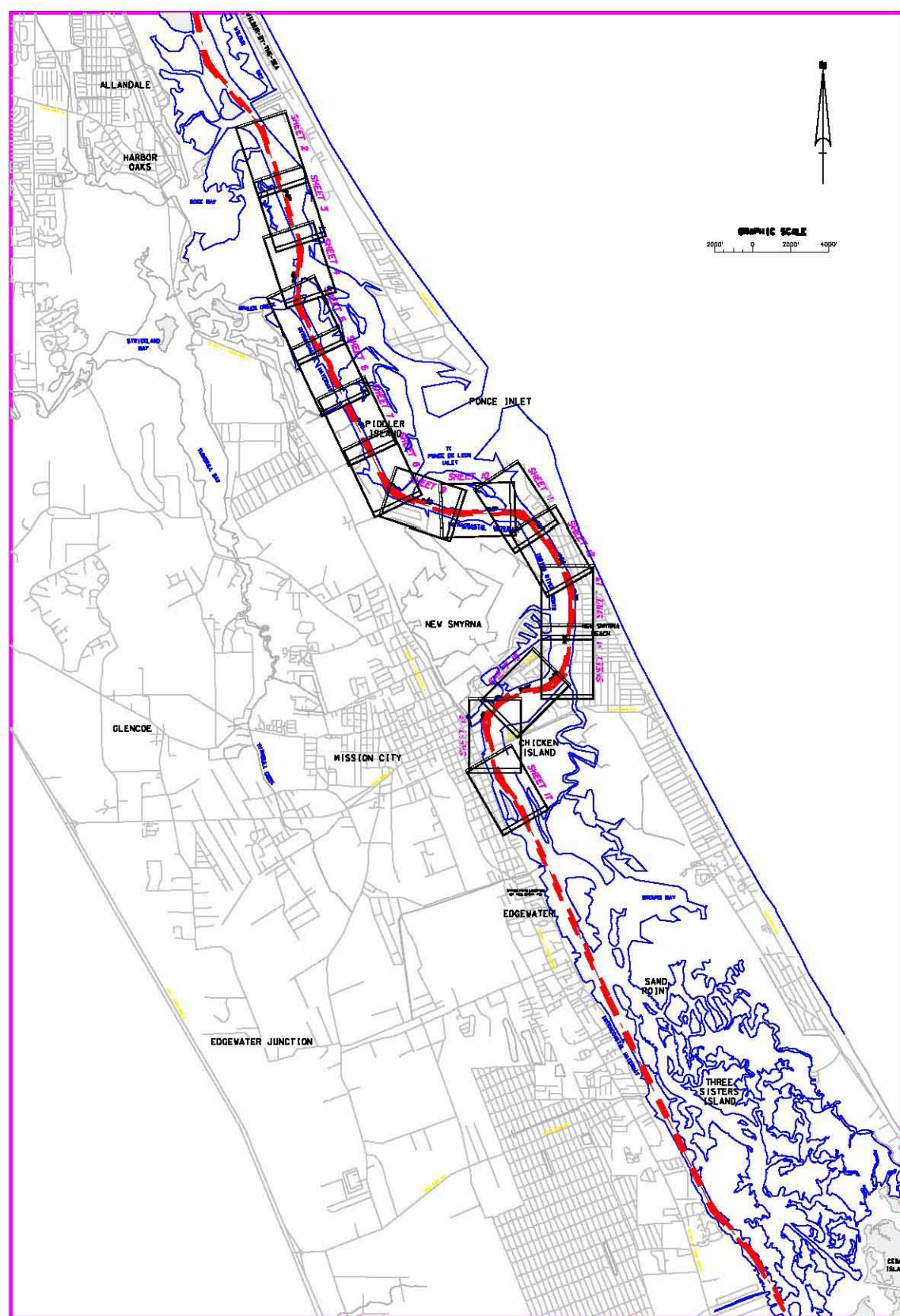


# INTRACOASTAL WATERWAY JACKSONVILLE TO MIAMI, FLORIDA CUTS V-22 THRU V-36 PROJECT CONDITION SURVEY



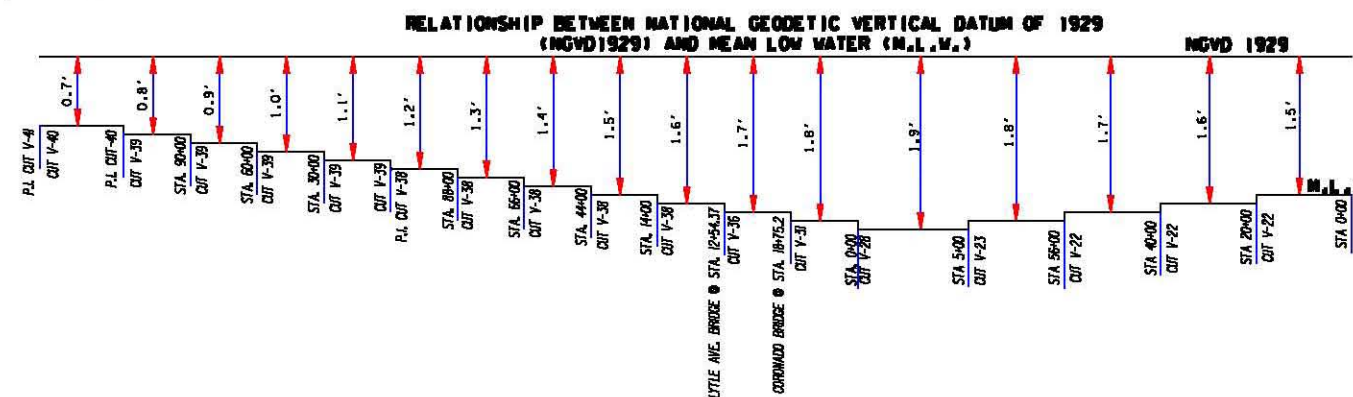
### SURVEY NOTES:

- REFER TO SURVEY NO. 07-080.
  - ELEVATIONS ARE IN FEET AND TENTHS AND REFER TO MEAN LOW WATER. REFER TO DATUM TABLE THIS SHEET FOR DIFFERENCES FROM NGVD 1929.
  - ALL ELEVATIONS ARE BELOW THE CHART DATUM UNLESS PRECEDED BY A (+) SIGN.
  - TIDAL REDUCTIONS WERE MADE FROM MULTIPLE BENCHMARKS. REFER TO SURVEY TABULATION SHOWN ON THIS SHEET.
  - PLANE COORDINATES ARE BASED ON THE TRANSVERSE MERCATOR PROJECTION FOR THE EAST ZONE OF FLORIDA AND REFERENCED TO NORTH AMERICAN DATUM OF 1927 (NAD27).
  - ALL AZIMUTHS ARE GRID; RECKONED CLOCKWISE FROM SOUTH.
  - ALL STATIONING REFERS TO THE CENTERLINE OF THE CHANNEL.
  - SURVEY WAS PERFORMED USING DIFFERENTIAL GPS FOR POSITIONING AND UTILIZING THE USCG NAVBEACON SYSTEM AS THE REFERENCE SITE. VERTICAL MEASUREMENTS WERE MADE USING A ROSS SMART SOUNDER DEPTH RECORDER WITH A 200KHZ (HIGH FREQUENCY) TRANSDUCER.
- | VESSEL | DATE OF SURVEY        | CUT                 |
|--------|-----------------------|---------------------|
| WB-34  | 17-19, 25-27 JUL 2007 | CUTS V-22 THRU V-36 |
- AIDS TO NAVIGATION WERE LOCATED DURING THIS SURVEY.
  - THE INFORMATION DEPICTED ON THIS MAP REPRESENTS THE RESULTS OF SURVEYS MADE ON THE DATES INDICATED ABOVE AND CAN ONLY BE CONSIDERED AS INDICATING THE GENERAL CONDITIONS AT THAT TIME. THIS CHART IS SOLELY FOR THE DISTRIBUTION OF AVAILABLE DEPTHS AT THE TIME OF THE SURVEY AND IS NOT TO BE USED FOR NAVIGATION.
  - SURVEY ACCURACY PERFORMANCE STANDARDS, QUALITY CONTROL, AND QUALITY ASSURANCE REQUIREMENTS WERE FOLLOWED DURING THIS SURVEY IN ACCORDANCE WITH USACE EM 1119-2-1003, HYDROGRAPHIC SURVEYING, 1 JAN 2002

SURVEY TABULATION			
VESSEL	AREA SURVEYED	STAFF LOCATION	BENCHMARK
WB-34	CUT V-22 THRU V-24	VICINITY OF BOODOCKS RESTAURANT	DWR 79-78-A38
WB-34	CUT V-24 THRU V-27	VICINITY OF BM "LITHA"	LITHA
WB-34	CUT V-28 THRU V-31	WOODEN PILING @ USCG STA. PONCE INLET	PD1-26
WB-34	CUT V-31 THRU V-36	DOCK PILING IN VICINITY OF HW-37	HW-37

BENCHMARK	NGVD ELEV. (FT)
79-78-A38	17.46
LITHA	6.30
PD1-26	4.69
HW-37	14.03

LEGEND	
• BM	BENCHMARK
⬆	LIGHTED BEACON
■	GREEN DAYBEACON
▲	RED DAYBEACON
●	RED LIGHTED BUOY
●	GREEN LIGHTED BUOY
⊕	CAN BUOY
⊙	NUN BUOY
⊕	TIDE STAFF



SAFETY ON THIS JOB DEPENDS ON YOU

DEPARTMENT OF THE ARMY  
CORPS OF ENGINEERS  
JACKSONVILLE, FLORIDA

Drawn by: [Name]  
Checked by: [Name]  
Scale: AS SHOWN  
Plot Date: [Date]  
Plot Scale: [Scale]

INTRACOASTAL WATERWAY  
JACKSONVILLE TO MIAMI, FLORIDA  
PROJECT CONDITION SURVEY  
12-FOOT PROJECT  
COVER, LOCATION AND INDEX SHEET  
PLAN

DRAWING NO.  
**1/17**  
SHEET 1 OF 26



No.	Symbol	Zone

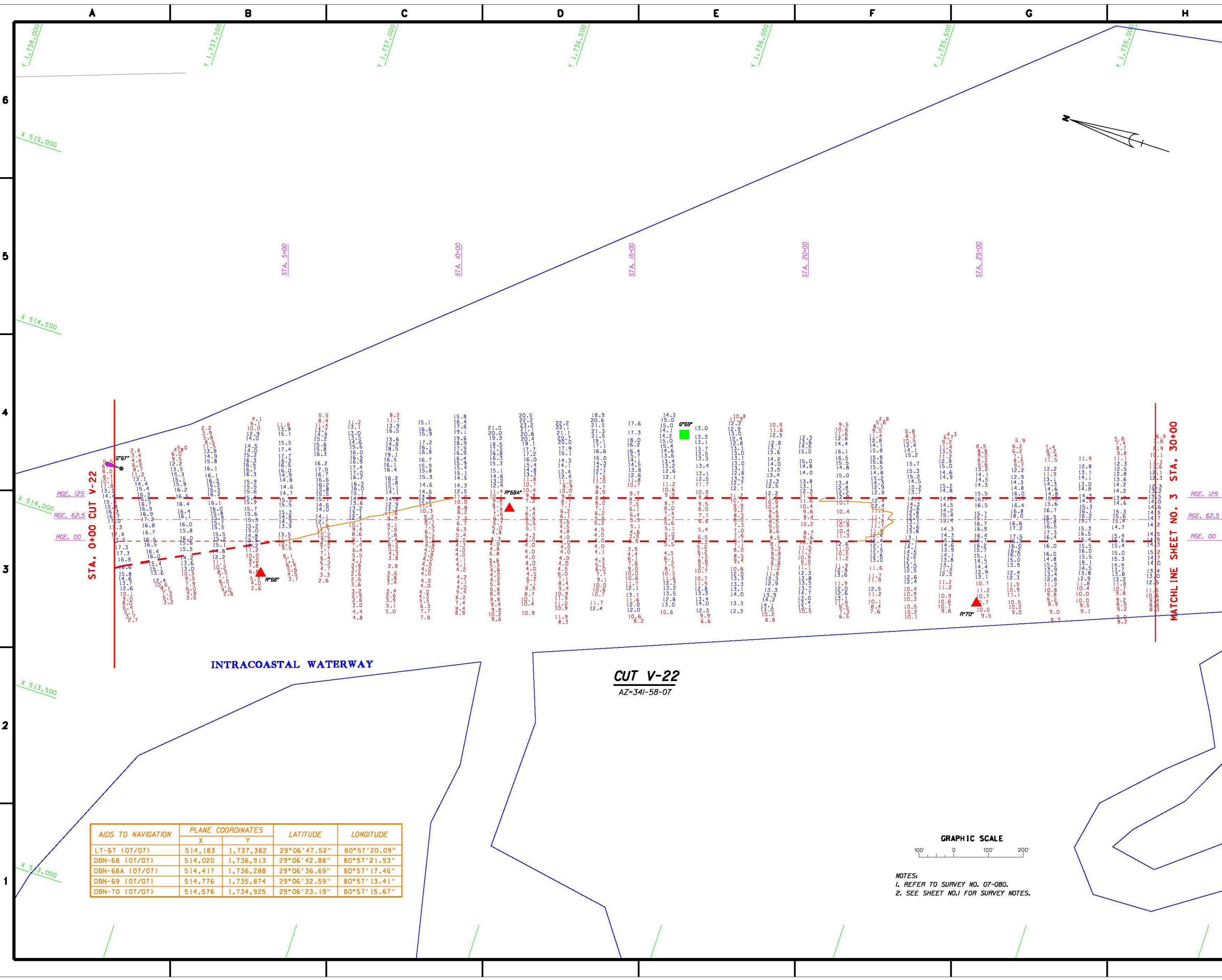
DEPARTMENT OF THE ARMY  
CORPS OF ENGINEERS  
JACKSONVILLE, FLORIDA

Described by:  
Drawn by:  
Checked by:  
Scale: AS SHOWN  
Plot scale: AS SHOWN  
Plot notes: AS SHOWN

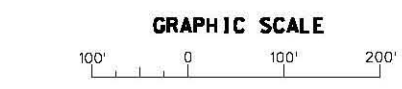
File name:  
Reference file:  
Project:  
Sheet:

INTRACOASTAL WATERWAY  
JACKSONVILLE TO MIAMI, FLORIDA  
PROJECT CONDITION SURVEY  
12-FOOT PROJECT  
STA. 0+00 THRU STA. 30+00 CUT V-22  
PLAN

DRAWING NO.  
**2/17**  
SHEET **2** OF **28**



AIDS TO NAVIGATION	PLANE COORDINATES		LATITUDE	LONGITUDE
	X	Y		
LT-67 (07/07)	514,183	1,737,382	29°06'47.52"	80°57'20.09"
DBN-68 (07/07)	514,020	1,736,913	29°06'42.88"	80°57'21.93"
DBN-68A (07/07)	514,417	1,736,288	29°06'36.69"	80°57'17.46"
DBN-69 (07/07)	514,776	1,735,874	29°06'32.59"	80°57'13.41"
DBN-70 (07/07)	514,576	1,734,925	29°06'23.19"	80°57'15.67"



- NOTES:  
1. REFER TO SURVEY NO. 07-080.  
2. SEE SHEET NO.1 FOR SURVEY NOTES.



SAFETY ON THIS JOB  
DEPENDS ON YOU

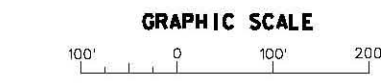
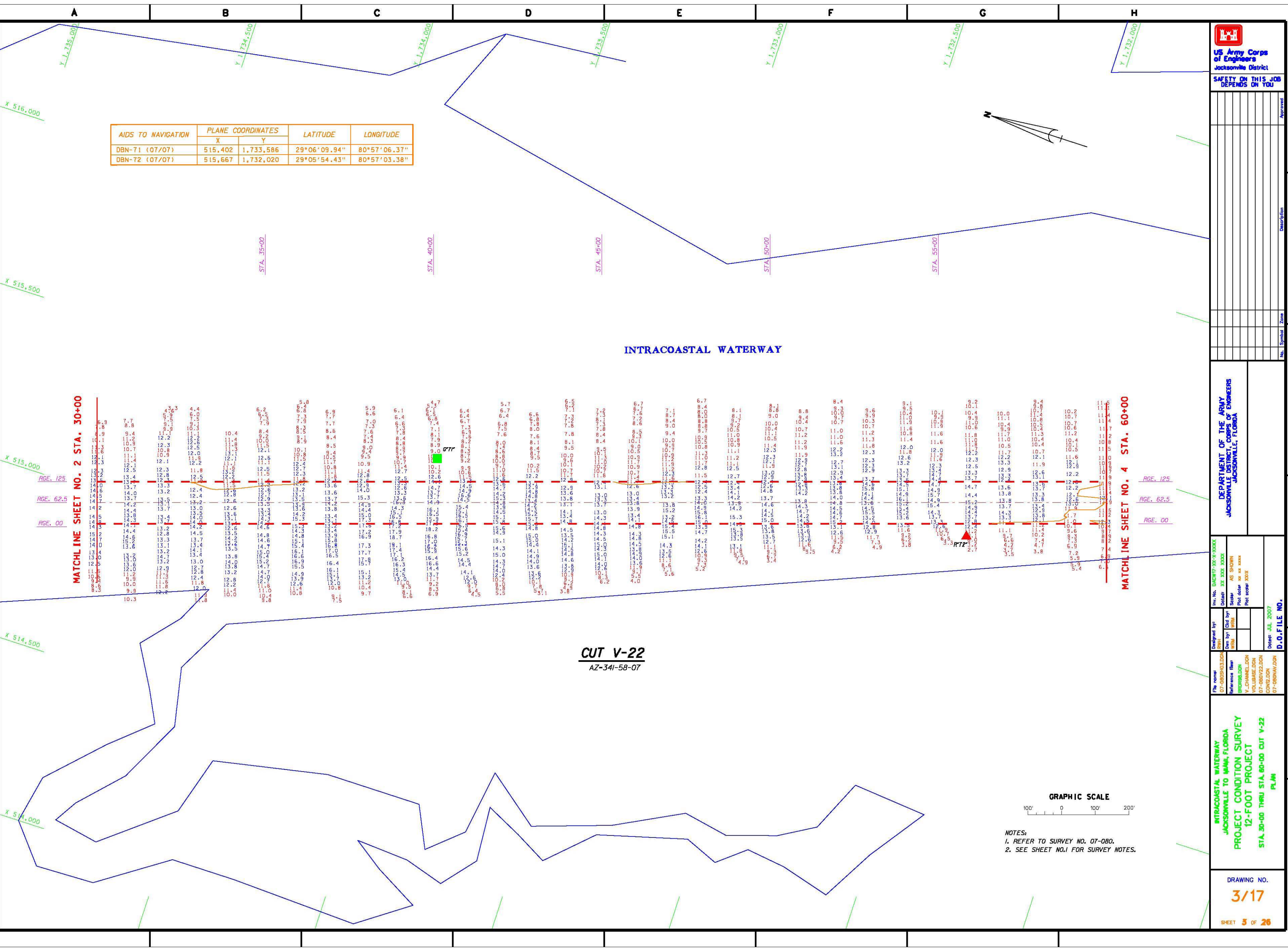
AIDS TO NAVIGATION	PLANE COORDINATES		LATITUDE	LONGITUDE
	X	Y		
DBN-71 (07/07)	515,402	1,733,586	29°06'09.94"	80°57'06.37"
DBN-72 (07/07)	515,667	1,732,020	29°05'54.43"	80°57'03.38"

### INTRACOASTAL WATERWAY

**CUT V-22**  
AZ-341-58-07

**MATCHLINE SHEET NO. 2 STA. 30+00**  
RGE. 125  
RGE. 62.5  
RGE. 00

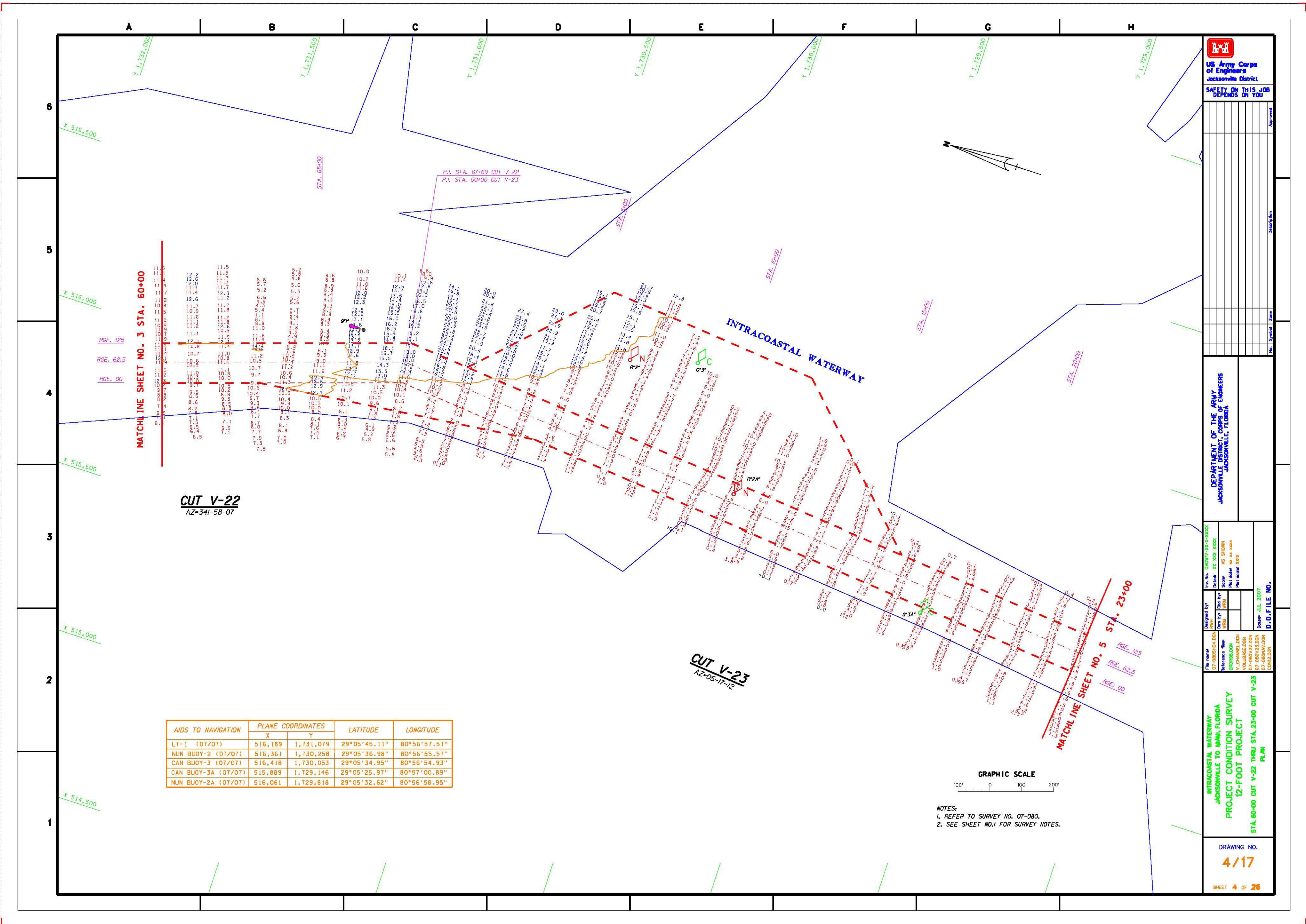
**MATCHLINE SHEET NO. 4 STA. 60+00**  
RGE. 125  
RGE. 62.5  
RGE. 00



NOTES:  
 1. REFER TO SURVEY NO. 07-080.  
 2. SEE SHEET NO.1 FOR SURVEY NOTES.

Approved	No.	Symbol	Zone
DEPARTMENT OF THE ARMY JACKSONVILLE DISTRICT JACKSONVILLE, FLORIDA			
Inv. No. DUCR-23-3-000X Date 03 03 000X Scale AS SHOWN Plot scale 10:1 Plot record 300X	Designed by Drawn by Reference Plan CONSTRUCTION D.O.F FILE NO.		
INTRACOASTAL WATERWAY JACKSONVILLE TO MIAMI, FLORIDA PROJECT CONDITION SURVEY 12-FOOT PROJECT STA. 30+00 THRU STA. 60+00 CUT V-22 PLAN			
DRAWING NO.			
<b>3/17</b>			
SHEET 3 of 26			

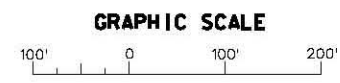




AIDS TO NAVIGATION	PLANE COORDINATES		LATITUDE	LONGITUDE
	X	Y		
LT-1 (07/07)	516,189	1,731,079	29°05'45.11"	80°56'57.51"
NUN BUOY-2 (07/07)	516,361	1,730,258	29°05'36.98"	80°56'55.57"
CAN BUOY-3 (07/07)	516,418	1,730,053	29°05'34.95"	80°56'54.93"
CAN BUOY-3A (07/07)	515,889	1,729,146	29°05'25.97"	80°57'00.89"
NUN BUOY-2A (07/07)	516,061	1,729,818	29°05'32.62"	80°56'58.95"

**CUT V-22**  
AZ-341-58-07

**CUT V-23**  
AZ-05-17-12



NOTES:  
1. REFER TO SURVEY NO. 07-080.  
2. SEE SHEET NO. J FOR SURVEY NOTES.



US Army Corps of Engineers  
Jacksonville District

SAFETY ON THIS JOB  
DEPENDS ON YOU

No.	Symbol	Zone	Description

DEPARTMENT OF THE ARMY  
CORPS OF ENGINEERS  
JACKSONVILLE, FLORIDA

Drawn by: [blank]	Checked by: [blank]	Scale: AS SHOWN
Reference: [blank]	File name: [blank]	Plot scale: [blank]
Project: [blank]	Date: 04-20-07	Sheet: [blank]

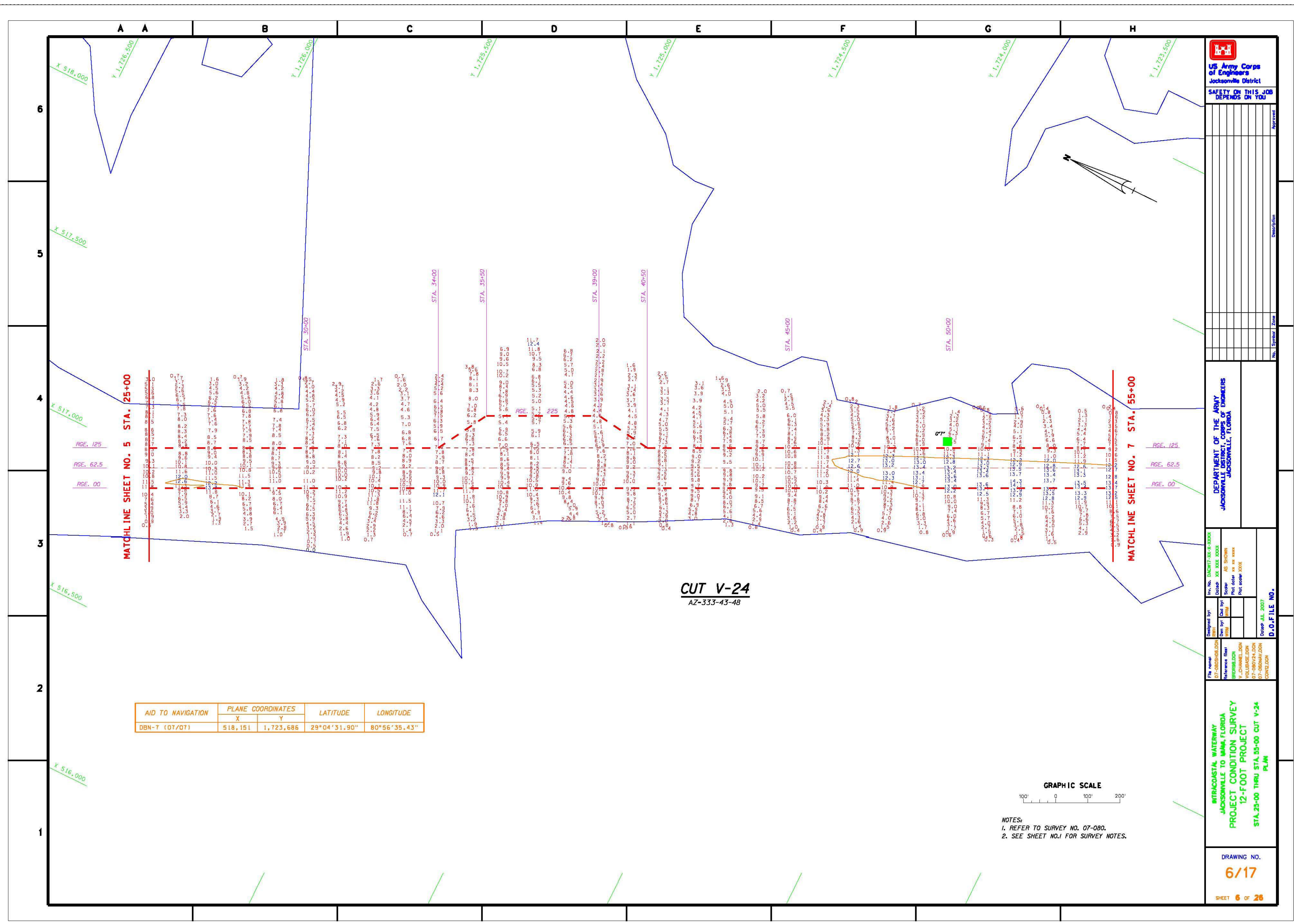
INTRACOASTAL WATERWAY  
JACKSONVILLE TO MAHA, FLORIDA  
PROJECT CONDITION SURVEY  
12-FOOT PROJECT  
STA. 60+00 CUT V-22 THRU STA. 23+00 CUT V-23  
PLAN

DRAWING NO.  
**4/17**  
SHEET 4 OF 26

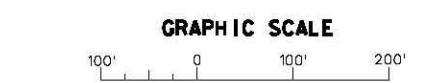








AID TO NAVIGATION	PLANE COORDINATES		LATITUDE	LONGITUDE
	X	Y		
DBN-T (07/Q7)	518,151	1,723,686	29°04'31.90"	80°56'35.43"



NOTES:  
1. REFER TO SURVEY NO. 07-080.  
2. SEE SHEET NO. 1 FOR SURVEY NOTES.





SAFETY ON THIS JOB DEPENDS ON YOU

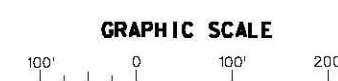
Approved	No.	Symbol	Zone

**DEPARTMENT OF THE ARMY**  
JACKSONVILLE DISTRICT  
JACKSONVILLE, FLORIDA

Drawn by: **DBN**  
Checked by: **DBN**  
Scale: **AS SHOWN**  
Plot scale: **AS IS**  
Plot speed: **3000**

**INTRACOSTAL WATERWAY**  
**JACKSONVILLE TO MAHA, FLORIDA**  
**PROJECT CONDITION SURVEY**  
**12-FOOT PROJECT**  
**STA. 55+00 THRU STA. 85+00 CUT V-24**  
**PLAN**

DRAWING NO.  
**7/17**  
SHEET **7** OF **26**



NOTES:  
1. REFER TO SURVEY NO. 07-080.  
2. SEE SHEET NO.1 FOR SURVEY NOTES.

AIDS TO NAVIGATION	PLANE COORDINATES		LATITUDE	LONGITUDE
	X	Y		
DBN-8 (07/07)	519,125	1,721,285	29°04'08.13"	80°56'24.46"
SIGN (07/07)	519,064	1,721,262	29°04'07.90"	80°56'25.16"

**CUT V-24**  
AZ-333-43-48

**REDLAND CANAL**

**MATCHLINE SHEET NO. 6 STA. 55+00**

**MATCHLINE SHEET NO. 8 STA. 85+00**

RGE. 125  
RGE. 62.5  
RGE. 00

RGE. 125  
RGE. 62.5  
RGE. 00

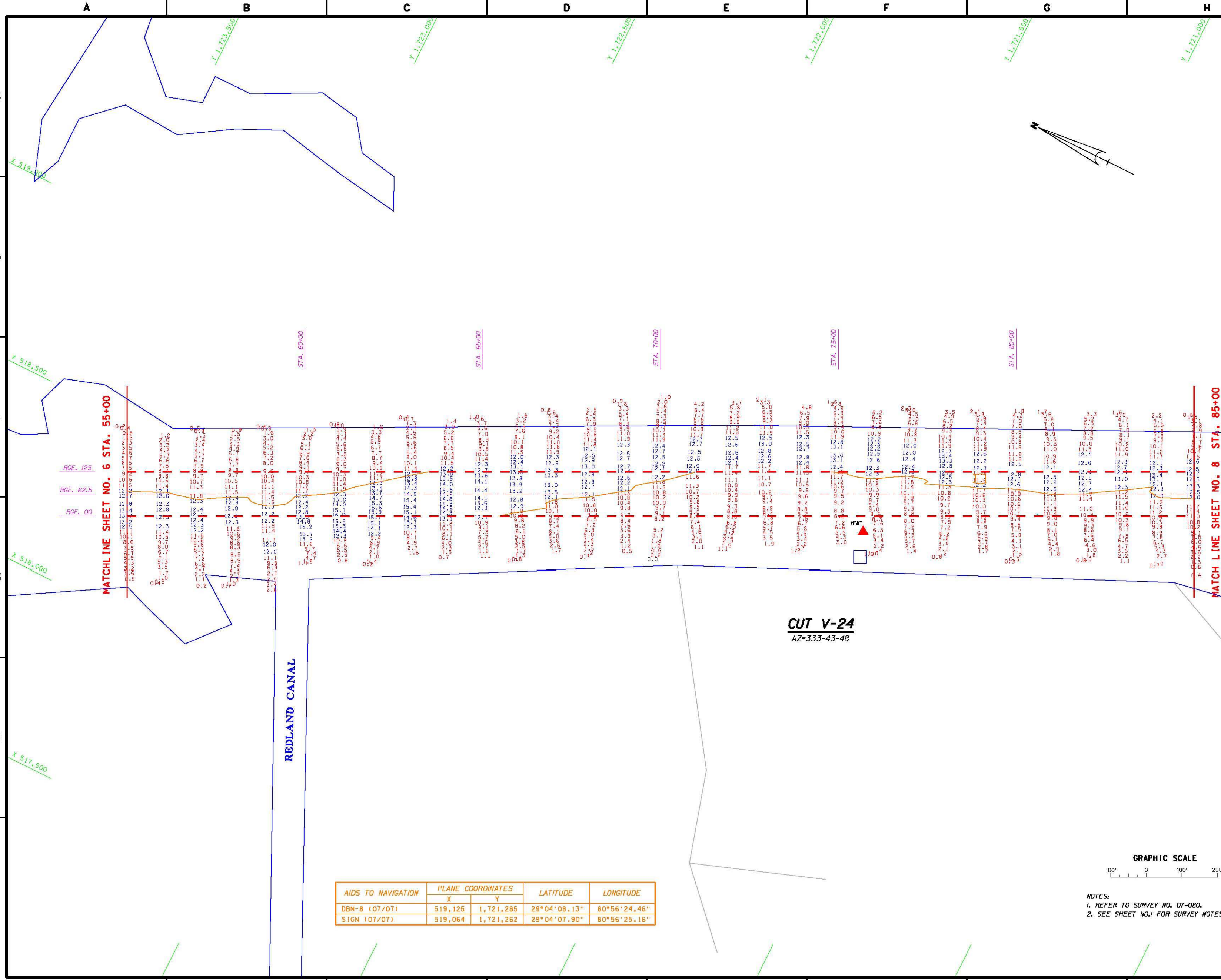
STA. 60+00

STA. 65+00

STA. 70+00

STA. 75+00

STA. 80+00





AIDS TO NAVIGATION	PLANE COORDINATES		LATITUDE	LONGITUDE
	X	Y		
LT-10 (07/07)	520,765	1,718,002	29°03'35.61"	80°56'06.05"
TIDESTAFF (07/07)	520,567	1,718,270	29°03'38.27"	80°56'08.23"

**CUT V-24**  
AZ-333-43-48  
INTRACOASTAL WATERWAY

**GRAPHIC SCALE**  
100' 0 100' 200'

NOTES:  
1. REFER TO SURVEY NO. 07-080.  
2. SEE SHEET NO. 1 FOR SURVEY NOTES.



No.	Symbol	Zone

DEPARTMENT OF THE ARMY  
CORPS OF ENGINEERS  
JACKSONVILLE DISTRICT  
JACKSONVILLE, FLORIDA

Inv. No. 142107-33-9-000X  
Date: 06 DEC 2008  
Scale: AS SHOWN  
Plot date: as axes  
Plot scale: X000  
Desig. by: MHN  
Date: 07/07/08  
Checked: MHN  
Date: 08/07/08  
D.O.F. FILE NO.

INTRACOASTAL WATERWAY  
JACKSONVILLE TO MIAMI, FLORIDA  
PROJECT CONDITION SURVEY  
12-FOOT PROJECT  
STA. 85+00 CUT V-24 THRU STA. 5+00 CUT V-25  
PLAN

DRAWING NO.  
**8/17**  
SHEET 8 OF 26

MATCHLINE SHEET NO. 7 STA. 85+00

MATCHLINE SHEET NO. 9 STA. 5+00

RGE. 125  
RGE. 62.5  
RGE. 00

RGE. 125  
RGE. 62.5  
RGE. 00

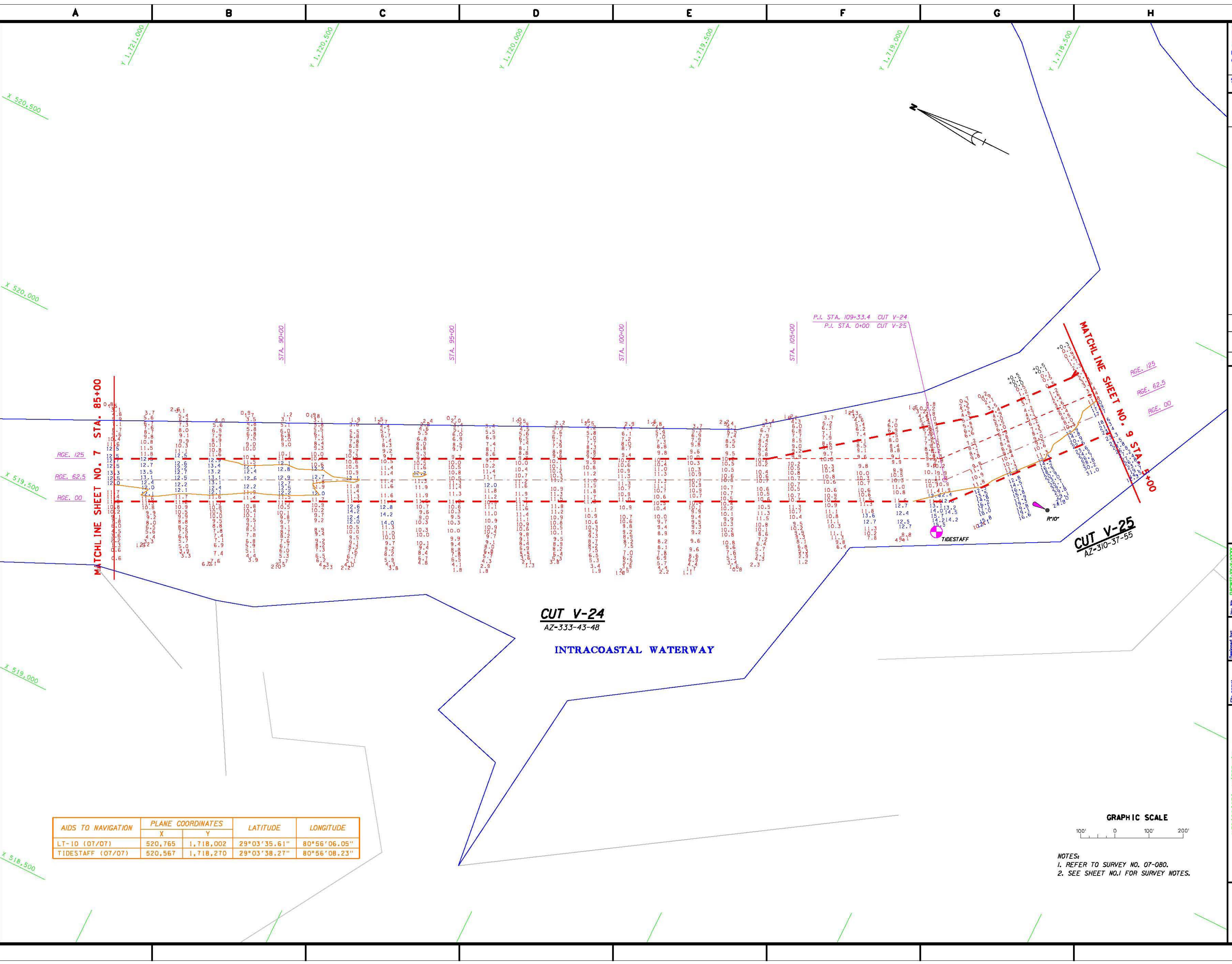
P.I. STA. 109+33.4 CUT V-24  
P.I. STA. 0+00 CUT V-25

STA. 90+00

STA. 95+00

STA. 100+00

STA. 105+00





A B C D E F G H



SAFETY ON THIS JOB DEPENDS ON YOU

Description	No.	Symbol	Zone

DEPARTMENT OF THE ARMY  
CORPS OF ENGINEERS  
JACKSONVILLE, FLORIDA

Drawn by:	DAW
Checked by:	
Date:	
Scale:	AS SHOWN
Plot scale:	AS SHOWN
Plot number:	

File name: 07-080V26.DGN  
Reference files: 07-080V25.DGN, 07-080V28.DGN, 07-080V29.DGN, 07-080V30.DGN

INTRACASTAL WATERWAY  
JACKSONVILLE TO MAINA, FLORIDA  
PROJECT CONDITION SURVEY  
12-FOOT PROJECT  
STA. 9+00 CUT V-25 THRU STA. 28+00 CUT V-26  
PLAN

DRAWING NO.  
9/17

SHEET 9 OF 26

1,719,000  
1,718,500

1,718,500

1,718,000

1,717,500

1,717,000

ROCKHOUSE CREEK

STA. 5+00

STA. 10+00

STA. 15+00

STA. 20+00

STA. 25+00

STA. 28+00

MATCHLINE SHEET NO. 8 STA. 5+00

MATCHLINE SHEET NO. 10 STA. 28+00

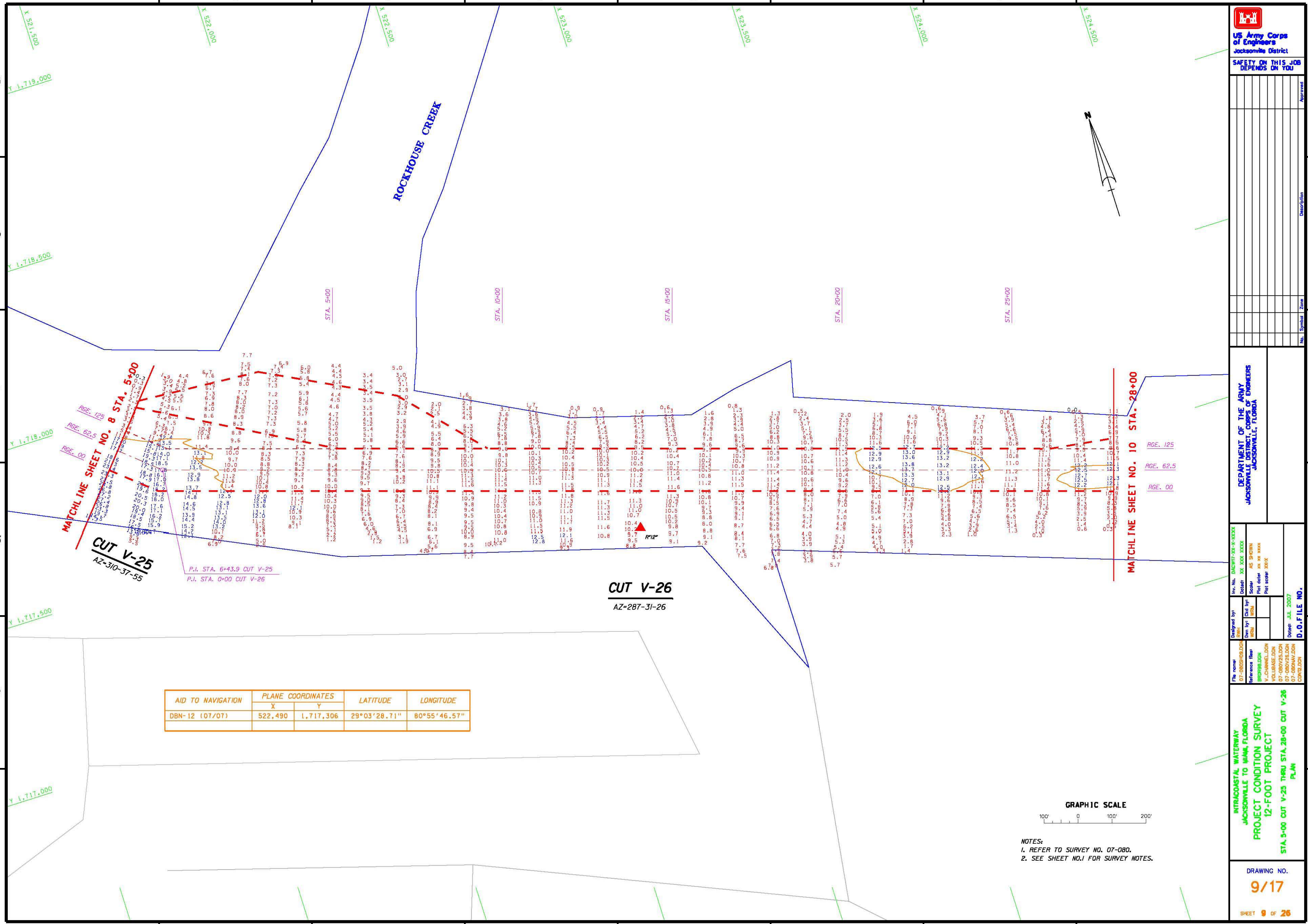
CUT V-25  
AZ-310-37-55

CUT V-26  
AZ-287-31-26

AID TO NAVIGATION	PLANE COORDINATES		LATITUDE	LONGITUDE
	X	Y		
DBN-12 (07/07)	522,490	1,717,306	29°03'28.71"	80°55'46.57"



- NOTES:  
1. REFER TO SURVEY NO. 07-080.  
2. SEE SHEET NO.1 FOR SURVEY NOTES.



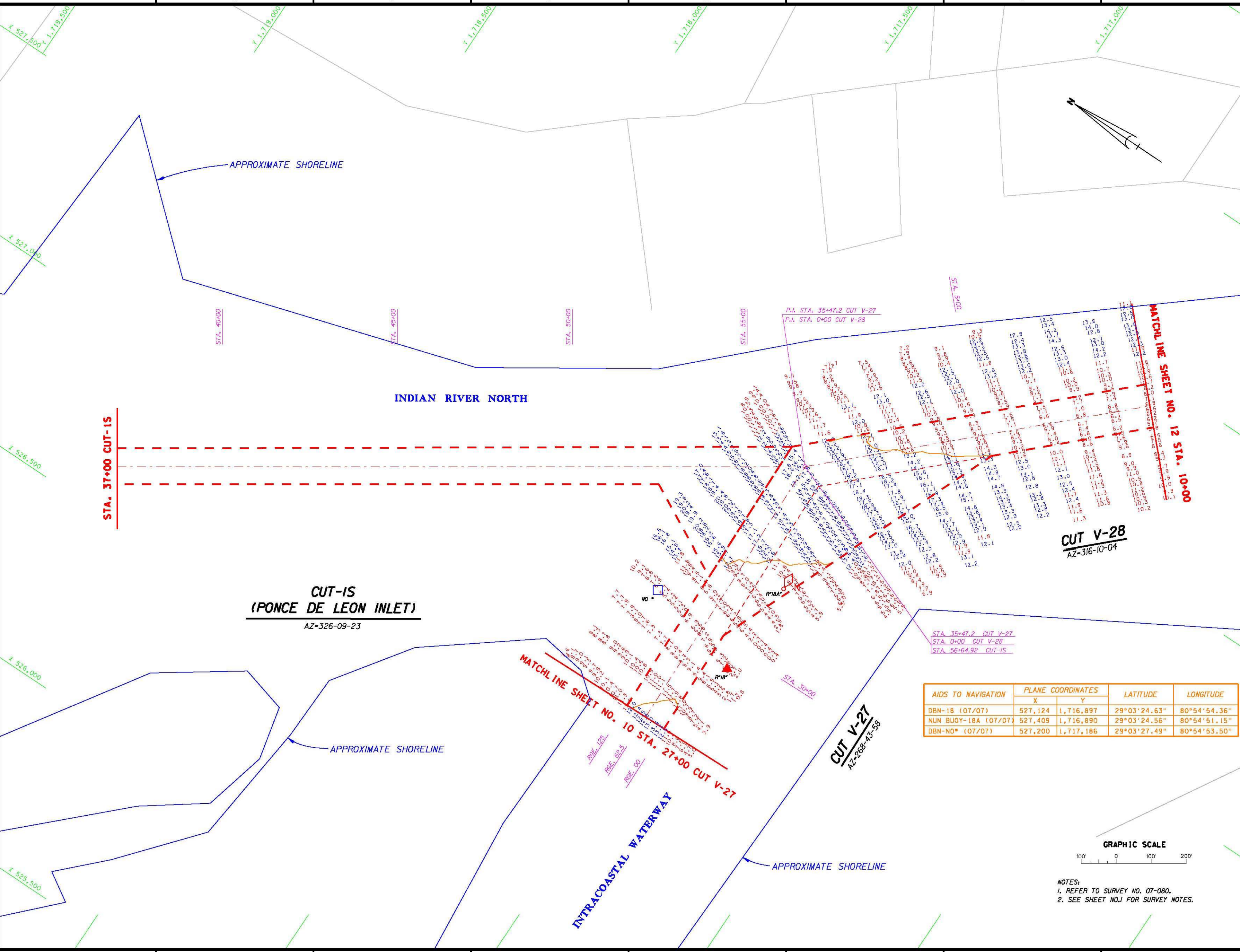






A B C D E F G H

6  
5  
4  
3  
2  
1



US Army Corps of Engineers  
 Jacksonville District  
**SAFETY ON THIS JOB DEPENDS ON YOU**

No.	Symbol	Zone

DEPARTMENT OF THE ARMY  
 CORPS OF ENGINEERS  
 JACKSONVILLE, FLORIDA

Instr. No.	DUCHIT-26-9-000X
Detail	12' X 30" X 30"
Scale	AS SHOWN
Plotted by	AS SHOWN
Plotted date	AS SHOWN
Plotted scale	AS SHOWN
Drawn by	AS SHOWN
Checked by	AS SHOWN
Designated by	AS SHOWN
Drawn by	AS SHOWN
Checked by	AS SHOWN
Reference files	AS SHOWN
Reference books	AS SHOWN
Reference maps	AS SHOWN
Reference photos	AS SHOWN
Reference models	AS SHOWN

INTRACOASTAL WATERWAY  
 JACKSONVILLE TO WALKERS, FLORIDA  
 PROJECT CONDITION SURVEY  
 12-FOOT PROJECT  
 STA. 27+00 CUT V-27 THRU STA. 10+00 CUT V-28  
 PLAN

DRAWING NO.  
**11/17**  
 SHEET 11 of 28

AIDS TO NAVIGATION	PLANE COORDINATES		LATITUDE	LONGITUDE
	X	Y		
DBN-18 (07/07)	527,124	1,716,897	29°03'24.63"	80°54'54.36"
NUN BUOY-18A (07/07)	527,409	1,716,890	29°03'24.56"	80°54'51.15"
DBN-ND* (07/07)	527,200	1,717,186	29°03'27.49"	80°54'53.50"



NOTES:  
 1. REFER TO SURVEY NO. 07-080.  
 2. SEE SHEET NO.1 FOR SURVEY NOTES.





No.	Symbol	Zone	Description

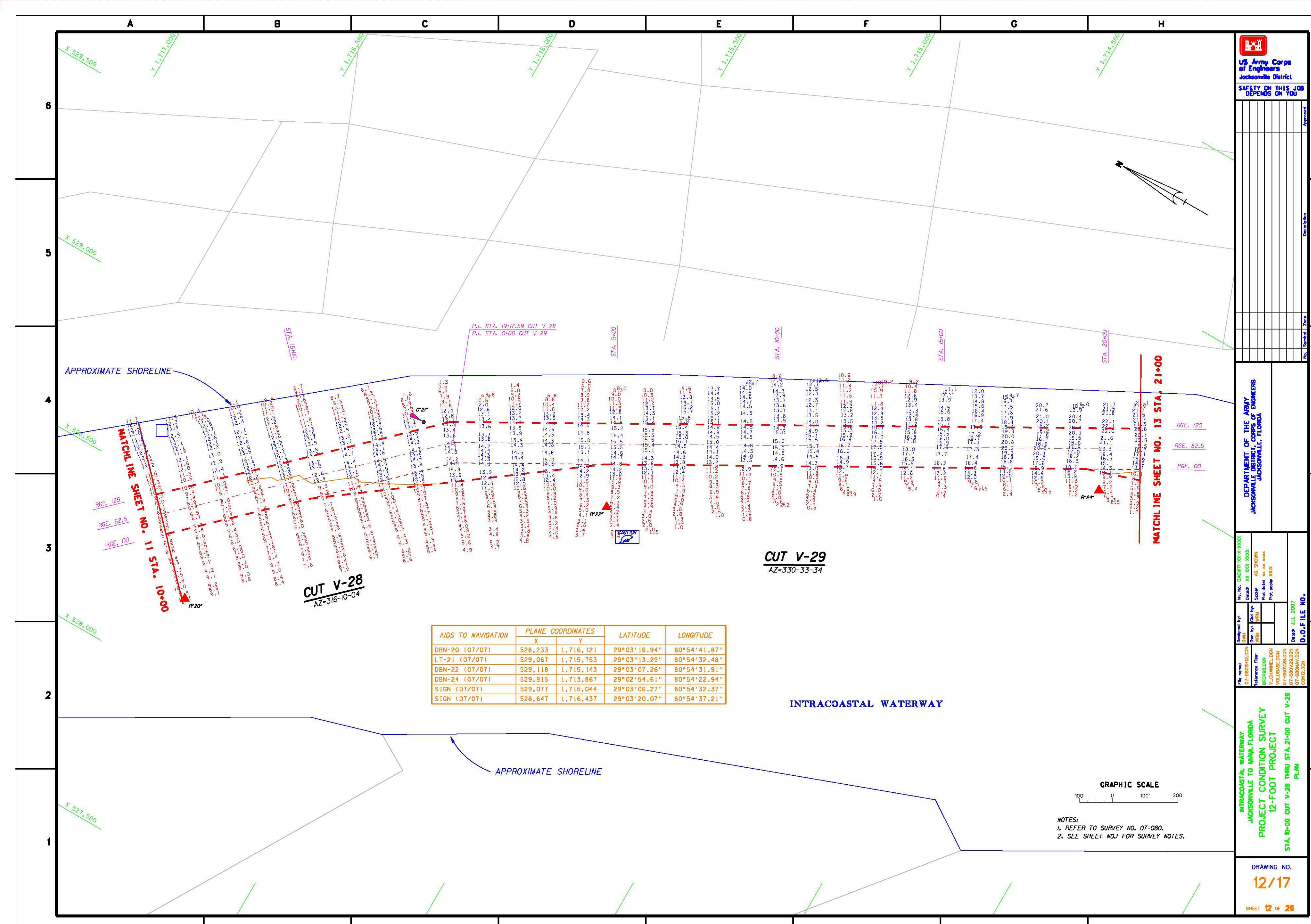
DEPARTMENT OF THE ARMY  
CORPS OF ENGINEERS  
JACKSONVILLE DISTRICT  
JACKSONVILLE, FLORIDA

Inv. No.	DATE: 20-07-2007
Date	DATE: 20-07-2007
Scale	AS SHOWN
Plot scale	AS SHOWN
Plot scale	AS SHOWN
Plot scale	AS SHOWN

INTRACOASTAL WATERWAY  
JACKSONVILLE TO MIAMI, FLORIDA  
PROJECT CONDITION SURVEY  
12-FOOT PROJECT  
STA. 0+00 CUT V-28 THRU STA. 21+00 CUT V-29  
PLAN

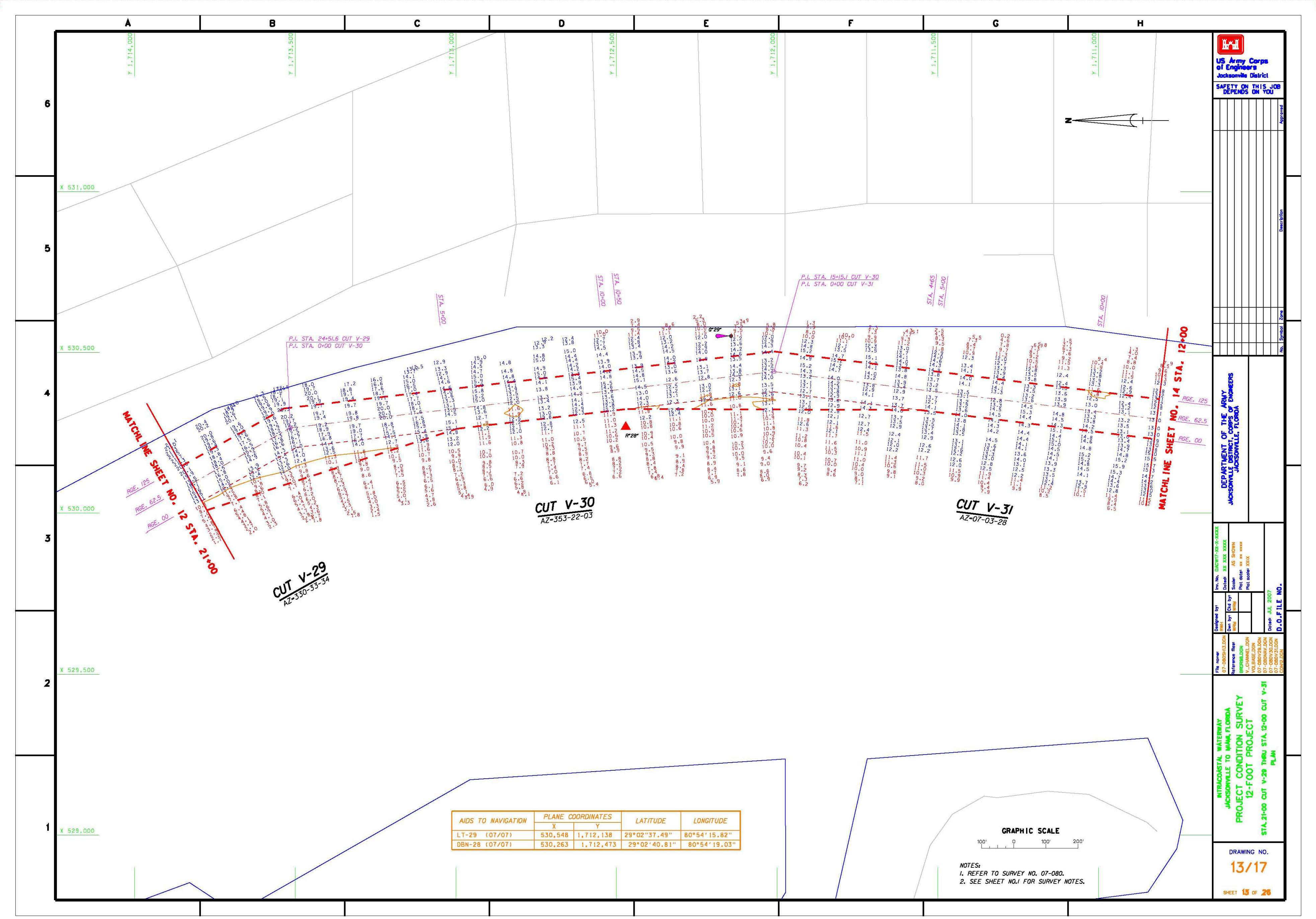
DRAWING NO.  
**12/17**  
SHEET **12** OF **26**

AIDS TO NAVIGATION	PLANE COORDINATES		LATITUDE	LONGITUDE
	X	Y		
DBN-20 (07/07)	528,233	1,716,121	29°03'16.94"	80°54'41.87"
LT-21 (07/07)	529,067	1,715,753	29°03'13.29"	80°54'32.48"
DBN-22 (07/07)	529,118	1,715,143	29°03'07.26"	80°54'31.91"
DBN-24 (07/07)	529,915	1,713,867	29°02'54.61"	80°54'22.94"
SIGN (07/07)	529,077	1,715,044	29°03'06.27"	80°54'32.37"
SIGN (07/07)	528,647	1,716,437	29°03'20.07"	80°54'37.21"



NOTES:  
1. REFER TO SURVEY NO. 07-080.  
2. SEE SHEET NO. 1 FOR SURVEY NOTES.





**US Army Corps of Engineers**  
 Jacksonville District  
**SAFETY ON THIS JOB DEPENDS ON YOU**

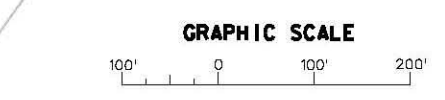
No.	Symbol	Zone

**DEPARTMENT OF THE ARMY**  
**JACKSONVILLE DISTRICT OF ENGINEERS**  
 JACKSONVILLE, FLORIDA

Inv. No.	DATE	BY
Scale	AS SHOWN	
Plot scale	AS SHOWN	
Plot number		

**INTRACASTAL WATERWAY**  
**JACKSONVILLE TO MIAMI FLORIDA**  
**PROJECT CONDITION SURVEY**  
**12-FOOT PROJECT**  
**STA. 21+00 CUT V-29 THRU STA. 12+00 CUT V-31**  
**PLAN**

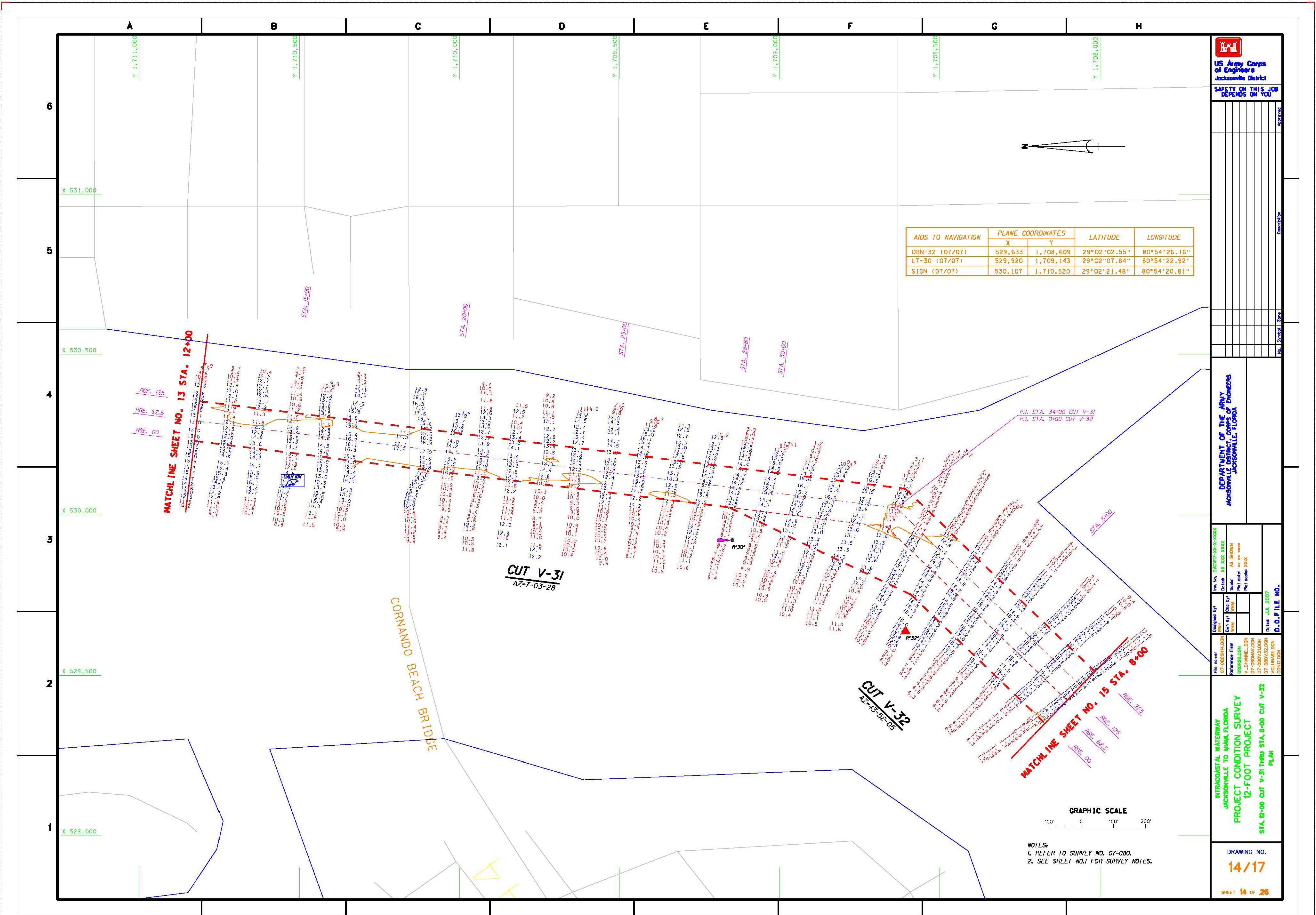
AIDS TO NAVIGATION	PLANE COORDINATES		LATITUDE	LONGITUDE
	X	Y		
LT-29 (07/07)	530,548	1,712,138	29°02'37.49"	80°54'15.82"
DBN-28 (07/07)	530,263	1,712,473	29°02'40.81"	80°54'19.03"



**NOTES:**  
 1. REFER TO SURVEY NO. 07-080.  
 2. SEE SHEET NO.1 FOR SURVEY NOTES.

**DRAWING NO.**  
**13/17**  
**SHEET 13 OF 26**





**US Army Corps of Engineers**  
 Jacksonville District  
 SAFETY ON THIS JOB DEPENDS ON YOU

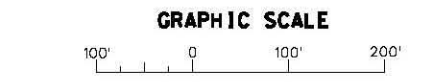
AIDS TO NAVIGATION	PLANE COORDINATES		LATITUDE	LONGITUDE
	X	Y		
DBN-32 (07/07)	529,633	1,708,609	29°02'02.55"	80°54'26.16"
LT-30 (07/07)	529,920	1,709,143	29°02'07.84"	80°54'22.92"
SIGN (07/07)	530,107	1,710,520	29°02'21.48"	80°54'20.81"

DEPARTMENT OF THE ARMY  
 CORPS OF ENGINEERS  
 JACKSONVILLE, FLORIDA

Drawn by: [Name]	Checked: [Name]
Designated by: [Name]	Scale: [Scale]
Drawn by: [Name]	Plot scale: [Scale]
Reference: [Name]	Plot scale: [Scale]
Reference: [Name]	Plot scale: [Scale]
Reference: [Name]	Plot scale: [Scale]
Reference: [Name]	Plot scale: [Scale]
Reference: [Name]	Plot scale: [Scale]
Reference: [Name]	Plot scale: [Scale]

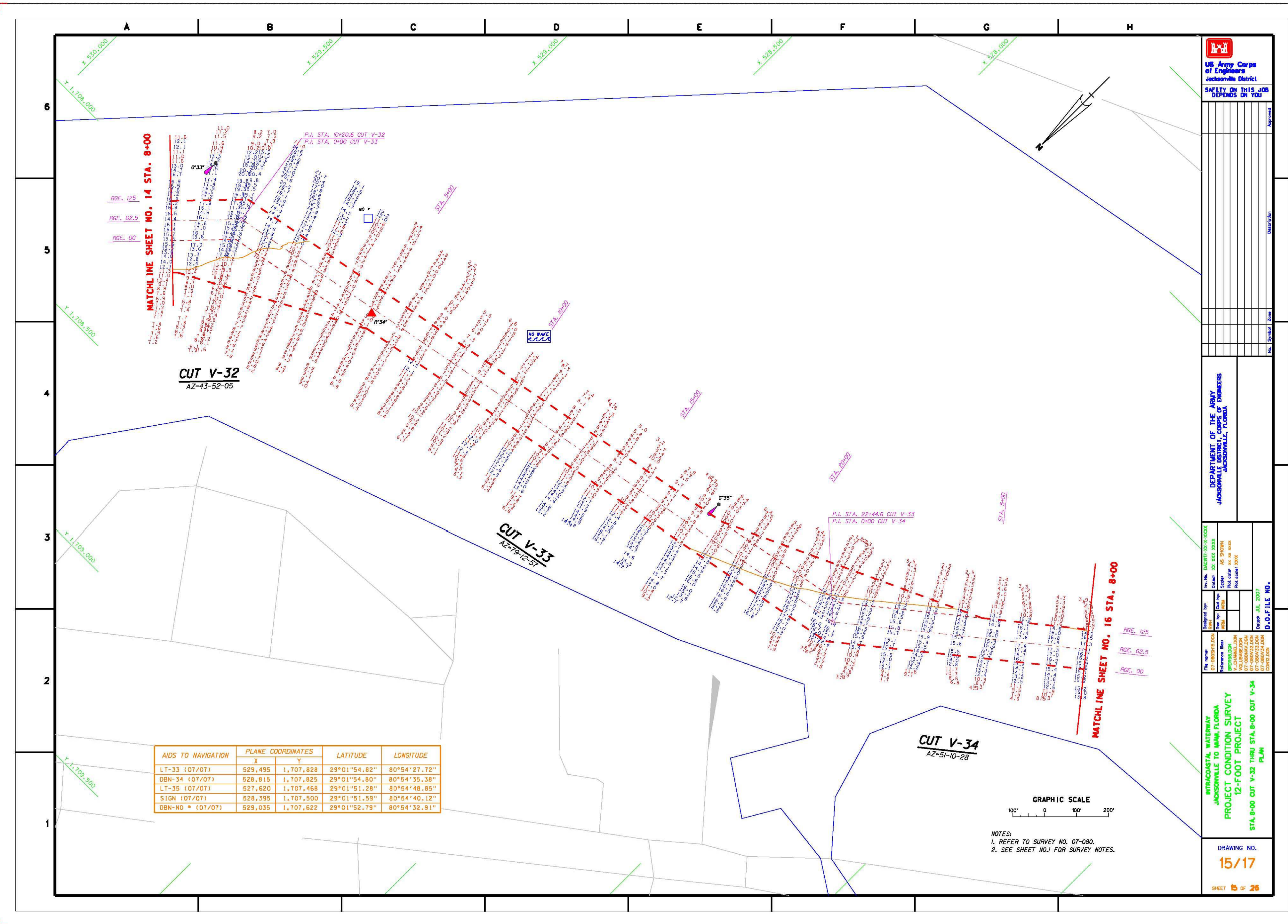
INTRACASTAL WATERWAY  
 JACKSONVILLE TO MIAMI, FLORIDA  
 PROJECT CONDITION SURVEY  
 12-FOOT PROJECT  
 STA. 12+00 CUT V-31 THRU STA. 8+00 CUT V-32  
 PLAN

DRAWING NO.  
**14/17**  
 SHEET 14 of 26

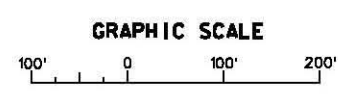


NOTES:  
 1. REFER TO SURVEY NO. 07-080.  
 2. SEE SHEET NO.1 FOR SURVEY NOTES.





AIDS TO NAVIGATION	PLANE COORDINATES		LATITUDE	LONGITUDE
	X	Y		
LT-33 (07/07)	529,495	1,707,828	29°01'54.82"	80°54'27.72"
DBN-34 (07/07)	528,815	1,707,825	29°01'54.80"	80°54'35.38"
LT-35 (07/07)	527,620	1,707,468	29°01'51.28"	80°54'48.85"
SIGN (07/07)	528,395	1,707,500	29°01'51.59"	80°54'40.12"
DBN-ND * (07/07)	529,035	1,707,622	29°01'52.79"	80°54'32.91"



NOTES:  
 1. REFER TO SURVEY NO. 07-080.  
 2. SEE SHEET NO. J FOR SURVEY NOTES.



No.	Symbol	Zone	Description

DESIGNED BY: [NAME]  
 DRAWN BY: [NAME]  
 CHECKED BY: [NAME]  
 APPROVED BY: [NAME]

DEPARTMENT OF THE ARMY  
 CORPS OF ENGINEERS  
 JACKSONVILLE, FLORIDA

File Name: 07-080(01)001.DWG  
 Reference File: 07-080(01)001.DWG  
 Reference File: 07-080(01)001.DWG  
 Reference File: 07-080(01)001.DWG  
 Reference File: 07-080(01)001.DWG

Inventor: D:\CADD\07-080(01)001.DWG  
 Date: 07-07-07  
 Scale: AS SHOWN  
 Plot Date: 07-07-07  
 Plot Scale: AS SHOWN

D.O.F. FILE NO. 07-080(01)001.DWG

INTRACASTAL WATERWAY  
 JACKSONVILLE TO WANA, FLORIDA  
 PROJECT CONDITION SURVEY  
 12-FOOT PROJECT

STA. 8+00 CUT V-32 THRU STA. 8+00 CUT V-34  
 PLAN

DRAWING NO.  
**15/17**

SHEET 15 OF 26



No.	Description	Zone

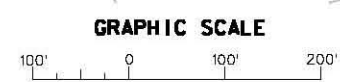
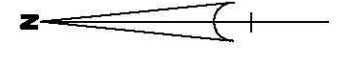
**DEPARTMENT OF THE ARMY**  
**CORPS OF ENGINEERS**  
JACKSONVILLE, FLORIDA

Drawn by: <b>DMC/PT-22-R-XXXX</b>	Scale: <b>AS SHOWN</b>
Checked by: <b>AS XXXXX</b>	Plot scale: <b>AS SHOWN</b>

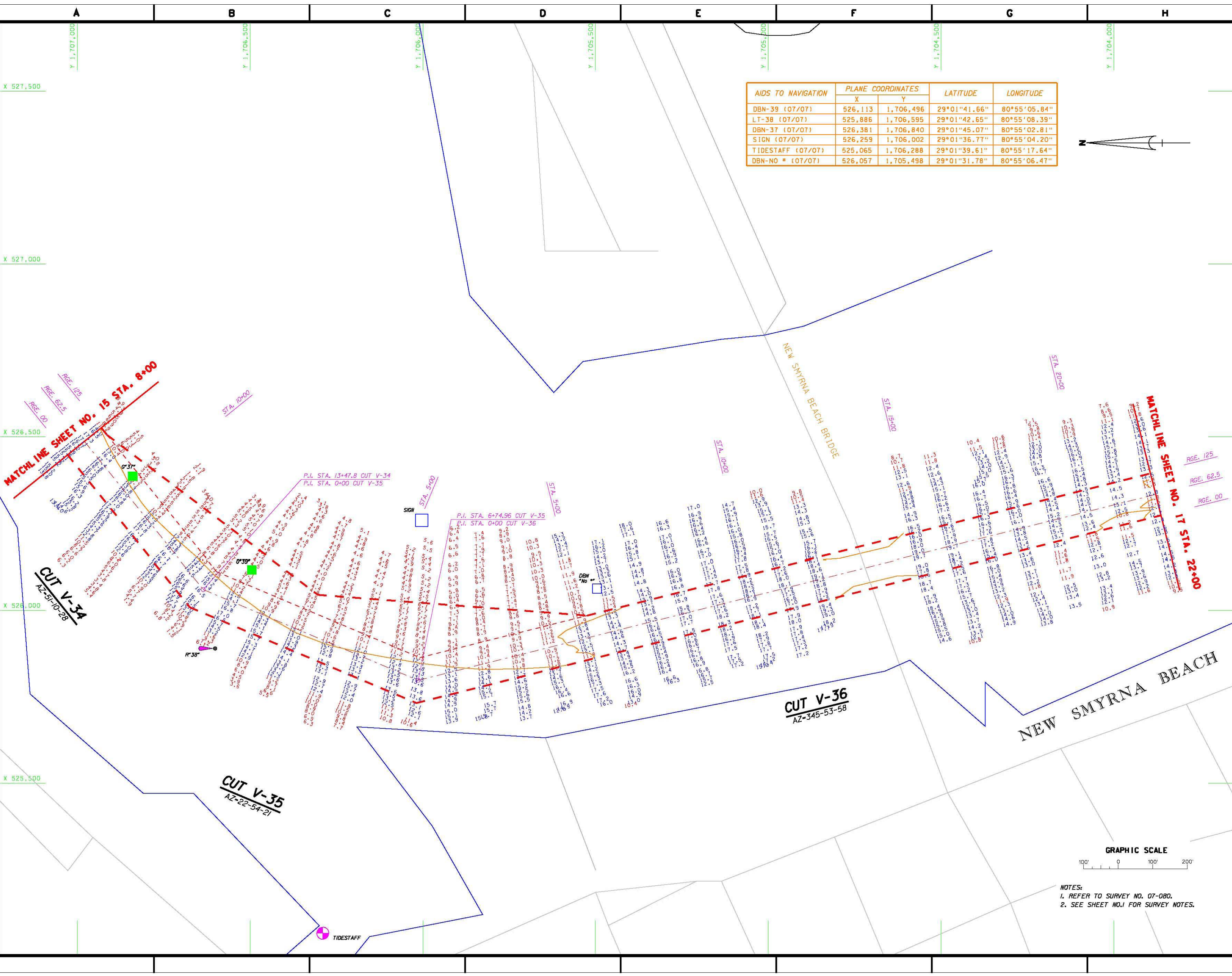
**INTRACOSTAL WATERWAY**  
**JACKSONVILLE TO MIAMI FLORIDA**  
**PROJECT CONDITION SURVEY**  
**12-FOOT PROJECT**  
**STA. 0+00 CUT V-34 THRU STA. 22+00 CUT V-36**  
**PLAN**

DRAWING NO.  
**16/17**  
SHEET 16 OF 26

AIDS TO NAVIGATION	PLANE COORDINATES		LATITUDE	LONGITUDE
	X	Y		
DBN-39 (07/07)	526,113	1,706,496	29°01'41.66"	80°55'05.84"
LT-38 (07/07)	525,886	1,706,595	29°01'42.65"	80°55'08.39"
DBN-37 (07/07)	526,381	1,706,840	29°01'45.07"	80°55'02.81"
SIGN (07/07)	526,259	1,706,002	29°01'36.77"	80°55'04.20"
TIDESTAFF (07/07)	525,065	1,706,288	29°01'39.61"	80°55'17.64"
DBN-NO # (07/07)	526,057	1,705,498	29°01'31.78"	80°55'06.47"

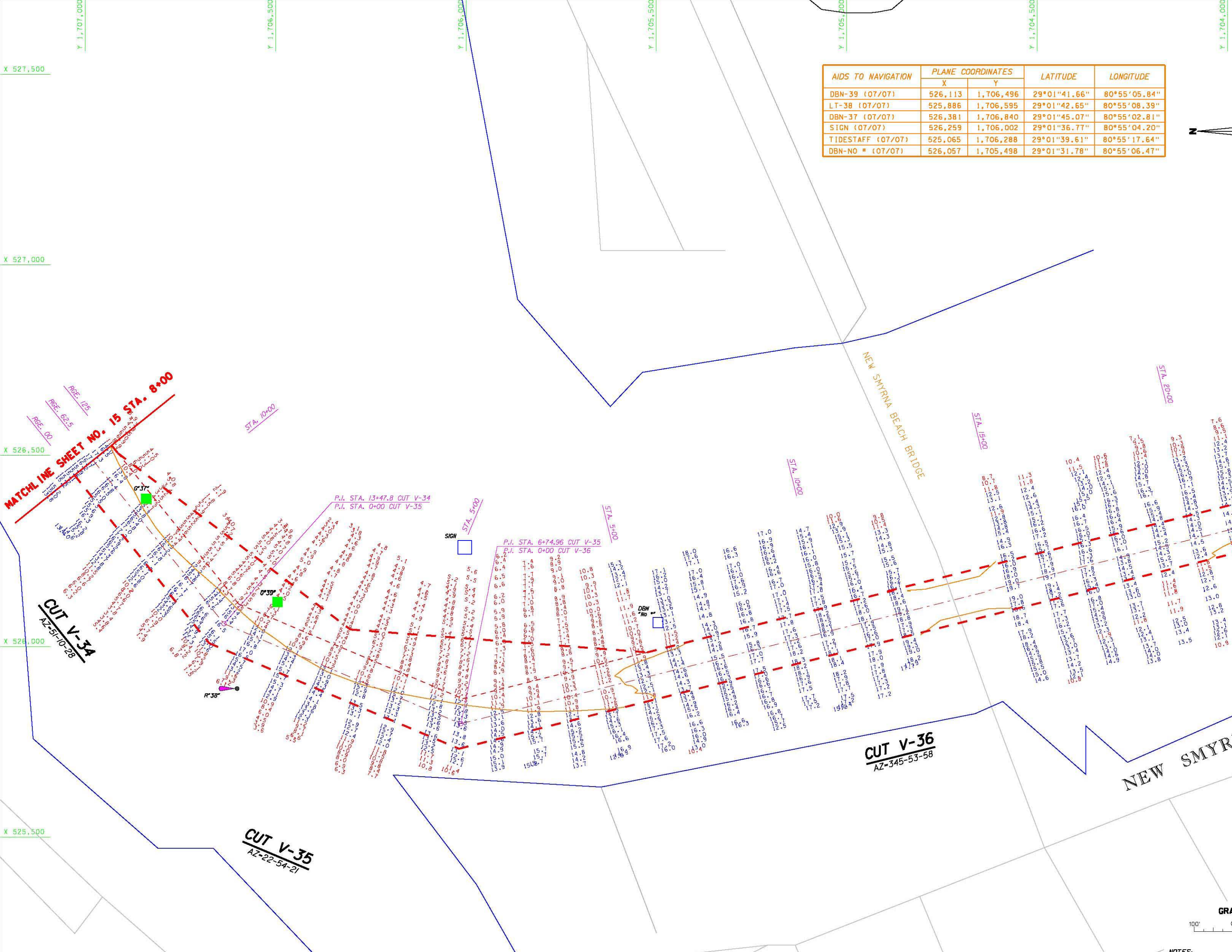


NOTES:  
1. REFER TO SURVEY NO. 07-080.  
2. SEE SHEET NO.1 FOR SURVEY NOTES.



6  
5  
4  
3  
2  
1

A B C D E F G H





AIDS TO NAVIGATION	PLANE COORDINATES		LATITUDE	LONGITUDE
	X	Y		
DBN-43 (07/07)	526,636	1,703,236	29°01'09.38"	80°54'59.97"
LT-42 (07/07)	526,244	1,703,433	29°01'11.33"	80°55'04.39"
SIGN (07/07)	526,766	1,703,301	29°01'10.03"	80°54'58.51"

  
**US Army Corps of Engineers**  
 Jacksonville District  
**SAFETY ON THIS JOB DEPENDS ON YOU**

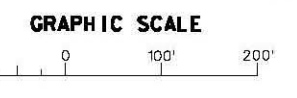
Appr.	Author	Scale	Date

DEPARTMENT OF THE ARMY  
 JACKSONVILLE DISTRICT ENGINEERS  
 JACKSONVILLE, FLORIDA

Inv. No. 000017-35-9-0000	Date 02/02/03	Scale AS SHOWN	Plot order as in notes	Plot scale 1:5000	Sheet 17 of 26
Designed by: JTB	Drawn by: JTB	Checked by: JTB			
File name: 07-000017.DGN	Reference file: 07-000017.DGN				

INTRACOSTAL WATERWAY  
 JACKSONVILLE TO WAVA, FLORIDA  
 PROJECT CONDITION SURVEY  
 12-FOOT PROJECT  
 STA. 22+00 CUT V-36 THRU STA. 3+00 CUT V-38  
 PLAN

DRAWING NO.  
**17/17**  
 SHEET 17 of 26



NOTES:  
 1. REFER TO SURVEY NO. 07-080.  
 2. SEE SHEET NO.1 FOR SURVEY NOTES.

