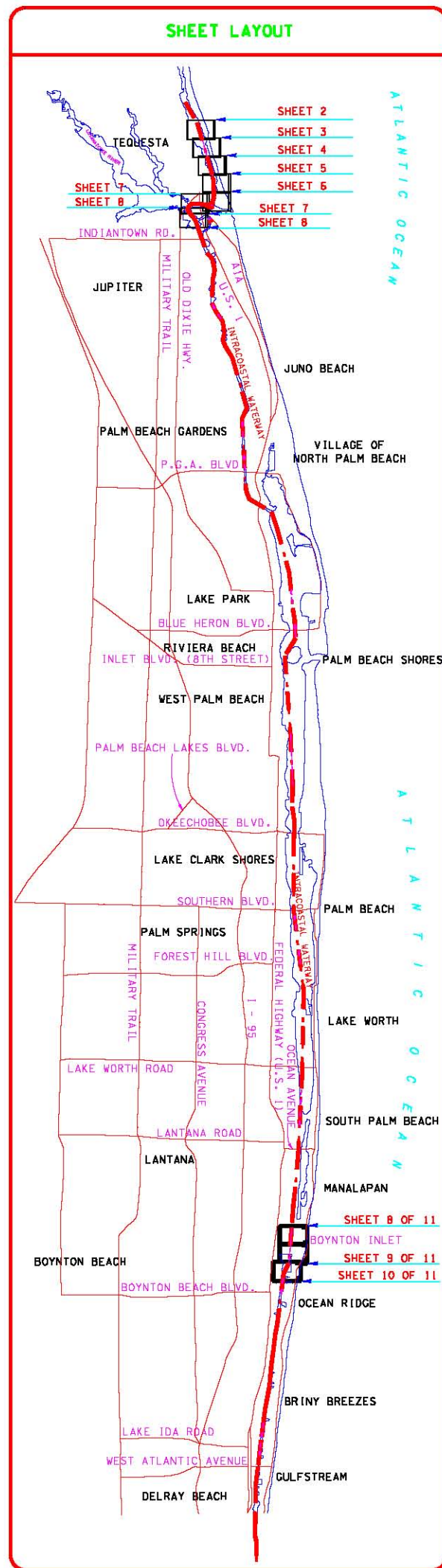
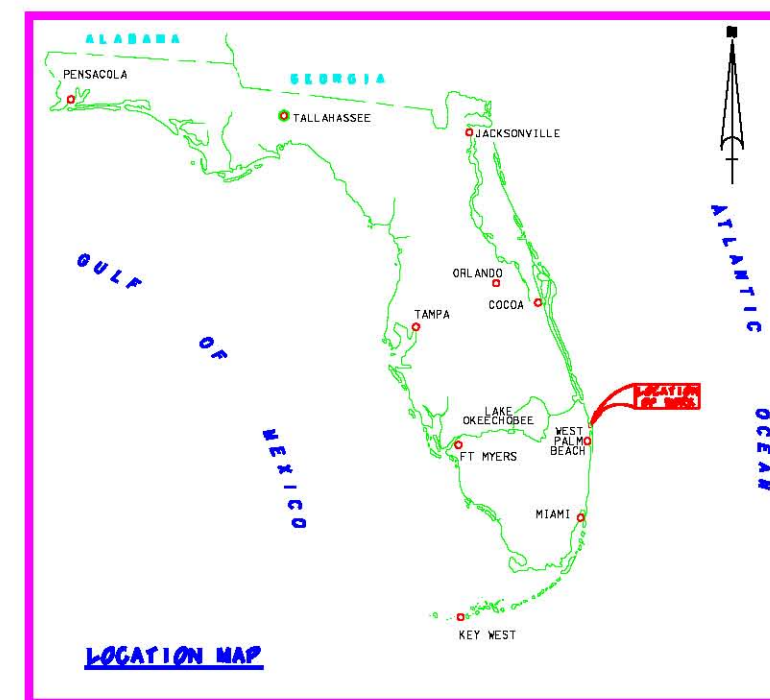
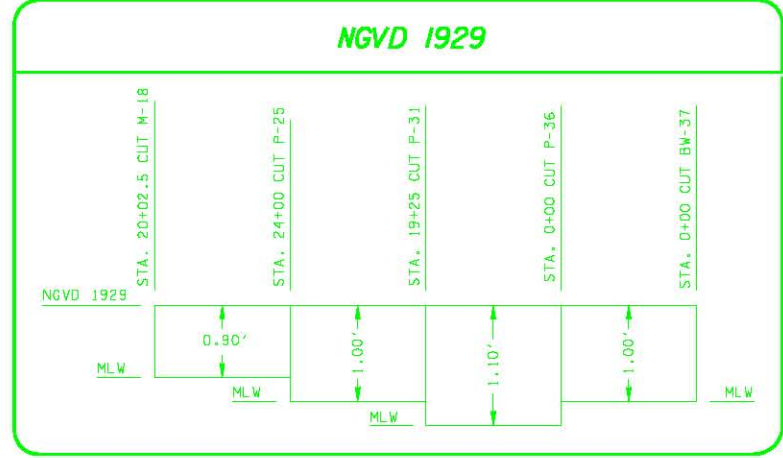


INTRACOASTAL WATERWAY VICINITY OF JUPITER INLET PALM BEACH COUNTY, FLORIDA PROJECT CONDITION SURVEY 10-FOOT PROJECT



BENCHMARK	NGVD ELEV. (FT)
U-308	18.47



Relationship between NGVD 1929
and Mean Low Water

CUT NAME STA. 0+00	PLANE COORDINATES (FEET)		CENTERLINE RANGE (FEET)	AZIMUTH
	X (FEET)	Y (FEET)		
M-25	796,022.49	965,265.95	62.5	329°53'23"
P-1	797,696.25	962,379.74	62.5	343°42'50"
P-2	799,973.58	954,584.83	62.5	358°51'00"
P-3	800,026.01	951,972.75	62.5	014°24'33"
P-4	799,739.36	950,857.08	62.5	095°16'49"
P-5	797,266.36	951,085.63	62.5	081°45'01"
P-49	811,148.05	811,099.11	62.5	004°04'45"
P-50	810,915.79	807,842.39	62.5	004°57'27"
P-51	810,481.54	802,836.19	62.5	028°51'02"
P-52	809,771.14	801,546.68	62.5	007°07'54"

LEGEND	
⊕ BM	BENCHMARK
⚓	LIGHTED BEACON
■	GREEN DAYBEACON
▲	RED DAYBEACON
●	RED LIGHTED BUOY
●	GREEN LIGHTED BUOY
○	CAN BUOY
○	NUM BUOY
⊕	TIDE STAFF

SURVEY NOTES:

1. REFER TO SURVEY NO. 07-079.
2. SOUNDINGS ARE IN FEET AND TENTHS AND REFER TO MEAN LOW WATER (MLW) WHICH IS 0.90 FEET BELOW NGVD 1929.
3. ALL ELEVATIONS ARE BELOW THE CHART DATUM UNLESS PRECEDED BY A (+) SIGN.
4. TIDAL REDUCTIONS WERE MADE FROM A STAFF SET ON A DOCK PILING IN THE VICINITY OF AND REFERENCED FROM BENCHMARK "U-308".
5. PLANE COORDINATES ARE BASED ON THE TRANSVERSE MERCATOR PROJECTION FOR THE EAST ZONE OF FLORIDA AND REFERENCED TO NORTH AMERICAN DATUM OF 1927 (NAD27).
6. ALL AZIMUTHS ARE GRID; RECKONED CLOCKWISE FROM SOUTH.
7. ALL STATIONING REFERS TO THE CENTERLINE OF THE CHANNEL.
8. SURVEY WAS PERFORMED USING DIFFERENTIAL GPS FOR POSITIONING AND UTILIZING THE USCG NAVBEACON SYSTEM AS THE REFERENCE SITE. VERTICAL MEASUREMENTS WERE MADE USING A ROSS SMART SOUNDER DEPTH RECORDER WITH A 200KHZ (HIGH FREQUENCY) TRANSDUCER.
9. AIDS TO NAVIGATION WERE NOT LOCATED DURING THIS SURVEY.
10. THE INFORMATION DEPICTED ON THIS MAP REPRESENTS THE RESULTS OF SURVEYS MADE ON THE DATES INDICATED ABOVE AND CAN ONLY BE CONSIDERED AS INDICATING THE GENERAL CONDITIONS AT THAT TIME. THIS CHART IS SOLELY FOR THE DISTRIBUTION OF AVAILABLE DEPTHS AT THE TIME OF THE SURVEY AND IS NOT TO BE USED FOR NAVIGATION.
11. SURVEY ACCURACY PERFORMANCE STANDARDS, QUALITY CONTROL, AND QUALITY ASSURANCE REQUIREMENTS WERE FOLLOWED DURING THIS SURVEY IN ACCORDANCE WITH USACE EM 1110-2-1003, HYDROGRAPHIC SURVEYING, 1 JAN 02.

VESSEL	DATE OF SURVEY	CUT
WB-34	30 MAY 2007	P-1 THRU P-9



US Army Corps of Engineers
Jacksonville District
SAFETY ON THIS JOB
DEPENDS ON YOU

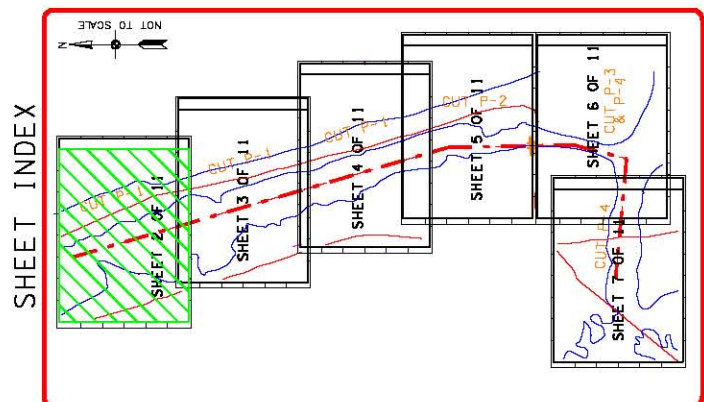
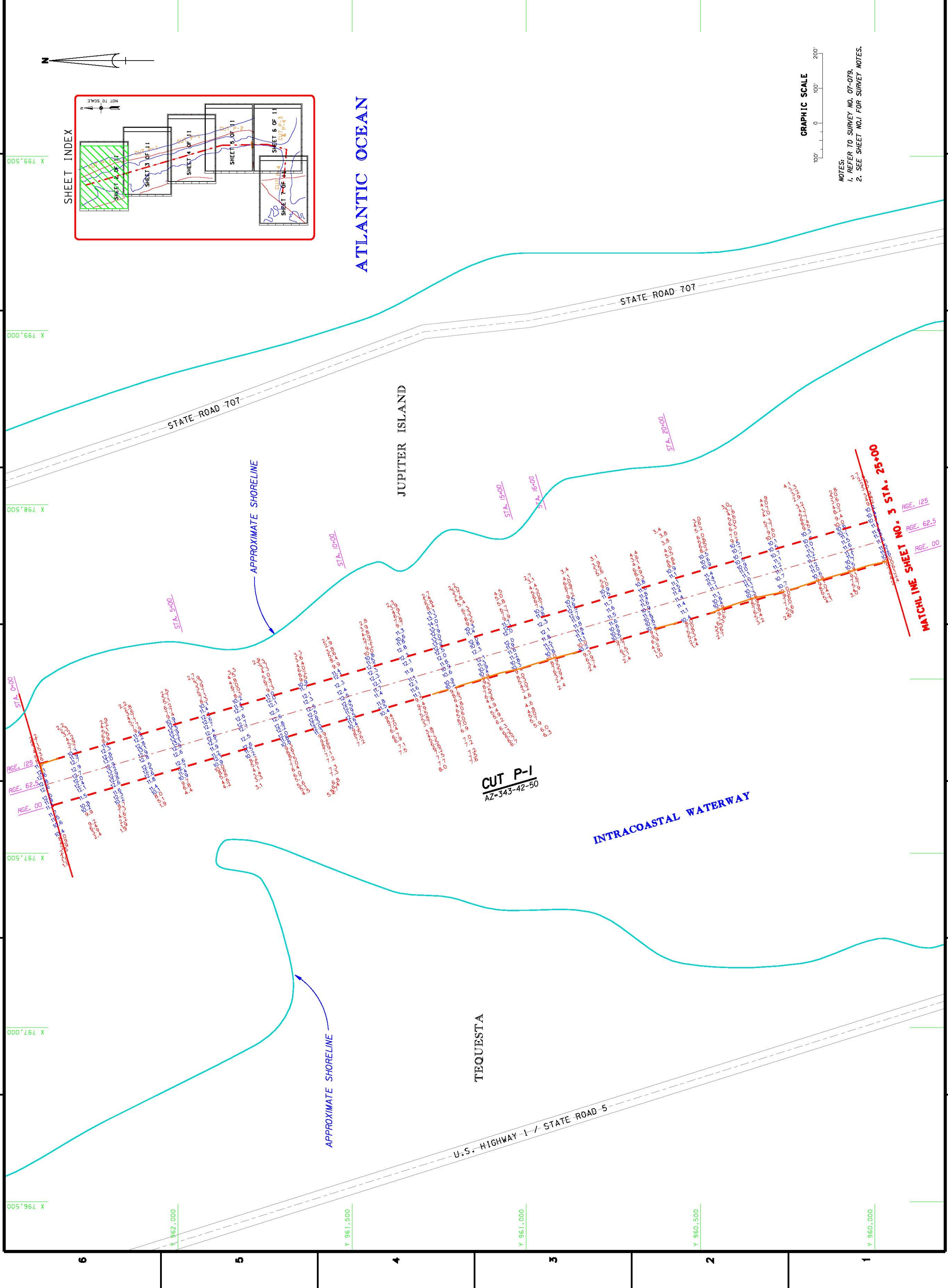
DEPARTMENT OF THE ARMY
CORPS OF ENGINEERS
JACKSONVILLE, FLORIDA

Drawn by: [Name]
Checked by: [Name]
Date: [Date]

INTRACOASTAL WATERWAY
VICINITY OF JUPITER INLET
PROJECT CONDITION SURVEY
10-FOOT PROJECT
COVER AND INDEX SHEET
PLAN

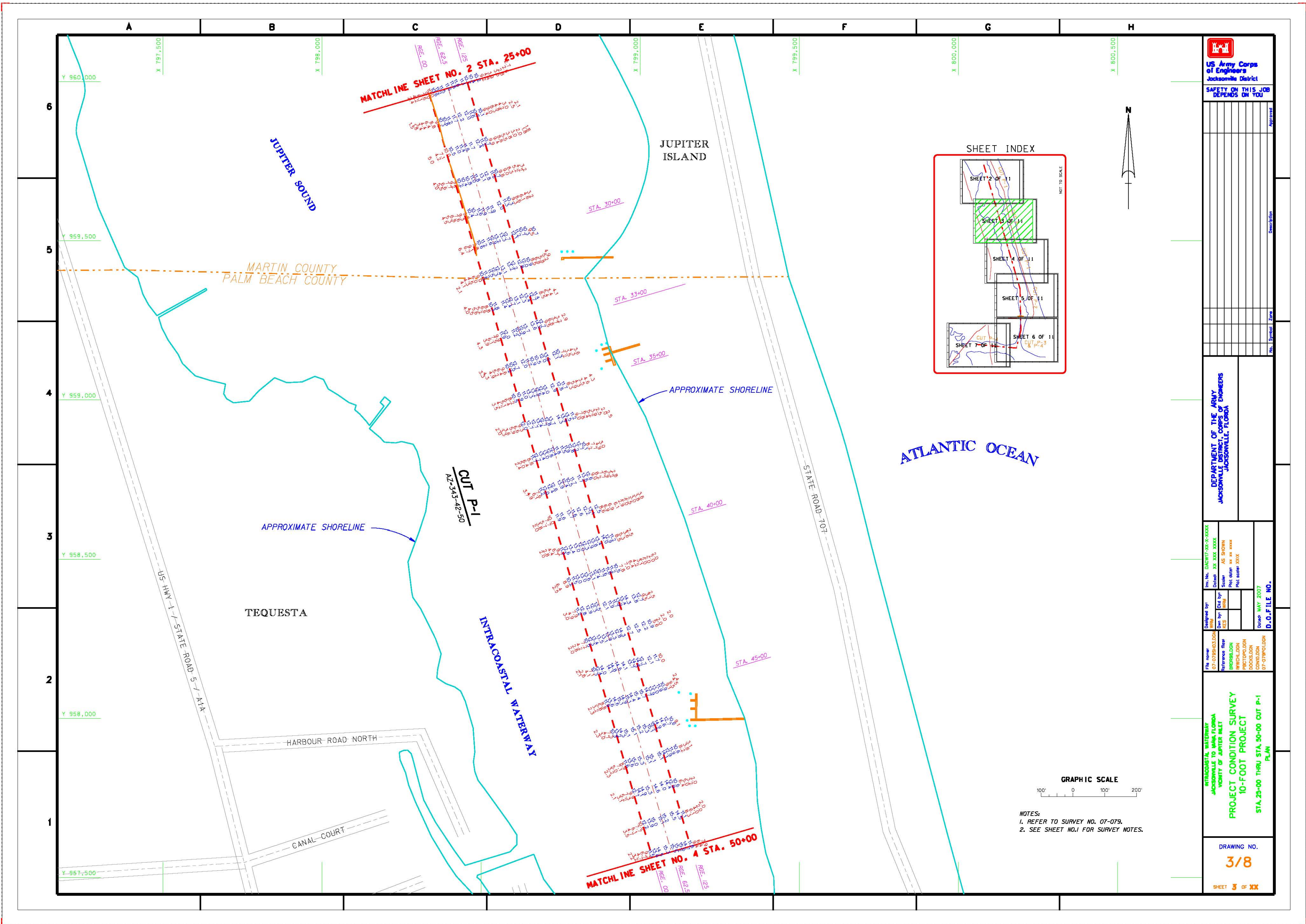
DRAWING NO.
1/8
SHEET 1 of XX

US Army Corps of Engineers Jacksonville District SAFETY ON THIS JOB DEPENDS ON YOU	DEPARTMENT OF THE ARMY JACKSONVILLE DISTRICT, CORPS OF ENGINEERS JACKSONVILLE, FLORIDA	D.O.P. FILE NO. Date: MAY 2007 Scale: AS SHOWN Date: XX XXX XXXX Design: XX XXX X-XXXX	STA. 0+00 THRU STA. 25+00 CUT P-1 PROJECT CONDITION SURVEY 10-FOOT PROJECT JACKSONVILLE TO MIAMI FLORIDA INTRACOASTAL WATERWAY	DRAWING NO. 8 SHEET 2 OF 88



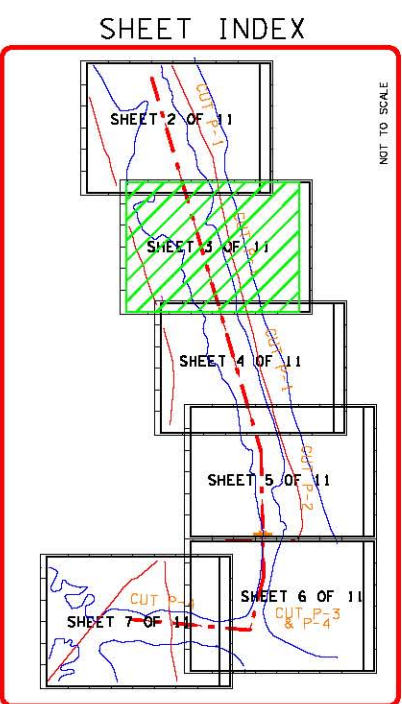
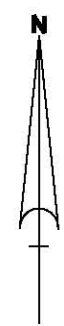
NOTES:
 1. REFER TO SURVEY NO. 07-078.
 2. SEE SHEET NO.1 FOR SURVEY NOTES.

SHEET NO. 3 STA. 25+00
 RGE. 125
 RGE. 62.5
 RGE. 00



US Army Corps of Engineers
Jacksonville District

SAFETY ON THIS JOB
DEPENDS ON YOU



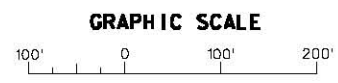
Approved	
Checked	
Designation	
No.	Symbol
Zone	

DEPARTMENT OF THE ARMY
CORPS OF ENGINEERS
JACKSONVILLE, FLORIDA

Inv. No.	DAWIT-2007-0-0000
Date	00 000 0000
Scale	AS SHOWN
Proj. No.	00 000 0000
Proj. Code	0000
Order	MAY 2007
D.O.F. FILE NO.	

Designed by	07-07981000N
Drawn by	07-07981000N
Checked by	07-07981000N
Reference File	07-07981000N
Approval	07-07981000N
Condition	07-07981000N

INTRACOASTAL WATERWAY
JACKSONVILLE TO MIAMI FLORIDA
VICINITY OF JUPITER ISLET
PROJECT CONDITION SURVEY
10-FOOT PROJECT
STA 25+00 THRU STA 50+00 CUT P-1
PLAN

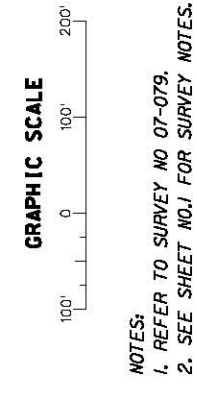
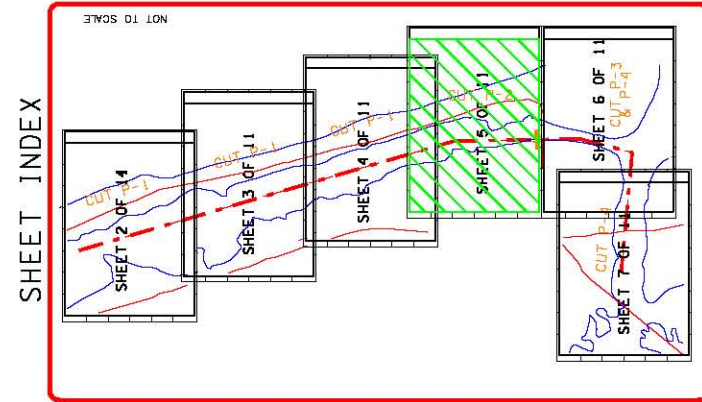


NOTES:
1. REFER TO SURVEY NO. 07-079.
2. SEE SHEET NO.1 FOR SURVEY NOTES.

DRAWING NO.
3/8

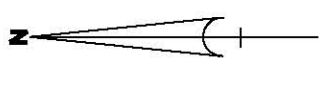
SHEET 3 OF 11

US Army Corps of Engineers Jacksonville District SAFETY ON THIS JOB DEPENDS ON YOU	DEPARTMENT OF THE ARMY JACKSONVILLE DISTRICT, CORPS OF ENGINEERS JACKSONVILLE, FLORIDA	D.O. FILE NO. Date: MAY 2007 Drawn by: [Name] Checked by: [Name] Scale: AS SHOWN Plot Scale: XX XXX XXXX	PROJECT CONDITION SURVEY 10-FOOT PROJECT JACKSONVILLE TO WALK FLORIDA COUNTY OF JUPITER BEACH INTRACOASTAL WATERWAY STA. 75+00 CUT P-1 THRU STA. 17+00 CUT P-2 PLAN	DRAWING NO. 5/8 SHEET 5 OF 11
		No. Symbol Description [Table with 3 columns: No., Symbol, Description]		



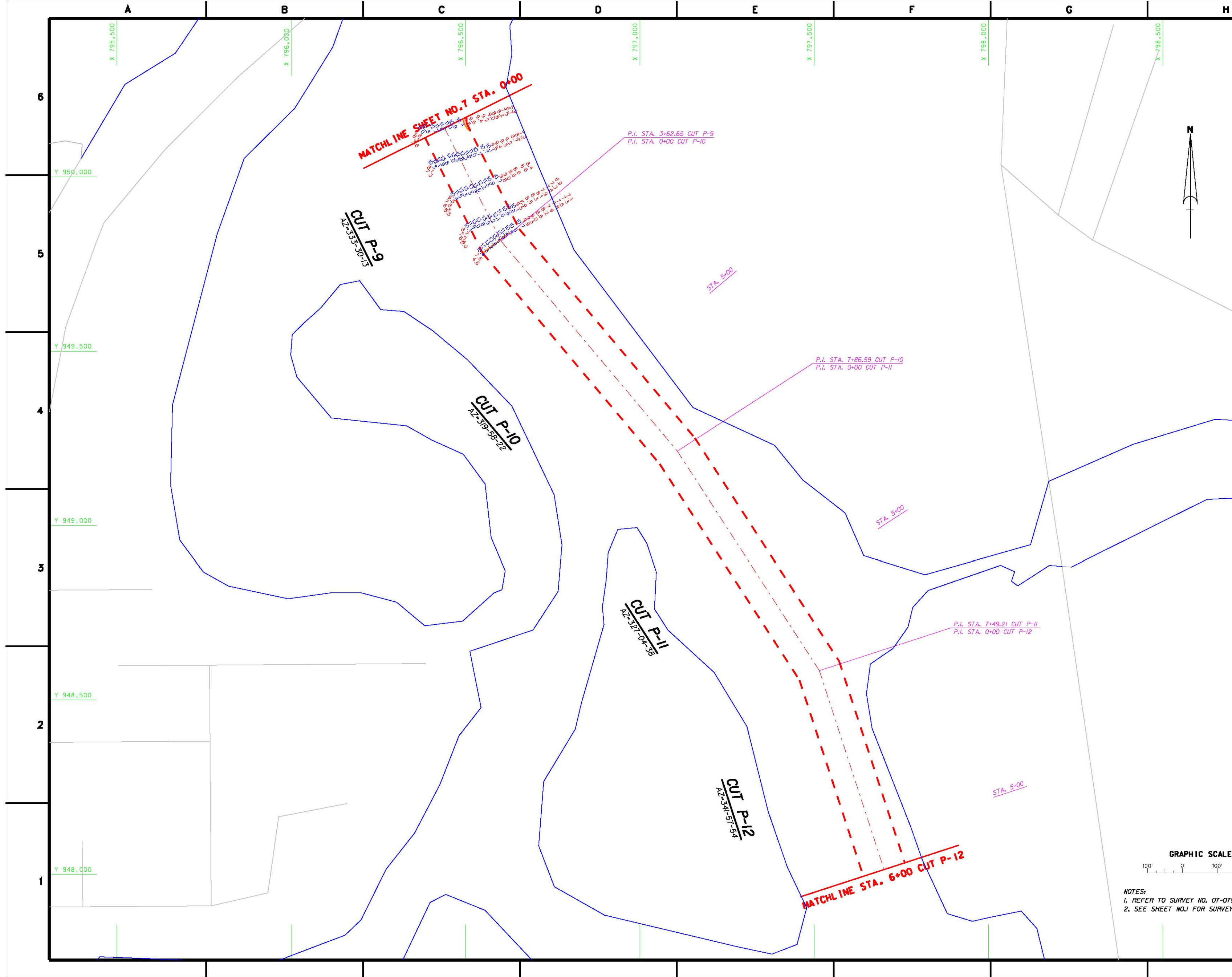
NOTES:
 1. REFER TO SURVEY NO. 07-079.
 2. SEE SHEET NO. J FOR SURVEY NOTES.

Vertical grid lines: X 802,000, X 801,500, X 801,000, X 800,500, X 800,000, X 799,500, X 799,000, X 954,500, X 954,000, X 953,500, X 953,000



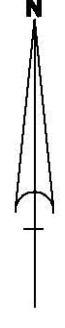
Horizontal grid lines: A, B, C, D, E, F, G, H

Vertical sheet numbers: 6, 5, 4, 3, 2, 1



US Army Corps of Engineers
Jacksonville District

SAFETY ON THIS JOB
DEPENDS ON YOU



Approved	
Checked	
Designation	
No.	
Symbol	
Zone	

DEPARTMENT OF THE ARMY
CORPS OF ENGINEERS
JACKSONVILLE, FLORIDA

Drawn by	DESIGNER:XXX-XXXXX
Checked by	XXX-XXXXX
Scale	AS SHOWN
Plot date	XXX-XXX-XXXX
Plot scale	XXX-XXX-XXXX
Drawn	MAY 2007
D.O.F. FILE NO.	XXX-XX,XXX

INTRACOSTAL WATERWAY
JACKSONVILLE TO MIAMI FLORIDA
VICINITY OF JUPITER INLET
PROJECT CONDITION SURVEY
10-FOOT PROJECT
STA. 0+00 THRU STA. 2+83.54 CUT P-9
PLAN

DRAWING NO.
8/8

SHEET 8 OF XXX



NOTES:
1. REFER TO SURVEY NO. 07-079.
2. SEE SHEET NO.1 FOR SURVEY NOTES.