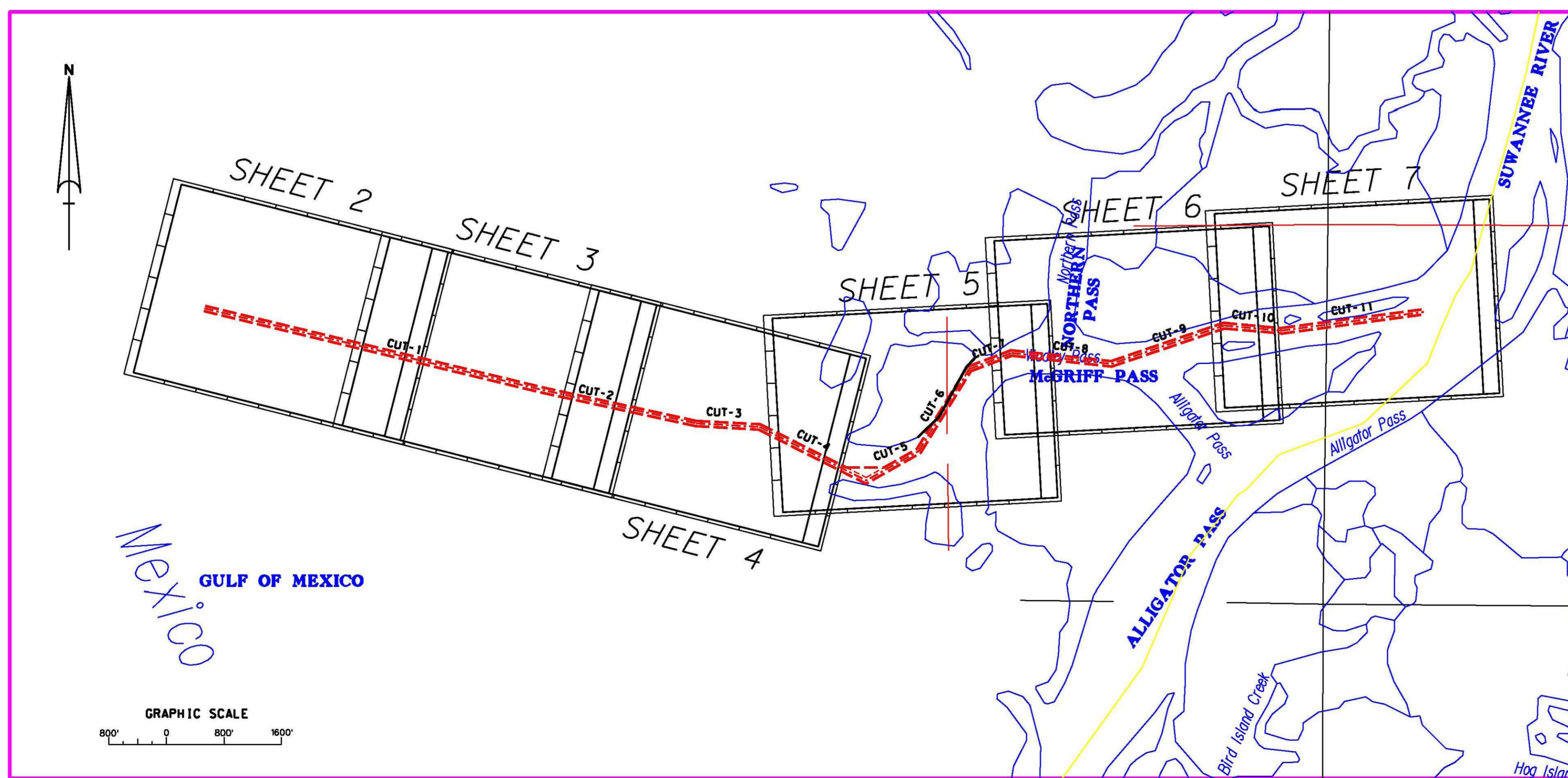
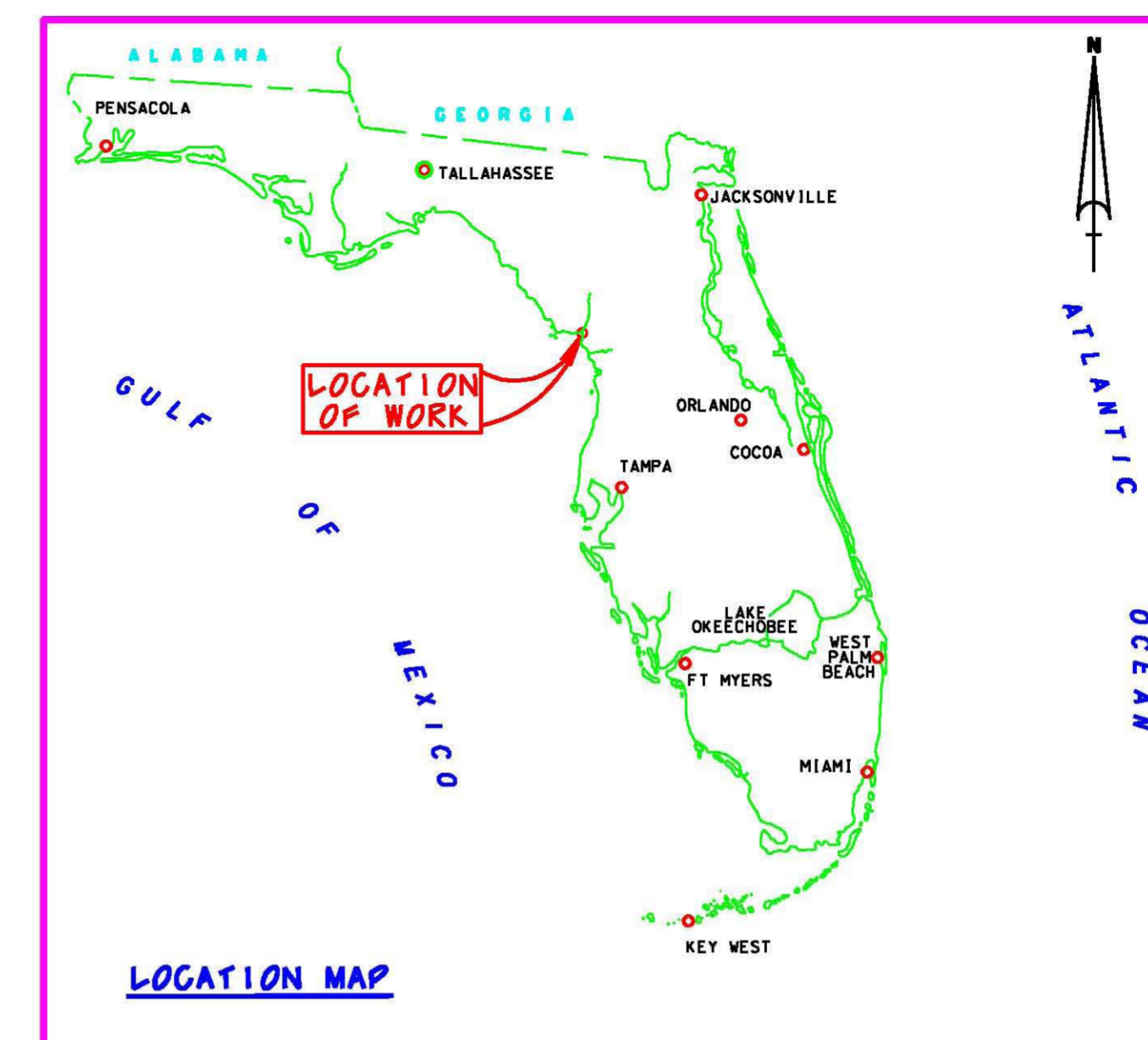


SUWANNEE RIVER, McGRIFF PASS
 DIXIE COUNTY, FLORIDA
 PROJECT CONDITION SURVEY



SURVEY NOTES:

1. REFER TO SURVEY NO. 06-059.
2. ELEVATIONS ARE IN FEET AND TENTHS AND REFER TO MEAN LOWER LOW WATER (MLLW) WHICH IS 2.03 FEET BELOW NAVD 1988.
3. ALL ELEVATIONS ARE BELOW THE CHART DATUM UNLESS PRECEDED BY A (+) SIGN.
4. TIDAL REDUCTIONS WERE MADE FROM A STAFF SET ON A WOODEN PILING OF THE BULKHEAD, AND REFERENCED FROM BENCHMARK "DUNNARY RM-3".
5. PLANE COORDINATES ARE BASED ON THE TRANSVERSE MERCATOR PROJECTION FOR THE WEST ZONE OF FLORIDA AND REFERENCED TO NORTH AMERICAN DATUM OF 1983 (NAD83).
6. ALL AZIMUTHS ARE GRID, RECKONED CLOCKWISE FROM SOUTH.
7. ALL STATIONING REFERS TO THE CENTERLINE OF THE CHANNEL.
8. SURVEY WAS PERFORMED USING DIFFERENTIAL GPS FOR POSITIONING AND UTILIZING THE USCG NAVBEACON SYSTEM AS THE REFERENCE SITE. VERTICAL MEASUREMENTS WERE MADE USING A ROSS SMART SOUNDER DEPTH RECORDER WITH A 200KHZ (HIGH FREQUENCY) TRANSDUCER.
9. AIDS TO NAVIGATION WERE LOCATED DURING THIS SURVEY.
10. THE INFORMATION DEPICTED ON THIS MAP REPRESENTS THE RESULTS OF SURVEYS MADE ON THE DATES INDICATED ABOVE AND CAN ONLY BE CONSIDERED AS INDICATING THE GENERAL CONDITIONS AT THAT TIME. THIS CHART IS SOLELY FOR THE DISTRIBUTION OF AVAILABLE DEPTHS AT THE TIME OF THE SURVEY AND IS NOT TO BE USED FOR NAVIGATION.
11. SURVEY ACCURACY PERFORMANCE STANDARDS, QUALITY CONTROL, AND QUALITY ASSURANCE REQUIREMENTS WERE FOLLOWED DURING THIS SURVEY IN ACCORDANCE WITH USACE EM 110-2-1003, HYDROGRAPHIC SURVEYING, 1 JAN 02.

VESSEL	DATE OF SURVEY	CUT
WB-34	21 JAN 2006	I-II



LEGEND	
• BM	BENCHMARK
⊙	LIGHTED BEACON
□	GREEN DAYBEACON
△	RED DAYBEACON
⊙	RED LIGHTED BUOY
⊙	GREEN LIGHTED BUOY
⊙	CAN BUOY
⊙	NUN BUOY
⊙	TIDE STAFF

US Army Corps of Engineers
 Jacksonville District

SAFETY IN THIS JOB DEPENDS ON YOU

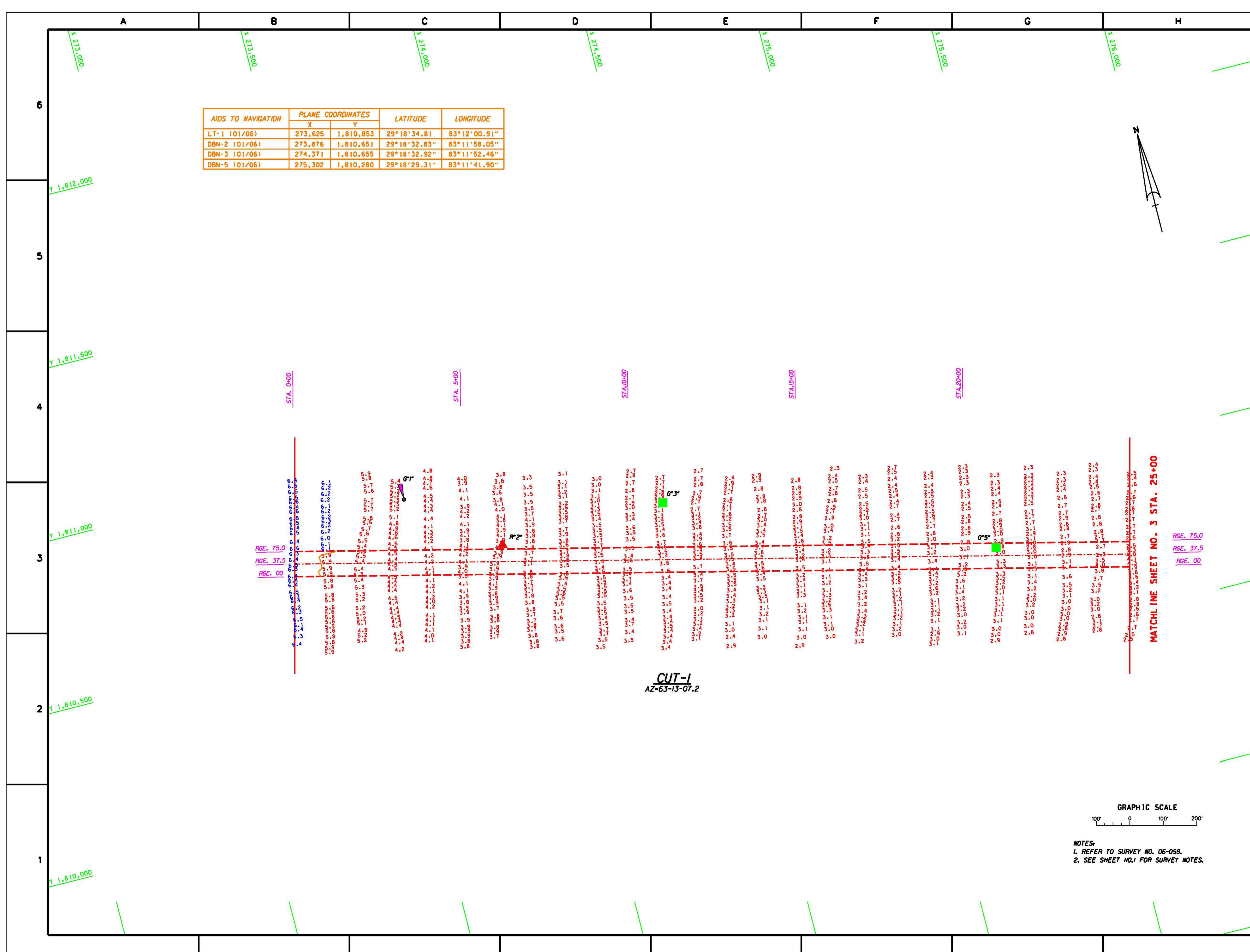
NO.	REVISION	DATE

DEPARTMENT OF THE ARMY
 ENGINEERS
 JACKSONVILLE DISTRICT
 JACKSONVILLE, FLORIDA

DESIGNED BY	DATE	SCALE
DAVID J. ...	21 JAN 2006	AS SHOWN
CHECKED BY	DATE	SCALE
PROJECT NO.	DATE	SCALE
D.O.F.I.E. NO.	DATE	SCALE

SUWANNEE RIVER, McGRUFF PASS, FLORIDA
 PROJECT CONDITION SURVEY
 6-FOOT PROJECT
 COVER, VICINITY AND LOCATION MAP
 PLAN

DRAWING NO.
 1/7



AIDS TO NAVIGATION	PLANE COORDINATES		LATITUDE	LONGITUDE
	X	Y		
LT-1 (01/06)	273,625	1,810,853	29°18'34.81"	83°12'00.91"
DBN-2 (01/06)	273,876	1,810,651	29°18'32.83"	83°11'58.05"
DBN-3 (01/06)	274,371	1,810,655	29°18'32.92"	83°11'52.46"
DBN-5 (01/06)	275,302	1,810,280	29°18'29.31"	83°11'41.90"

CUT-1
AZ-63-13-07.2

MATCH LINE SHEET NO. 3 STA. 25+00



NOTES:
1. REFER TO SURVEY NO. 06-059.
2. SEE SHEET NO.1 FOR SURVEY NOTES.

US Army Corps of Engineers
Jacksonville District

SAFETY IN THIS JOB
DEPENDS ON YOU

DEPARTMENT OF THE ARMY
ENGINEERS
JACKSONVILLE, FLORIDA

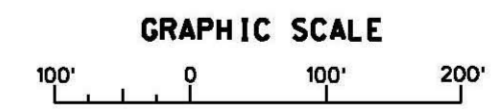
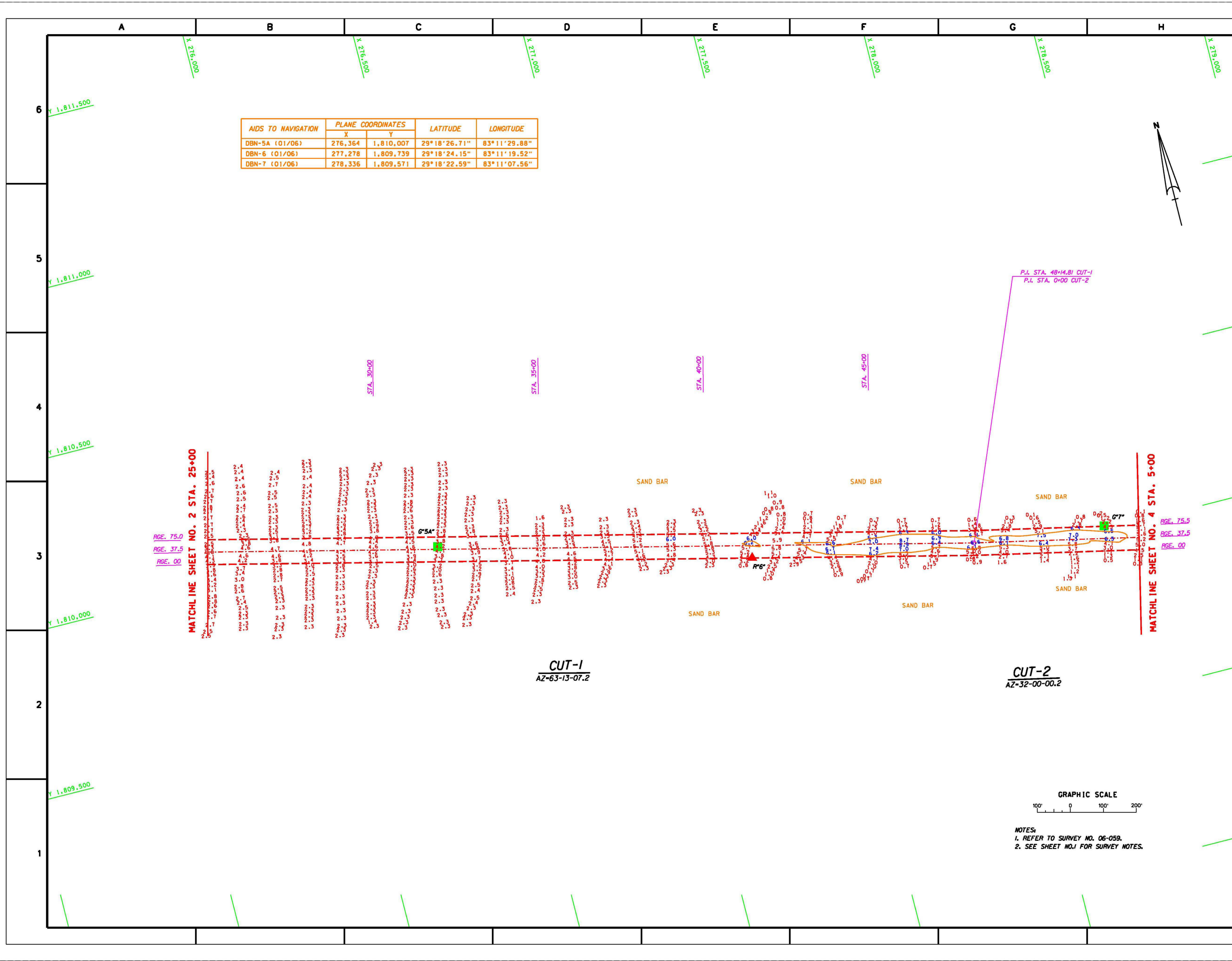
DESIGNED BY: [Blank]
CHECKED BY: [Blank]
DATE: [Blank]
SCALE: AS SHOWN
PROJECT NO.: 06-059
DRAWING NO.: 2/7
D.O.F.I.E. NO.: [Blank]

SUNAWEE RIVER, MCGREFF PASS, FLORIDA
PROJECT CONDITION SURVEY
6-FOOT PROJECT
MCGREFF PASS (WADLEY PASS)
STA. 0+00 THRU STA. 30+00 CUT-1
PLAN

DRAWING NO.
2/7

SHEET 2 of 7

AIDS TO NAVIGATION	PLANE COORDINATES		LATITUDE	LONGITUDE
	X	Y		
DBN-5A (01/06)	276,364	1,810,007	29°18'26.71"	83°11'29.88"
DBN-6 (01/06)	277,278	1,809,739	29°18'24.15"	83°11'19.52"
DBN-7 (01/06)	278,336	1,809,571	29°18'22.59"	83°11'07.56"



NOTES:
 1. REFER TO SURVEY NO. 06-059.
 2. SEE SHEET NO.1 FOR SURVEY NOTES.

US Army Corps of Engineers
Jacksonville District

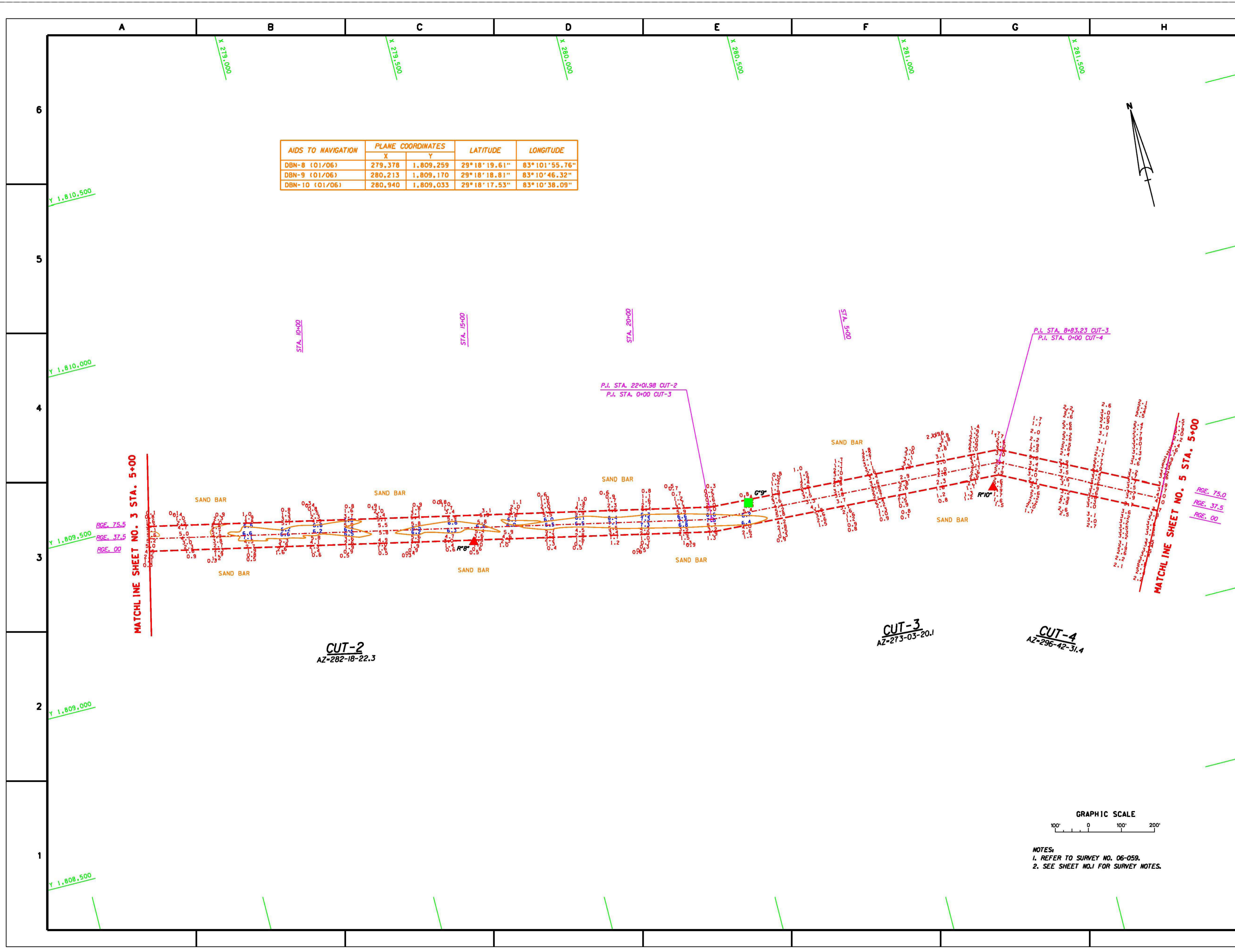
SAFETY IN THIS JOB DEPENDS ON YOU

<p style="text-align: center;">DEPARTMENT OF THE ARMY ENGINEERS JACKSONVILLE, FLORIDA</p>	<p>DESIGNED BY: JAM 2006 CHECKED BY: JAM 2006 DATE: JAN 2006</p> <p>D.O.F. FILE NO.</p>
---	---

SWANEE RIVER, MCGREFF PASS, FLORIDA
 PROJECT CONDITION SURVEY
 6-FOOT PROJECT
 MCGREFF PASS (WADLEY PASS)
 STA. 30+00 CUT-1 THRU STA. 5+00 CUT-2
 PLAN

DRAWING NO.
3/7

SHEET 3 OF 7



US Army Corps of Engineers
Jacksonville District

SAFETY ON THIS JOB
DEPENDS ON YOU

	Approved
	Checked
	Drawn
	Field
	Issue
	Revised
	Scale
	Date
	Number

DEPARTMENT OF THE ARMY
ENGINEERS
JACKSONVILLE, FLORIDA

DESIGNED BY:
CHECKED BY:
DATE:
SCALE:
PLANTING DATE:
DRAWN BY:
DATE:
D.O.F.I.E. NO.:

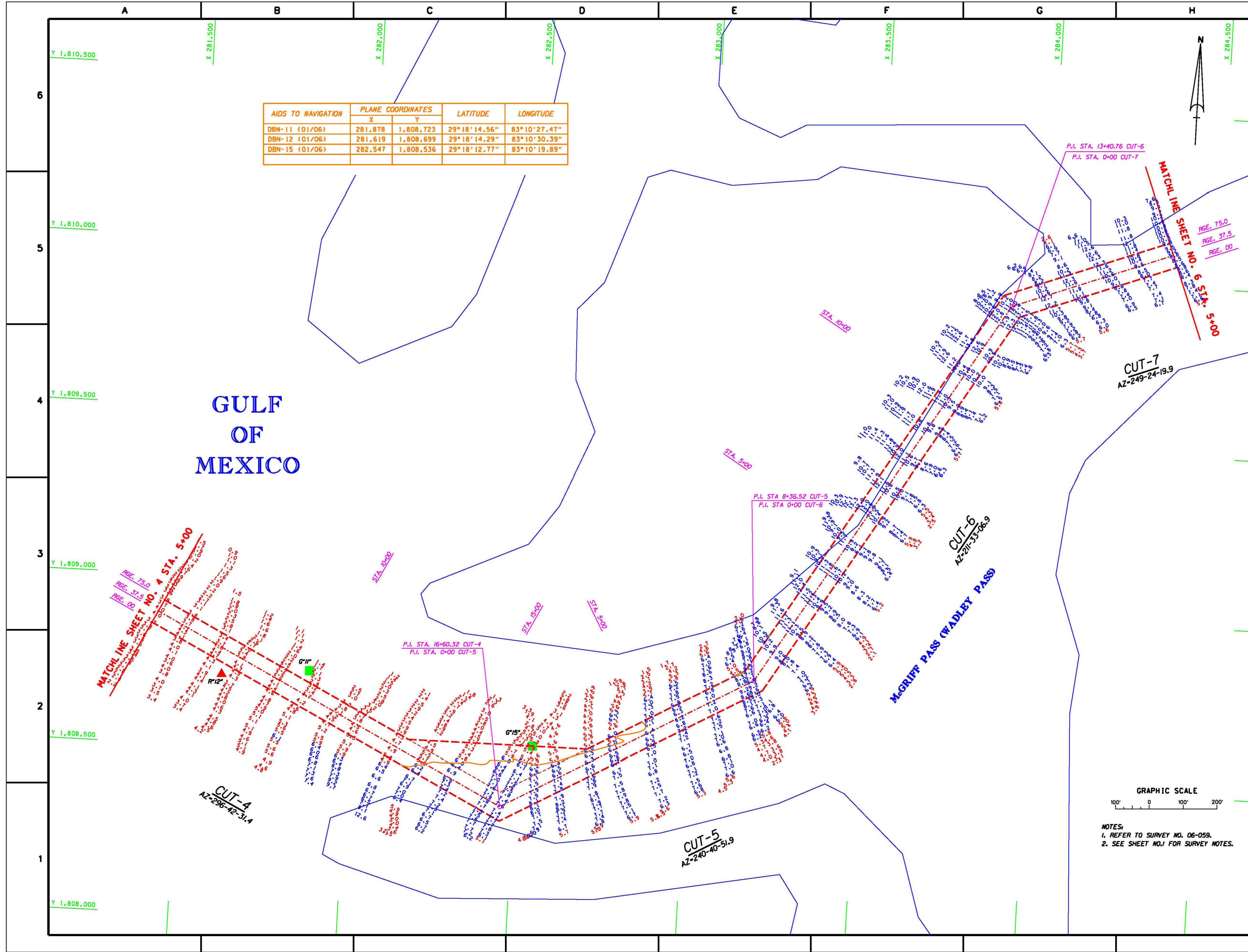
SUNNYSIDE RIVER, MCGREGG PASS, FLORIDA
PROJECT CONDITION SURVEY
6-FOOT PROJECT
MCGREGG PASS (WADLEY PASS)
STA. 5+00 CUT-2 THRU STA. 5+00 CUT-4
PLAN

DRAWING NO.
4/7
SHEET 4 OF 7

GRAPHIC SCALE

100' 0 100' 200'

NOTES:
1. REFER TO SURVEY NO. 06-059.
2. SEE SHEET NO.1 FOR SURVEY NOTES.



AIDS TO NAVIGATION	PLANE COORDINATES		LATITUDE	LONGITUDE
	X	Y		
DBN-11 (01/06)	281,878	1,808,723	29°18'14.56"	83°10'27.47"
DBN-12 (01/06)	281,619	1,808,699	29°18'14.29"	83°10'30.39"
DBN-15 (01/06)	282,547	1,808,536	29°18'12.77"	83°10'19.89"

US Army Corps of Engineers
Jacksonville District

SAFETY IN THIS JOB
DEPENDS ON YOU

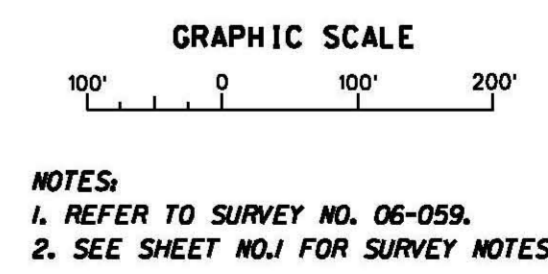
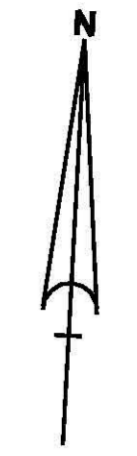
Designated by	DATE
Checked by	DATE
Reviewed by	DATE
Approved by	DATE

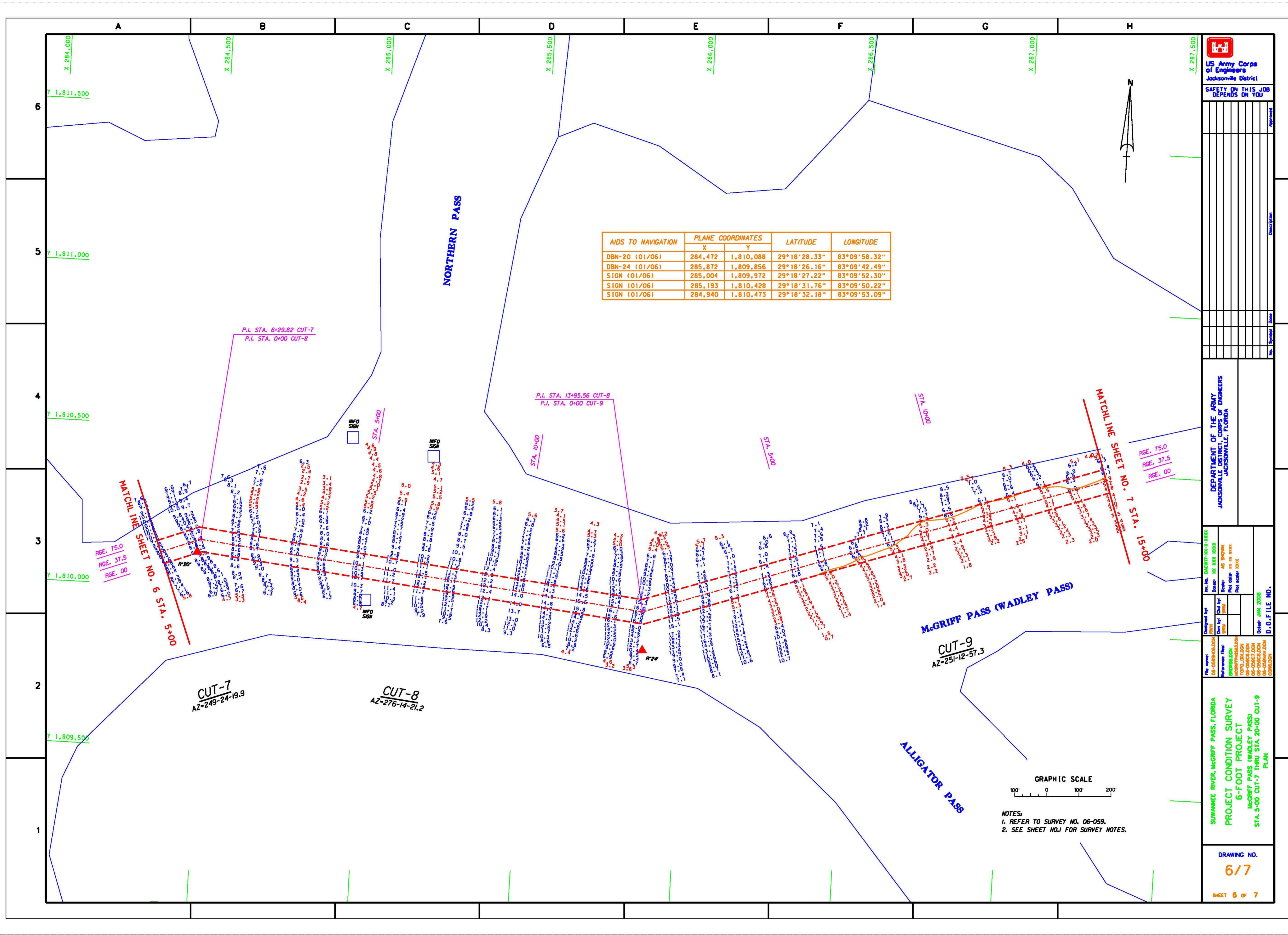
DEPARTMENT OF THE ARMY
ENGINEERS
JACKSONVILLE DISTRICT
JACKSONVILLE, FLORIDA


File name	DATE
Reference file	DATE
Project name	DATE
D.O.F.I.E. NO.	DATE

SUNNAMED RIVER, MCGUFF PASS, FLORIDA
PROJECT CONDITION SURVEY
6-FOOT PROJECT
MCGUFF PASS (WADLEY PASS)
STA. 500 CUT 4 THRU STA. 5+00 CUT-7
PLAN

DRAWING NO.
5/7
SHEET 5 OF 7






 US Army Corps of Engineers
 Jacksonville District

SAFETY IN THIS JOB DEPENDS ON YOU

No.	Symbol	Date	Appr.

DEPARTMENT OF THE ARMY
 ENGINEERS
 JACKSONVILLE DISTRICT
 JACKSONVILLE, FLORIDA

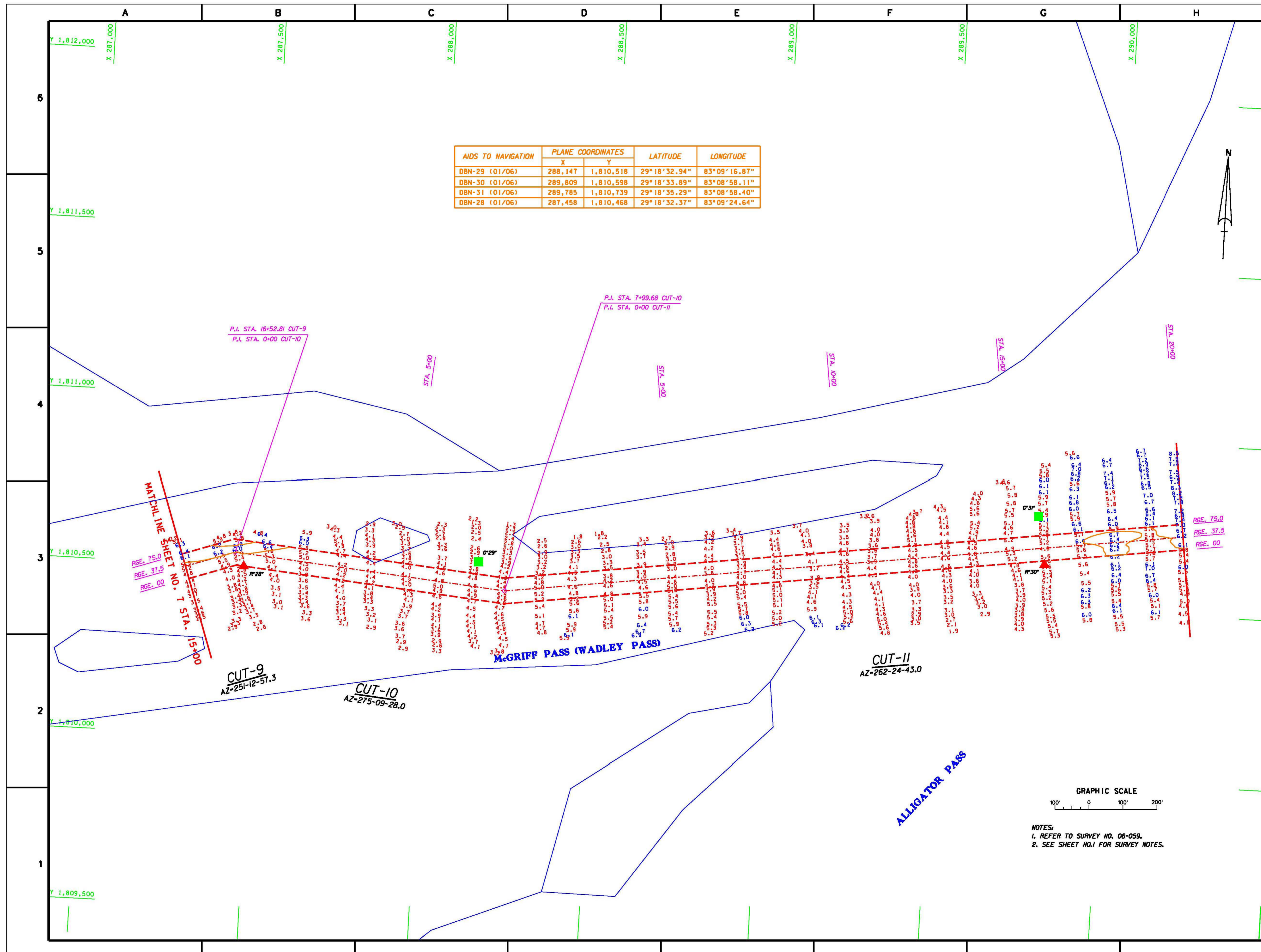
Designated by: DACTY7-20-3-3232
 Date: 03/20/06
 Scale: AS SHOWN
 Date: 03/20/06
 Date: 03/20/06
 Date: 03/20/06

File name: 06-059ah06.dwg
 Reference: 06-059ah06.dwg
 06-059ah06.dwg
 06-059ah06.dwg
 06-059ah06.dwg
 06-059ah06.dwg
 06-059ah06.dwg
 06-059ah06.dwg
 06-059ah06.dwg
 06-059ah06.dwg
 06-059ah06.dwg

SUWANNEE RIVER, McGRIFF PASS, FLORIDA
 PROJECT CONDITION SURVEY
 6-FOOT PROJECT
 McGRIFF PASS (WADLEY PASS)
 STA. 5+00 CUT-7 THRU STA. 20+00 CUT-9
 PLAN

DRAWING NO.
6/7
 SHEET 6 OF 7

GRAPHIC SCALE
 100' 0 100' 200'
 NOTES:
 1. REFER TO SURVEY NO. 06-059.
 2. SEE SHEET NO.1 FOR SURVEY NOTES.



AIDS TO NAVIGATION	PLANE COORDINATES		LATITUDE	LONGITUDE
	X	Y		
DBN-29 (01/06)	288,147	1,810,518	29°18'32.94"	83°09'16.87"
DBN-30 (01/06)	289,809	1,810,598	29°18'33.89"	83°08'58.11"
DBN-31 (01/06)	289,785	1,810,739	29°18'35.29"	83°08'58.40"
DBN-28 (01/06)	287,458	1,810,468	29°18'32.37"	83°09'24.64"

US Army Corps of Engineers
Jacksonville District

SAFETY IN THIS JOB DEPENDS ON YOU

DEPARTMENT OF THE ARMY
ENGINEERS
JACKSONVILLE, FLORIDA

DESIGNED BY: DACTY72-3-3232
CHECKED BY: [Signature]
DATE: 06/20/06
SCALE: AS SHOWN
PROJECT NO.: 06-059
SHEET NO.: 7 OF 7

SUNAWEE RIVER, MCGRIFF PASS, FLORIDA
PROJECT CONDITION SURVEY
6-FOOT PROJECT
MCGRIFF PASS (WADLEY PASS)
STA. 20+00 CUT-9 THRU STA. 20+00 CUT-II
PLAN

DRAWING NO.
7/7
SHEET 7 OF 7

GRAPHIC SCALE
100' 0 100' 200'
NOTES:
1. REFER TO SURVEY NO. 06-059.
2. SEE SHEET NO.1 FOR SURVEY NOTES.