

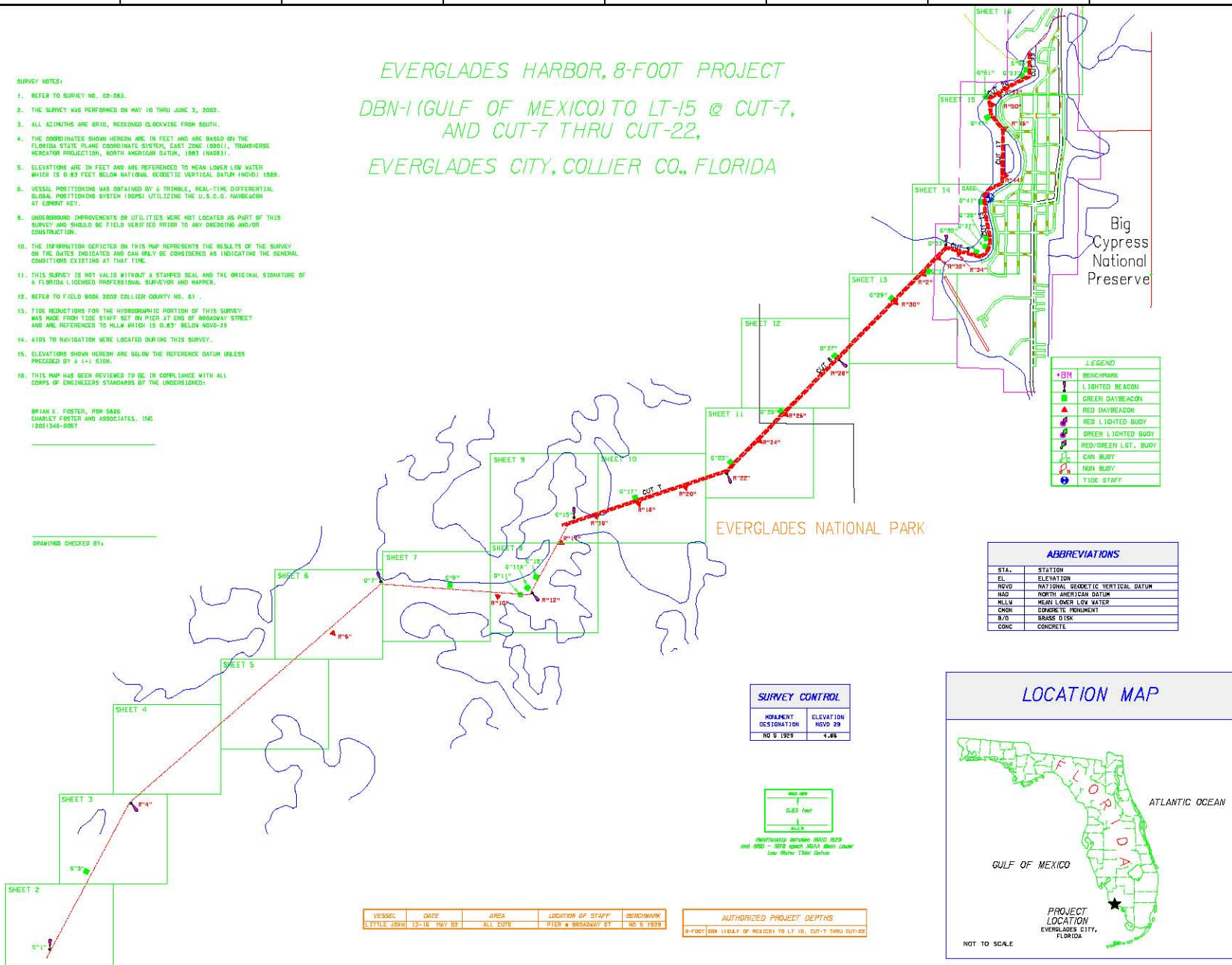
EVERGLADES HARBOR, 8-FOOT PROJECT
 DBN-1 (GULF OF MEXICO) TO LT-15 @ CUT-7,
 AND CUT-7 THRU CUT-22,
 EVERGLADES CITY, COLLIER CO., FLORIDA

SURVEY NOTES:

1. REFER TO SURVEY NO. 02-063.
2. THE SURVEY WAS PERFORMED ON MAY 10 THRU JUNE 3, 2002.
3. ALL AZIMUTHS ARE GRID, RECKONED CLOCKWISE FROM SOUTH.
4. THE COORDINATES SHOWN HEREON ARE IN FEET AND ARE BASED ON THE FLORIDA STATE PLANE COORDINATE SYSTEM, EAST ZONE (0901), TRANSVERSE MERCATOR PROJECTION, NORTH AMERICAN DATUM, 1983 (NAD83).
5. ELEVATIONS ARE IN FEET AND ARE REFERENCED TO MEAN LOWER LOW WATER WHICH IS 0.83 FEET BELOW NATIONAL GEODETIC VERTICAL DATUM (NGVD) 1989.
6. VESSEL POSITIONING WAS OBTAINED BY A TRIMBLE, REAL-TIME DIFFERENTIAL GLOBAL POSITIONING SYSTEM (DGPS) UTILIZING THE U.S.C.G. NAVBEACON AT EDGEMO KEY.
7. UNDERGROUND IMPROVEMENTS OR UTILITIES WERE NOT LOCATED AS PART OF THIS SURVEY AND SHOULD BE FIELD VERIFIED PRIOR TO ANY DREDGING AND/OR CONSTRUCTION.
8. THE INFORMATION DEPICTED ON THIS MAP REPRESENTS THE RESULTS OF THE SURVEY ON THE DATES INDICATED AND CAN ONLY BE CONSIDERED AS INDICATING THE GENERAL CONDITIONS EXISTING AT THAT TIME.
9. THIS SURVEY IS NOT VALID WITHOUT A STAMPED SEAL AND THE ORIGINAL SIGNATURE OF A FLORIDA LICENSED PROFESSIONAL SURVEYOR AND MAPPER.
10. REFER TO FIELD BOOK 2002 COLLIER COUNTY NO. 51.
11. TIDE REDUCTIONS FOR THE HYDROGRAPHIC PORTION OF THIS SURVEY WAS MADE FROM TIDE STAFF SET ON PIER AT END OF BROADWAY STREET AND ARE REFERENCED TO MLLW WHICH IS 0.83' BELOW NGVD-29.
12. AIDS TO NAVIGATION WERE LOCATED DURING THIS SURVEY.
13. ELEVATIONS SHOWN HEREON ARE BELOW THE REFERENCE DATUM UNLESS PRECEDED BY A (+) SIGN.
14. THIS MAP HAS BEEN REVIEWED TO BE IN COMPLIANCE WITH ALL CORPS OF ENGINEERS STANDARDS BY THE UNDERSIGNED:

BRIAN K. FOSTER, PSM 5426
 CHARLEY FOSTER AND ASSOCIATES, INC.
 1300 34th Street

DRAWINGS CHECKED BY:



LEGEND

- BM BENCHMARK
- ⬆ LIGHTED BEACON
- ⬆ GREEN DAYBEACON
- ⬆ RED DAYBEACON
- ⬆ RED LIGHTED BUOY
- ⬆ GREEN LIGHTED BUOY
- ⬆ RED/GREEN L.T. BUOY
- ⬆ CAN BUOY
- ⬆ NON BUOY
- ⬆ TIDE STAFF

ABBREVIATIONS

STA.	STATION
EL.	ELEVATION
NGVD	NATIONAL GEODETIC VERTICAL DATUM
NAD	NORTH AMERICAN DATUM
MLLW	MEAN LOWER LOW WATER
CON	CONCRETE FOUWMENT
B.O.	BRASS DISK
CONC	CONCRETE

SURVEY CONTROL

POINT	ELEVATION
NO 5 1929	4.46



VESSEL	DATE	AREA	LOCATION OF STAFF	BENCHMARK
LITTLE JOHN	12-16 MAY 02	ALL CUTS	PIER # BROADWAY ST	NO 5 1928

AUTHORIZED PROJECT DEPTHS
 8'-FOOT (MIN. LEGAL) OF DEPTH TO LT 15, CUT-7 THRU CUT-22



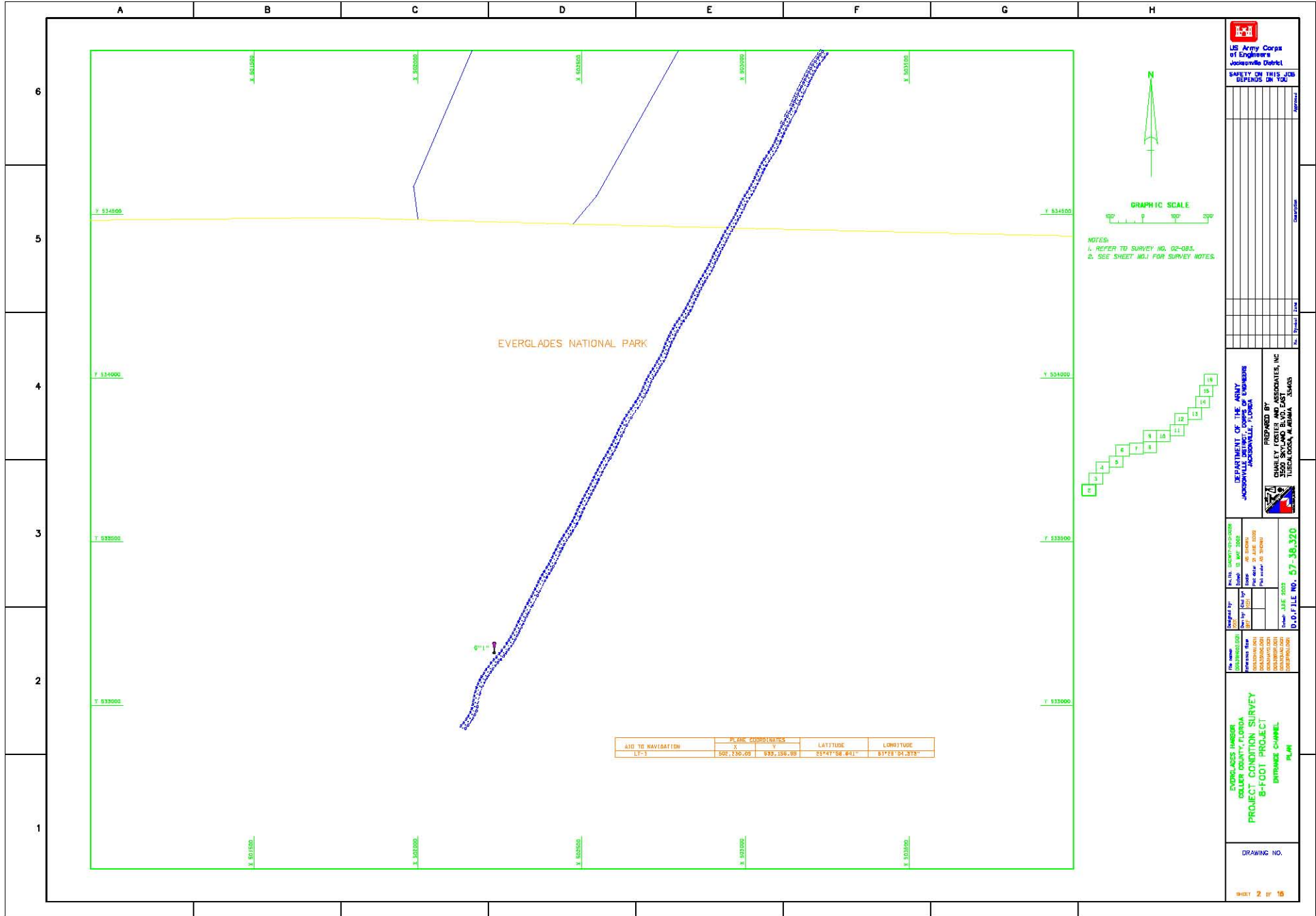
US Army Corps of Engineers Jacksonville District
 SAFETY ON THIS JOB DEPENDS ON YOU

DEPARTMENT OF THE ARMY
 JACKSONVILLE DISTRICT, CORPS OF ENGINEERS
 JACKSONVILLE, FLORIDA
 PREPARED BY
 CHARLEY FOSTER AND ASSOCIATES, INC.
 TALLAHASSEE, FLORIDA

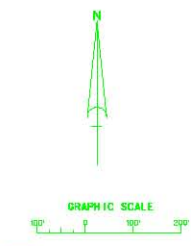
DATE: 05/15/02
 DRAWN BY: BKF
 CHECKED BY: BKF
 PROJECT NO.: 02-063
 SHEET NO.: 1 OF 16

EVERGLADES HARBOR
 COLLIER COUNTY, FLORIDA
 PROJECT: CONDITION SURVEY
 8-FOOT PROJECT
 CUT-7 THRU CUT-22
 CENTER

DRAWINGS NO.
 SHEET 1 OF 16



EVERGLADES NATIONAL PARK



NOTES:
 1. REFER TO SURVEY NO. 62-083.
 2. SEE SHEET NO.1 FOR SURVEY NOTES.

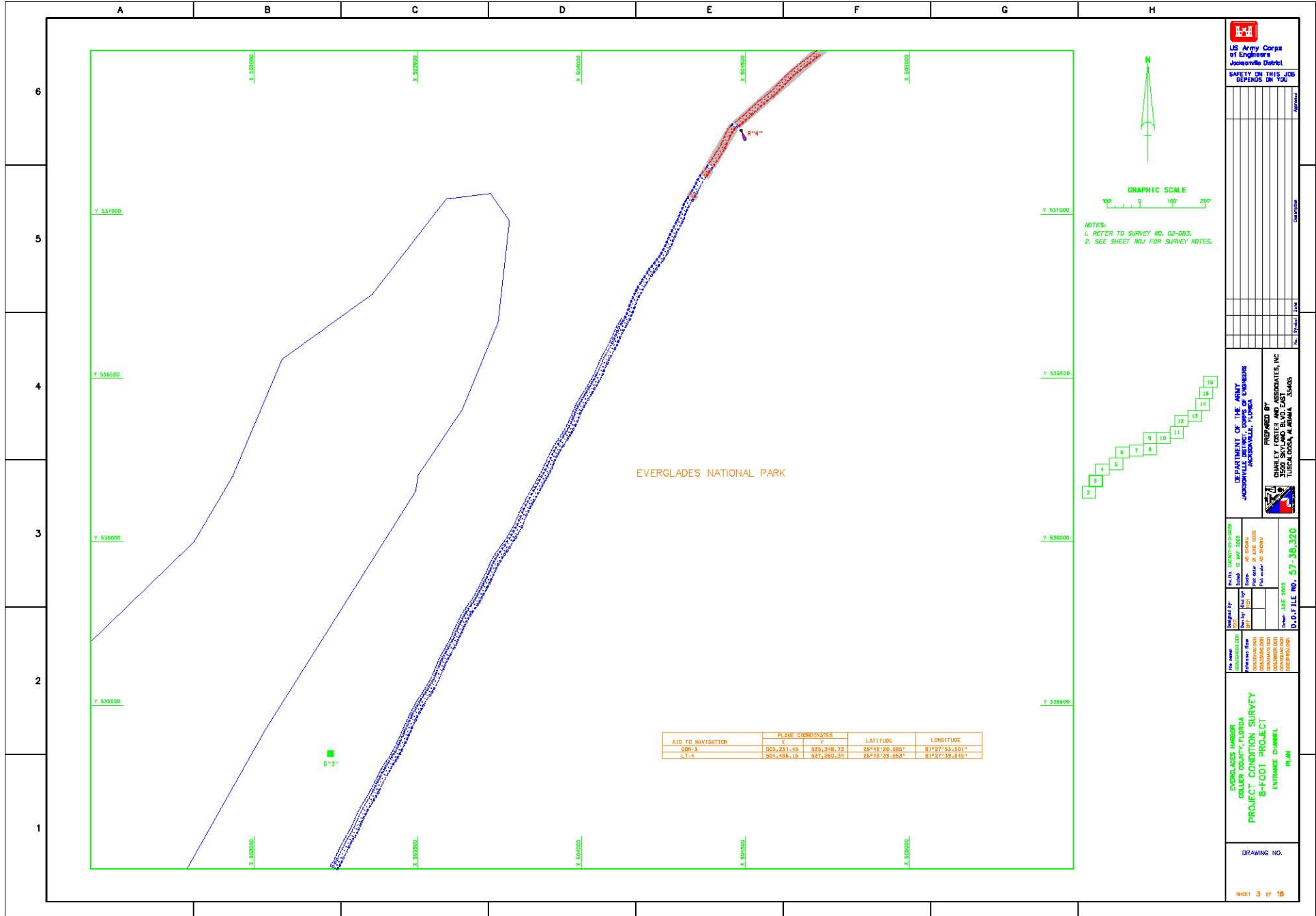
AID TO NAVIGATION	PLANE COORDINATES		LATITUDE	LONGITUDE
	X	Y		
LT-3	507,230.05	535,185.95	25°47'58" #41"	81°48'01.371"

US Army Corps of Engineers
 Jacksonville District
SAFETY ON THIS JOB DEPENDS ON YOU

DEPARTMENT OF THE ARMY
 JACKSONVILLE DISTRICT, CORPS OF ENGINEERS
 JACKSONVILLE, FLORIDA
 PREPARED BY
 CHANLEY CENTER AND ASSOCIATES, INC.
 TULSA, OKLA. & ARMA, TEXAS

EVERGLADES HARBOR
 COLLIER COUNTY, FLORIDA
 PROJECT: CONDITION SURVEY
 B-FOOT PROJECT
 ENTRANCE CHANNEL
 PLAN

DRAWING NO.
 SHEET 2 OF 16



EVERGLADES NATIONAL PARK

NOTES:
 1. REFER TO SURVEY NO. 02-003.
 2. SEE SHEET NO. 1 FOR SURVEY NOTES.

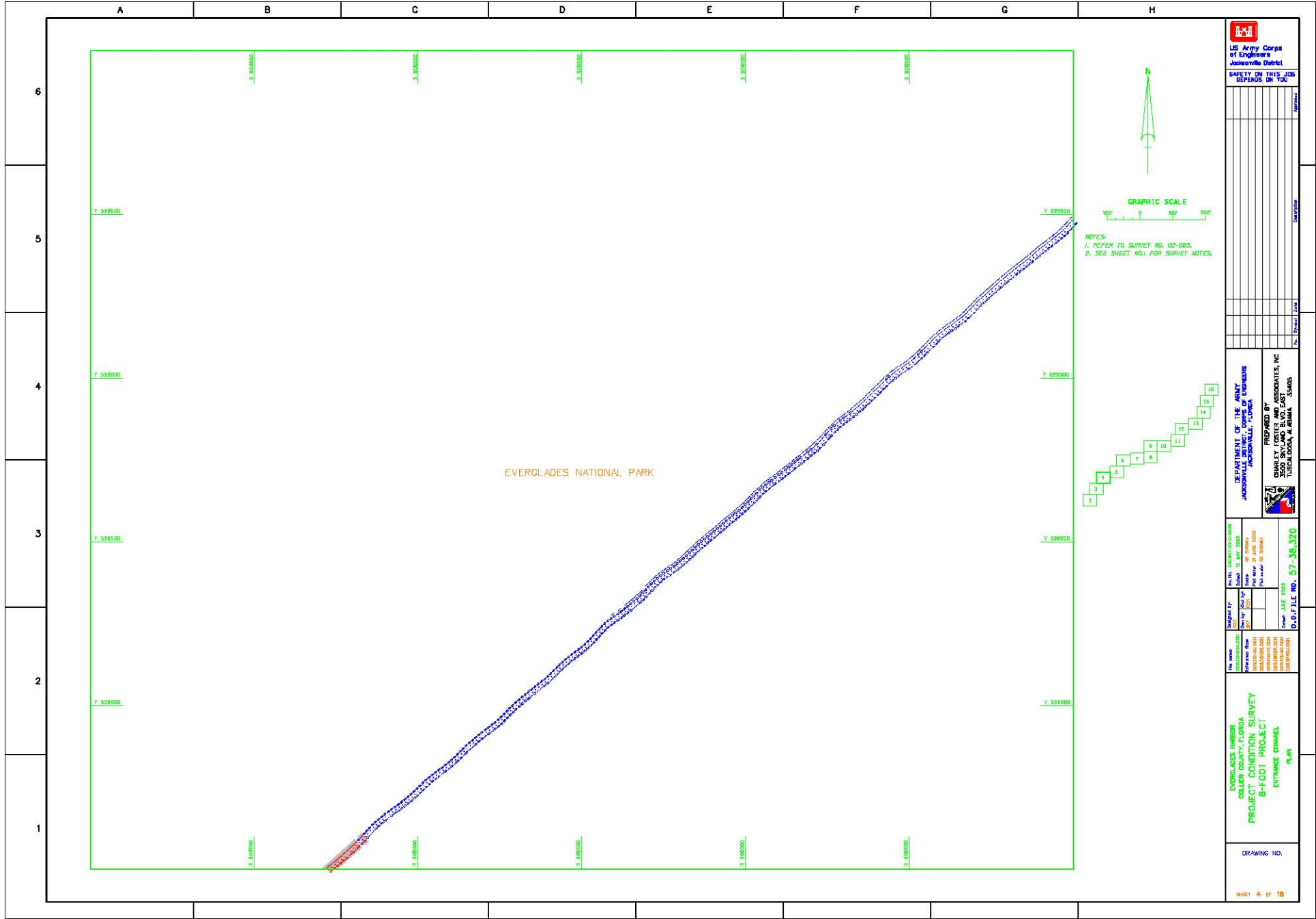
AID TO NAVIGATION	PLANE COORDINATES		LATITUDE	LONGITUDE
	X	Y		
BBN-3	505,831.45	535,348.73	25°48'20.885"	81°27'53.401"
L-1-4	505,488.15	537,285.24	25°48'39.893"	81°27'39.445"

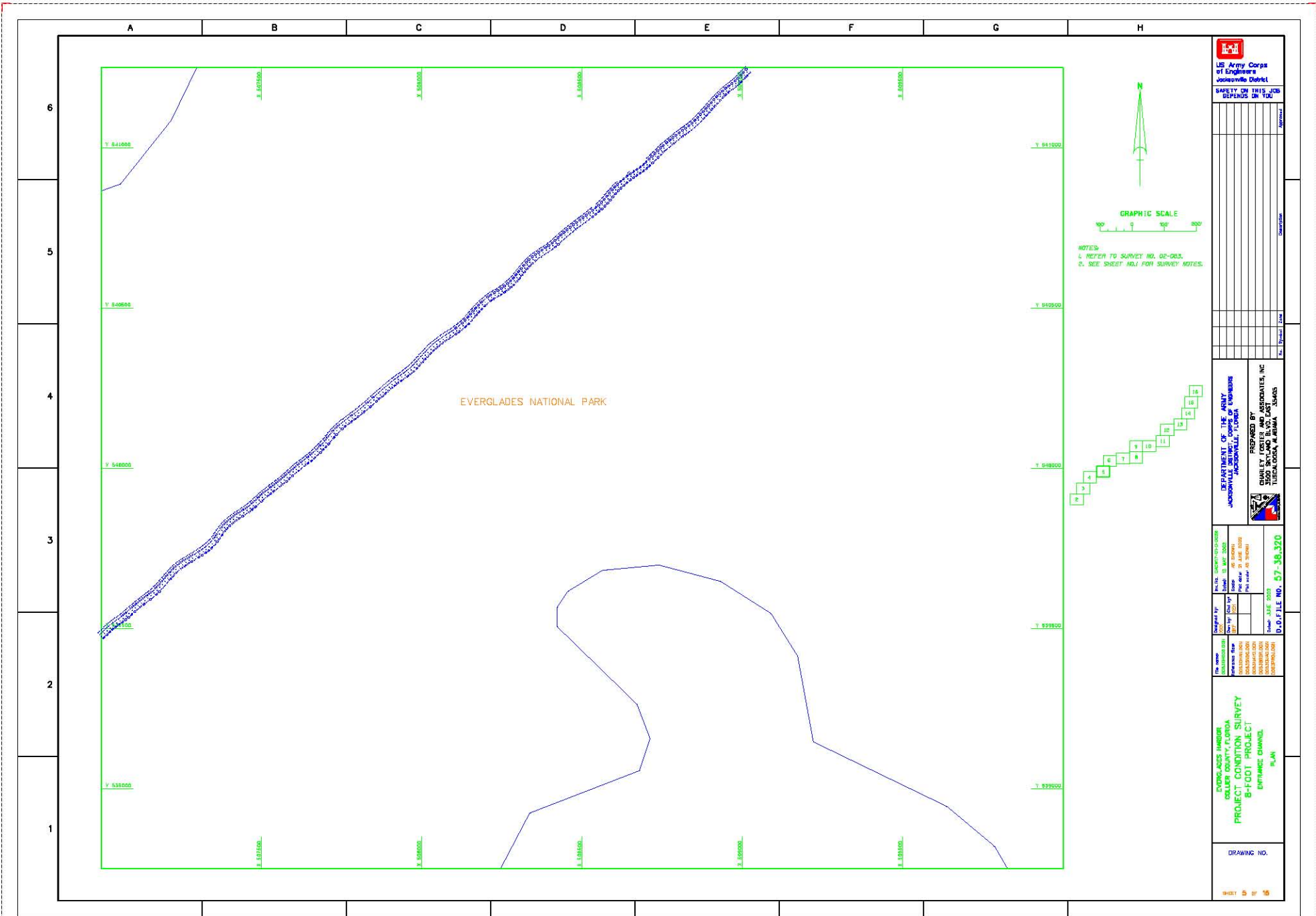

 US Army Corps of Engineers
 Jacksonville District
 SAFETY ON THIS JOB DEPENDS ON YOU

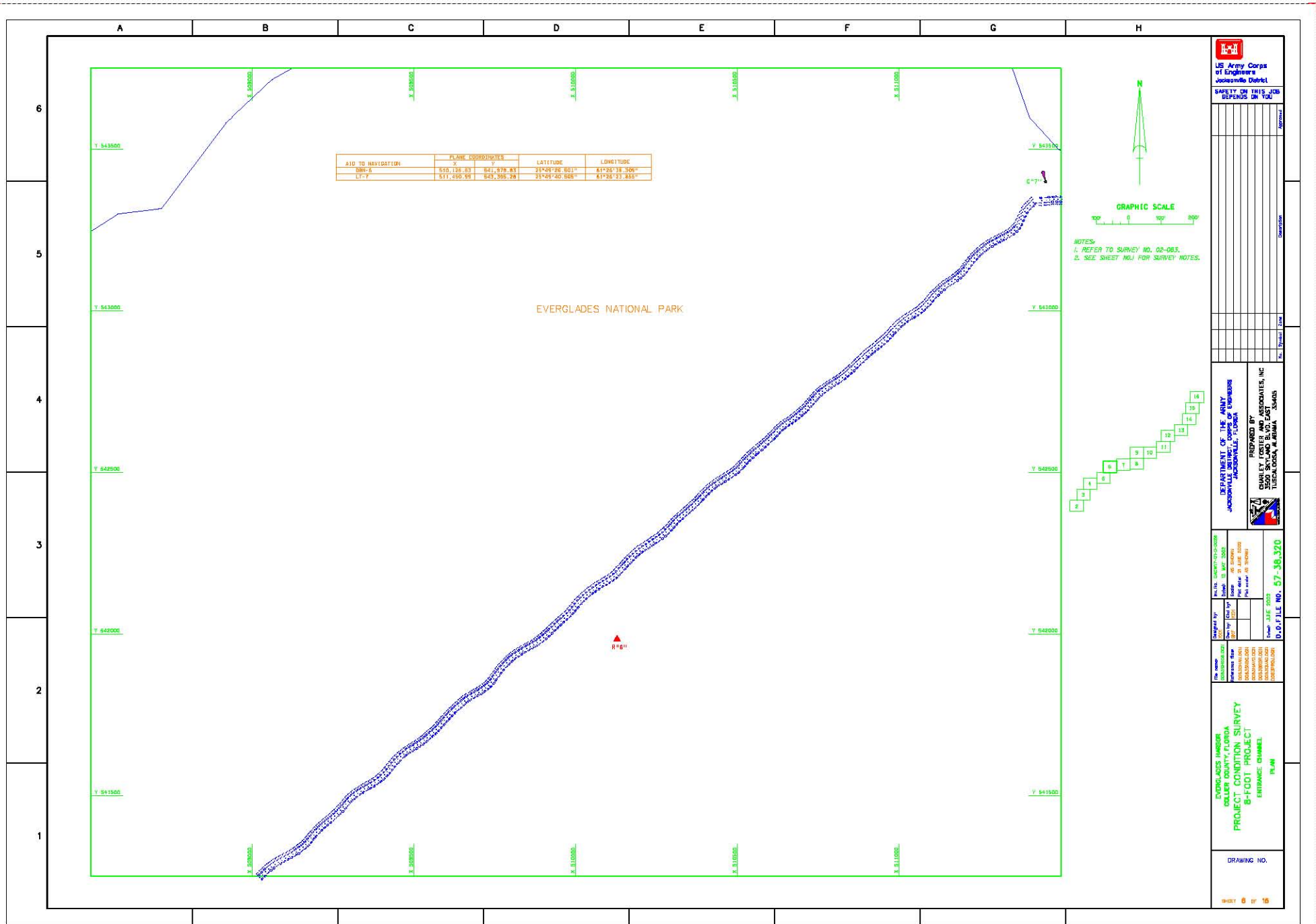
DEPARTMENT OF THE ARMY
 JACKSONVILLE DISTRICT, CORPS OF ENGINEERS
 JACKSONVILLE, FLORIDA
 PREPARED BY
 CHANLEY CENTER AND ASSOCIATES, INC.
 TULSA, OKLAHOMA
 TULSA, OKLAHOMA, ARAMA 154045

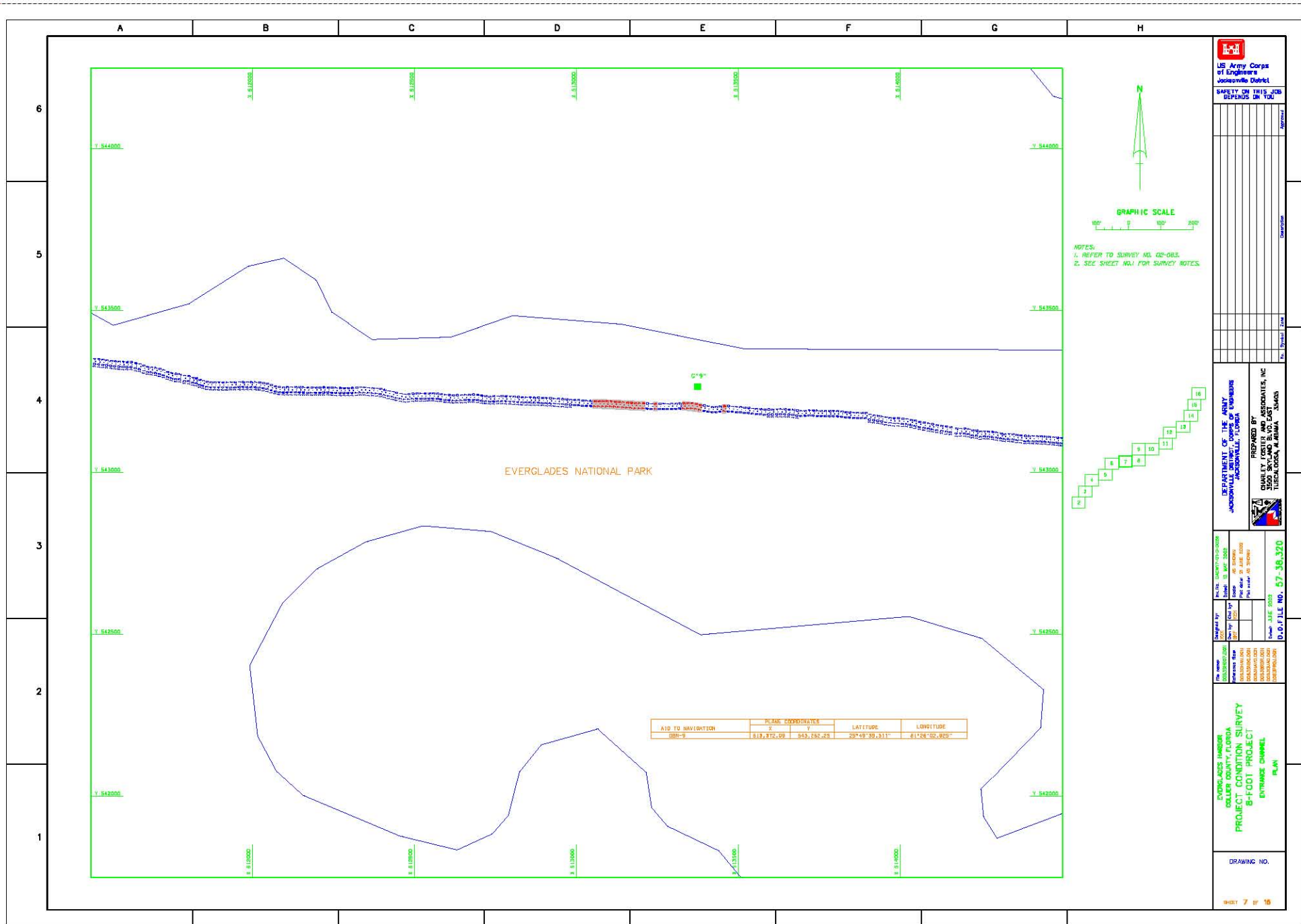
EVERGLADES HARBOR
 COLLIER COUNTY, FLORIDA
 PROJECT: CONDITION SURVEY
 B-FOOT PROJECT
 ENTRANCE CHANNEL
 PLAN

DRAWINGS NO.
 SHEET 3 OF 16









US Army Corps of Engineers
Jacksonville District

SAFETY ON THIS JOB DEPENDS ON YOU

DEPARTMENT OF THE ARMY
JACKSONVILLE DISTRICT, CORPS OF ENGINEERS
JACKSONVILLE, FLORIDA

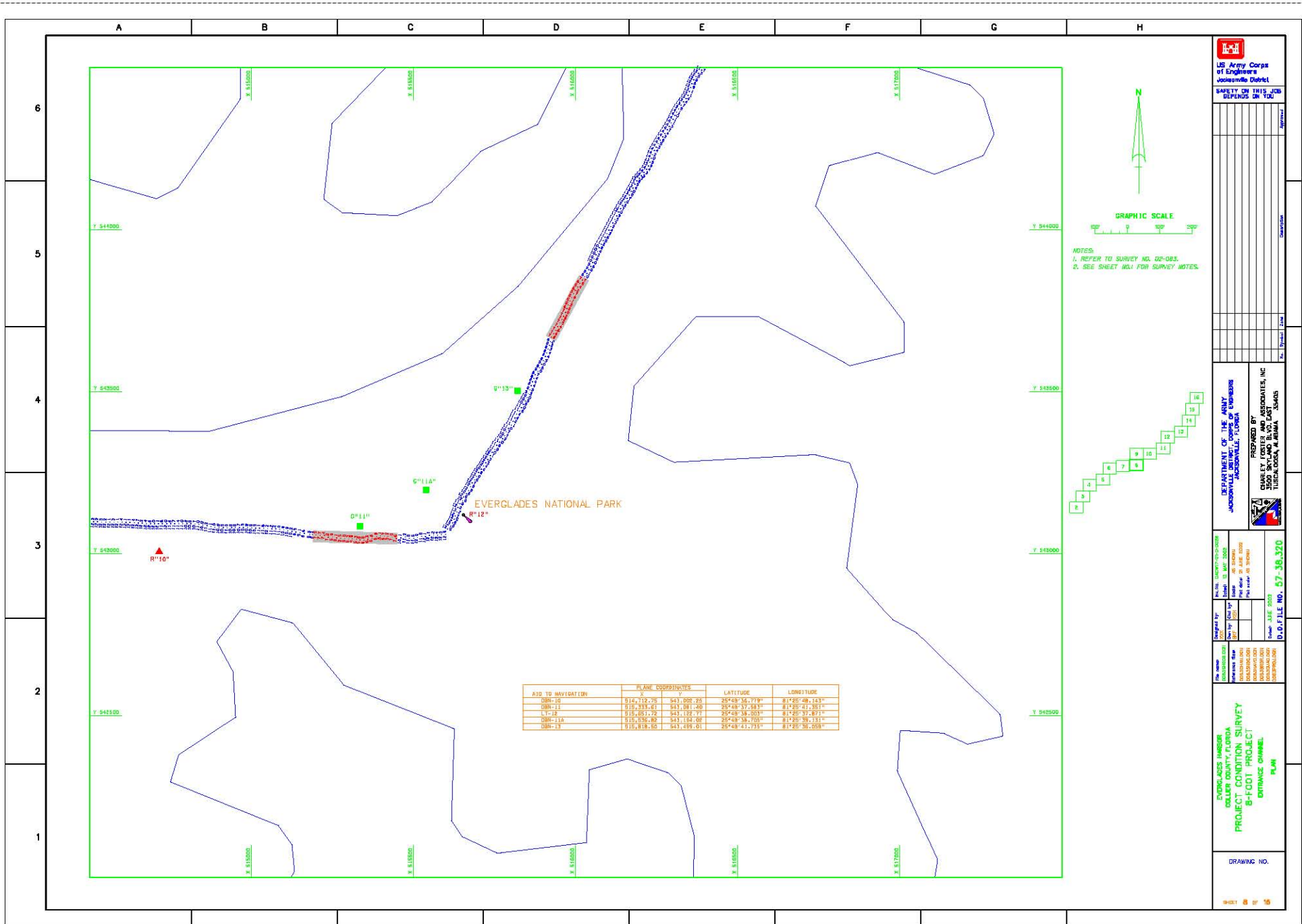
PREPARED BY
CRANLEY CENTER AND ASSOCIATES, INC.
TUSCALOOSA, ALABAMA

Project: EVERGLADES HARBOR
 Location: COLLEGE COUNTY, FLORIDA
 Project: PROJECT CONDITION SURVEY
 Title: 8-FOOT PROJECT
 Drawing: ENTRANCE CHANNEL PLAN

Drawn by: []
 Checked by: []
 Date: []
 Scale: []
 Plot date: []
 Plot scale: []

D.W.D. FILE NO. 57-38.320

DRAWINGS NO.
 SHEET 7 OF 16



US Army Corps of Engineers Jacksonville District

SAFETY ON THIS JOB DEPENDS ON YOU

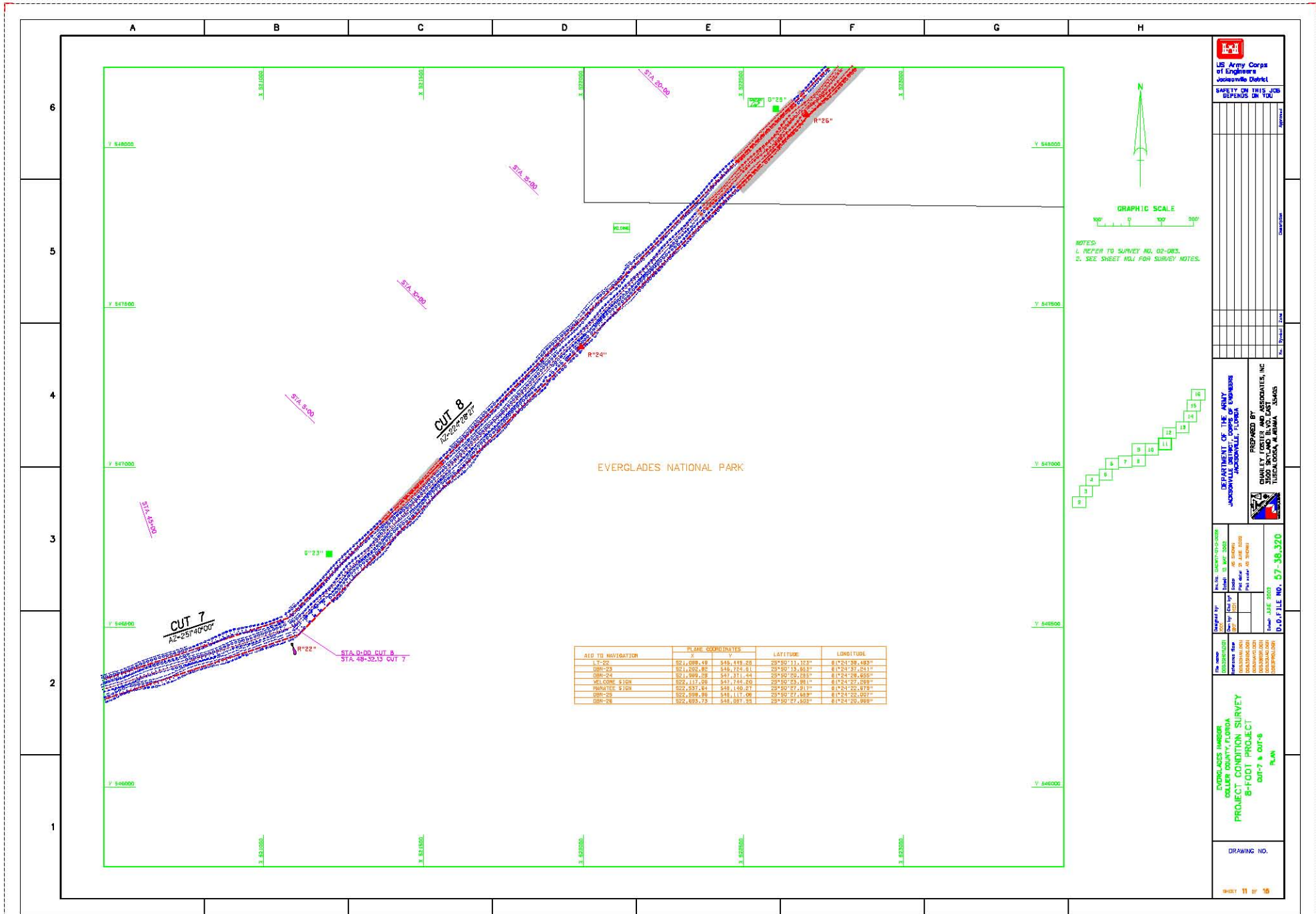
DEPARTMENT OF THE ARMY
ANDERSONVILLE DISTRICT, CORPS OF ENGINEERS
JACKSONVILLE, FLORIDA

PREPARED BY
CRANLEY CENTER AND ASSOCIATES, INC.
TULSA, OKLAHOMA

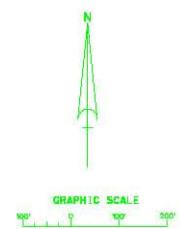
PROJECT NO. 67-38-320
DRAWING NO. 8 OF 10

EVERGLADES HARBOR
COLLIER COUNTY, FLORIDA
PROJECT CONDITION SURVEY
8-FOOT PROJECT
ENTRANCE CHANNEL
PLAN

DRAWING NO.



US Army Corps of Engineers Jacksonville District
SAFETY ON THIS JOB DEPENDS ON YOU



NOTES:
1. REFER TO SURVEY NO. 02-083.
2. SEE SHEET NO.1 FOR SURVEY NOTES.

Author	
Checker	
Designer	
Plotter	
Scale	
Sheet	
Project	
Drawn	
Checked	
Reviewed	
Approved	

DEPARTMENT OF THE ARMY
JACKSONVILLE DISTRICT, CORPS OF ENGINEERS
JACKSONVILLE, FLORIDA

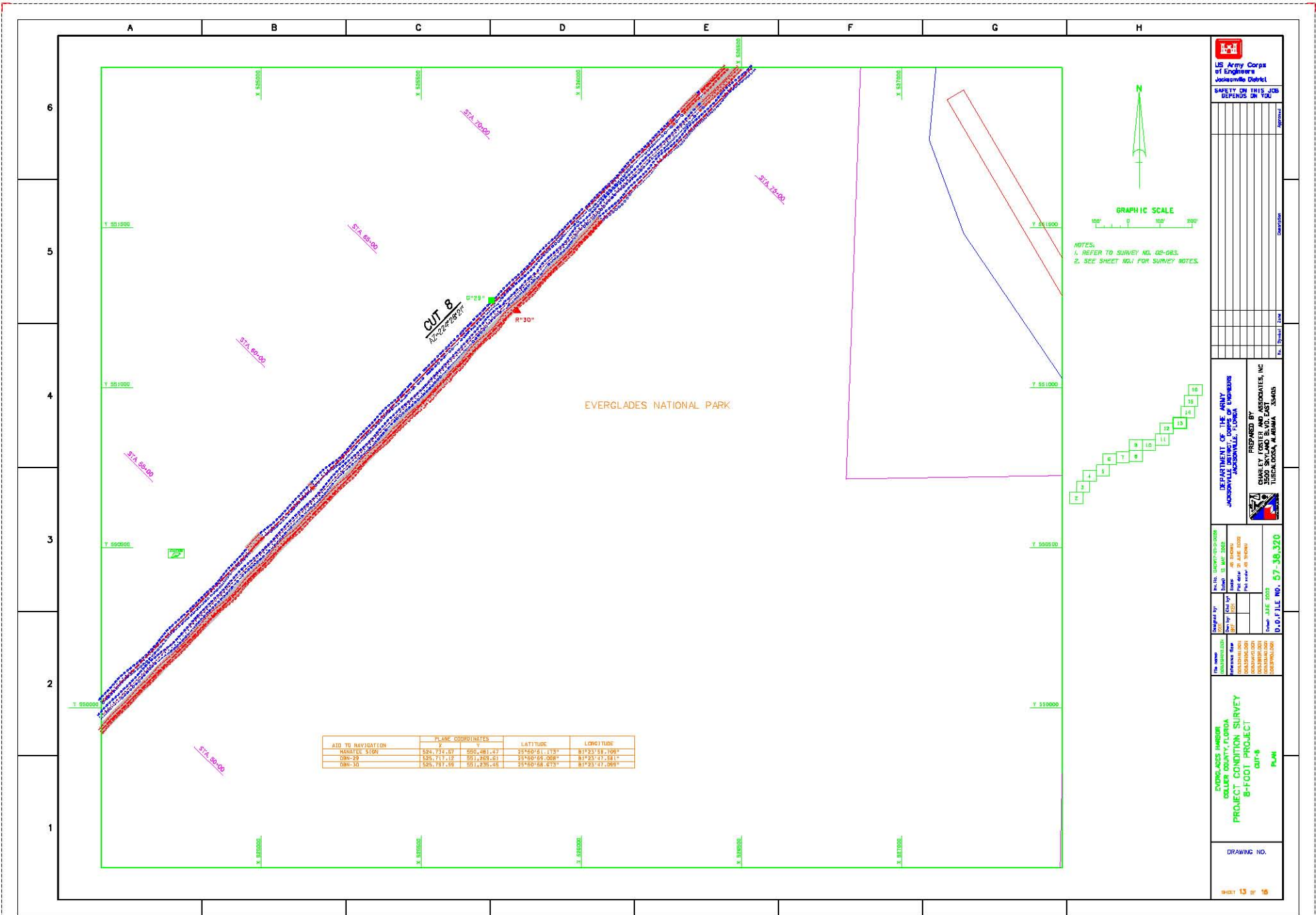
PREPARED BY
CRANLEY CENTER AND ASSOCIATES, INC.
TUSCALOOSA, ALABAMA

Drawn by: [Name]
Checked by: [Name]
Reviewed by: [Name]
Approved by: [Name]

DATE: [Date]
PROJECT NO.: [Number]
SHEET NO.: [Number]

EVERGLADES HARBOR
COLLIER COUNTY, FLORIDA
PROJECT: CONDITION SURVEY
8-FOOT PROJECT
cut-7 & cut-8
PLAN

DRAWING NO.
SHEET 11 OF 16

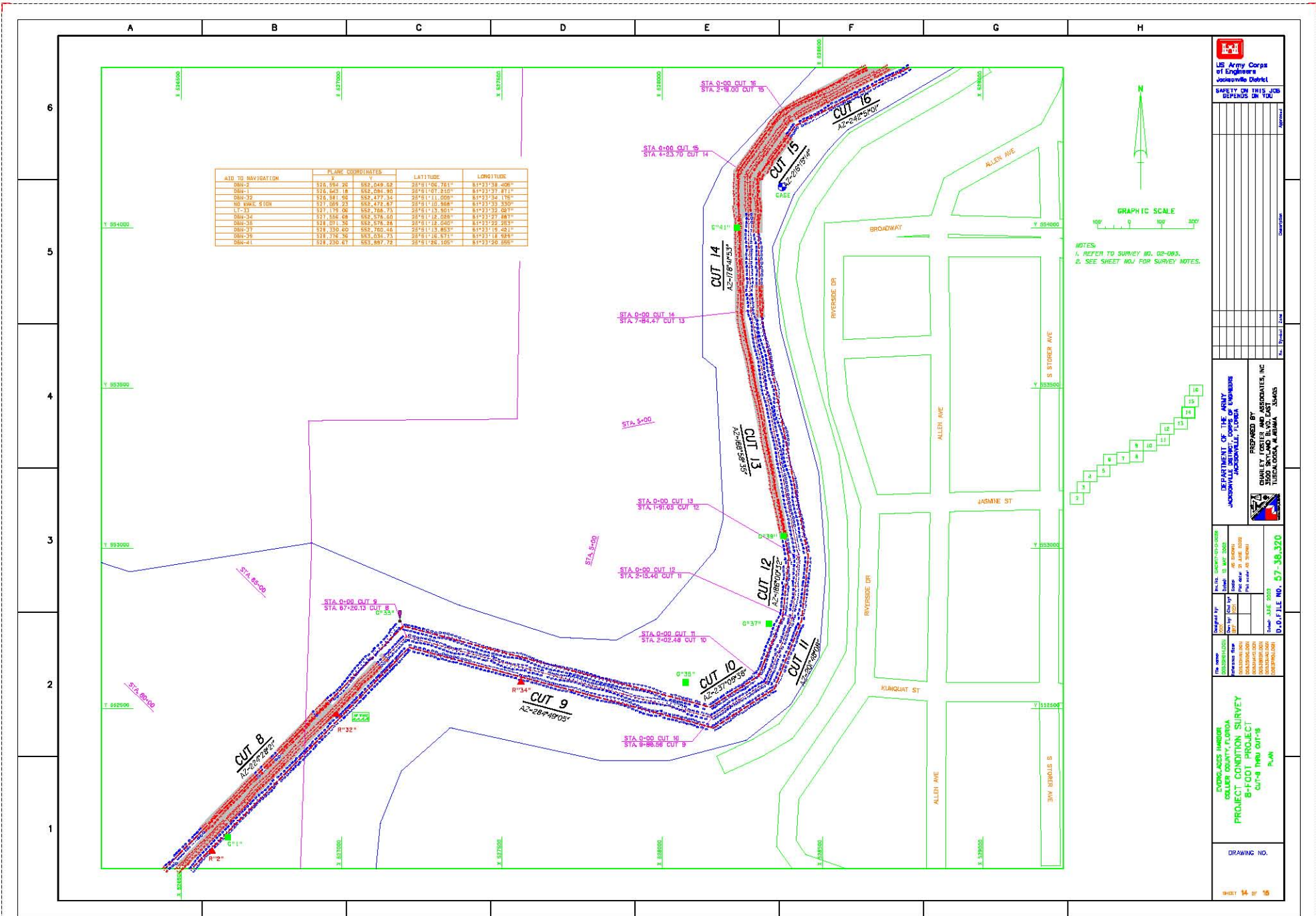


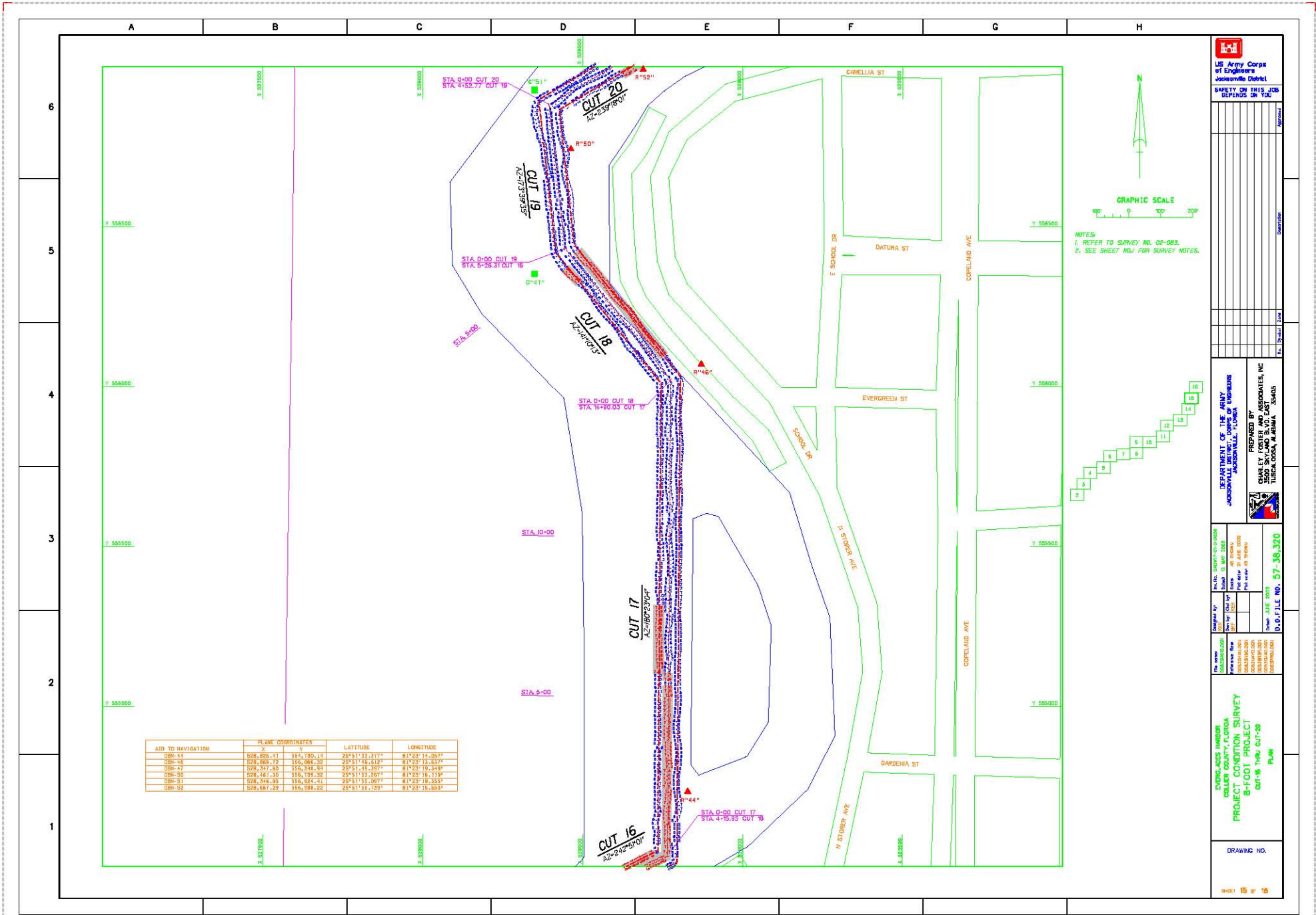

 US Army Corps
 of Engineers
 Jacksonville District
**SAFETY ON THIS JOB
 DEPENDS ON YOU**

DEPARTMENT OF THE ARMY
 JACKSONVILLE DISTRICT, CORPS OF ENGINEERS
 JACKSONVILLE, FLORIDA
 PREPARED BY
 CRANLEY CENTER AND ASSOCIATES, INC.
 TULSA, OKLAHOMA
 TULSA, OKLAHOMA

EVERGLADES HARBOR
 COLLIER COUNTY, FLORIDA
 PROJECT: CONDITION SURVEY
 8-FOOT PROJECT
 CUT#8
 PLAN
 DRAWING NO.

SHEET 13 OF 16
 D.C. FILE NO. 57-38.370





AID TO NAVIGATION	PLANK COORDINATES		LATITUDE	LONGITUDE
	X	Y		
DBM-44	529,825.41	551,130.14	25°51'33.317"	81°23'14.087"
DBM-46	529,868.72	550,969.32	25°51'48.512"	81°23'14.837"
DBM-47	529,347.80	556,348.94	25°51'18.387"	81°23'19.348"
DBM-50	529,451.30	556,159.32	25°51'13.167"	81°23'19.118"
DBM-51	528,346.35	556,324.41	25°51'15.281"	81°23'18.355"
DBM-52	529,687.29	556,188.22	25°51'15.789"	81°23'15.853"


 US Army Corps of Engineers
 Jacksonville District
SAFETY ON THIS JOB DEPENDS ON YOU

DEPARTMENT OF THE ARMY
 JACKSONVILLE DISTRICT, CORPS OF ENGINEERS
 JACKSONVILLE, FLORIDA
 PREPARED BY
 CRANLEY CENTER AND ASSOCIATES, INC.
 TULSA, OKLAHOMA
 TULSA, OKLAHOMA, U.S.A.

DRAWN BY: W. J. GIBSON CHECKED BY: W. J. GIBSON DATE: 06/11/02	DESIGNED BY: W. J. GIBSON DATE: 06/11/02	PROJECT NO.: 67-38-370 SHEET NO.: 15 OF 16
---	---	--

EVERGLADES HARBOR
 COLLIER COUNTY, FLORIDA
 PROJECT: CONDITION SURVEY
 8-FOOT PROJECT
 CUT 18 thru CUT 20
 PLAN

DRAWINGS NO.
 SHEET 15 OF 16

