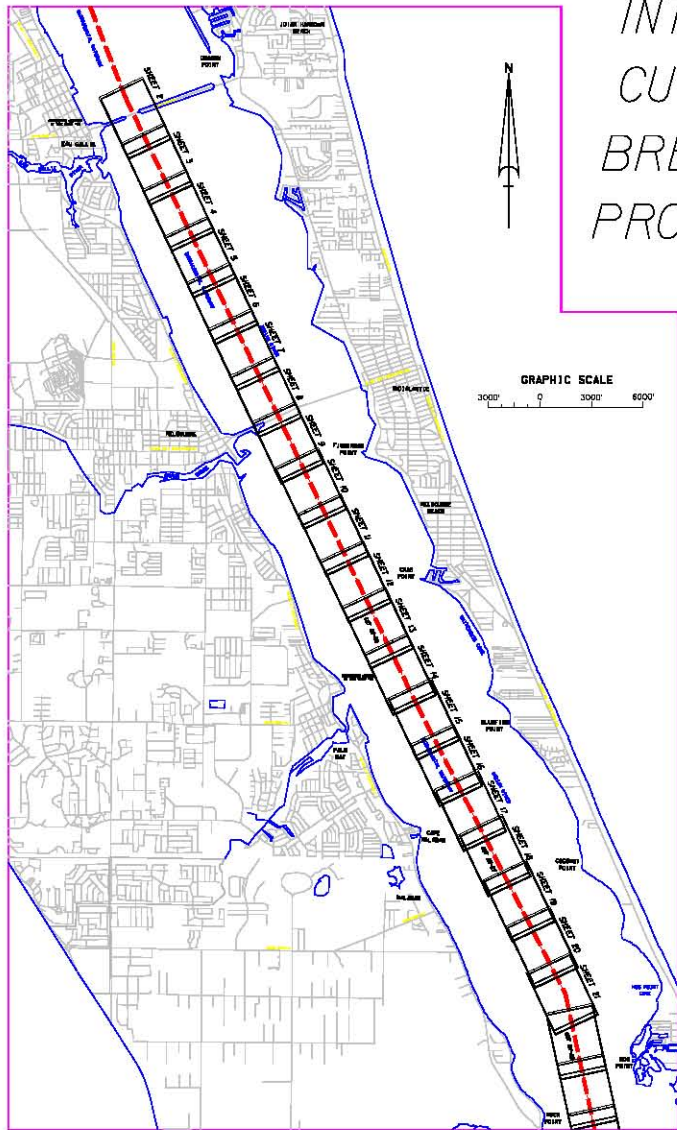


INTRACOASTAL WATERWAY CUTS BV-26 THRU BV-28 BREVARD COUNTY, FLORIDA PROJECT CONDITION SURVEY



SURVEY NOTES:

- REFER TO SURVEY NO. 00-219.
- ELEVATIONS ARE IN FEET AND TENTHS AND REFER TO MEAN LOW WATER (MLW) WHICH IS 0.2 FEET BELOW NGVD 1929.
- ALL ELEVATIONS ARE BELOW THE CHART DATUM UNLESS PRECEDED BY A (+) SIGN.
- TIDAL REDUCTIONS WERE MADE FROM A STAFF SET ON A WOODEN PILING APPROX. 100' SOUTHEAST OF AND REFERENCED FROM BENCHMARK "COLLEGE-2" AND FROM A STAFF SET ON A WOODEN PILING IN THE VICINITY OF AND REFERENCED FROM BENCHMARK "BV-231".
- PLANE COORDINATES ARE BASED ON THE TRANSVERSE MERCATOR PROJECTION FOR THE EAST ZONE OF FLORIDA AND REFERENCED TO NORTH AMERICAN DATUM OF 1927 (NAD27).
- ALL AZIMUTHS ARE GRID; RECKONED CLOCKWISE FROM SOUTH.
- ALL STATIONING REFERS TO THE CENTERLINE OF THE CHANNEL.
- SURVEY WAS PERFORMED USING DIFFERENTIAL GPS FOR POSITIONING AND UTILIZING THE USCG NAVBEACON SYSTEM AS THE REFERENCE SITE. VERTICAL MEASUREMENTS WERE MADE USING A ROSS SMART SOUNDER DEPTH RECORDER WITH A 200KHZ (HIGH FREQUENCY) TRANSDUCER.

VESSEL	DATE OF SURVEY	CUT
WB-34	8-9 & 21-22 AUG 2000	BV-26 THRU BV-28

- AIDS TO NAVIGATION WERE LOCATED DURING THIS SURVEY.
- THE INFORMATION DEPICTED ON THIS MAP REPRESENTS THE RESULTS OF SURVEYS MADE ON THE DATES INDICATED ABOVE AND CAN ONLY BE CONSIDERED AS INDICATING THE GENERAL CONDITIONS AT THAT TIME.
- SURVEY QUALITY CONTROL STANDARDS AND FIELD EQUIPMENT CALIBRATIONS WERE FOLLOWED DURING THIS SURVEY IN ACCORDANCE WITH EM 110-2-1003 FOR CLASS 1 HYDROGRAPHIC SURVEYS.

BENCHMARK	NGVD ELEV. (FT)
COLLEGE-2	2.7821
BV-231	28.520



LEGEND	
+BM	BENCHMARK
⊥	LIGHTED BEACON
⊞	GREEN DAYBEACON
▲	RED DAYBEACON
⊞	RED LIGHTED BUOY
⊞	GREEN LIGHTED BUOY
⊞	CAN BUOY
⊞	TANK BUOY
⊞	TIDE STAFF

US Army Corps of Engineers
Jacksonville District

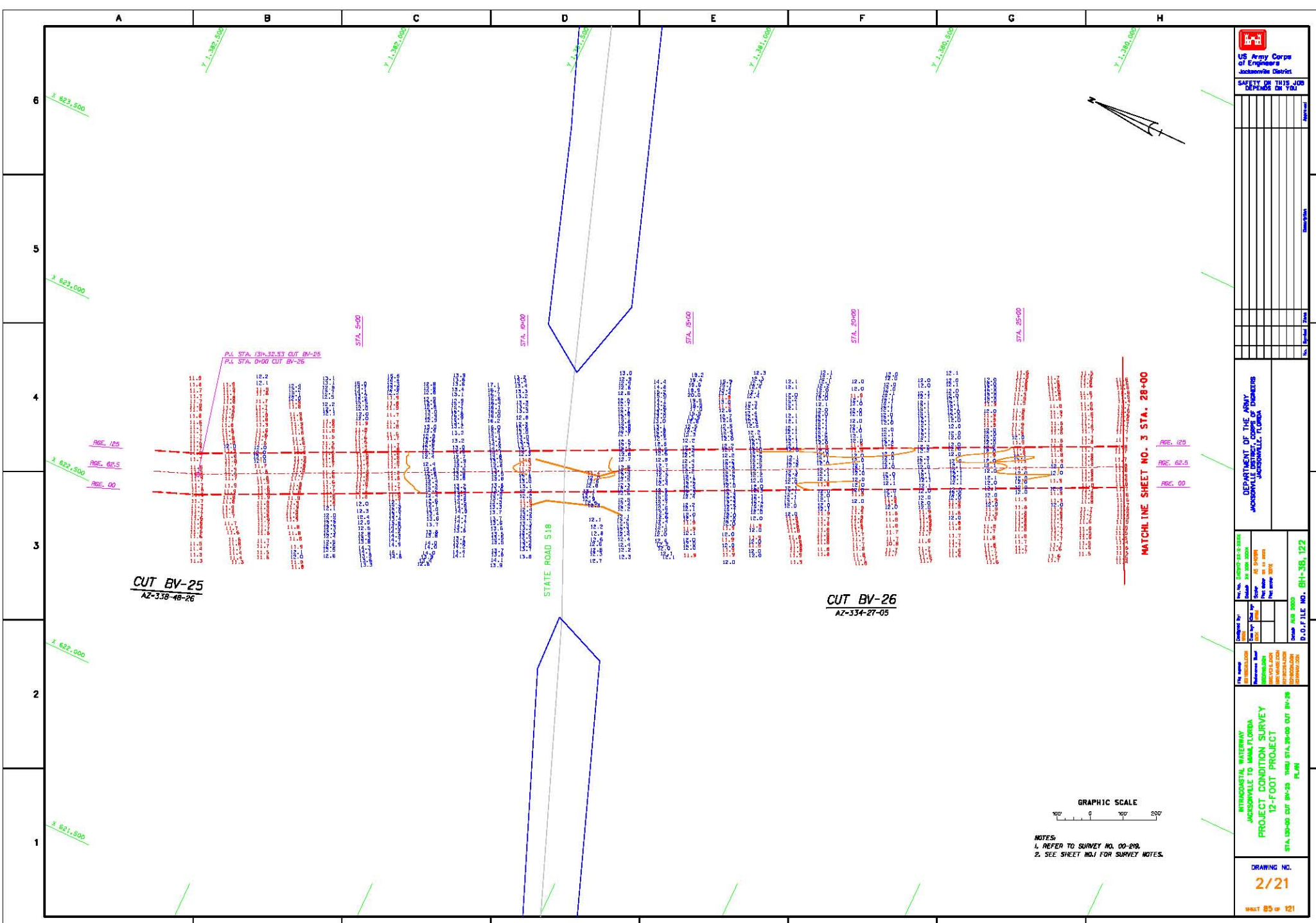
SAFETY IN THIS JOB DEPENDS ON YOU

DEPARTMENT OF THE ARMY
JACKSONVILLE DISTRICT OF DISTRICTS
JACKSONVILLE, FLORIDA

PROJECT: INTRACOASTAL WATERWAY JACKSONVILLE TO WALKER FLORIDA PROJECT CONDITION SURVEY 12-FOOT PROJECT COVER, LOCATION AND MARK PLAN

DRAWING NO. 1/21

SHEET 1 OF 121



REVISIONS

No.	Description	Date

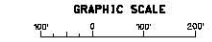
DEPARTMENT OF THE ARMY
JACKSONVILLE DISTRICT
JACKSONVILLE, FLORIDA

PROJECT INFORMATION

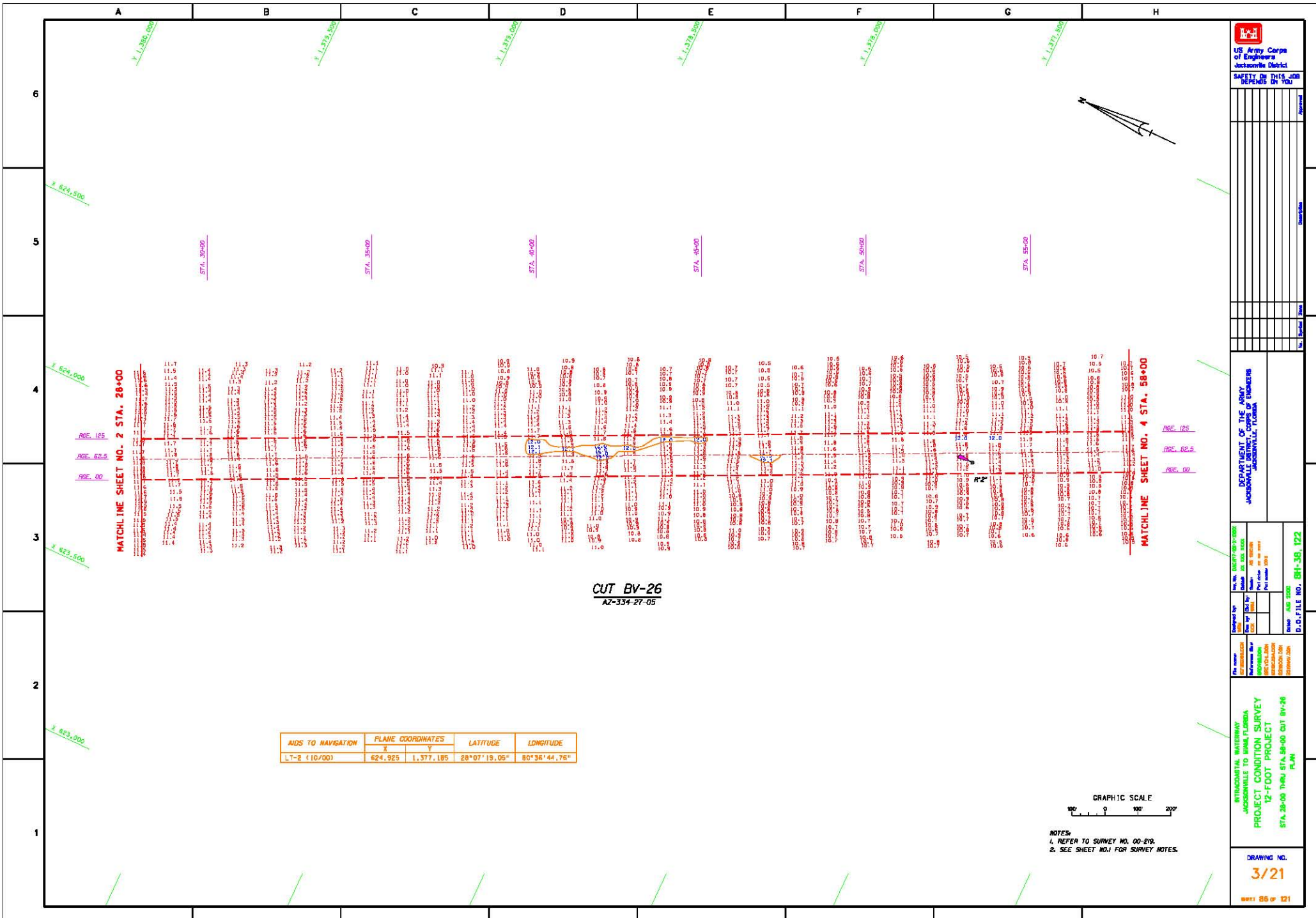
Project No.	12-0000
Contract No.	
Order No.	
Design No.	
Drawn By	
Checked By	
Date	

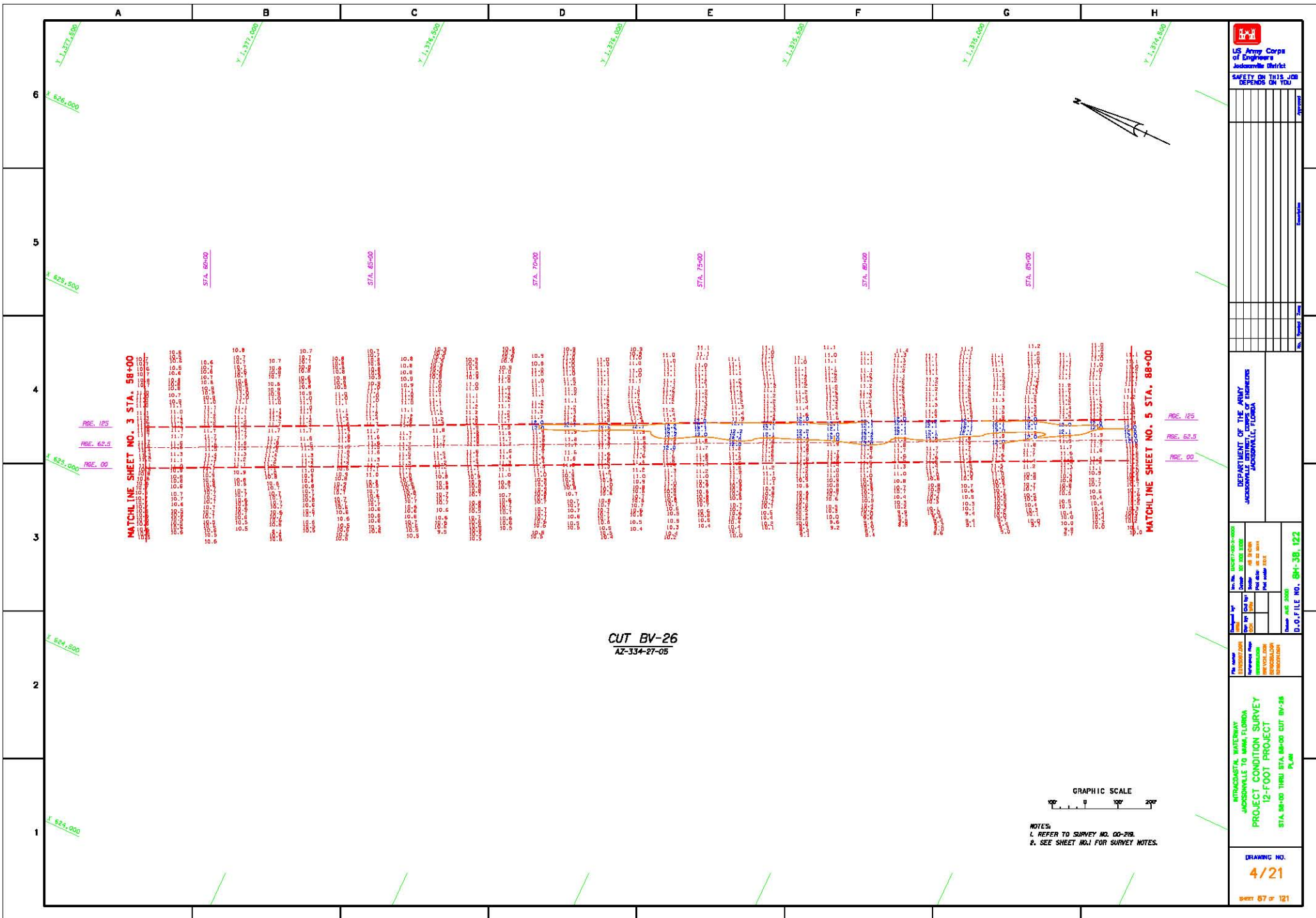
INTERSTATE HIGHWAY
JACKSONVILLE TO WALKER FLORIDA
PROJECT CONDITION SURVEY
12-FOOT PROJECT
STA 12+00 CUT BV-25 thru STA 29+00 CUT BV-26
PLAN

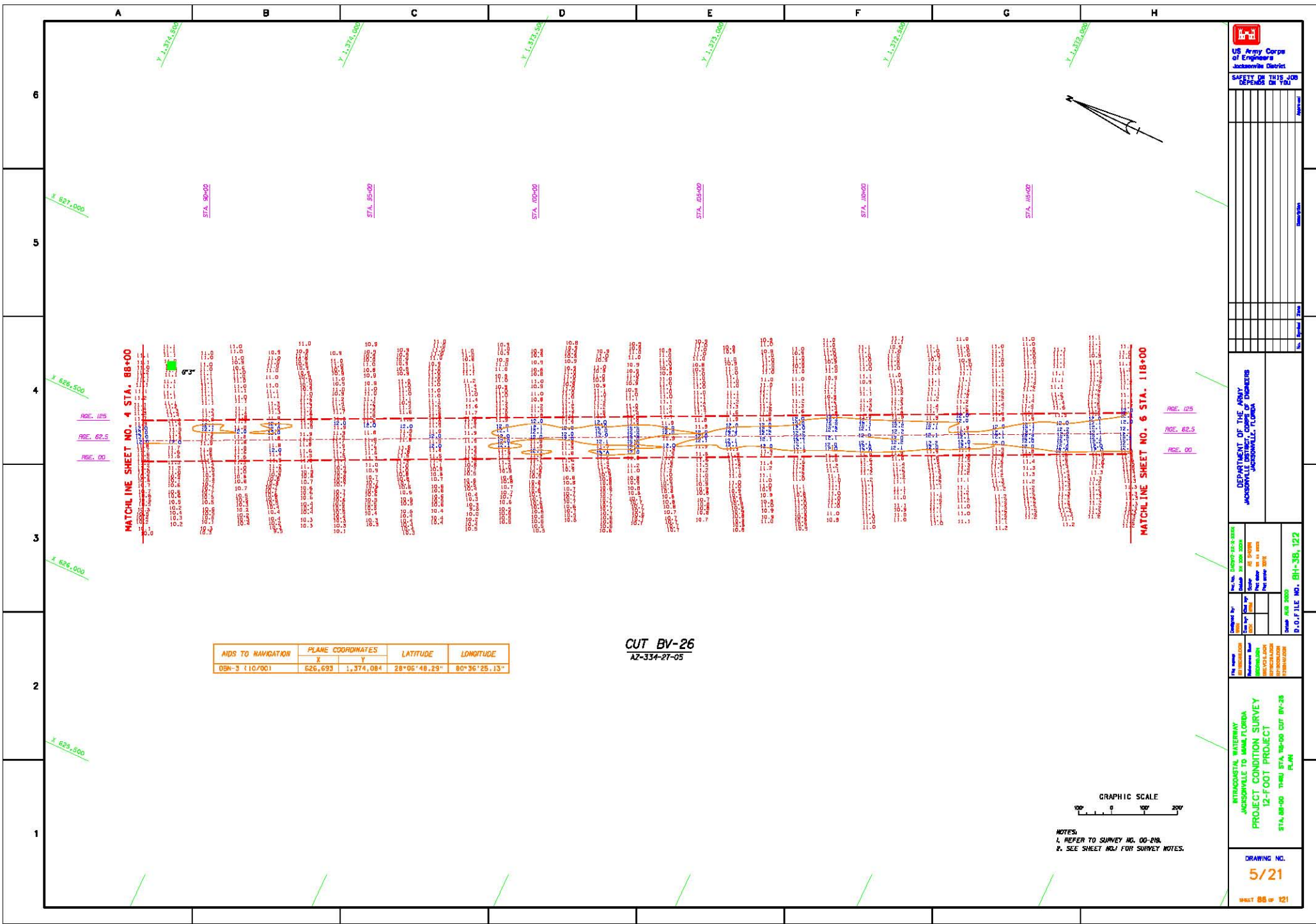
DRAWING NO.
2/21
SHEET 85 OF 121



NOTES:
1. REFER TO SURVEY NO. 00-219.
2. SEE SHEET 84I FOR SURVEY NOTES.

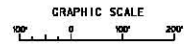






AIDS TO NAVIGATION	PLANE COORDINATES		LATITUDE	LONGITUDE
	X	Y		
DBN-3 1107001	626,693	1,374,084	28°05'48.29"	80°36'25.13"

CUT BV-26
AZ-334-27-05



NOTES:
1. REFER TO SURVEY NO. 00-218.
2. SEE SHEET NO. 1 FOR SURVEY NOTES.



DATE	BY	CHKD	APP'D

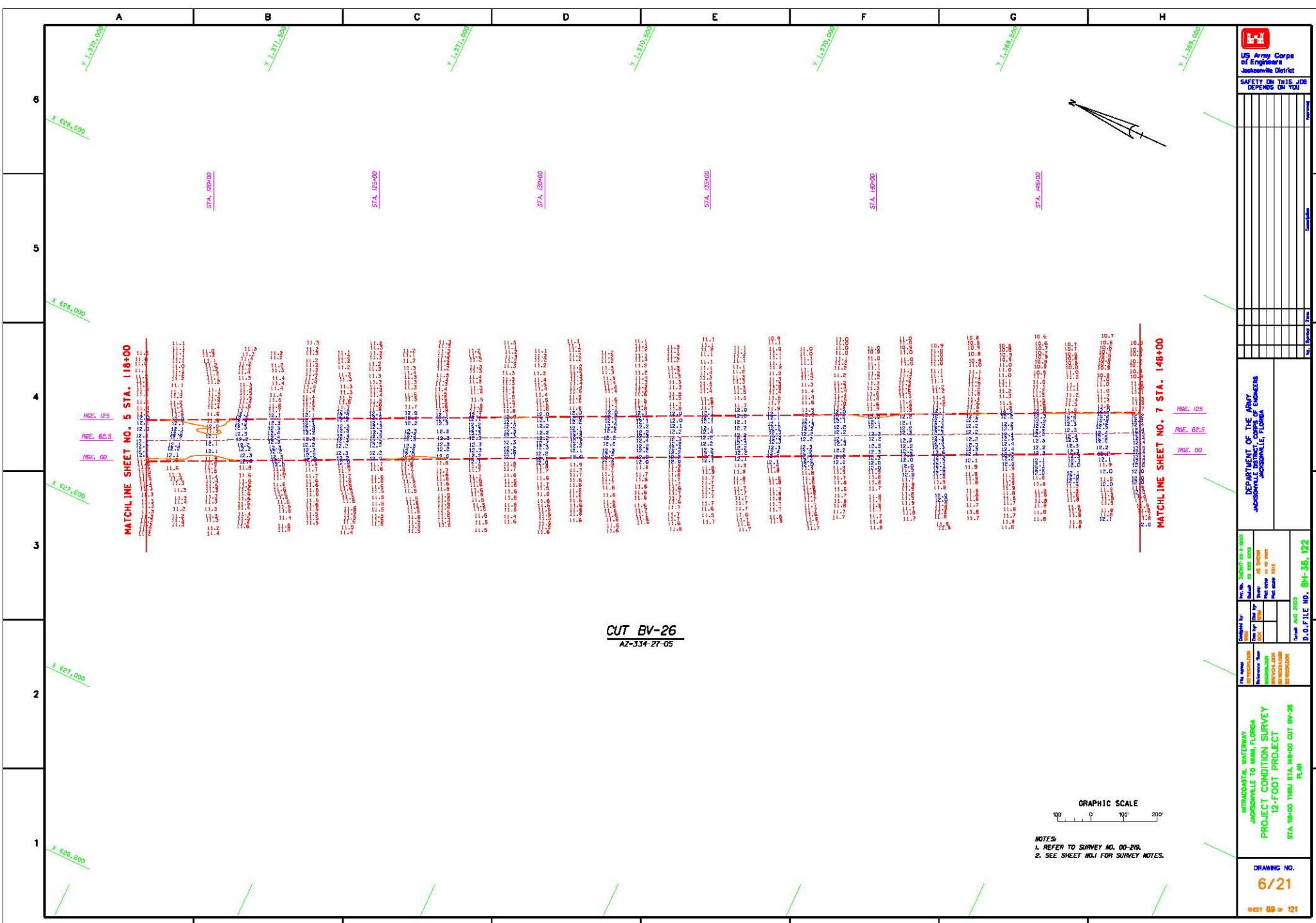
DEPARTMENT OF THE ARMY
JACKSONVILLE DISTRICT
JACKSONVILLE, FLORIDA

PROJECT NO.	00-218-001
PROJECT NAME	
DATE	
SCALE	
DISTRICT FILE NO.	BH-3B, 122

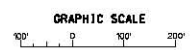
PROJECT NO. 00-218-001
PROJECT NAME
DATE
SCALE

INTRASTATE HIGHWAY
JACKSONVILLE TO WALKER FLORIDA
PROJECT CONDITION SURVEY
12-FOOT PROJECT
STA. 88+00 THRU STA. 118+00 CUT BV-26
PLAN

DRAWING NO.
5/21
SHEET 88 OF 121

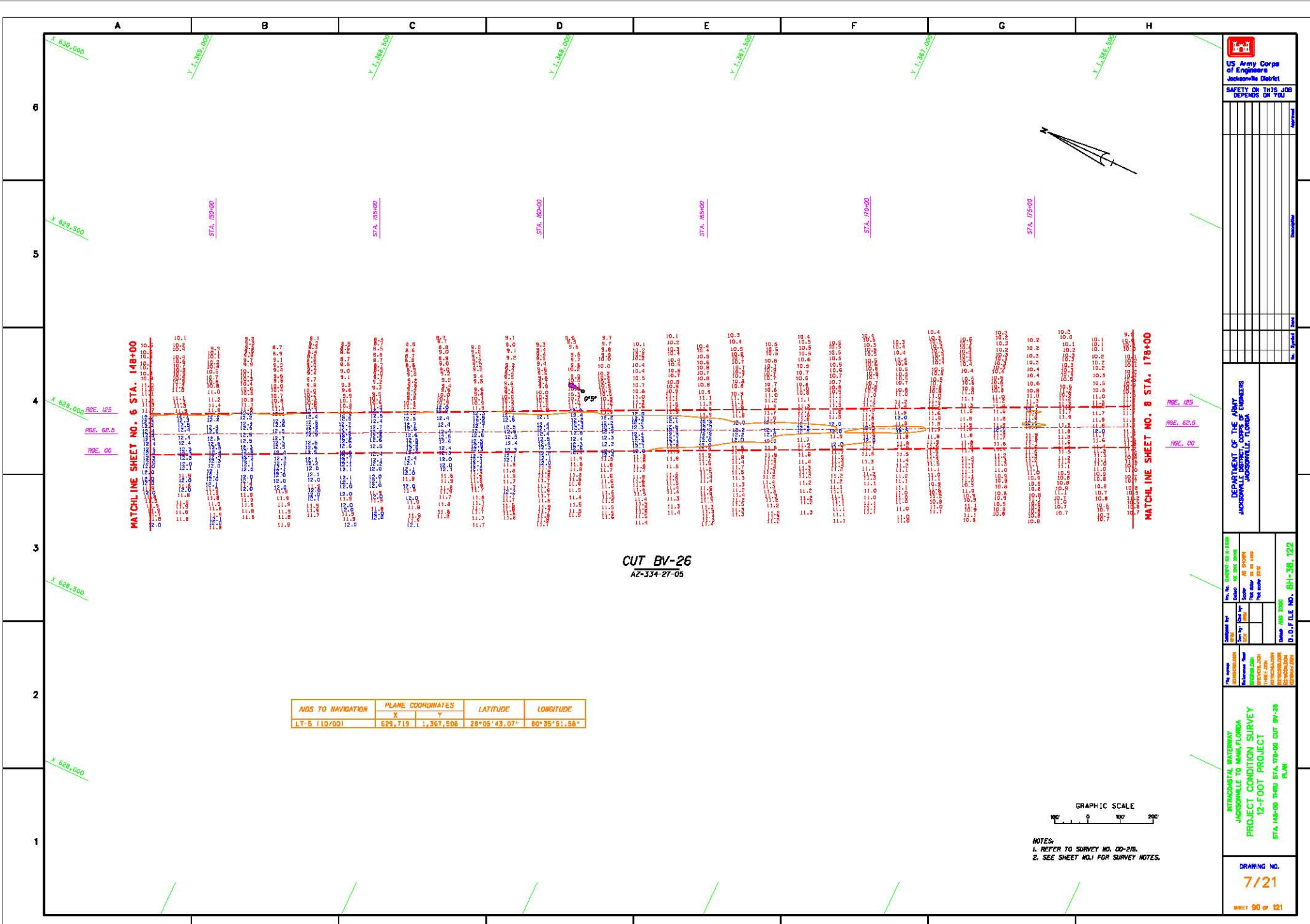


CUT BV-26
AZ-334-27-05



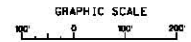
NOTES
1. REFER TO SURVEY NO. 00-219.
2. SEE SHEET NO. 1 FOR SURVEY NOTES.

<p>US Army Corps of Engineers Jacksonville District SAFETY ON THIS JOB DEPENDS ON YOU</p>	
<p>DEPARTMENT OF THE ARMY JACKSONVILLE DISTRICT, CORPS OF ENGINEERS JACKSONVILLE, FLORIDA</p>	
<p>Checked by: [Signature] Date: 05/03/05</p>	<p>Drawn by: [Signature] Date: 05/03/05</p>
<p>Reviewed by: [Signature] Date: 05/03/05</p>	<p>Checked by: [Signature] Date: 05/03/05</p>
<p>INTRAGOV'T. WATERWAY JACKSONVILLE TO MIAMI, FLORIDA PROJECT CONDITION SURVEY 12-FOOT PROJECT STA 118+00 THRU STA 148+00 CUT BV-26 PLAN</p>	
<p>D.O. FILE NO. BH-36, 122</p>	
<p>DRAWING NO. 6/21</p>	
<p>SHEET 88 OF 121</p>	



CUT BY-26
AZ-334-27-05

AIDS TO NAVIGATION	PLANE COORDINATES		LATITUDE	LONGITUDE
	X	Y		
LT-5 (110/00)	629,719	1,367,508	28°05'43.07"	80°35'51.68"



NOTES:
1. REFER TO SURVEY NO. 00-215.
2. SEE SHEET NO. 1 FOR SURVEY NOTES.

MATCHLINE SHEET NO. 6 STA. 148+00

MATCHLINE SHEET NO. 8 STA. 178+00

6
5
4
3
2
1

A B C D E F G H

X 630,000
Y 1,380,000
X 629,500
Y 1,380,000
X 629,000
Y 1,380,000
X 628,500
Y 1,380,000
X 628,000
Y 1,380,000
X 627,500
Y 1,380,000
X 627,000
Y 1,380,000
X 626,500
Y 1,380,000
X 626,000
Y 1,380,000

STA. 150+00

STA. 155+00

STA. 160+00

STA. 165+00

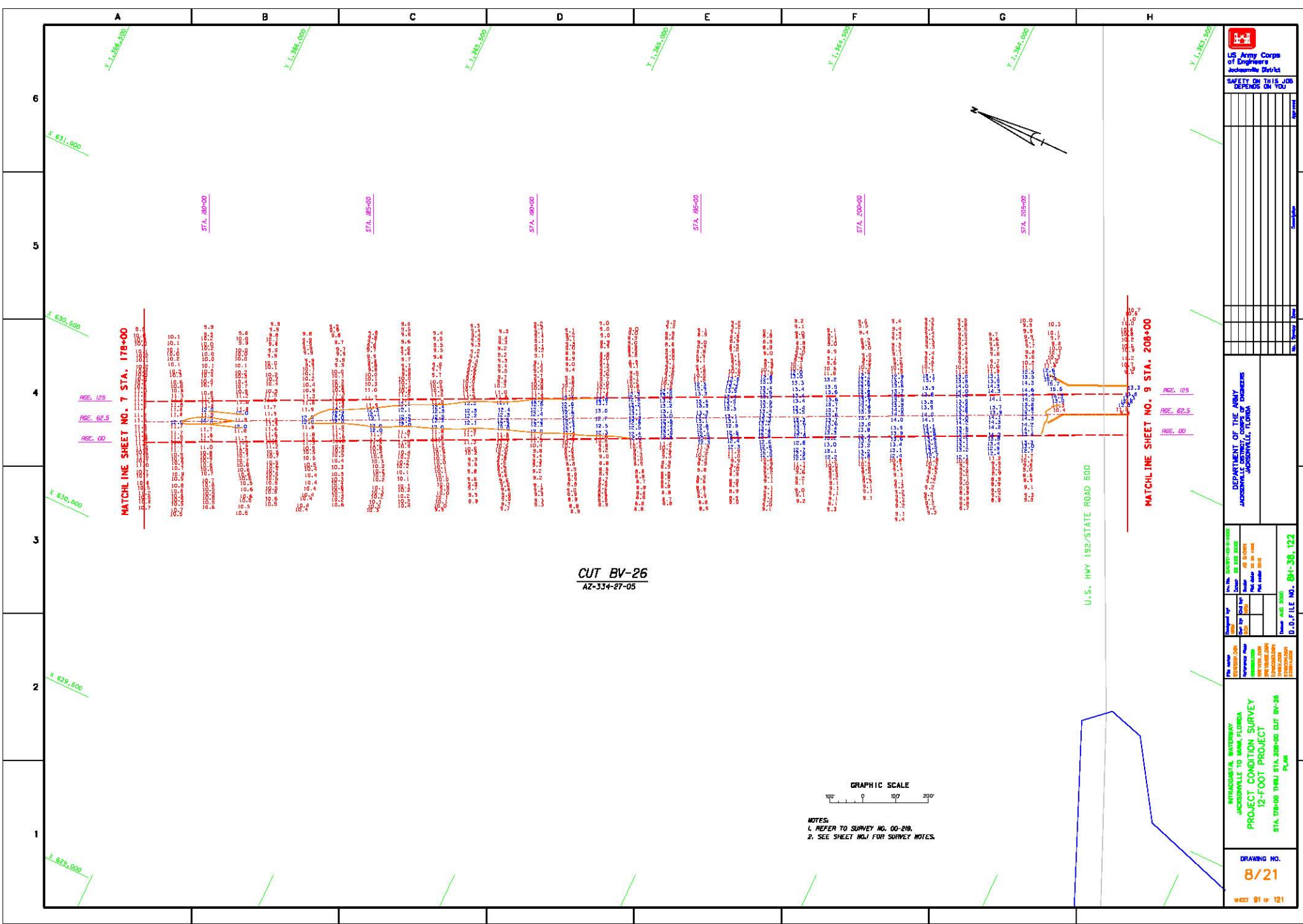
STA. 170+00

STA. 175+00

RSE. 60.5
RSE. 00

RSE. 125
RSE. 62.5
RSE. 00

DATE
SCALE
SHEET NO.
SHEET TOTAL



US Army Corps of Engineers
Jacksonville District

SAFETY ON THIS JOB DEPENDS ON YOU

DEPARTMENT OF THE ARMY
JACKSONVILLE DISTRICT, CORPS OF ENGINEERS
JACKSONVILLE, FLORIDA

Project No.	00-208
Contract No.	334-87-05
Sheet No.	8/21
Date	01/04/01

INTRACOUNTY WATERWAY
JACKSONVILLE TO BAKA, FLORIDA
PROJECT CONDITION SURVEY
12-FOOT PROJECT
STA. 178+00 THRU STA. 208+00 CUT BV-26
PLAN

DRAWING NO.
8/21

Sheet 81 of 121



US Army Corps of Engineers
Jacksonville District

SAFETY IS THIS JOB
DEPENDS ON YOU

NO.	DATE	REVISION

DEPARTMENT OF THE ARMY
JACKSONVILLE DISTRICT
JACKSONVILLE, FLORIDA

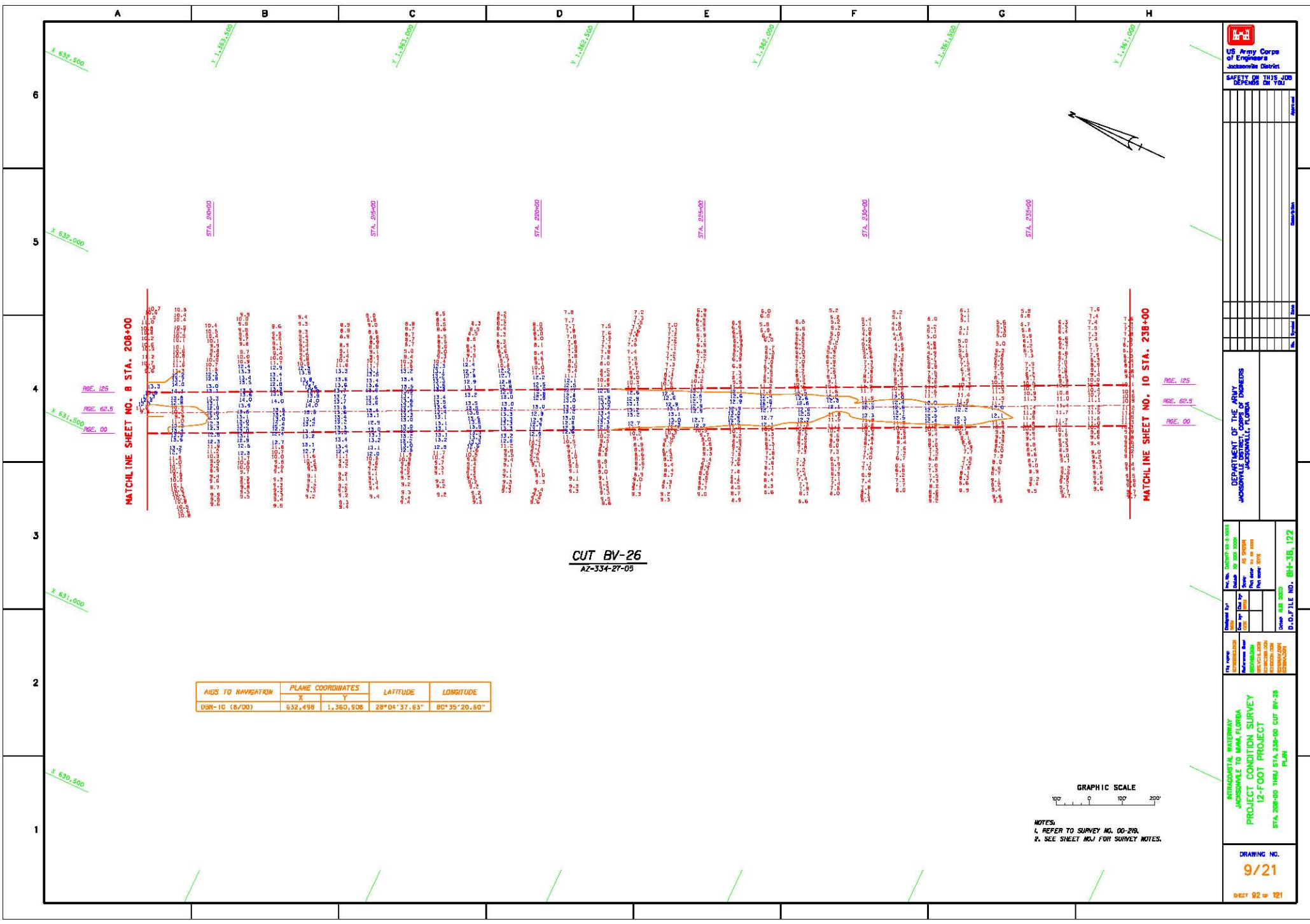
PROJECT CONDITION SURVEY
12-FOOT PROJECT
STA 208+00 THRU STA 238+00 CUT BV-26
PLAN

DRAWING NO.
9/21
SHEET 92 OF 121

DATE: 08/20/01
BY: [Signature]

DATE: 08/20/01
BY: [Signature]

DATE: 08/20/01
BY: [Signature]



MATCHLINE SHEET NO. B STA. 208+00

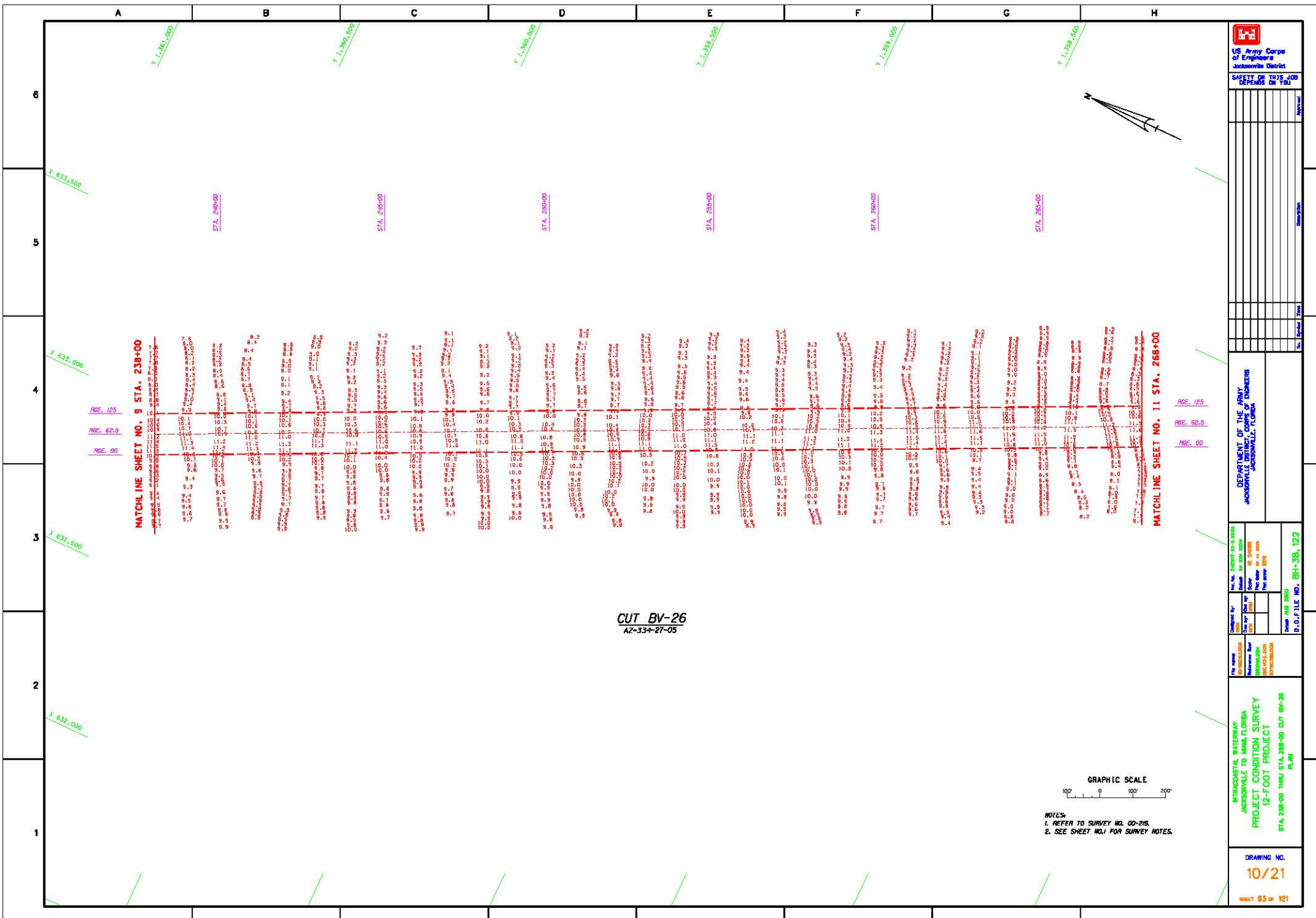
MATCHLINE SHEET NO. 10 STA. 238+00

CUT BV-26
AZ-334-27-05

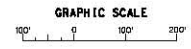
AIDS TO NAVIGATION	PLANE COORDINATES		LATITUDE	LONGITUDE
	X	Y		
DBN-10 (R/00)	632,498	1,360,508	28°04'37.63"	80°35'20.80"

GRAPHIC SCALE
100' 0 100 200'

NOTES:
1. REFER TO SURVEY NO. 00-216.
2. SEE SHEET NO. 9 FOR SURVEY NOTES.



CUT BV-26
AZ-334-27-05



NOTES:
1. REFER TO SURVEY NO. 00-291.
2. SEE SHEET NO.1 FOR SURVEY NOTES.

US Army Corps of Engineers
Jacksonville District

SAFETY IS THIS JOB'S TOP PRIORITY

DATE	BY	CHKD	APP'D

DEPARTMENT OF THE ARMY
JACKSONVILLE DISTRICT
JACKSONVILLE, FLORIDA

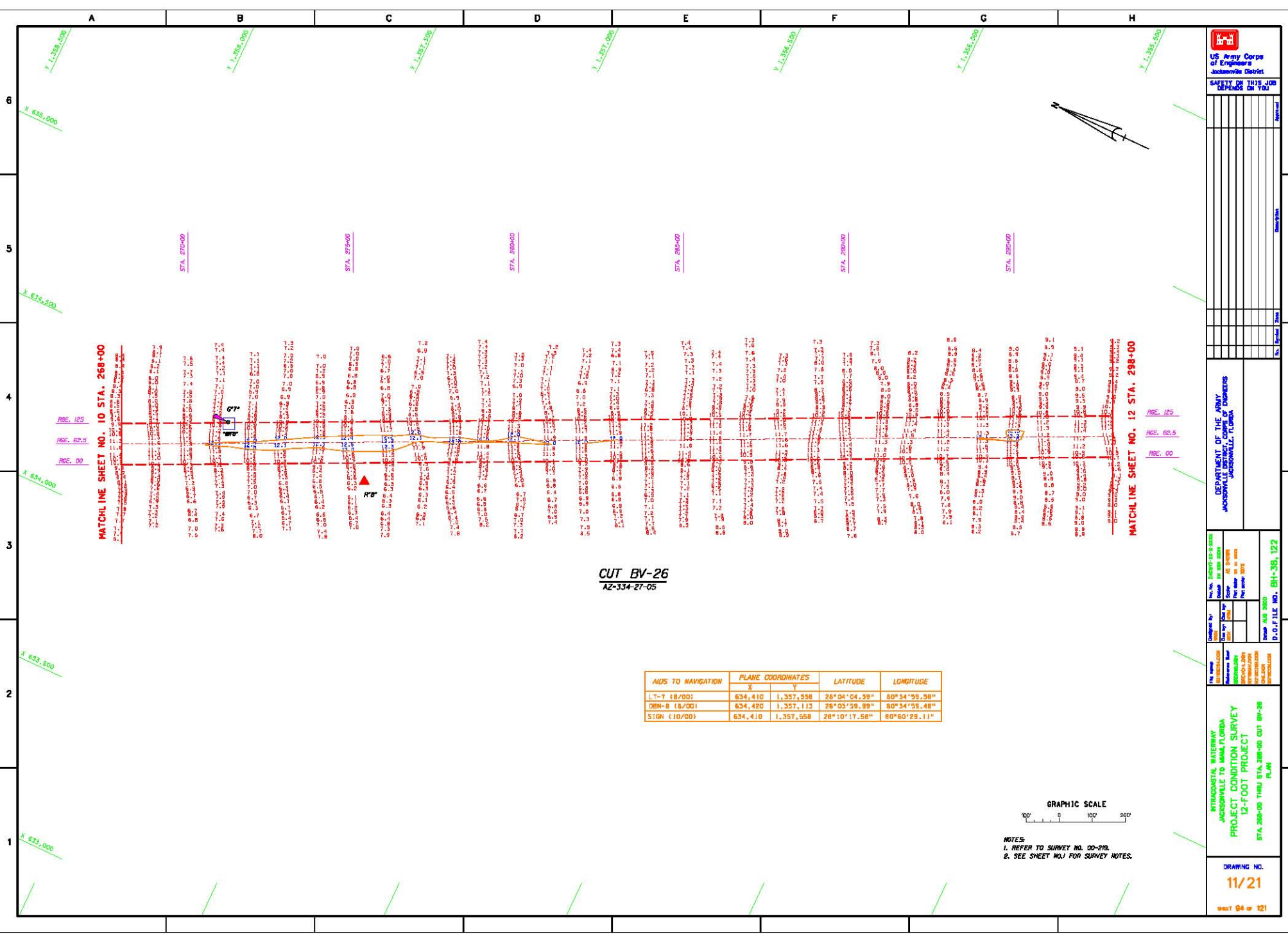
DESIGNED BY	DATE	SCALE
CHECKED BY	DATE	SCALE
APPROVED BY	DATE	SCALE

PROJECT CONDITION SURVEY
12-FOOT PROJECT

STA. 238+00 THRU STA. 268+00 CUT BV-26
PLAN

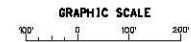
DRAWING NO.
10/21

SHEET 03 OF 121



CUT BV-26
AZ-334-27-05

AIDS TO NAVIGATION	PLANE COORDINATES		LATITUDE	LONGITUDE
	X	Y		
LT-7 (8/00)	634,410	1,357,558	28°04'04.59"	80°34'58.98"
DBN-8 (8/00)	634,420	1,357,113	28°03'59.89"	80°34'58.48"
STGN (10/00)	634,410	1,357,558	28°10'17.58"	80°50'29.11"



NOTES:
1. REFER TO SURVEY NO. 00-219.
2. SEE SHEET NO.1 FOR SURVEY NOTES.

US Army Corps of Engineers
Jacksonville District

SAFETY IS THIS JOB
DEPENDS ON YOU

DEPARTMENT OF THE ARMY
JACKSONVILLE DISTRICT OFFICE
JACKSONVILLE, FLORIDA

UTTERMOST CAUTION
JACKSONVILLE TO WALKER FLORIDA
PROJECT CONDITION SURVEY
12-FOOT PROJECT
STA. 288+00 THRU STA. 298+00 CUT BH-26
PLAN

DRAWING NO.
11/21
SHEET 04 OF 121

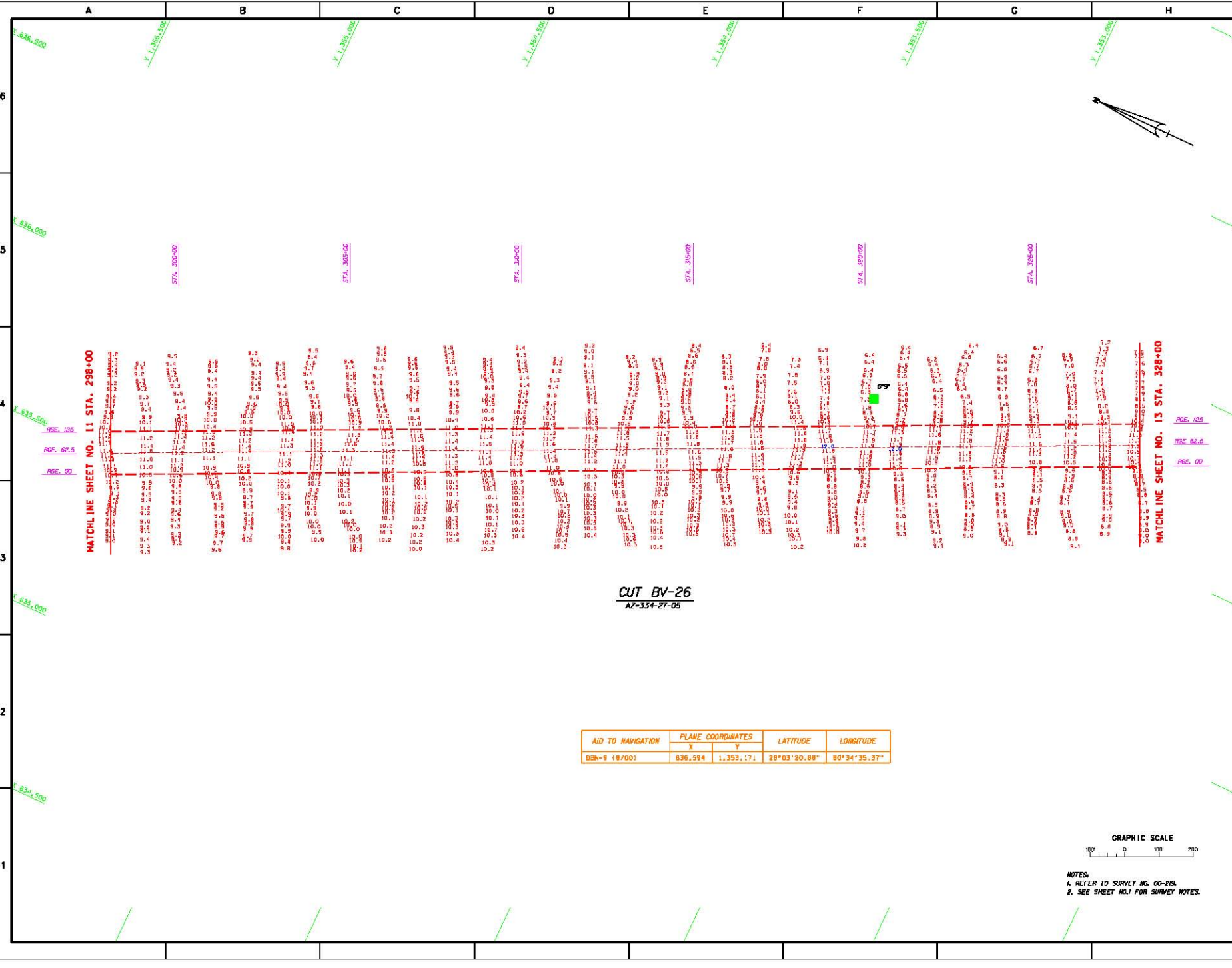


US Army Corps of Engineers Jacksonville District
SAFETY IS THIS JOB DEPENDS ON YOU

DEPARTMENT OF THE ARMY
JACKSONVILLE DISTRICT
JACKSONVILLE, FLORIDA

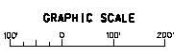
INTERAGENCY PARTNERSHIP
JACKSONVILLE TO PALM BEACH
PROJECT CONDITION SURVEY
12-FOOT PROJECT
STA. 298+00 THRU STA. 328+00 CUT BW-28 PLAN

DRAWING NO.
12/21
SHEET 85 OF 121



CUT BV-26
AZ-334-27-05

AID TO NAVIGATION	PLANE COORDINATES		LATITUDE	LONGITUDE
	X	Y		
BEN-9 (8700)	636,594	1,353,171	28°03'20.88"	80°34'35.37"



- NOTES:
1. REFER TO SURVEY NO. 00-216.
2. SEE SHEET NO. 1 FOR SURVEY NOTES.



SAFETY IS THIS JOB DEPENDS ON YOU

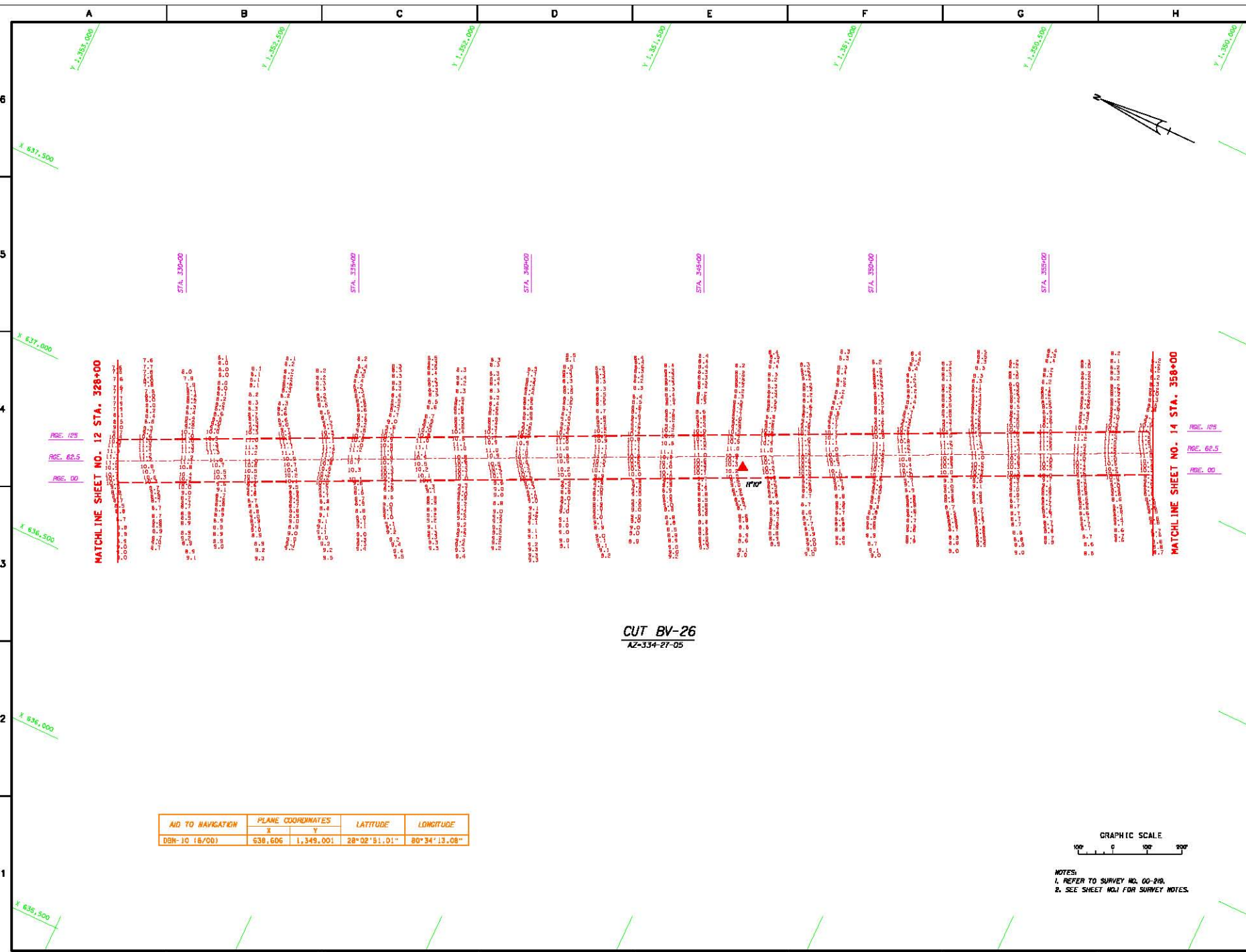
NO.	REVISION	DATE	BY	CHKD.

DEPARTMENT OF THE ARMY
JACKSONVILLE DISTRICT
WATERWAYS DIVISION

Contract No. DAH0293-99-3-0005
Task Order No. 1001
Task Order No. 1002
Task Order No. 1003
Task Order No. 1004
Task Order No. 1005
Task Order No. 1006
Task Order No. 1007
Task Order No. 1008
Task Order No. 1009
Task Order No. 1010
Task Order No. 1011
Task Order No. 1012
Task Order No. 1013
Task Order No. 1014
Task Order No. 1015
Task Order No. 1016
Task Order No. 1017
Task Order No. 1018
Task Order No. 1019
Task Order No. 1020
Task Order No. 1021
Task Order No. 1022
Task Order No. 1023
Task Order No. 1024
Task Order No. 1025
Task Order No. 1026
Task Order No. 1027
Task Order No. 1028
Task Order No. 1029
Task Order No. 1030
Task Order No. 1031
Task Order No. 1032
Task Order No. 1033
Task Order No. 1034
Task Order No. 1035
Task Order No. 1036
Task Order No. 1037
Task Order No. 1038
Task Order No. 1039
Task Order No. 1040
Task Order No. 1041
Task Order No. 1042
Task Order No. 1043
Task Order No. 1044
Task Order No. 1045
Task Order No. 1046
Task Order No. 1047
Task Order No. 1048
Task Order No. 1049
Task Order No. 1050
Task Order No. 1051
Task Order No. 1052
Task Order No. 1053
Task Order No. 1054
Task Order No. 1055
Task Order No. 1056
Task Order No. 1057
Task Order No. 1058
Task Order No. 1059
Task Order No. 1060
Task Order No. 1061
Task Order No. 1062
Task Order No. 1063
Task Order No. 1064
Task Order No. 1065
Task Order No. 1066
Task Order No. 1067
Task Order No. 1068
Task Order No. 1069
Task Order No. 1070
Task Order No. 1071
Task Order No. 1072
Task Order No. 1073
Task Order No. 1074
Task Order No. 1075
Task Order No. 1076
Task Order No. 1077
Task Order No. 1078
Task Order No. 1079
Task Order No. 1080
Task Order No. 1081
Task Order No. 1082
Task Order No. 1083
Task Order No. 1084
Task Order No. 1085
Task Order No. 1086
Task Order No. 1087
Task Order No. 1088
Task Order No. 1089
Task Order No. 1090
Task Order No. 1091
Task Order No. 1092
Task Order No. 1093
Task Order No. 1094
Task Order No. 1095
Task Order No. 1096
Task Order No. 1097
Task Order No. 1098
Task Order No. 1099
Task Order No. 1100
Task Order No. 1101
Task Order No. 1102
Task Order No. 1103
Task Order No. 1104
Task Order No. 1105
Task Order No. 1106
Task Order No. 1107
Task Order No. 1108
Task Order No. 1109
Task Order No. 1110
Task Order No. 1111
Task Order No. 1112
Task Order No. 1113
Task Order No. 1114
Task Order No. 1115
Task Order No. 1116
Task Order No. 1117
Task Order No. 1118
Task Order No. 1119
Task Order No. 1120
Task Order No. 1121
Task Order No. 1122
Task Order No. 1123
Task Order No. 1124
Task Order No. 1125
Task Order No. 1126
Task Order No. 1127
Task Order No. 1128
Task Order No. 1129
Task Order No. 1130
Task Order No. 1131
Task Order No. 1132
Task Order No. 1133
Task Order No. 1134
Task Order No. 1135
Task Order No. 1136
Task Order No. 1137
Task Order No. 1138
Task Order No. 1139
Task Order No. 1140
Task Order No. 1141
Task Order No. 1142
Task Order No. 1143
Task Order No. 1144
Task Order No. 1145
Task Order No. 1146
Task Order No. 1147
Task Order No. 1148
Task Order No. 1149
Task Order No. 1150
Task Order No. 1151
Task Order No. 1152
Task Order No. 1153
Task Order No. 1154
Task Order No. 1155
Task Order No. 1156
Task Order No. 1157
Task Order No. 1158
Task Order No. 1159
Task Order No. 1160
Task Order No. 1161
Task Order No. 1162
Task Order No. 1163
Task Order No. 1164
Task Order No. 1165
Task Order No. 1166
Task Order No. 1167
Task Order No. 1168
Task Order No. 1169
Task Order No. 1170
Task Order No. 1171
Task Order No. 1172
Task Order No. 1173
Task Order No. 1174
Task Order No. 1175
Task Order No. 1176
Task Order No. 1177
Task Order No. 1178
Task Order No. 1179
Task Order No. 1180
Task Order No. 1181
Task Order No. 1182
Task Order No. 1183
Task Order No. 1184
Task Order No. 1185
Task Order No. 1186
Task Order No. 1187
Task Order No. 1188
Task Order No. 1189
Task Order No. 1190
Task Order No. 1191
Task Order No. 1192
Task Order No. 1193
Task Order No. 1194
Task Order No. 1195
Task Order No. 1196
Task Order No. 1197
Task Order No. 1198
Task Order No. 1199
Task Order No. 1200

UNIVERSITY AIRWAY
JACKSONVILLE DISTRICT
PROJECT CONDITION SURVEY
12-FOOT PROJECT
STA. 328+00 THRU STA. 358+00 CUT BY-26
PLAN

DRAWING NO.
13/21
SHEET 08 OF 121



CUT BV-26
AZ-334-27-05

AID TO NAVIGATION	PLANE COORDINATES		LATITUDE	LONGITUDE
	X	Y		
DBN-10 18/001	638,606	1,349,001	28°02'51.01"	80°34'13.08"



NOTES:
1. REFER TO SURVEY NO. 00-218.
2. SEE SHEET NO.1 FOR SURVEY NOTES.



US Army Corps of Engineers
Incorporated District

SAFETY IS THIS JOB
DEPENDS ON YOU

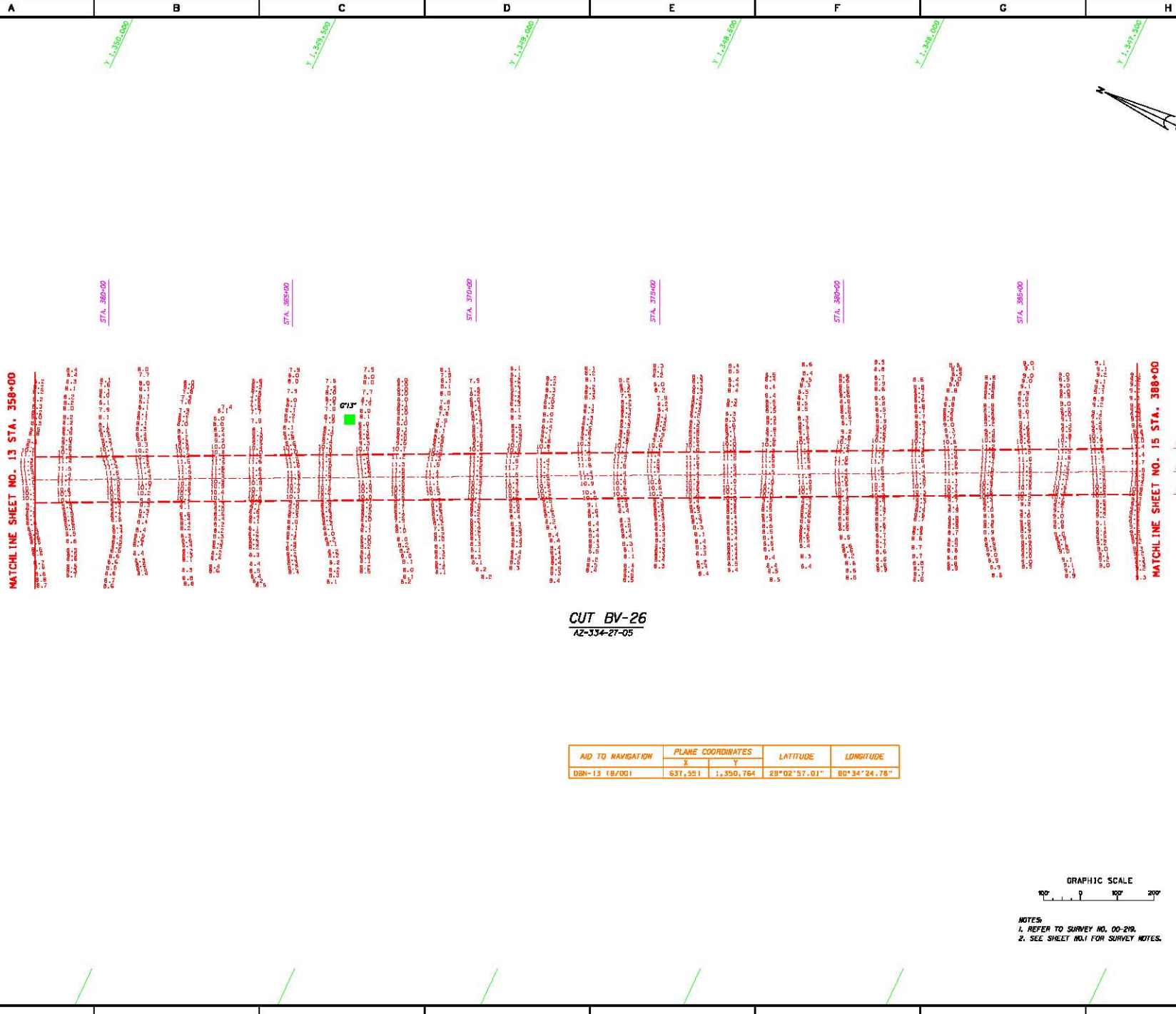
NO.	REVISION	DATE	BY	CHKD.

DEPARTMENT OF THE ARMY
WASHINGTON, D.C. 20315

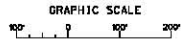
Project No.	DBN-13
Contract No.	
Task No.	
Order No.	
Revision No.	
Scale	
Sheet No.	14/21
DWG. FILE NO.	DBN-13B, 122

PREPARED BY: SURVEYING
PROJECT NO. DBN-13
PROJECT CONDITION SURVEY
12-FOOT PROJECT
STA. 358+00 THRU STA. 388+00 CUT BY-26
PLAN

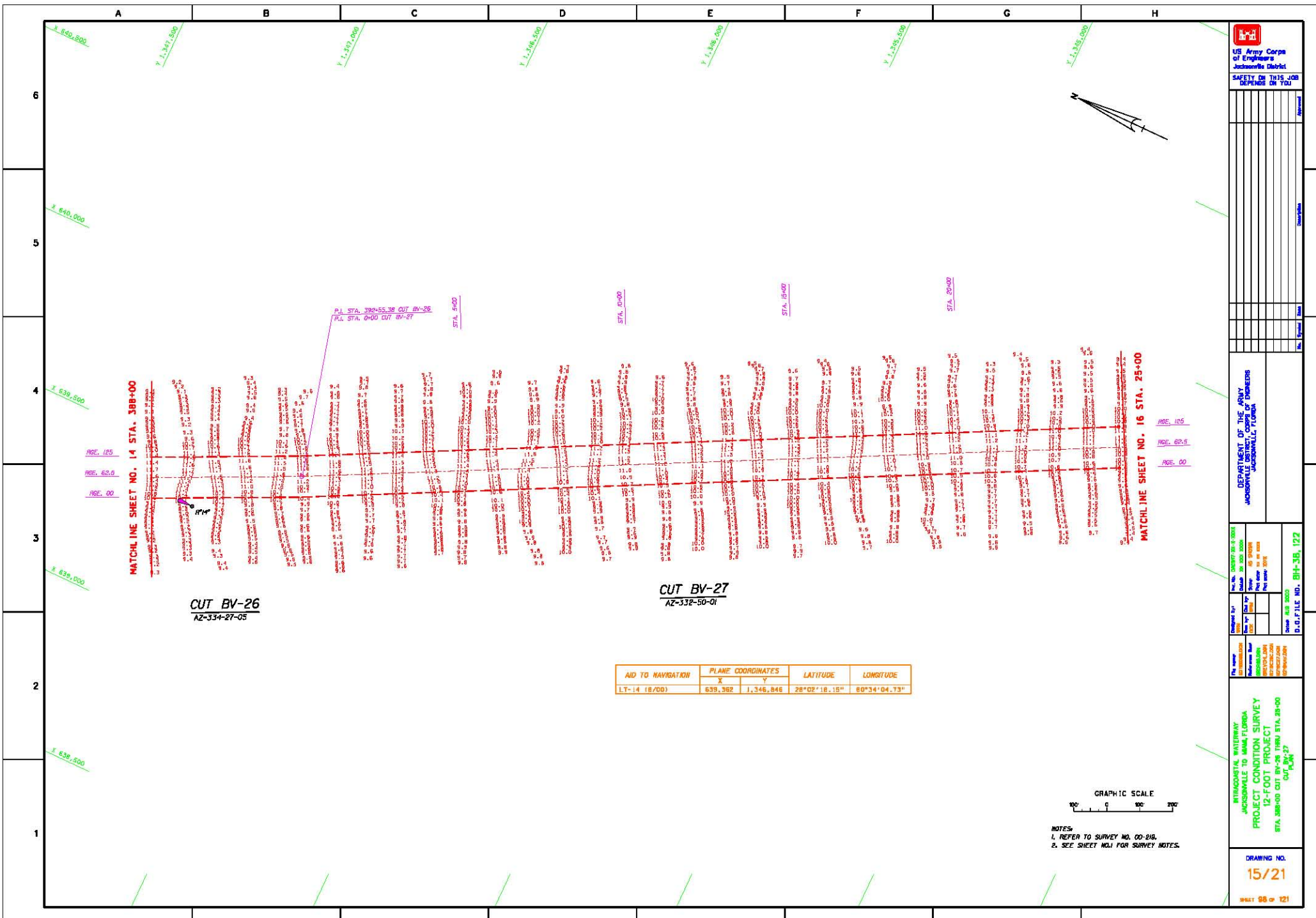
DRAWING NO.
14/21
SHEET 17 of 121



AID TO NAVIGATION	PLANE COORDINATES		LATITUDE	LONGITUDE
	X	Y		
DBN-13 (8/00)	631,551	1,350,764	28°02'57.01"	80°34'24.78"



NOTES
1. REFER TO SURVEY NO. 00-219.
2. SEE SHEET NO.1 FOR SURVEY NOTES.



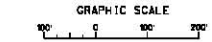
MATCHLINE SHEET NO. 14 STA. 388+00

CUT BV-26
AZ-334-27-05

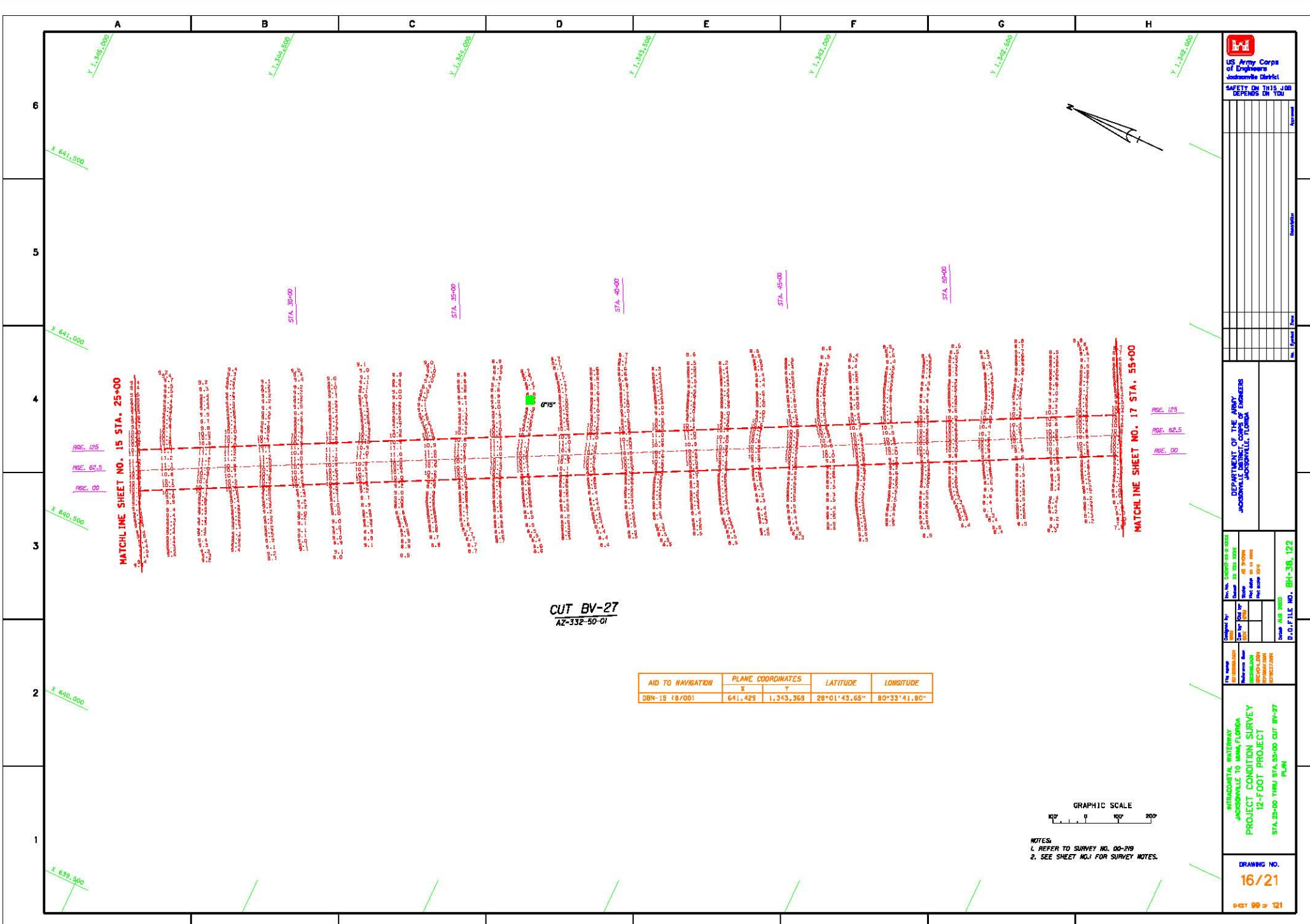
CUT BV-27
AZ-332-50-01

MATCHLINE SHEET NO. 16 STA. 25+00

AID TO NAVIGATION	PLANE COORDINATES		LATITUDE	LONGITUDE
	X	Y		
LT-14 (B/CO)	639,362	1,346,846	28°02'18.18"	80°34'04.73"

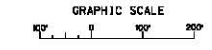


NOTES:
1. REFER TO SURVEY NO. 00-216.
2. SEE SHEET NO. 1 FOR SURVEY NOTES.



CUT BV-27
AZ-332-50-01

AID TO NAVIGATION	PLANE COORDINATES		LATITUDE	LONGITUDE
	X	Y		
DBN-15 (8700)	641,429	1,343,369	26°01'43.69"	80°33'41.80"



NOTES:
1. REFER TO SURVEY NO. 00-919
2. SEE SHEET NO.1 FOR SURVEY NOTES.



SAFETY: DO THIS JOB DEFENSIVE, DE YOU

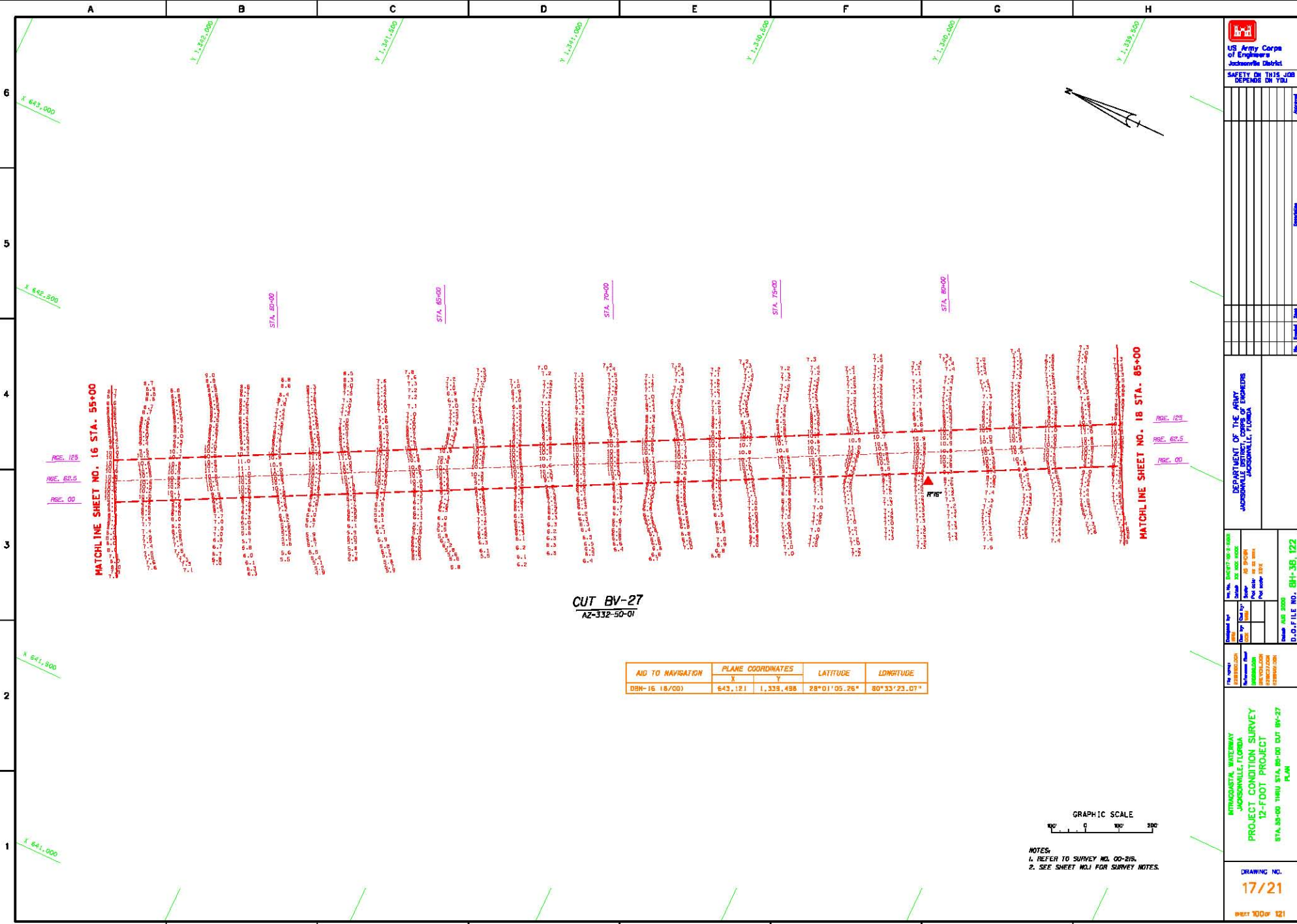
DATE	BY	DESCRIPTION

DEPARTMENT OF THE ARMY
JACKSONVILLE DISTRICT
JACKSONVILLE, FLORIDA

Checked by: *[Signature]*
Date: 01/04/01
Drawn by: *[Signature]*
Date: 01/04/01
Title: 16/21
Project: 00-919
Scale: AS SHOWN
Sheet: 16 of 21
D.C.F. FILE NO. BH-38, 122

UTAH STATE HIGHWAY
JACKSONVILLE TO MIAMI, FLORIDA
PROJECT CONDITION SURVEY
12-FOOT PROJECT
STA. 25+00 THRU STA. 55+00 CUT BV-27
PLAN

DRAWING NO.
16/21
9 OCT 99 OF 121



US Army Corps of Engineers
 Jacksonville District

SAFETY ON THIS JOB DEPENDS ON YOU

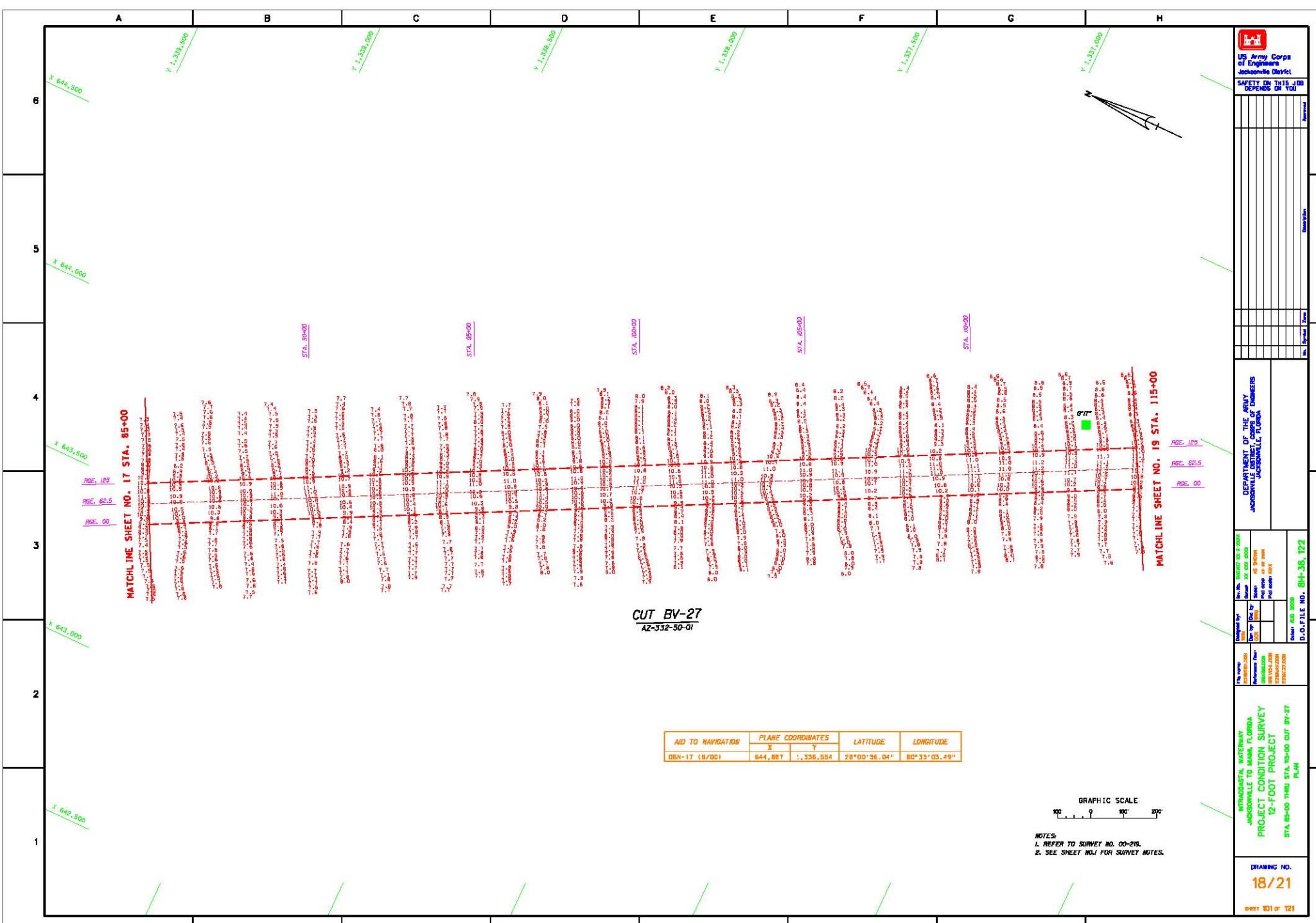
DEPARTMENT OF THE ARMY
 JACKSONVILLE DISTRICT OF ENGINEERS
 JACKSONVILLE, FLORIDA

PROJECT NO. 2000-332-50
DATE 08/28/00
DESIGNER [Name]
CHECKED [Name]
DATE 09/05/00

PROJECT CONDITION SURVEY
 12-FOOT PROJECT
 STA. 55+00 THRU STA. 85+00 CUT BV-27
PLAN

DRAWING NO.
17/21
 SHEET 100 OF 121

AID TO NAVIGATION	PLANE COORDINATES		LATITUDE	LONGITUDE
	X	Y		
DBN-16 (B/GD)	643.121	1,335.498	28°01'05.26"	80°53'23.07"



DEPARTMENT OF THE ARMY
JACKSONVILLE DISTRICT
JACKSONVILLE, FLORIDA

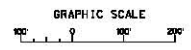
Drawn by: BRN	Checked by: BRN
Date: 01/04/01	Date: 01/04/01
Scale: AS SHOWN	Scale: AS SHOWN
Sheet: 18/21	Project: 12-FOOT PROJECT
Drawn by: BRN	Checked by: BRN
Date: 01/04/01	Date: 01/04/01
Scale: AS SHOWN	Scale: AS SHOWN
Sheet: 18/21	Project: 12-FOOT PROJECT

UTAH AVENUE, HIGHWAY
JACKSONVILLE TO MARLBOROUGH, FLORIDA
PROJECT CONDITION SURVEY
12-FOOT PROJECT
STA. 85+00 THRU STA. 115+00 CUT BY-27
PLAN

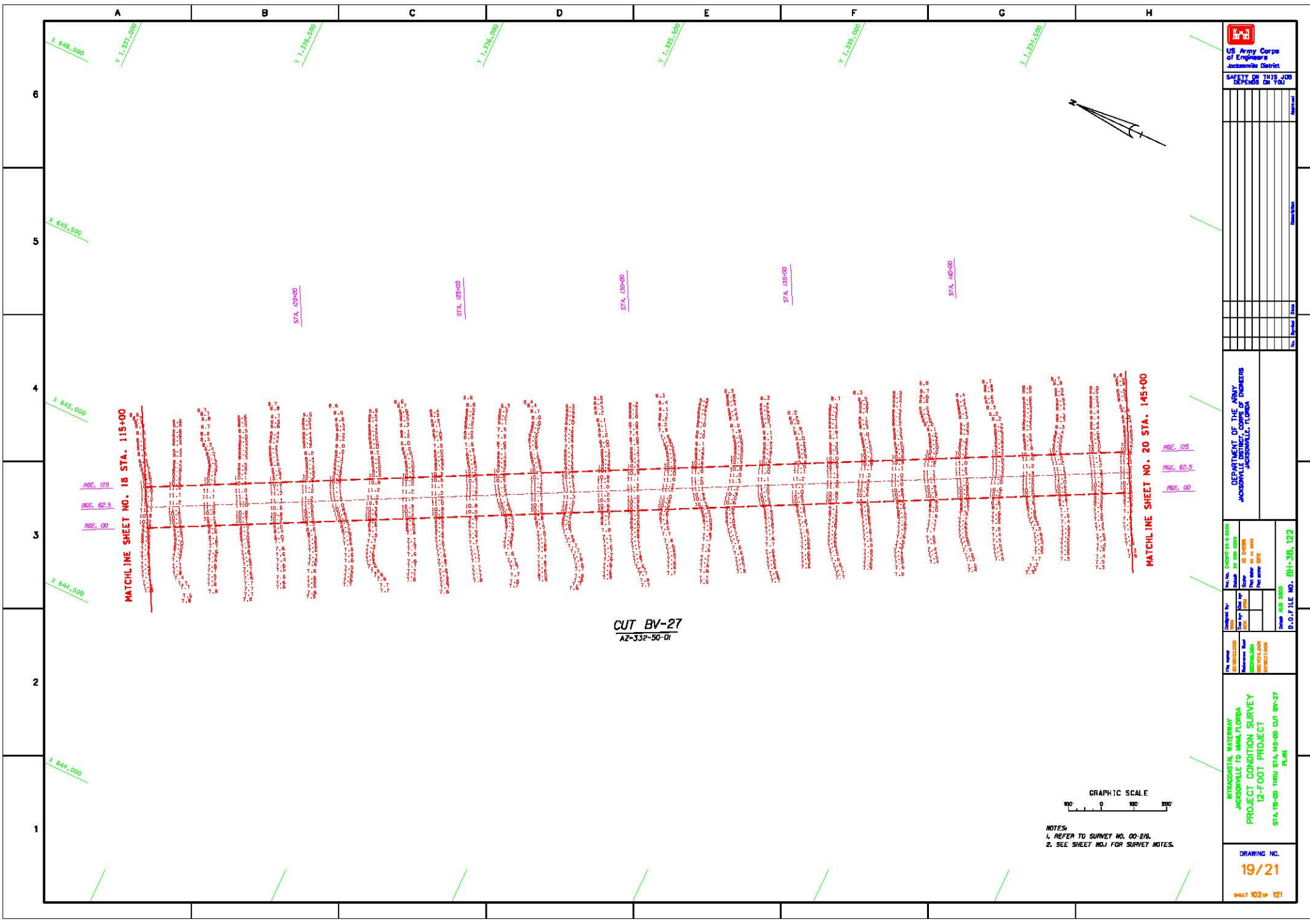
DRAWING NO.
18/21
SHEET 181 OF 121

CUT BY-27
AZ-332-50-01

AID TO NAVIGATION	PLANE COORDINATES		LATITUDE	LONGITUDE
	X	Y		
DBN-17 (B/00)	644,887	1,336,554	28°00'56.04"	80°35'03.49"

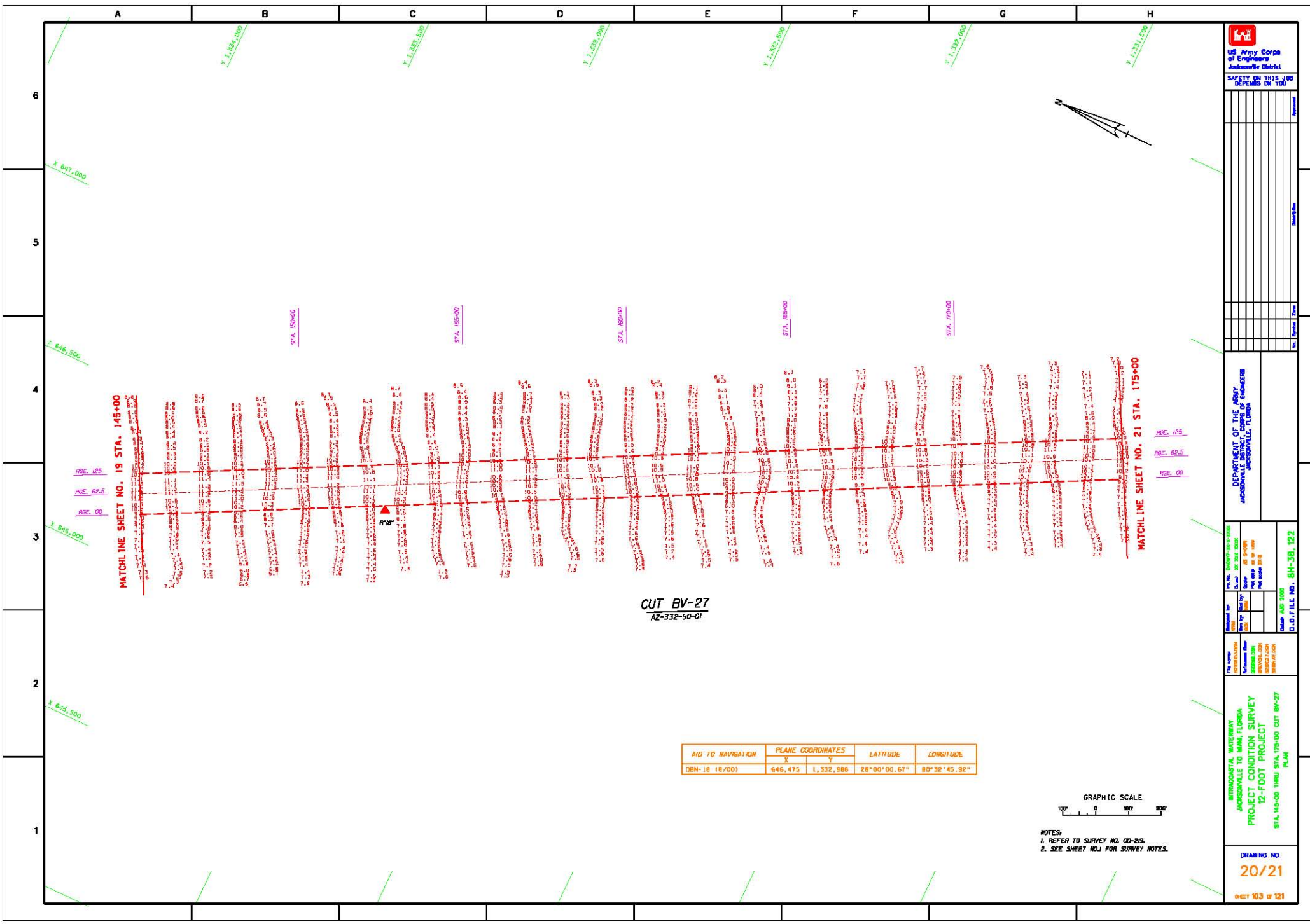


NOTES:
1. REFER TO SURVEY NO. 00-295.
2. SEE SHEET NO. 1 FOR SURVEY NOTES.

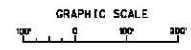


GRAPHIC SCALE

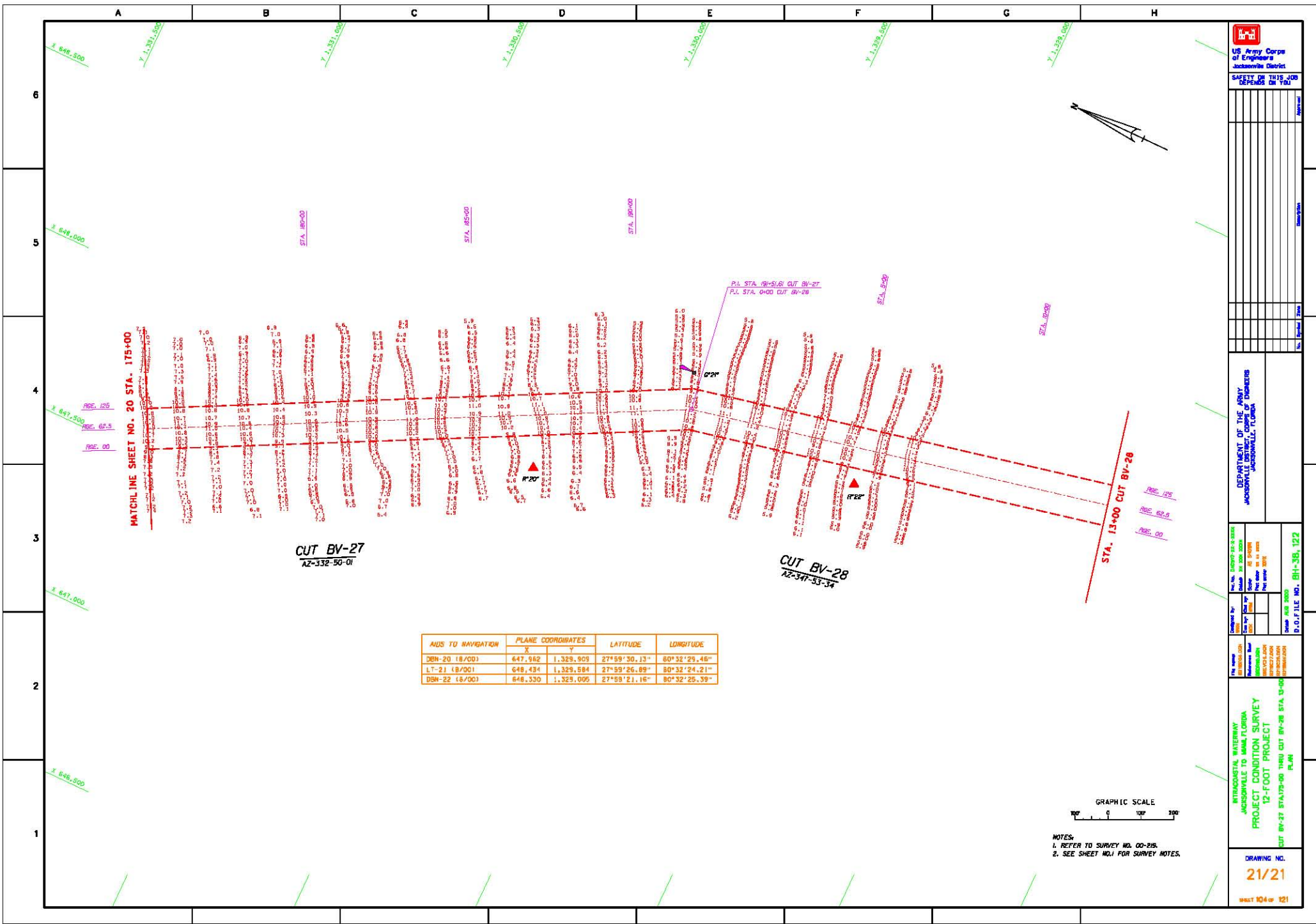
NOTES
 1. REFER TO SURVEY NO. 00-219.
 2. SEE SHEET NO. 1 FOR SURVEY NOTES.




AID TO NAVIGATION	PLANE COORDINATES		LATITUDE	LONGITUDE
	X	Y		
DRH- 18 (R/OD)	646,475	1,332,986	28°00'00.67"	80°32'45.92"



NOTES:
1. REFER TO SURVEY NO. 00-219.
2. SEE SHEET NO.1 FOR SURVEY NOTES.



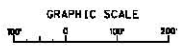
NO.	DATE	REVISION	BY	APP'D



US Army Corps of Engineers
 Jacksonville District
 DRAWING BY THIS JOB
 DEPENDS ON JOB

PROJECT NO. 12-9870 12-9-00 DRAWN BY 21 12-17-98 CHECKED BY 21 12-17-98 IN CHARGE 21 12-17-98	DEPARTMENT OF THE ARMY JACKSONVILLE DISTRICT OFFICE JACKSONVILLE, FLORIDA
--	---

AIDS TO NAVIGATION	PLANE COORDINATES	LATITUDE	LONGITUDE
DBN-20 (B/OO)	647,962 1,329,909	27°59'30.13"	80°32'29.48"
LT-21 (B/OO)	648,434 1,329,584	27°59'26.89"	80°32'24.21"
DBN-22 (B/OO)	648,330 1,329,095	27°59'21.16"	80°32'25.39"



NOTES:
 1. REFER TO SURVEY NO. 00-215.
 2. SEE SHEET NO.1 FOR SURVEY NOTES.

INTERAGENCY HIGHWAY
 JACKSONVILLE TO WALKER FLORIDA
 PROJECT CONDITION SURVEY
 12-FOOT PROJECT
 CUT BV-27 STA.75+00 THRU CUT BV-28 STA. 13+00
 PLAN

DRAWING NO.
21/21
SHEET 104 of 121