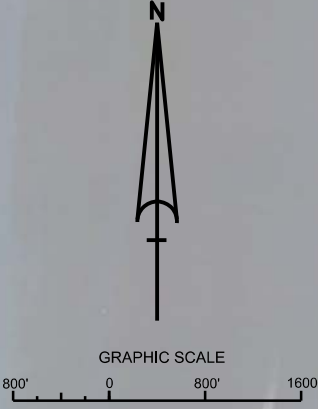


PORT EVERGLADES HARBOR BROWARD COUNTY, FLORIDA POST-HURRICANE MATTHEW EXAMINATION SURVEY FY17 31, 36, 37, 42 AND 45-FOOT PROJECT

SURVEY NOTES

- REFER TO SURVEY NO. 17-014.
 - ELEVATIONS ARE IN FEET AND TENTHS AND REFER TO THE NOAA REPORTED MEAN LOWER LOW WATER (MLLW) TIDAL DATUM, 1983-2001 EPOCH.
 - TIDAL REDUCTIONS WERE OBTAINED UTILIZING A REAL-TIME KINEMATIC (RTK) GPS AND REFERENCED TO MLLW UTILIZING A HYPACK KINEMATIC TIDE DATUM (KTD) MODEL. KTD FILE NAME IS: "PALMBEACH-BROWARD-2016 05 26.KTD".
 - ALL ELEVATIONS ARE BELOW THE CHART DATUM UNLESS PRECEDED BY A (+) SIGN.
 - PLANE COORDINATES ARE BASED ON THE TRANSVERSE MERCATOR PROJECTION FOR THE EAST ZONE OF FLORIDA AND REFERENCED TO NORTH AMERICAN DATUM OF 1983 (NAD83).
 - ALL STATIONING REFERS TO THE CENTERLINE OF THE CHANNEL.
 - THIS SURVEY WAS PERFORMED USING REAL-TIME KINEMATIC GPS POSITIONING WITH THE FOLLOWING REFERENCE BASE LOCATION:
REFERENCE BASE LOCATED AT "USN NORTH RANGE 2 NO. 5" (OPUS PID: CS4034)
TIDE STAFF SET IN JOHN LLOYD STATE PARK FROM NOAA TIDAL MONUMENT "NGS NO2 1973" (OPUS PID: AD5884)
 - DEPTHS DEPICTED BY THIS SURVEY ARE REFERENCED TO MLLW, TIDAL 1983-2001, AS REPORTED BY THE NATIONAL OCEANIC AND ATMOSPHERIC ADMINISTRATION (NOAA). NOAA'S VDATUM MODEL WAS USED AND CALIBRATED TO THE PUBLISHED MLLW HEIGHTS OF THE BENCH MARKS ASSOCIATED WITH THE TIDE GAGE SITE SPECIFIED BELOW:
NOAA TIDAL STATION 872-2957, NORTH DANIA SOUND, FL FOR ENTIRE PROJECT
 - VERTICAL MEASUREMENTS WERE MADE USING A R2SONIC 2024 MULTIBEAM SYSTEM OPERATING AT 240 KHZ. SOUNDINGS SHOWN ARE IN HIGH FREQUENCY.
- | VESSEL | DATE OF SURVEY | CUT |
|---------------|----------------|------------------------------|
| SV FLORIDA II | 04 NOV 2016 | ENTRANCE CHANNEL |
| SV FLORIDA II | 05 NOV 2016 | TURNING BASIN, SP1, SP2, SP3 |
| SV FLORIDA II | 06 NOV 2016 | NAVAIDS |
- AIDS TO NAVIGATION WERE LOCATED DURING THIS SURVEY.
 - THE INFORMATION DEPICTED ON THIS MAP REPRESENTS THE RESULTS OF SURVEYS MADE ON THE DATES INDICATED ABOVE AND CAN ONLY BE CONSIDERED AS INDICATING THE GENERAL CONDITIONS AT THAT TIME. THIS CHART IS SOLELY FOR THE DISTRIBUTION OF AVAILABLE DEPTHS AT THE TIME OF THE SURVEY.
 - SURVEY ACCURACY PERFORMANCE STANDARDS, QUALITY CONTROL, AND QUALITY ASSURANCE REQUIREMENTS WERE FOLLOWED DURING THIS SURVEY IN ACCORDANCE WITH USACE EM 1110-2-1003, HYDROGRAPHIC SURVEYING, 30 NOV 13.

| LEGEND | |
|--------|--------------------|
| | MONUMENT |
| | LIGHTED BEACON |
| | GREEN DAY BEACON |
| | RED DAY BEACON |
| | RED LIGHTED BUOY |
| | GREEN LIGHTED BUOY |
| | CAN BUOY |
| | NUN BUOY |
| | TIDE STAFF |
| 8 | PROJECT DEPTH |



SHEET INDEX

US Army Corps of Engineers
Jacksonville District
SAFETY ON THIS JOB DEPENDS ON YOU

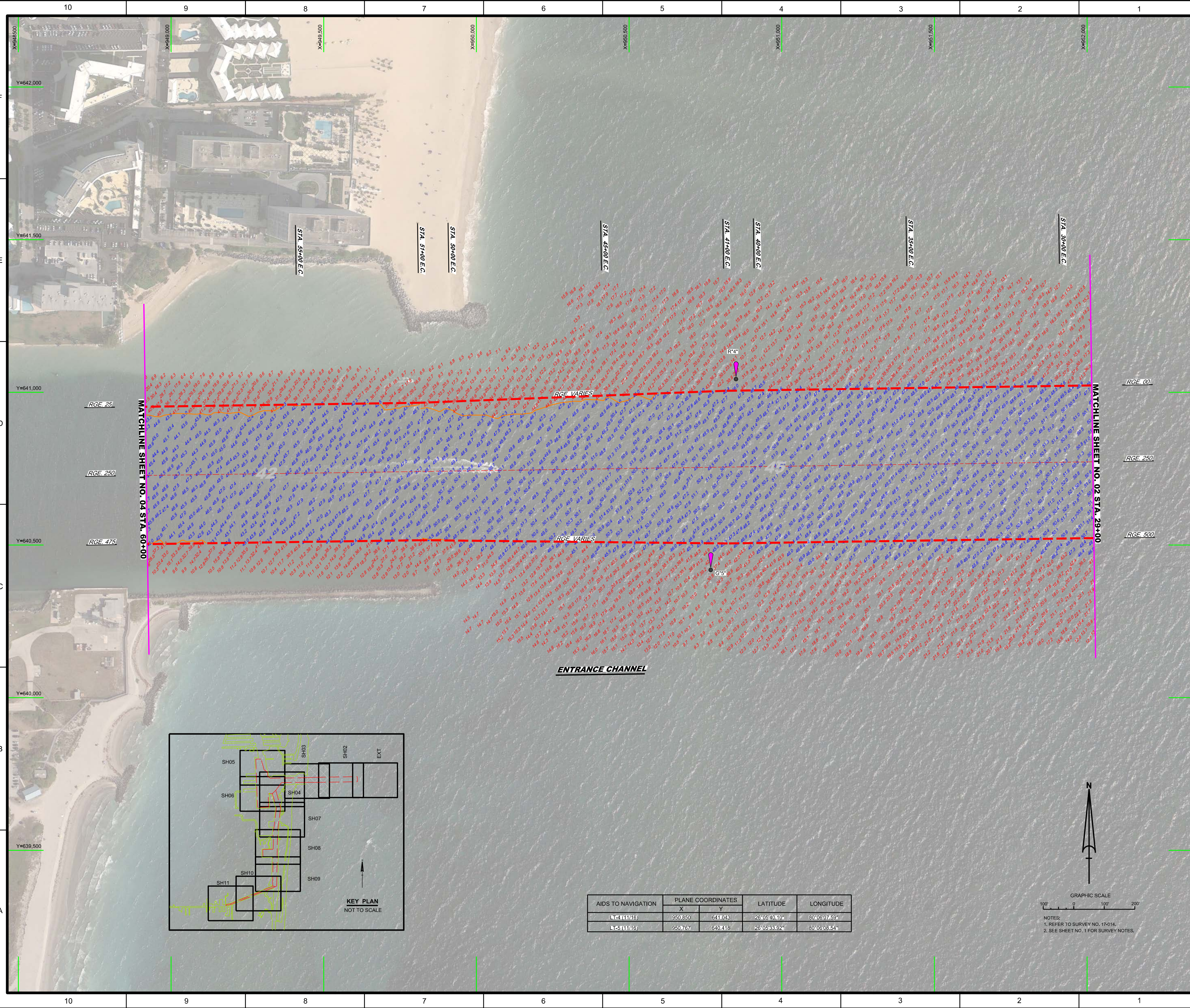
DESIGNED BY: WRM
DRAWN BY: WRM
CHECKED BY: WRM
DATE: NOV 2016

PROJECT: PORT EVERGLADES HARBOR CANAL CUT-1

FILE NAME: 17-014-01-101.DGN

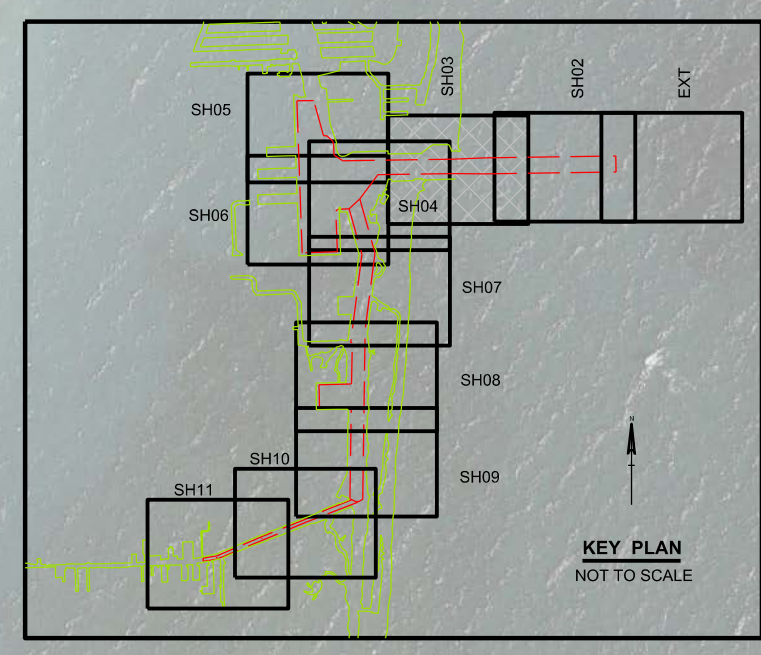
PORT EVERGLADES HARBOR, FLORIDA
POST-HURRICANE MATTHEW EXAM SURVEY FY17
31-FOOT THRU 45-FOOT PROJECT
INDEX, LOCATION AND VICINITY MAP

Scale: AS SHOWN
Drawing no. 1 / 9
SHEET 01 OF 11



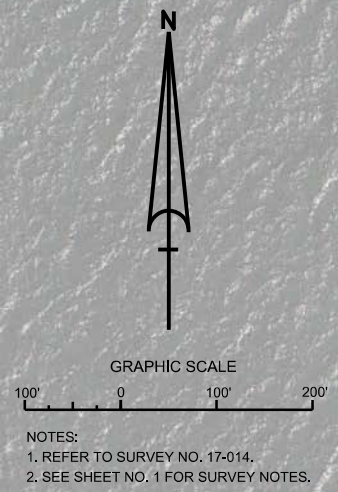
MATCHLINE SHEET NO. 04 STA. 60+00

MATCHLINE SHEET NO. 02 STA. 29+00



ENTRANCE CHANNEL

| AIDS TO NAVIGATION | PLANE COORDINATES | | LATITUDE | LONGITUDE |
|--------------------|-------------------|---------|--------------|--------------|
| | X | Y | | |
| LT-4 (11/16) | 950.850 | 641.043 | 26°05'40.10" | 80°06'07.59" |
| LT-5 (11/16) | 950.767 | 640.418 | 26°05'33.92" | 80°06'08.54" |



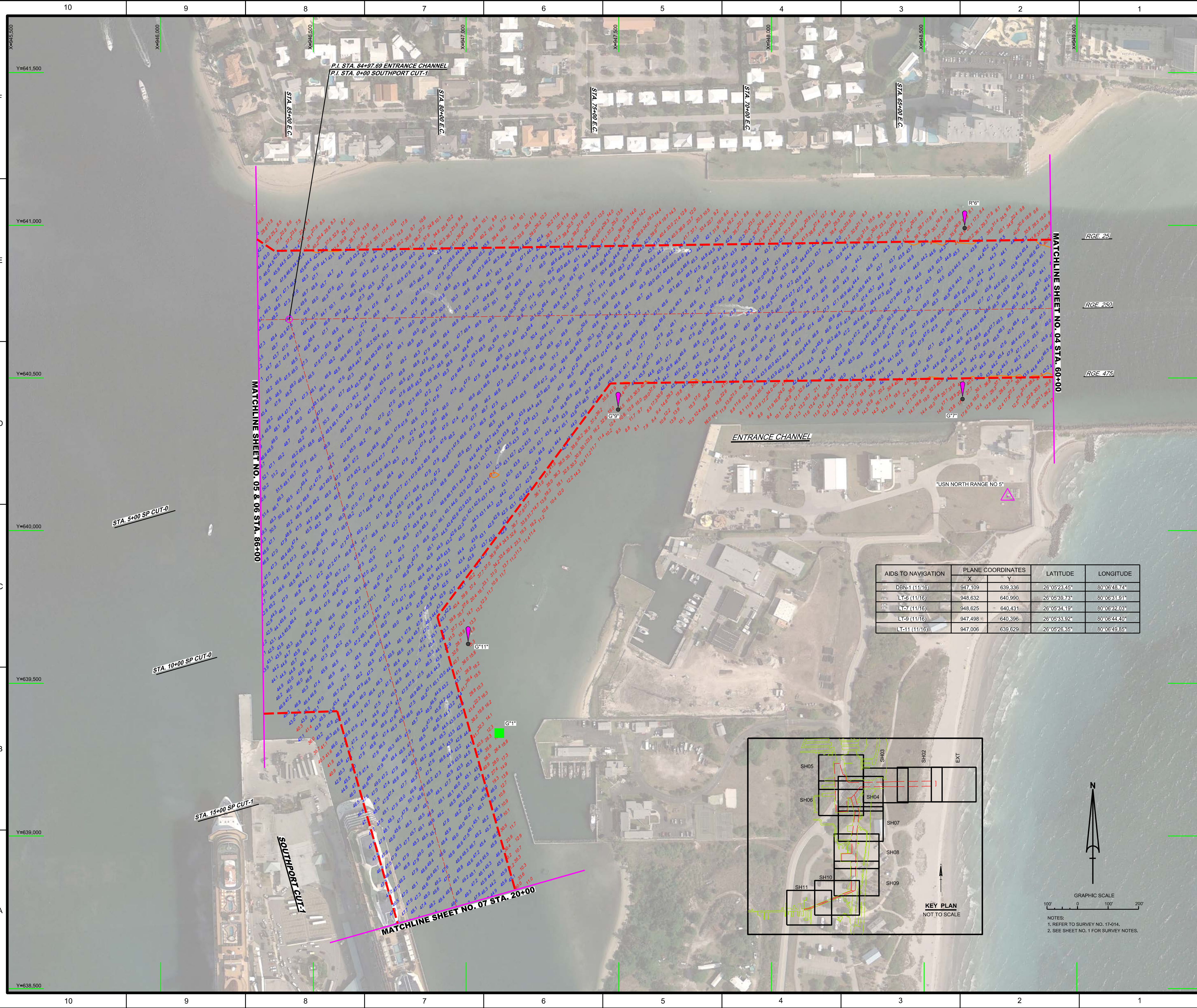
US Army Corps of Engineers
Jacksonville District
SAFETY ON THIS JOB
DEPENDS ON YOU

DEPARTMENT OF THE ARMY
JACKSONVILLE DISTRICT, CORPS OF ENGINEERS
JACKSONVILLE, FLORIDA

Designed by: WRM
Checked by: GHR
Drawn by: WRM
In Charge: WRP/SEA/NA/XXX
Date: NOV 2016

PORT EVERGLADES HARBOR, FLORIDA
POST-HURRICANE MATTHEW EXAM SURVEY FY17
31-FOOT THRU 45-FOOT PROJECT
STA. 60+00 THRU STA. 86+00 ENTRANCE CHANNEL &
STA. 0+00 THRU STA. 20+00 SOUTHPORT CUT-1
PLAN

Scale: AS SHOWN
Drawing no. **4 / 9**
SHEET 04 OF 11



P.I. STA. 84+97.69 ENTRANCE CHANNEL
P.I. STA. 0+00 SOUTHPORT CUT-1

STA. 55+00 E.C.

STA. 80+00 E.C.

STA. 20+00 E.C.

STA. 20+00 E.C.

STA. 55+00 E.C.

MATCHLINE SHEET NO. 04 STA. 60+00

MATCHLINE SHEET NO. 05 & 06 STA. 86+00

STA. 5+00 SP CUT-0

STA. 10+00 SP CUT-0

STA. 15+00 SP CUT-1

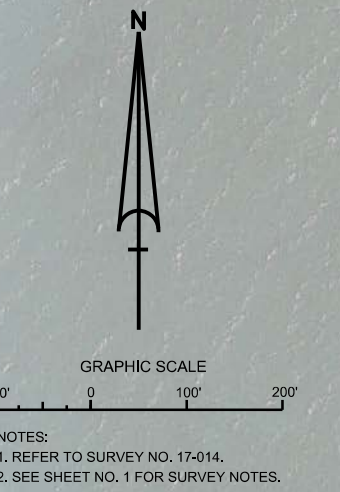
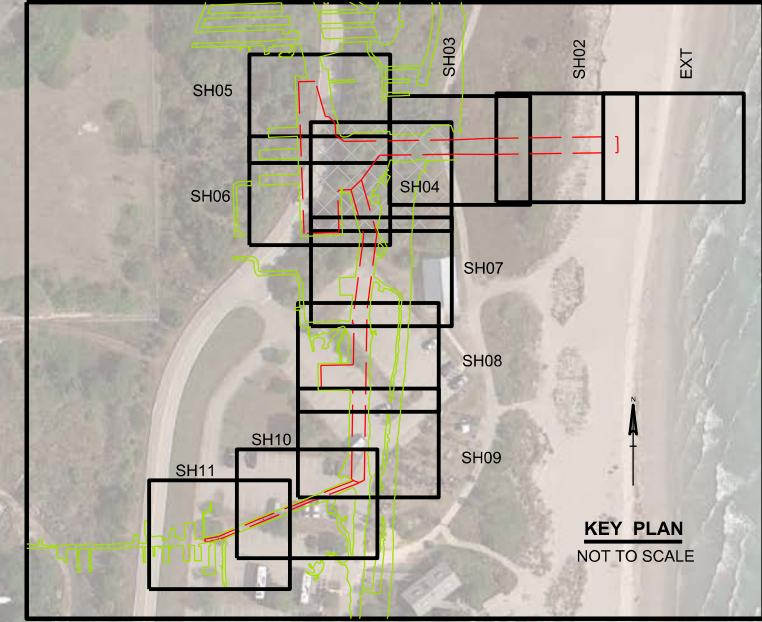
SOUTHPORT CUT-1

MATCHLINE SHEET NO. 07 STA. 20+00

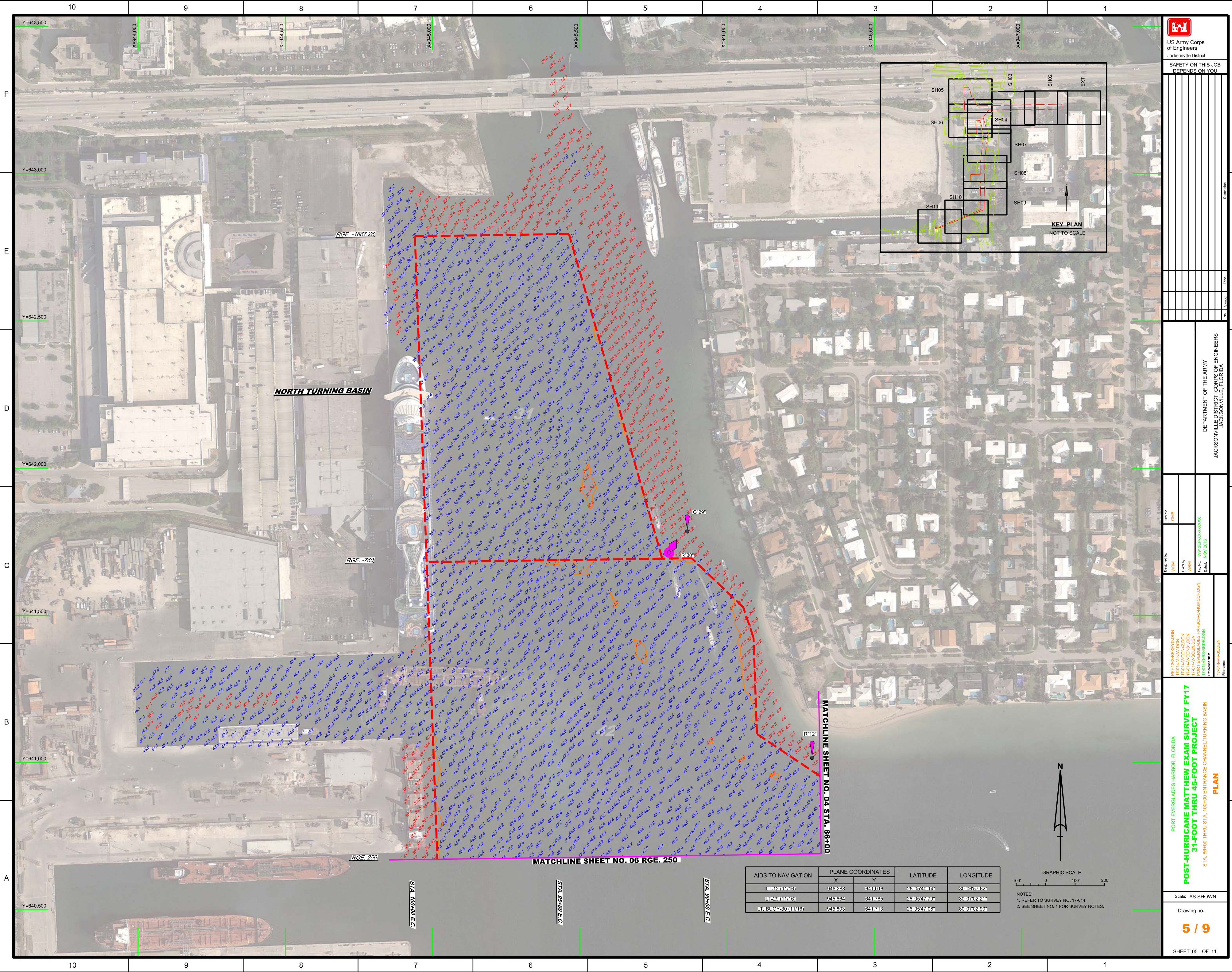
ENTRANCE CHANNEL

"USN NORTH RANGE NO 5"

| AIDS TO NAVIGATION | PLANE COORDINATES | | LATITUDE | LONGITUDE |
|--------------------|-------------------|---------|--------------|--------------|
| | X | Y | | |
| DBN-1 (11/16) | 947.109 | 639.336 | 26°05'23.45" | 80°06'48.74" |
| LT-6 (11/16) | 948.632 | 640.990 | 26°05'39.73" | 80°06'31.91" |
| LT-7 (11/16) | 948.625 | 640.431 | 26°05'34.19" | 80°06'32.03" |
| LT-9 (11/16) | 947.498 | 640.396 | 26°05'33.92" | 80°06'44.40" |
| LT-11 (11/16) | 947.006 | 639.629 | 26°05'26.35" | 80°06'49.85" |



NOTES:
1. REFER TO SURVEY NO. 17-014.
2. SEE SHEET NO. 1 FOR SURVEY NOTES.



NORTH TURNING BASIN

RGE -1867.26

RGE -760

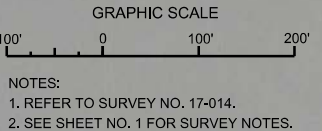
RGE 250

STA 100+00 E.C.

MATCHLINE SHEET NO. 06 RGE. 250

MATCHLINE SHEET NO. 04 STA. 86+00

| AIDS TO NAVIGATION | PLANE COORDINATES | | LATITUDE | LONGITUDE |
|--------------------|-------------------|--------|--------------|--------------|
| | X | Y | | |
| LT-2 (11/16) | 945288 | 641016 | 28°05'40.14" | 80°07'57.62" |
| LT-29 (11/16) | 945864 | 641785 | 28°05'47.79" | 80°07'52.21" |
| LT BUOY-39 (11/16) | 945803 | 641743 | 28°05'47.08" | 80°07'52.50" |



US Army Corps of Engineers
Jacksonville District

SAFETY ON THIS JOB
DEPENDS ON YOU

Scale: AS SHOWN

Drawing no.

5 / 9

SHEET 05 OF 11

PORT EVERGLADES HARBOR, FLORIDA

POST-HURRICANE MATTHEW SURVEY FY17

31-FOOT THRU 45-FOOT PROJECT

STA. 86+00 THRU STA. 100+00 ENTRANCE CHANNEL/TURNING BASIN

PLAN

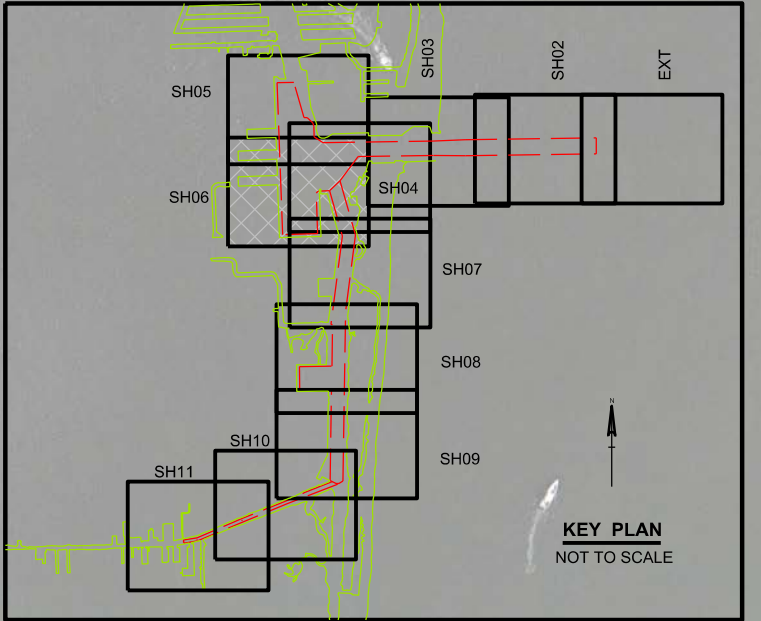
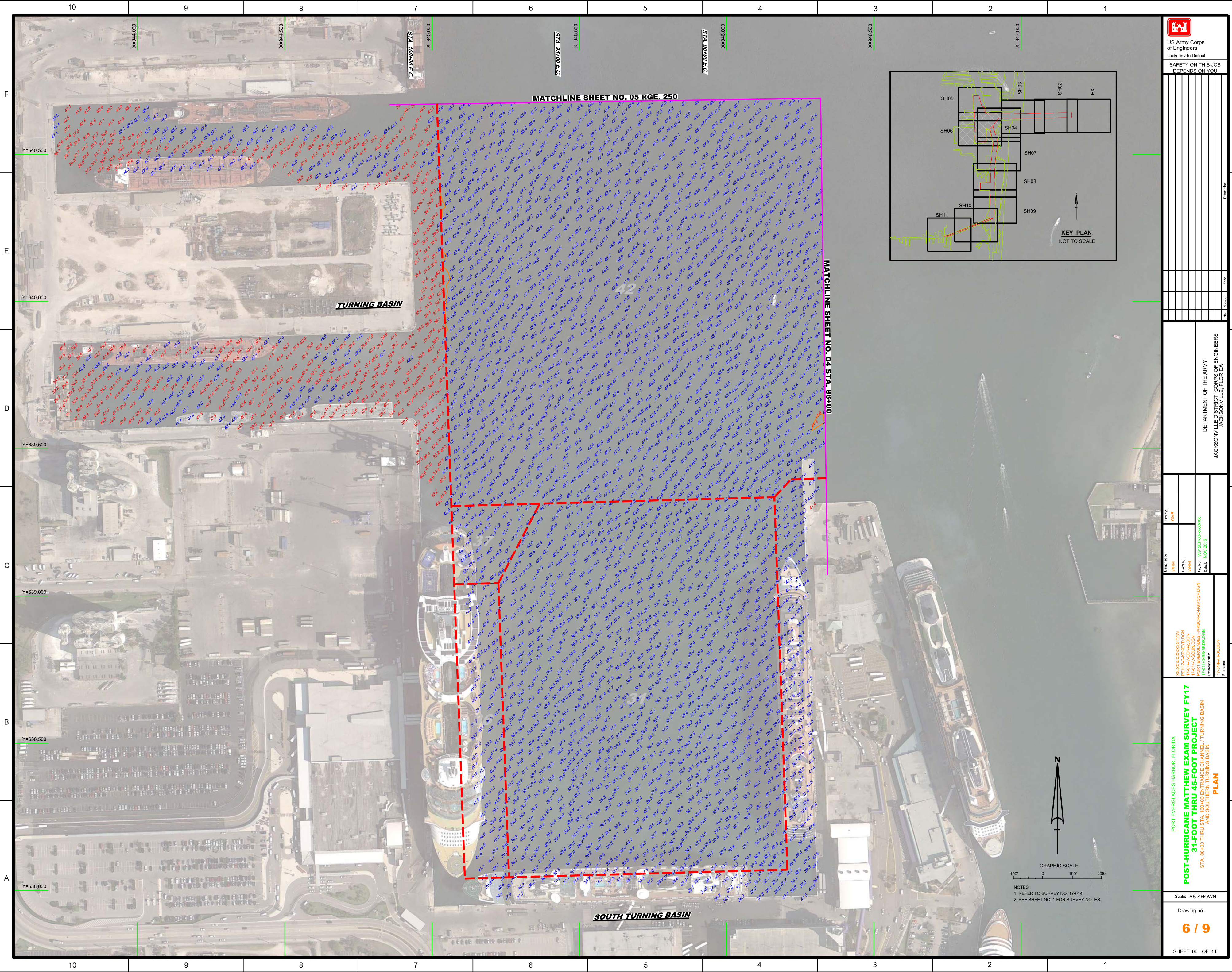
Designed by: WRM
Checked by: GHR

Drawn by: WRM
Reviewed by: WRM

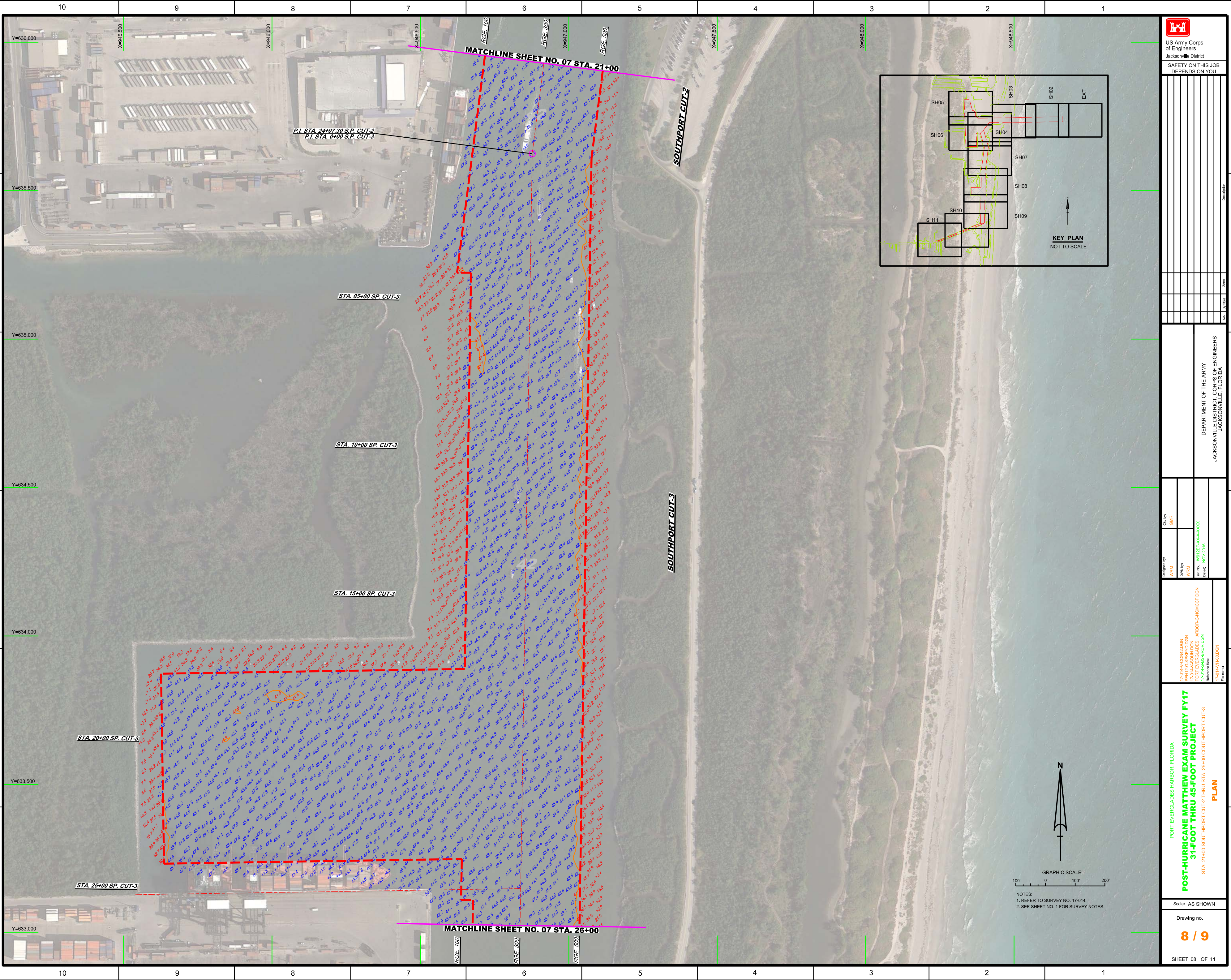
File No: 17-014-0000-0000
Date: NOV 2016

Reference File: 17-014-0000.DGN

DEPARTMENT OF THE ARMY
JACKSONVILLE DISTRICT, CORPS OF ENGINEERS
JACKSONVILLE, FLORIDA



| | |
|--|--|
| <p>US Army Corps of Engineers Jacksonville District</p> | |
| <p>SAFETY ON THIS JOB DEPENDS ON YOU</p> | |
| <p>DESIGNED BY: WRM CHECKED BY: GHR DATE: NOV 2016</p> | |
| <p>PROJECT: PORT EVERGLADES HARBOR CANAL PROJECT SUBJECT: 31-FOOT THRU 45-FOOT PROJECT DRAWING NO: 6/9</p> | |
| <p>DEPARTMENT OF THE ARMY JACKSONVILLE DISTRICT, CORPS OF ENGINEERS JACKSONVILLE, FLORIDA</p> | |
| <p>Scale: AS SHOWN</p> | |
| <p>Drawing no. 6 / 9</p> | |
| <p>SHEET 06 OF 11</p> | |



US Army Corps of Engineers
Jacksonville District
SAFETY ON THIS JOB
DEPENDS ON YOU

| | | | | |
|--|--|--|--|--|
| Checked By: GHR | Designed By: WRM | Drawn By: WRM | File No: W02256-000-0000 | Date: NOV 2016 |
| 17-04-00042.DGN | 17-04-00042.DGN | 17-04-00042.DGN | 17-04-00042.DGN | 17-04-00042.DGN |
| PORT EVERGLADES HARBOUR CANAL DRAINAGE | PORT EVERGLADES HARBOUR CANAL DRAINAGE | PORT EVERGLADES HARBOUR CANAL DRAINAGE | PORT EVERGLADES HARBOUR CANAL DRAINAGE | PORT EVERGLADES HARBOUR CANAL DRAINAGE |

DEPARTMENT OF THE ARMY
JACKSONVILLE DISTRICT, CORPS OF ENGINEERS
JACKSONVILLE, FLORIDA

PORT EVERGLADES HARBOUR, FLORIDA
POST-HURRICANE MATTHEW EXAM SURVEY FY17
31-FOOT THRU 45-FOOT PROJECT
STA. 21+00 SOUTHPORT CUT-2 THRU STA. 26+00 COUTHPORT CUT-3
PLAN

Scale: AS SHOWN
Drawing No. **8 / 9**
SHEET 08 OF 11

MATCHLINE SHEET NO. 08 STA. 26+00

MATCHLINE SHEET NO. 10

STA. 30+00 SP. CUT-3

STA. 35+00 SP. CUT-3

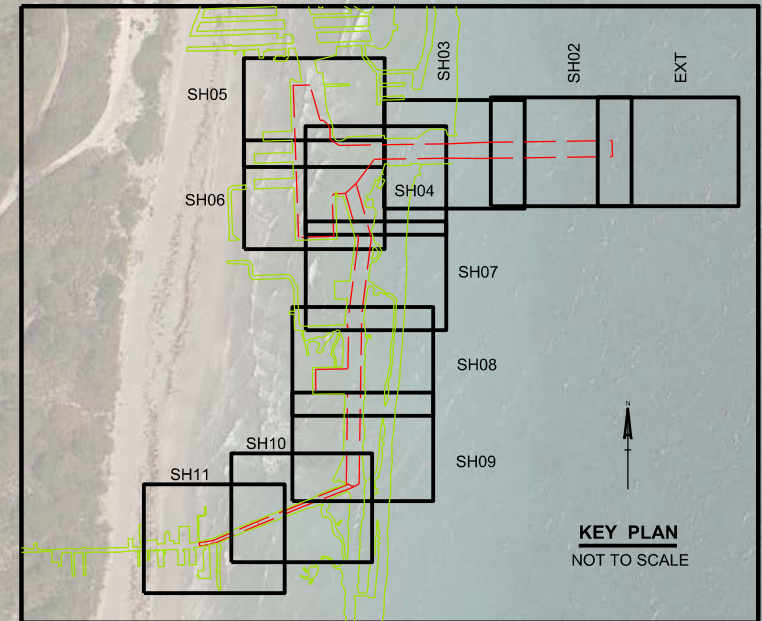
STA. 40+00 SP. CUT-3

STA. 45+00 SP. CUT-3

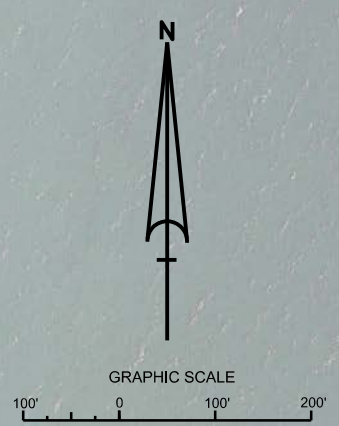
STA. 50+00 SP. CUT-3

STA. 53+25 SP. CUT-3

SOUTHPORT CUT-3



| AIDS TO NAVIGATION | PLANE COORDINATES | | LATITUDE | LONGITUDE |
|--------------------|-------------------|---------|--------------|--------------|
| | X | Y | | |
| LT-35 (11/16) | 946,958 | 630,259 | 26°03'53.56" | 80°06'51.08" |



US Army Corps of Engineers
Jacksonville District
SAFETY ON THIS JOB
DEPENDS ON YOU

DEPARTMENT OF THE ARMY
JACKSONVILLE DISTRICT, CORPS OF ENGINEERS
JACKSONVILLE, FLORIDA

PORT EVERGLADES HARBOR, FLORIDA
POST-HURRICANE MATTHEW EXAM SURVEY FY17
31-FOOT THRU STA. 53+46 SOUTHPORT CUT-3
PLAN

Scale: AS SHOWN
Drawing no. **9 / 9**
SHEET 09 OF 11

Call by: GHR
Designed by: WRM
Drawn by: WRM
File Name: 17-014-08-DGN
Reference File: 17-014-08-DGN
Nov 2016

