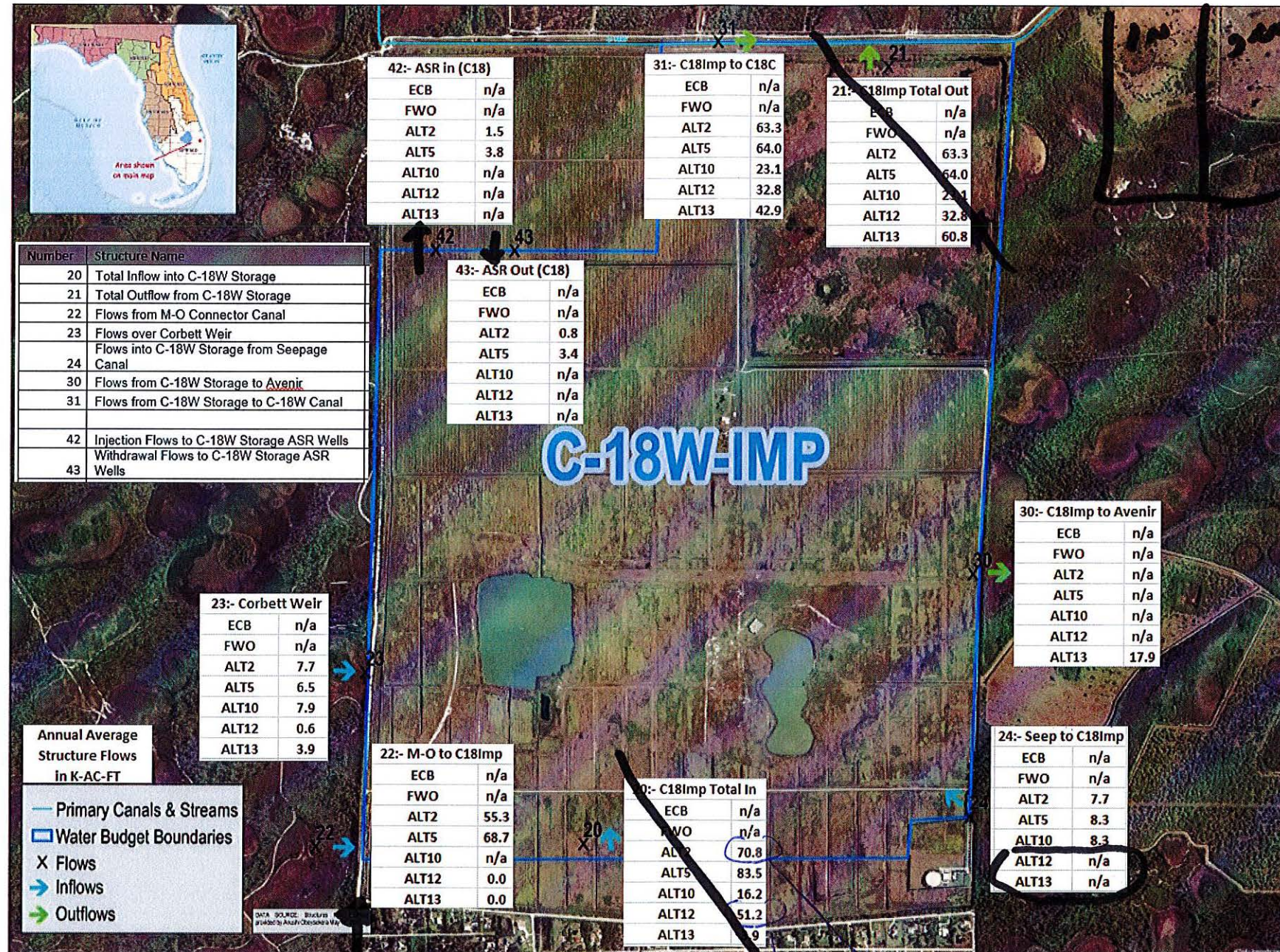


5/30/17 MARK-UPS/NOTES

C-18W-IMP Annual Average Structure Flows in K-AC-FT



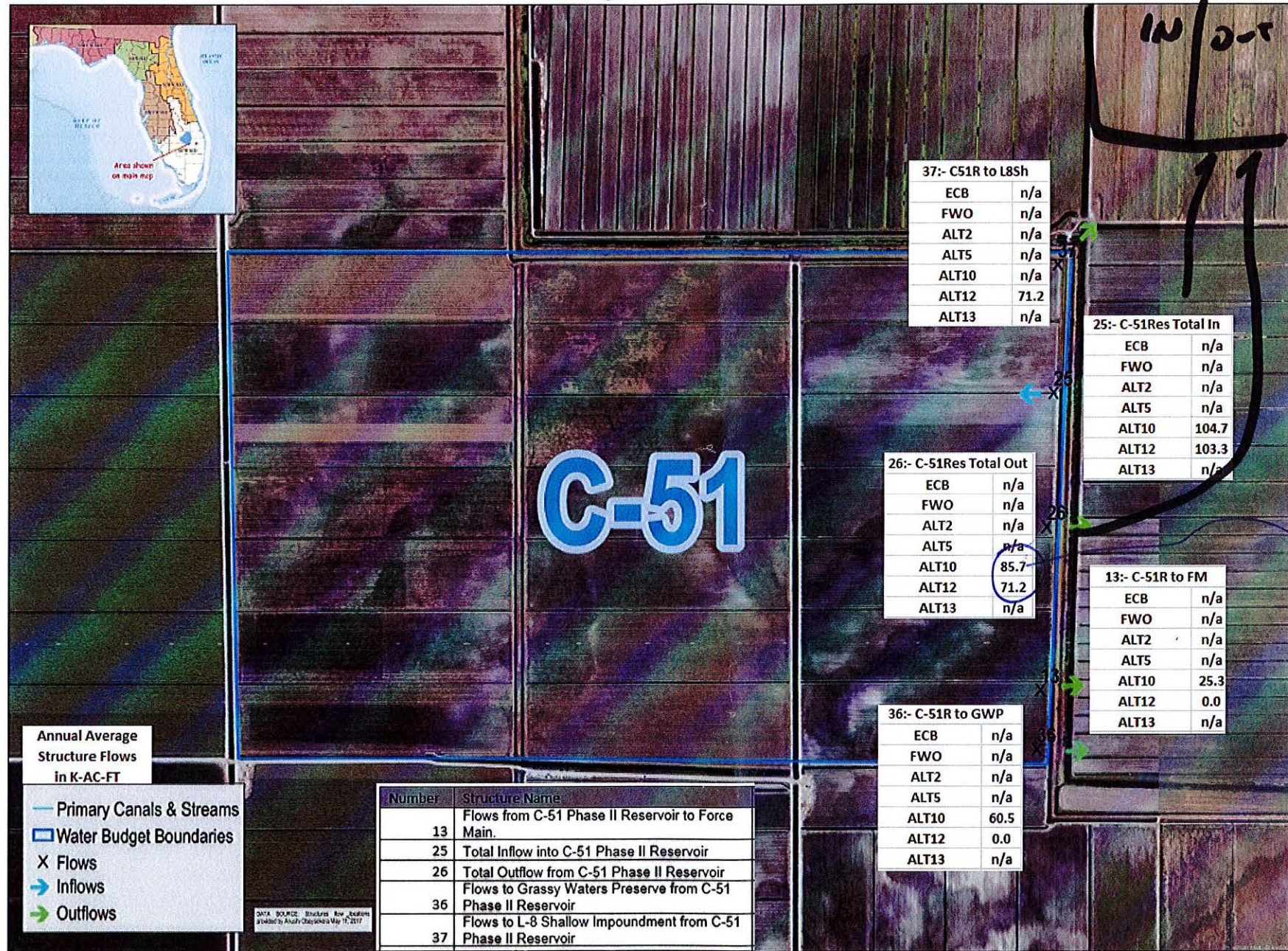
ADD HYBRID ROWS WHEN TIME COMES

#24 MPOUSES?
INCLUDE SEEPAGE?
WOULD SEEPAGE BE OUT OF MECCA? IS THIS SEEPAGE P.S.?
SEEP TO/FRM NATURAL STORAGE TO BE INCLUDED?

Missing #40
Q from LB shallow to C-18 storage

70.7
Where is this water from? (50.6 KAF)
Delete total box when all #'s add up

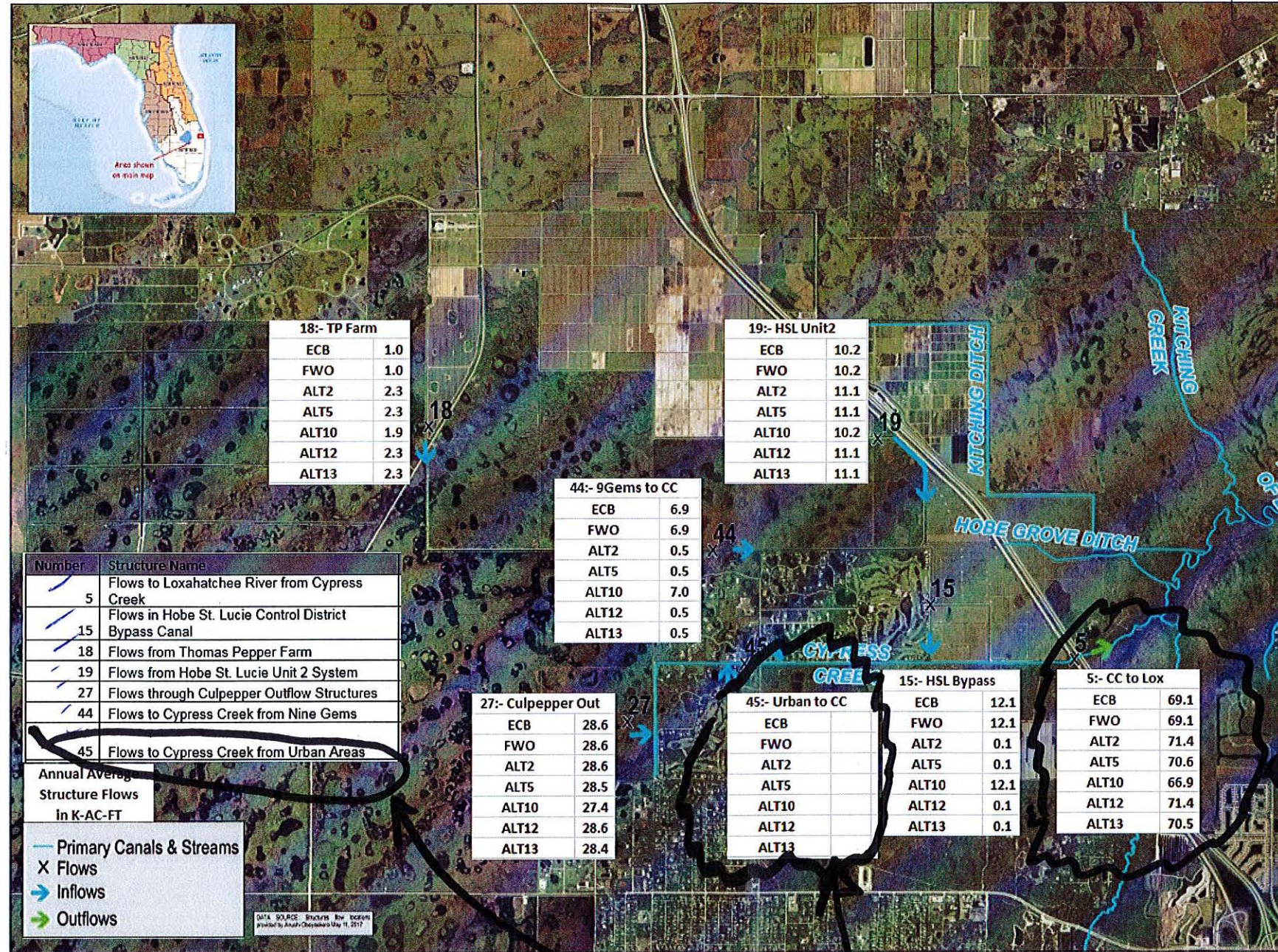
C-51-IMP Annual Average Structure Flows in K-AC-FT



Flowway-3 Annual Average Structure Flows in K-AC-FT

THIS IS DUPLICATE w/ SLIDE 5.

18 MODELS
Why is TP Farm 2
higher in ALT 2?



18:- TP Farm	
ECB	1.0
FWO	1.0
ALT2	2.3
ALT5	2.3
ALT10	1.9
ALT12	2.3
ALT13	2.3

19:- HSL Unit2	
ECB	10.2
FWO	10.2
ALT2	11.1
ALT5	11.1
ALT10	10.2
ALT12	11.1
ALT13	11.1

44:- 9Gems to CC	
ECB	6.9
FWO	6.9
ALT2	0.5
ALT5	0.5
ALT10	7.0
ALT12	0.5
ALT13	0.5

27:- Culpepper Out	
ECB	28.6
FWO	28.6
ALT2	28.6
ALT5	28.5
ALT10	27.4
ALT12	28.6
ALT13	28.4

45:- Urban to CC	
ECB	
FWO	
ALT2	
ALT5	
ALT10	
ALT12	
ALT13	

15:- HSL Bypass	
ECB	12.1
FWO	12.1
ALT2	0.1
ALT5	0.1
ALT10	12.1
ALT12	0.1
ALT13	0.1

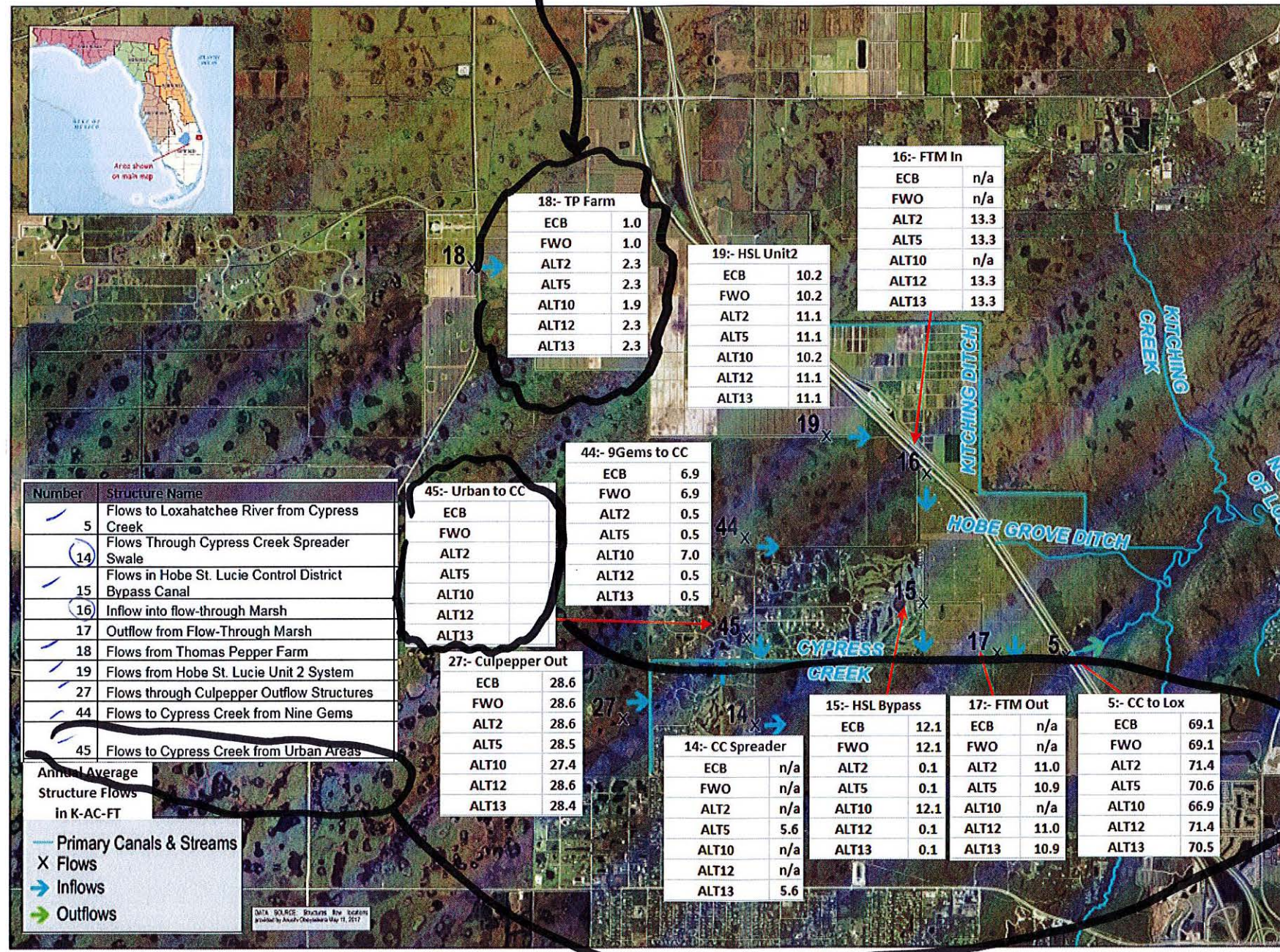
5:- CC to Lox	
ECB	69.1
FWO	69.1
ALT2	71.4
ALT5	70.6
ALT10	66.9
ALT12	71.4
ALT13	70.5

5 MODELS:
Why are ALT 2, 5, 12, 13
Q DIFFERENT?

Will/Can this BE provided? IF NOT, USE THE BOX.

3 Why more Q in ALTS?

Flowway-Alt Annual Average Structure Flows in K-AC-FT

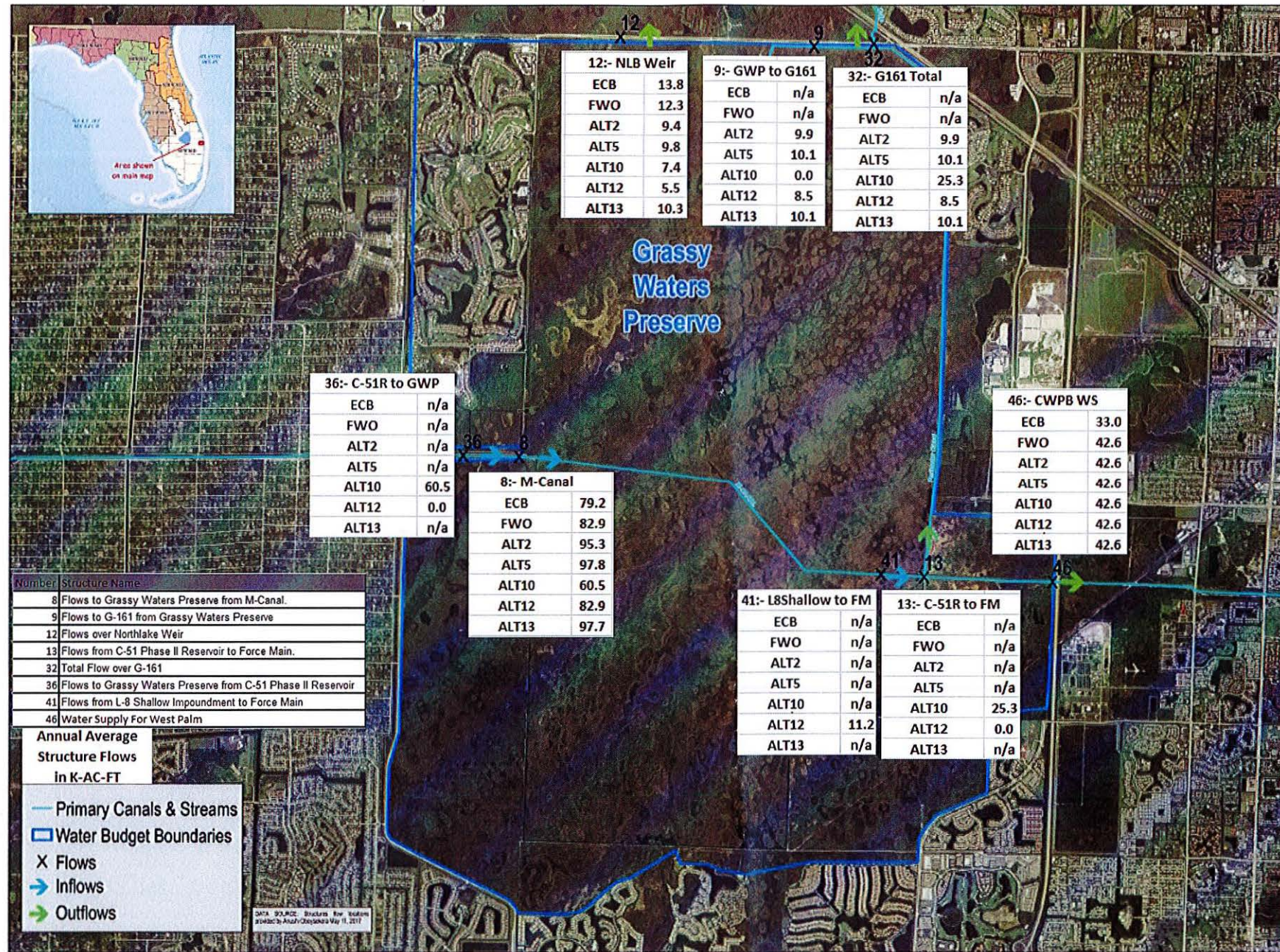


MODIFIED
HSL unit 2 > HSL BYPASS?
Why FTM OUT VARY BY ALT?
(27), (17), (44)

USE COMMENTS FROM SLIDE 4.

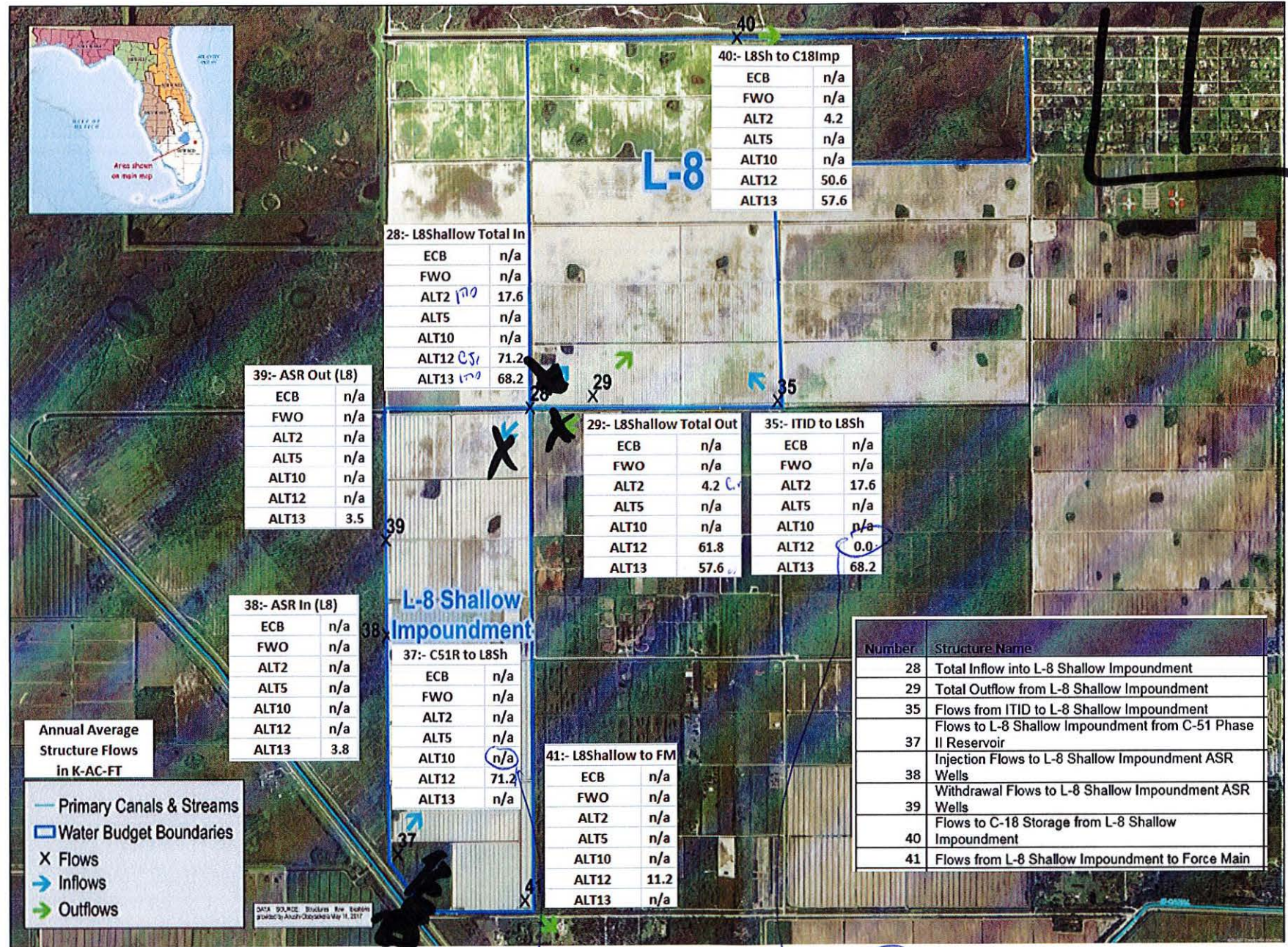
Delete row 45 if box not being used

Grassy Waters Preserve Annual Average Structure Flows in K-AC-FT



MODIFIED
 8 = 36 FOR ALT 10?

L-8 Impoundment Annual Average Structure Flows in K-AC-FT



MODIFIED
 (28) ITID, CS, AND
 L-8 BASIN ALL POSSIBLE
 SOURCES, NOT MUTUALLY
 EXCLUSIVE OF EACH OTHER

(37) NOT N/A FOR
 ALT 12 OK

(35) Why 0 for ALT.12

LRWRP Model Domain Annual Average Structure Flows in K-AC-FT

