

LOXAHATCHEE RIVER WATERSHED RESTORATION PROJECT

Project Delivery Team Meeting


December 15, 2014



One of the Last Old Growth Cypress
Floodplains in the SE Florida



Last Large Freshwater Wetland
Corridor in Project Area



Vulnerable estuarine habitats



U.S. ARMY



US Army Corps
of Engineers



MEETING PURPOSE AND AGENDA

- **Welcome, Introductions, Leadership Remarks**
- **Project SMART Planning**
- **Virtual Tour**
- **SMART Planning Requirements**
- **NEPA Overview**
- **Problems and Opportunities**
- **Milestone, Schedule, Budget**
- **Public Comments**
- **Next Steps**



Leadership Remarks



LRWRP Project Planning – CERP Overview

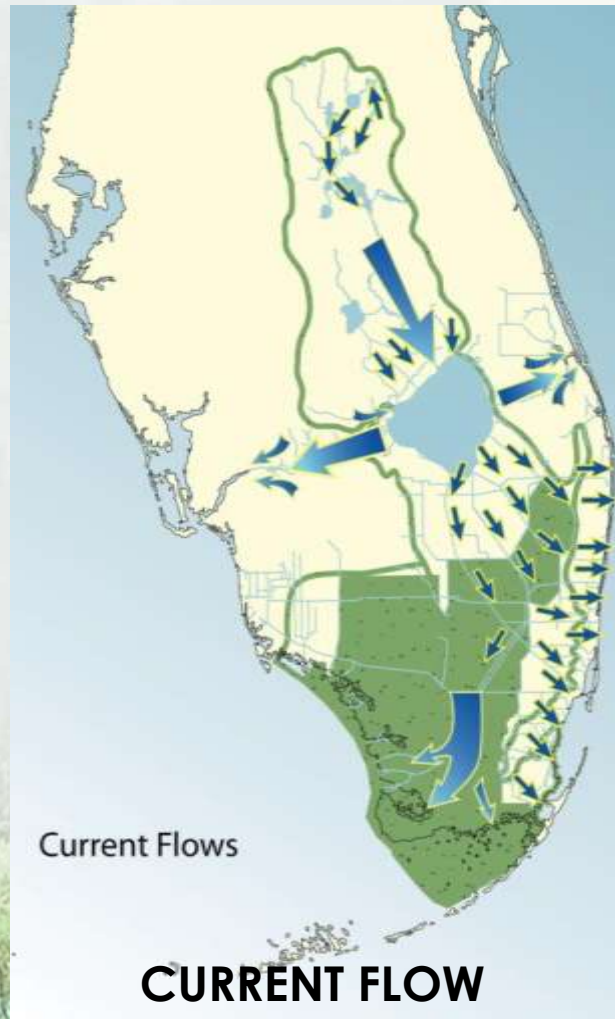
Presenter: Matt Morrison,
SFWMD



OVERARCHING CERP GOAL



HISTORIC FLOW



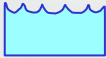
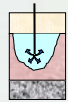
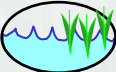

CURRENT FLOW

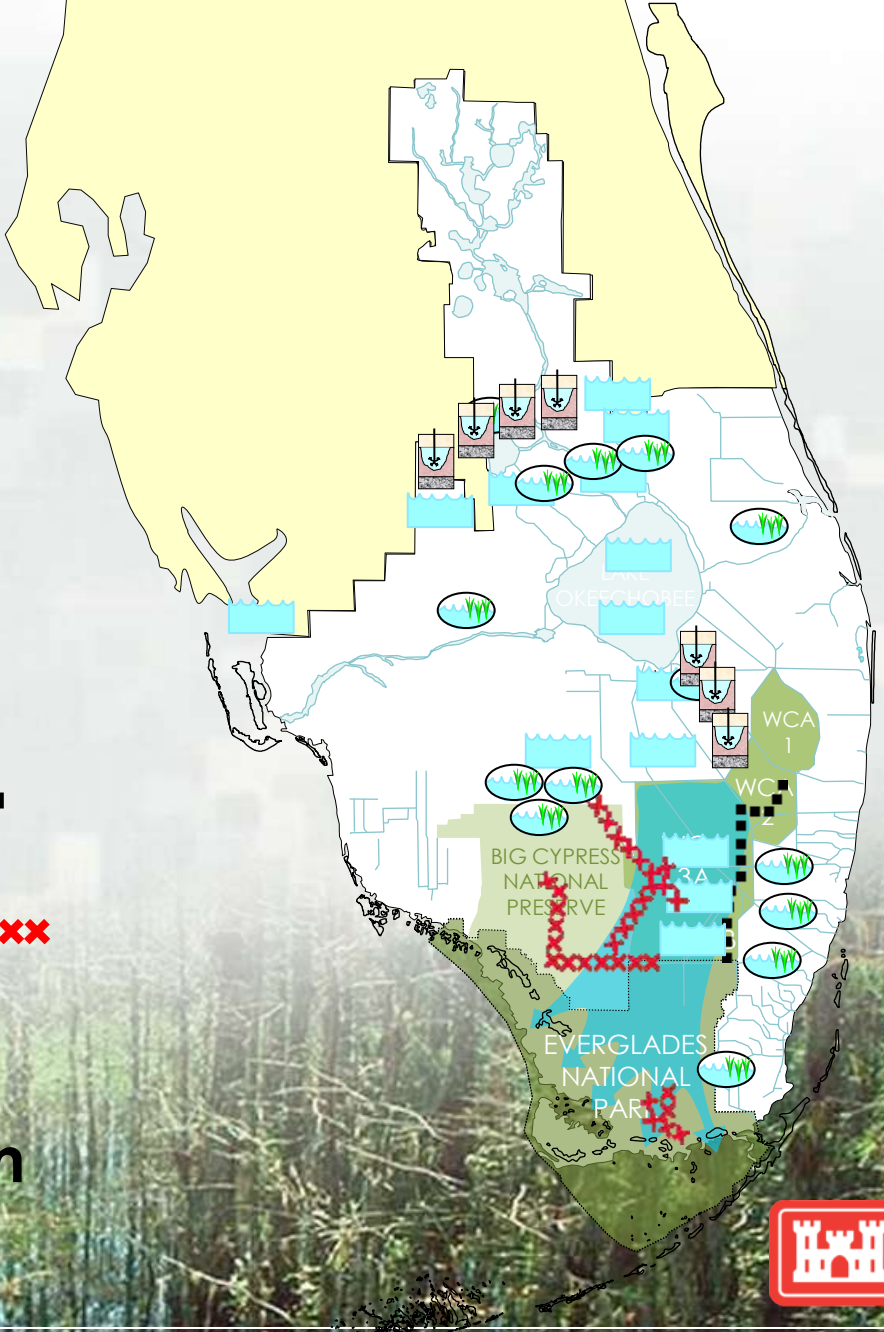


RESTORED FLOW



COMPREHENSIVE EVERGLADES RESTORATION PLAN

- 68 Components
 - ▶ Storage  Surface  ASR
 - ▶ STAs for water quality 
 - ▶ Seepage management ■■■■
 - ▶ Removing barriers to flow 
 - ▶ Revised operations
- 30+ year implementation



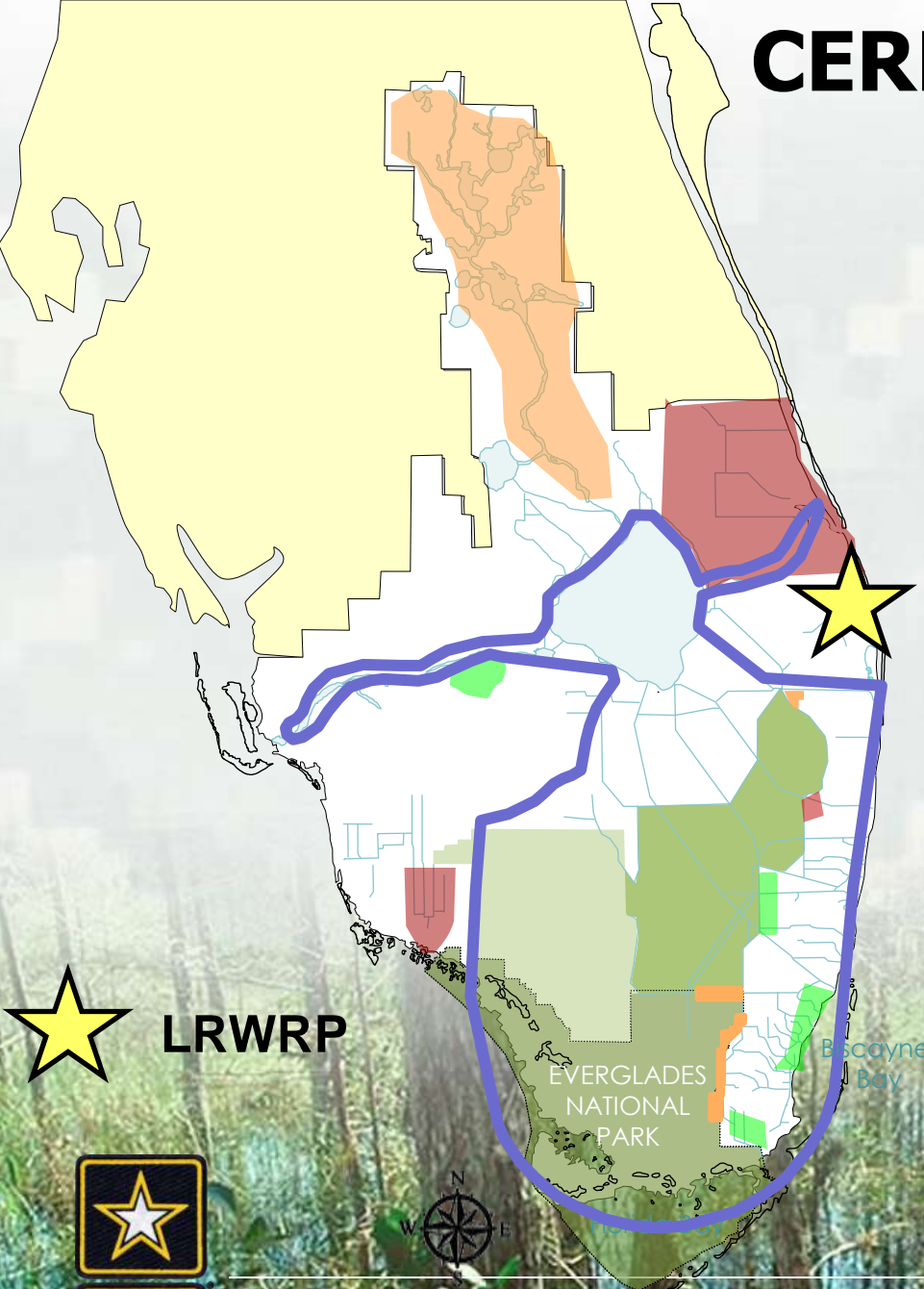
CERP IMPLEMENTATION

- **Foundation Projects**
 - ▶ Kissimmee River
 - ▶ C-111 South Dade
 - ▶ C-51/STA-1E
 - ▶ Modified Water Deliveries

- **1st Generation CERP**
 - ▶ Site 1 Impoundment
 - ▶ IRL-South
 - ▶ Picayune Strand

- **2nd Generation CERP**
 - ▶ C-43 Reservoir
 - ▶ Broward County WPA
 - ▶ C-111 Spreader Canal
 - ▶ Biscayne Bay Coastal Wetlands

- **3rd Generation**
 - ▶ Central Everglades



LRWRP

EVERGLADES
NATIONAL
PARK

Biscayne
Bay



STUDY AREA

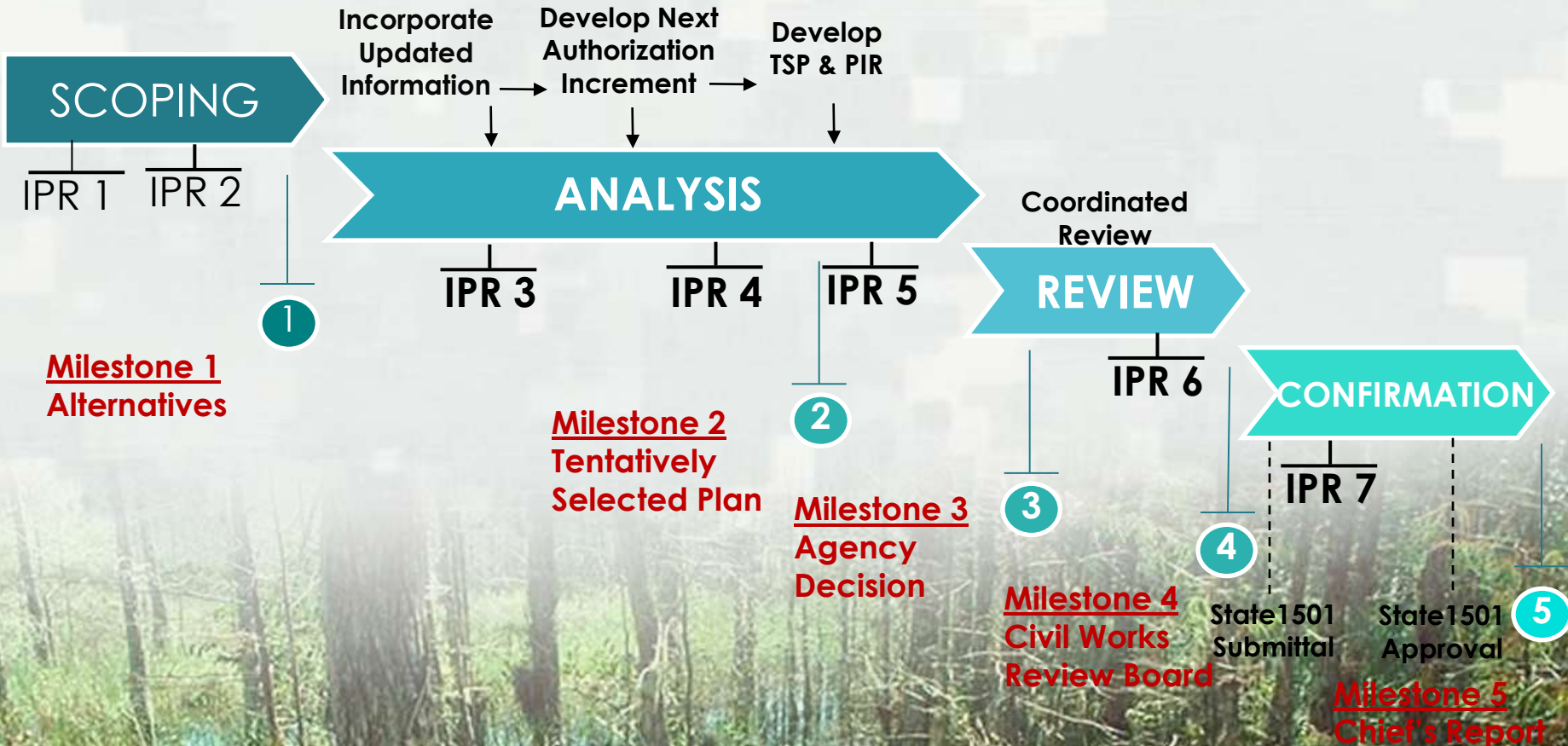


U.S. ARMY



LRWRP PLANNING PROCESS

TARGET - 36 MONTHS



IPR: In-Progress Review with Corps Leadership



CERP GOALS AND OBJECTIVES

GOAL: Enhance Ecological Values

- Improve habitat and functional quality
- Improve native plant and animal species abundance and diversity

GOAL: Enhance Economic Values and Social Well Being

- Increase availability of fresh water (agriculture/municipal/industrial)
- Provide recreational opportunities
- Protect cultural and archeological resources and values



PLANNING CONSTRAINTS

- **Section 601(h)(5) of WRDA 2000 and Chapter 373.1501(4)(d), F.S.**
 - ▶ **Savings Clause**
 - **Avoid any reduction in levels of service for flood protection**
 - **Provide replacement sources of water of comparable quantity and quality for existing legal users**
- **Meet applicable water quality standards**
- **Use of publically owned lands**
- **Excessive Costs**



PUBLIC PARTICIPATION PROCESS



Enhance opportunities for meaningful public engagement

- Public Scoping Meetings
- Corps Hosted Public Meetings
- Regularly Scheduled PDT Meetings
- Use of Existing Forums to Engage Stakeholders
 - SFWMD Governing Board
 - Water Resources Advisory Commission
- Topic meetings to address particular issues
- Others?



Project Purpose and Scope Update

Presenters:

Dr. Orlando Ramos-Gines, USACE
Beth Kacvinsky, SFWMD

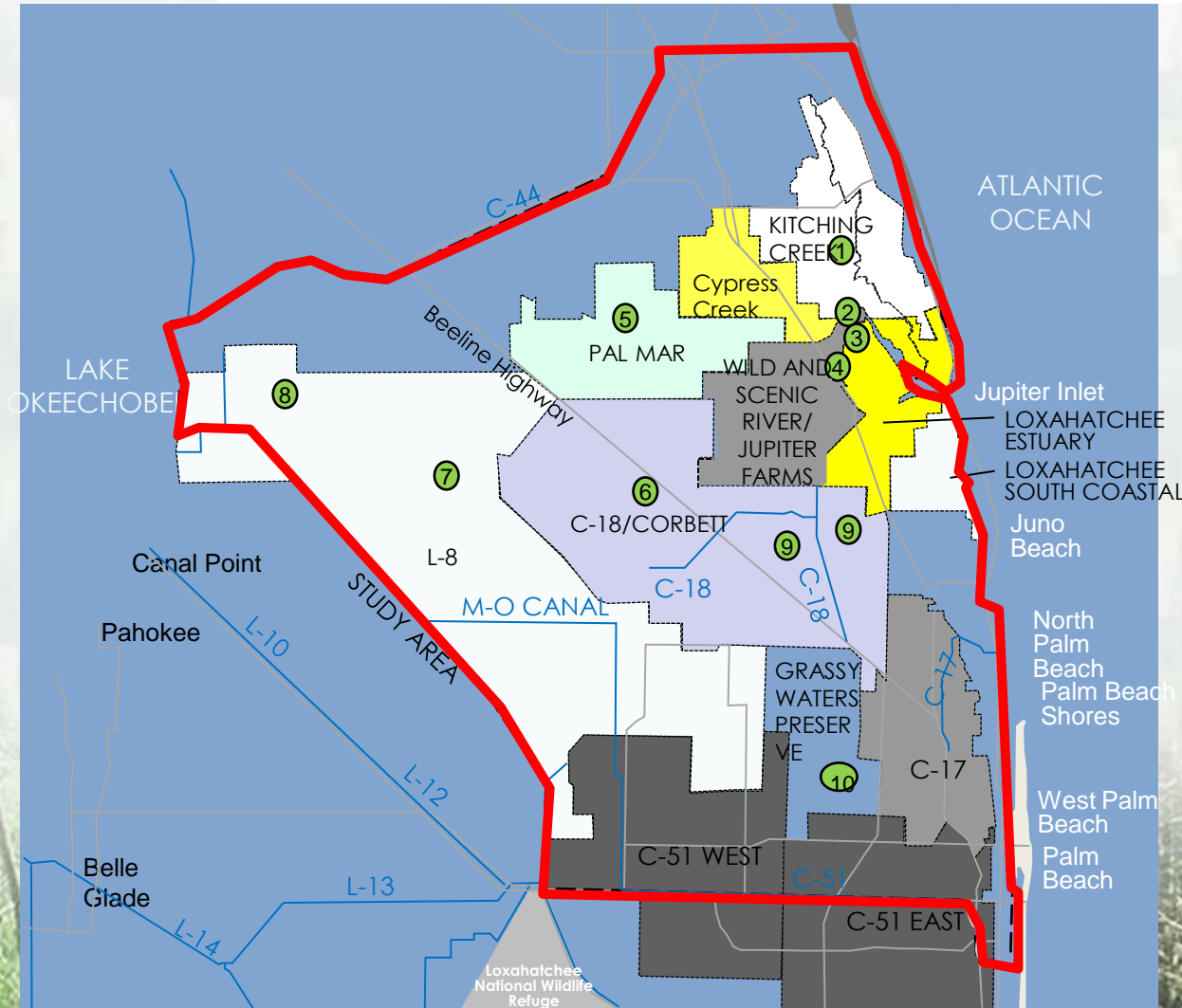


PROJECT PURPOSE

- **Improve the Quality, Quantity, Timing and Distribution of water deliveries from watershed to the Loxahatchee River and Estuary**
- **Improve hydrologic connections between the protected natural areas at the headwaters to the ‘National Wild and Scenic’ Loxahatchee River North-West Fork and its tributaries**



STUDY AREA



NATURAL AREAS

- 1: Kitching Creek
- 2: Moonshine Creek
- 3: Cypress Creek
- 4: Lainhart Dam
- 5: Pal Mar
- 6: Hungryland Slough
- 7: J.W. Corbett Wildlife Management Area (WMA)
- 8: Dupuis Management Area
- 9: Loxahatchee Slough
- 10: Grassy Waters Preserve



HISTORY OF LOXAHATCHEE RIVER WRP

2000 Congress approved the Restudy (Yellow Book)

2003-2005

- North Palm Beach County Phase 1 Project Management Plan
- Substantial Hydrologic and Hydraulic and Geotechnical analyses
- USACE HQ Guidance Feasibility Scoping Meeting Guidance – benefits formulation approach, constraints, project assumptions

2006-2011

- Working on finalizing draft Alternative Formulation Briefing documents
- Management directed hold (2011)

2011-2013

- L-8 Reservoir component re-purposed as Flow Equalization Basin (FEB) for Restoration Strategies
- Purchase of Mecca Farms by the SFWMD



PROJECT EVOLUTION

YELLOW BOOK TO 2011 TO 2014

Yellow Book

1. L-8 Basin Modifications (KPh1)
2. Southern C-51/L-8 Reservoirs (GGG)
3. C-17 Pumping and Treatment (X)
4. C-51 Pumping and Treatment (Y)
5. Pal-Mar and J.W. Corbett Wildlife Management Area (WMA) Hydropattern Restoration (OPE)
6. Lake Worth Lagoon Restoration (OPE)

2011 AFB

1. L-8 Basin Modifications
2. C-51/L-8 Reservoirs
- ~~3. C-17 Pumping and Treatment~~
- ~~4. C-51 Pumping and Treatment~~
5. Pal-Mar and J.W. Corbett Wildlife Management Area (WMA) Hydropattern Restoration
6. Lake Worth Lagoon Restoration

Current Components

1. L-8 Basin Modifications
- ~~2. C-51/L-8 Reservoirs~~
- ~~3. C-17 Pumping and Treatment~~
- ~~4. C-51 Pumping and Treatment~~
5. Pal-Mar and J.W. Corbett Wildlife Management Area (WMA) Hydropattern Restoration
- ~~6. Lake Worth Lagoon Restoration~~
7. Mecca Reservoir/Impoundment
8. L-8/C-51 Aquifer Storage Recovery (K)



RECOMMENDATIONS FOR PROPOSED LRWRP SCOPE CHANGES

- **Restoration/reconnection of natural areas on publically-owned lands through flow ways**
- **L-8 Reservoir no longer considered as a source of water; re-purposed for restoration strategies**
- **Mecca Farms property and Aquifer Storage and Recovery (ASR) to be considered as potential storage options**
- **Main source of water from western C-18 basin; supplemented by L-8 basin and JW Corbett WMA**



PDT DISCUSSION

