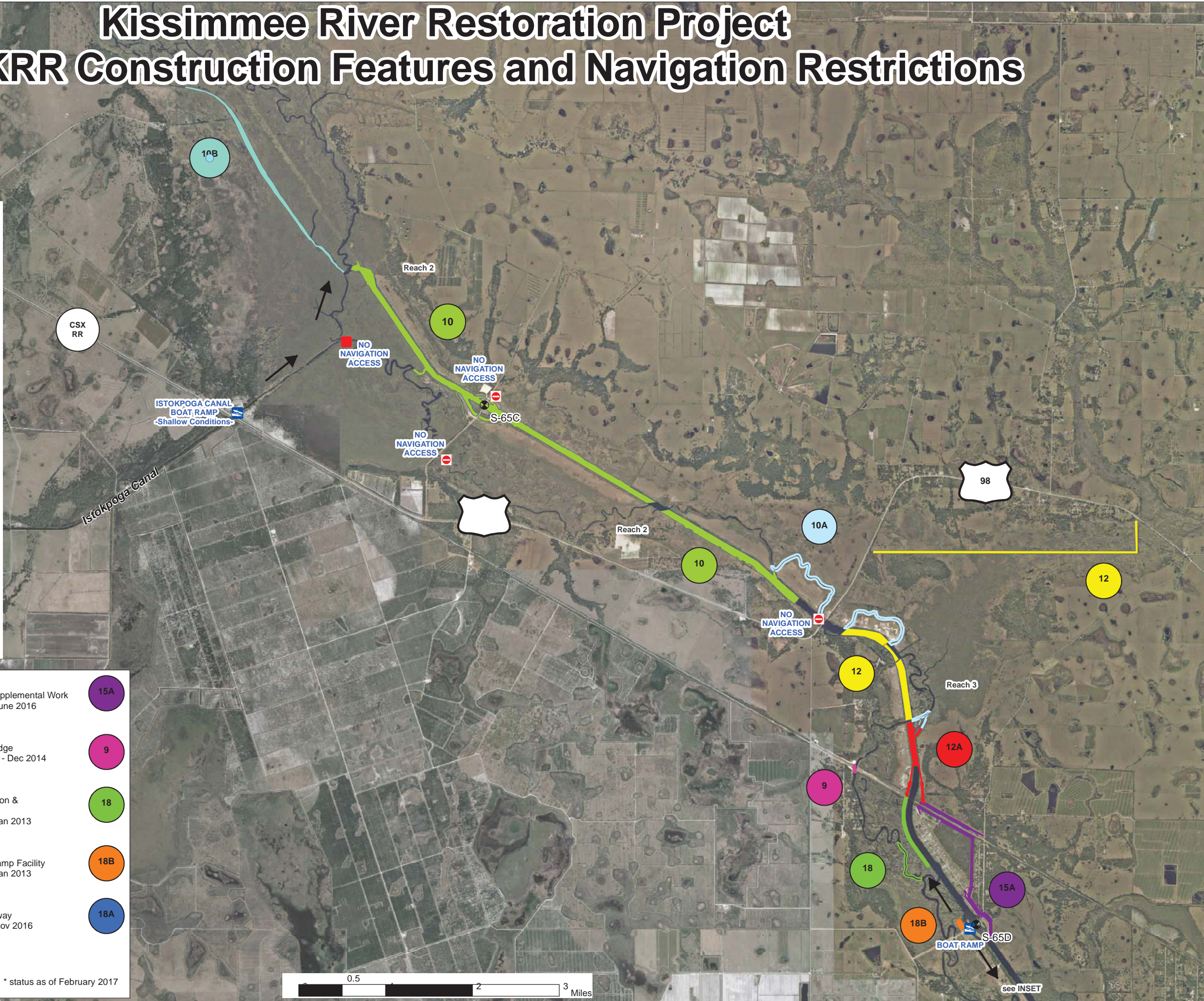




Kissimmee River Restoration Project

Major KRR Construction Features and Navigation Restrictions



CNT 10B - MacArthur Ditch Backfill Scheduled Transfer to SFWMD - May 2017		CNT 15A - River Acres Supplemental Work Transferred to SFWMD - June 2016	
CNT 10 - C-38 Reach 2 Backfill Scheduled Construction Completion - Aug 2018		CNT 9 - CSX Railroad Bridge CSX Transfer Acceptance - Dec 2014	
CNT 10A - Reach 2 & 3 Oxbow Excavation Transferred to SFWMD - Oct 2012		CNT 18 - Oxbow Excavation & Embankment Transferred to SFWMD - Jan 2013	
CNT 12 - C-38 Reach 3 Backfill & Bass Embankment Degrade Construction Completed - Oct 2016 Scheduled Backfill Repairs - August 2017		CNT 18B - S-65D Boat Ramp Facility Transferred to SFWMD - Jan 2013	
CNT 12A - S-69 Weir & Backfill Scheduled Contract Award - August 2017		CNT 18A - S-65EX1 Spillway Transferred to SFWMD - Nov 2016	
No Navigation Access until Aug 2018			

* status as of February 2017