

# Cultural Resources



---

**BUILDING STRONG®**

# Cultural Resources

- Consultation Ongoing
- Corps' Determination: No Adverse Effects
  - ▶ Test is of limited duration
  - ▶ Predicted frequency of S-333 releases
  - ▶ Stage increase at G-3273
- ERTP Programmatic Agreement conditions and stipulations do not apply to deviations



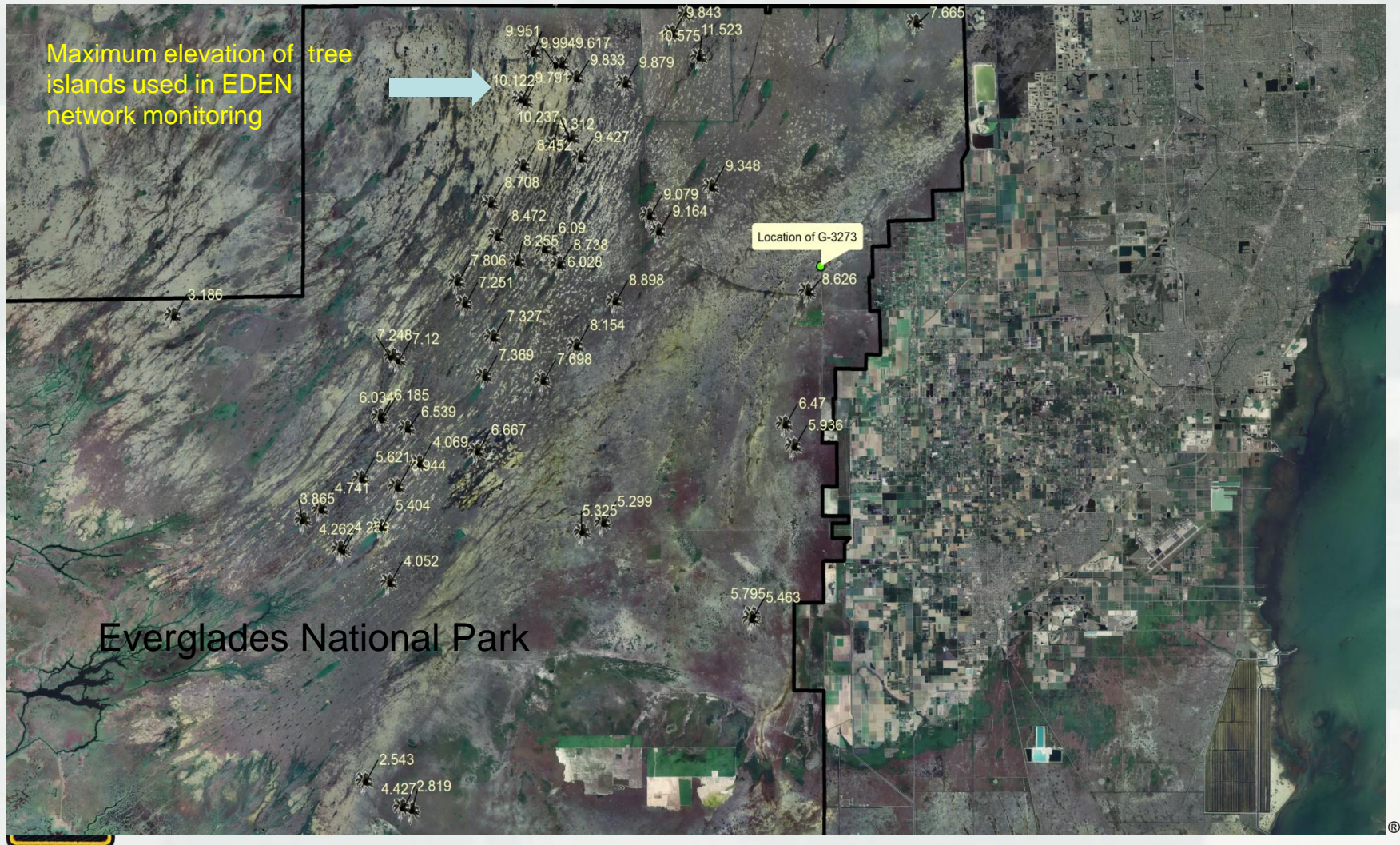
# Cultural Resources Analysis

- 58 ENP Tree Islands
  - ▶ 35 known to contain archaeological sites
- Four periods of rain driven high water periods were examined. Each indicated period mimicked water levels that may be expected during the G-3273 relaxation.
  - ▶ 6-1 thru 6-24, 2012 G-3273 average 6.84 ft (IOP)
  - ▶ 9-19 thru 10-3 2012 G-3273 average 7.14 ft (IOP)
  - ▶ 7-3 thru 7-8, 2013 G-3273 average 6.93 ft (ERTP)
  - ▶ 9-19 thru 9-24, 2013 average 7.35 ft (ERTP)
- Four periods of analysis allows for better examination and to account for variables within environmental conditions





# Cultural Resources Analysis



example of GIS tool utilized.

# Cultural Resources Considerations

- Test is designed to be short term (1-2 years), no adverse effects on cultural resources are anticipated as interaction with the increased water elevations are extremely negligible of the duration of the test.
- Modeling of 4 periods indicates that tree islands with archaeological sites typically occur on islands of higher elevation.
- Monitoring of water elevations established within the ERTP Programmatic Agreement utilizing established EDEN Network will continue to be used for monitoring of cultural resources.





# Cultural Resources Considerations

- Monitoring designed to continue to track water elevations located within 35 archaeological sites.
  - ▶ While inundation is not anticipated, should this occur then an evaluation of the causes will be conducted to facilitate any needed changes to the operations parameters of the test and ensure no impacts would have resulted from the operational portion of the test.
- Natural rain driven inundation of the sites does occur and is anticipated to occur during the test and as such will not be considered an impact related to this test.

