

FACT SHEET
COMPREHENSIVE EVERGLADES RESTORATION PLAN

Site 1 Impoundment

Construction General (C)

Congressional Districts: 18, 19, 20, 21, 22, 23, 24

1. DESCRIPTION

The Site 1 Impoundment project was authorized for construction by the Water Resource Development Act of 2007. The purpose of this project is to supplement water deliveries to the Hillsboro Canal by capturing and storing excess water currently discharged to the Atlantic Intra-coastal Waterway. The 1,660 acre impoundment will store up to 13,280 acre-feet of water. These supplemental deliveries will reduce demands on Lake Okeechobee and Loxahatchee National Wildlife Refuge (LNWR). The impoundment will also provide groundwater recharge, reduce seepage from adjacent natural areas, and help prevent saltwater intrusion by releasing impounded water back to the Hillsboro Canal when conditions dictate.

2. FUNDING

Estimated Total Cost	\$307,394,000
Estimated Federal Cost	153,975,000
Allocation thru FY13*	65,720,000
Carry-In for FY14	307,509
Allocation for FY14	2,700,000
President's Budget	2,227,000
FY15	

*Allocation through FY132 includes ARRA funding of \$44,125,000

3. SPONSOR

South Florida Water Management District
3301 Gun Club Road
West Palm Beach, Florida 33406

4. STATUS

The first construction contract for phase 1 of the project was awarded in October 2010 and terminated in July 2012 with approximately 20 percent of the work completed. A new contract was awarded to Munilla Construction Management d/b/a MCM in January 2013. Completion of this contract is scheduled for FY 2015. Phase 2 of the project is on hold and will require Congressional authorization for a new total project cost.

Figure 1: Site 1 Impoundment Project

Created By: Michael Kohler
Created On: 6/29/2004
Revised On: xxx/xx/xxxx

Filename:
\\E41727\cerpzone\Projects\p140\rts3678\rts3678_site1_area.mxd



0 1.5 3 6
Miles



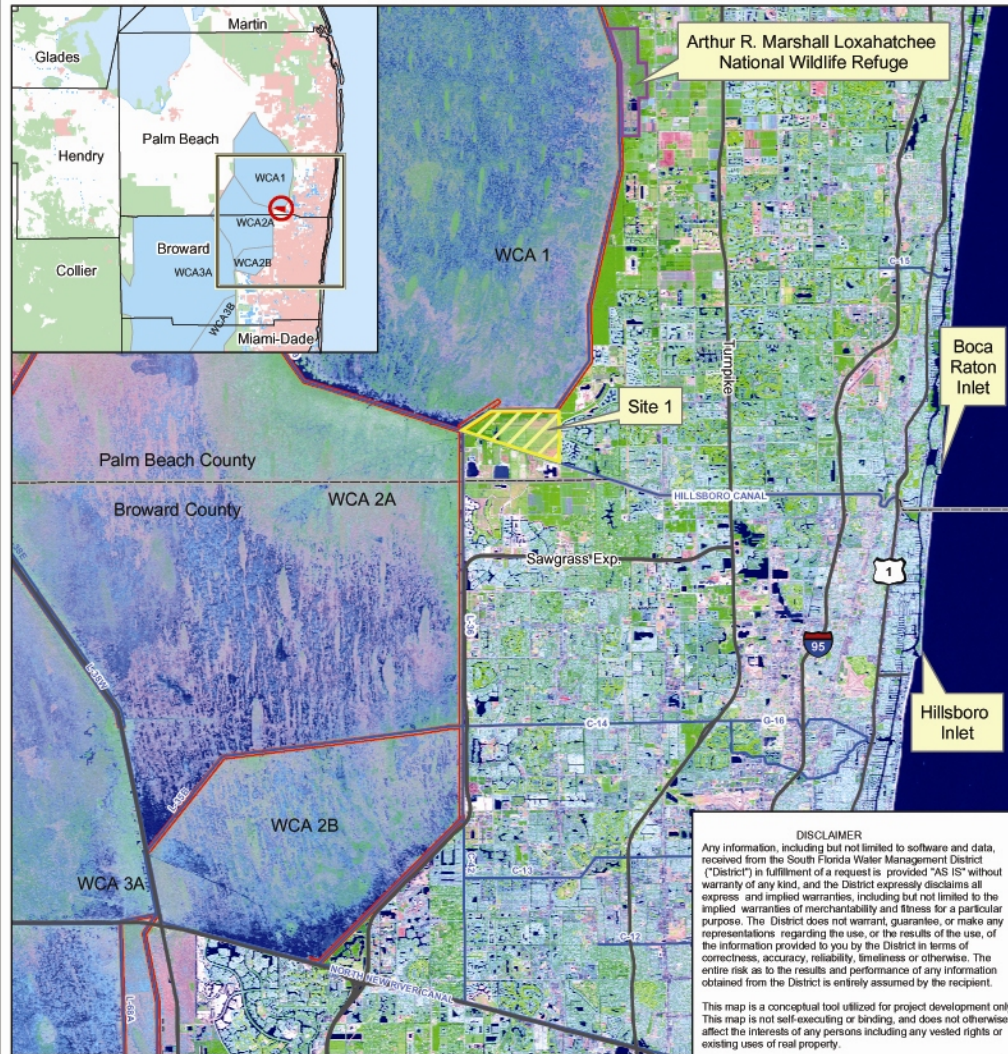
Legend

Urban Development
Wetlands

Site 1 Location
Water Conservation Areas
Arthur R. Marshall Lox. NWR

Counties
Canal
Levee
Roads

Image shown is
taken from the
2000 Thematic
Mapper Series



DISCLAIMER
Any information, including but not limited to software and data, received from the South Florida Water Management District ("District") in fulfillment of a request is provided "AS IS" without warranty of any kind, and the District expressly disclaims all express and implied warranties, including but not limited to the implied warranties of merchantability and fitness for a particular purpose. The District does not warrant, guarantee, or make any representations regarding the use, or the results of the use, of the information provided to you by the District in terms of correctness, accuracy, reliability, timeliness or otherwise. The entire risk as to the results and performance of any information obtained from the District is entirely assumed by the recipient.

This map is a conceptual tool utilized for project development only. This map is not self-executing or binding, and does not otherwise affect the interests of any persons including any vested rights or existing uses of real property.

**-CERP-
Site 1 Impoundment**

LOCATION MAP

