

FACT SHEET
KISSIMMEE RIVER FLORIDA
 Construction General (C)
 Congressional Districts: 5, 7, 9, 10, 17

1. DESCRIPTION

The Water Resources Development Act (WRDA) of 1992 authorized the Kissimmee River, Florida project. The Kissimmee Basin includes 3,000 square miles stretching from Orlando to Lake Okeechobee in central Florida. The project involves the ecosystem restoration of the historic floodplain to re-establish wetland conditions by implementing the following: modifications to the operation of the upper chain of lakes; modification of various structures; enlargement of canals 36 and 37; backfilling 22 miles of C-38; excavation of about nine miles of new river channel; removal of two water control structures and locks, floodproofing of developments around the lakes and land acquisition of over 100,000 acres.

2. FUNDING

Estimated Total Cost	\$759,315,000
Estimated Federal Cost	371,021,000
Allocation thru FY15	315,658,108
Carry In to FY16	82,989
Allocation for FY16	29,646,999
President's Budget FY17	15,778,000

3. SPONSOR

South Florida Water Management District
 3301 Gun Club Road
 West Palm Beach, Florida 33406

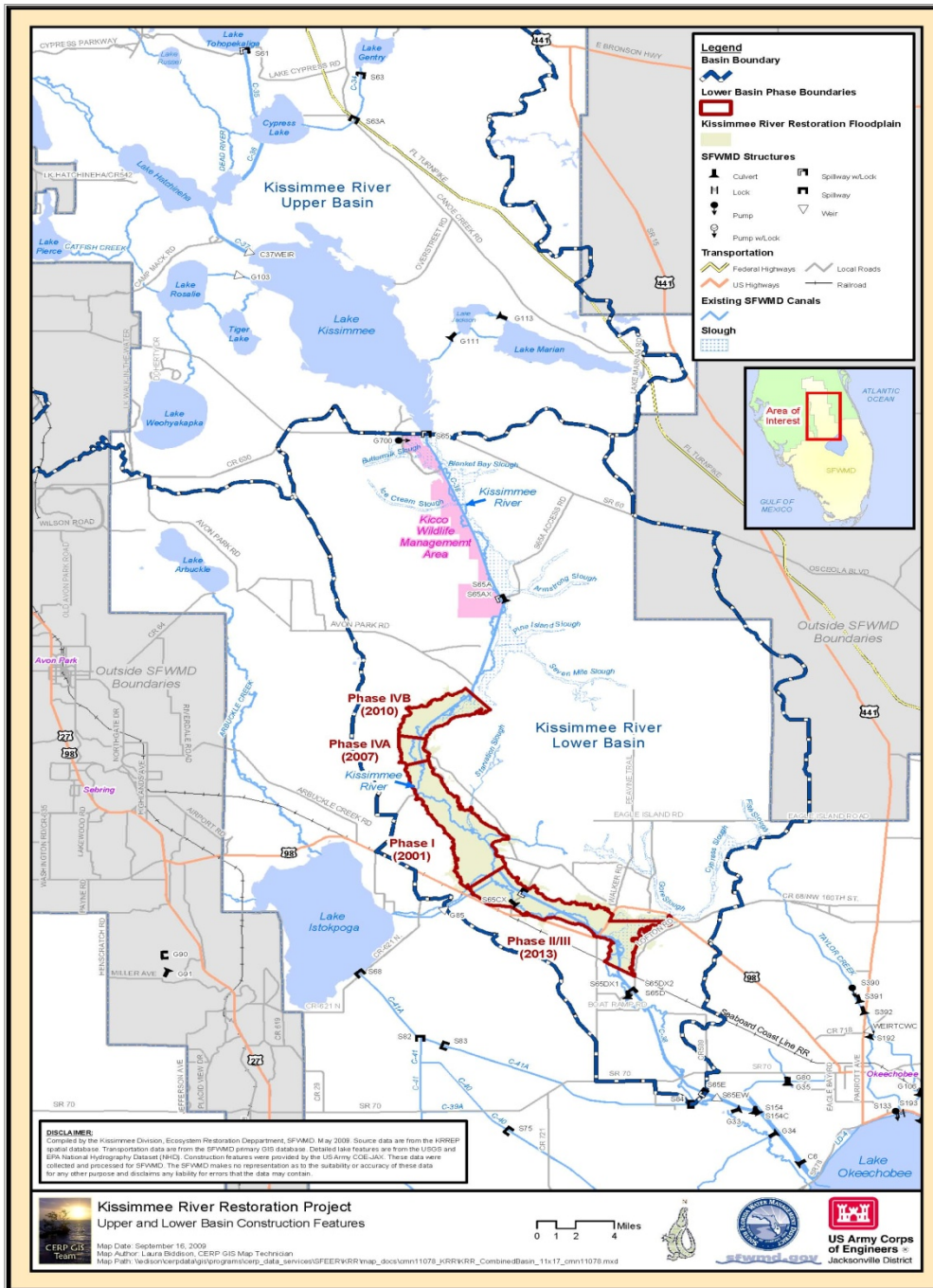
4. STATUS

The State of Florida has completed most land acquisition and much of the floodproofing work. The Corps has completed the modification of several structures necessary to support backfilling of the C-38 Canal. Backfilling of Reach 1, the first seven miles of the C-38 Canal, was completed in 2001. Backfilling of Reach 4 of C-38 was completed in two phases with Reach 4A completed in 2007 and Reach 4B completed in 2010. The response of the natural system has greatly exceeded expectations. Specifically, numerous species of ducks and wading birds, to include the Ring-necked Duck, American Avocet, and Black-necked Stilt, are now present. These species were not present during pre-construction surveys. Currently 13 of 22 miles of canal have been

backfilled, 18 of 43 miles of historic river channel have been restored, and 6,500 acres of floodplain wetlands have been restored.

Fiscal Year 2016 funds will be used to initiate the backfilling of Reach 2 in the lower basin of the Kissimmee River (Canal 38) and repair the upper basin Canal 37 embankment erosion. On-going construction efforts will include the closeout of Structure 65EX1 Spillway and the Supplemental Works at River Acres. The design of the Structure 69 Weir will commence with a construction award projected in Fiscal Year 2017.

A draft Post Authorization Change Report (PACR) will be completed in fiscal year 2016 to address activities the non-Federal sponsor performed in lieu of real estate acquisition that may have resulted in a cost savings to the project. Ultimately, the PACR will be completed to seek Congressional authorization to provide the non-Federal sponsor with in-kind credit for the work performed.



Legend

- Basin Boundary
- Lower Basin Phase Boundaries
- Kissimmee River Restoration Floodplain

SFWMD Structures

- Culvert
- Lock
- Pump
- Pump w/lock
- Spillway w/lock
- Spillway
- Weir

Transportation

- Federal Highways
- US Highways
- Local Roads
- Railroad

Existing SFWMD Canals

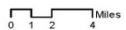
- Slough



DISCLAIMER
 Compiled by the Kissimmee Division, Ecosystem Restoration Department, SFWMD, May 2009. Source data are from the HRRFR spatial database. Transportation data are from the SFWMD primary GIS database. Detailed lake features are from the USGS and 839k National Hydrography Dataset (NHD). Construction features were provided by the US Army COE/JAC. These data were collected and processed by SFWMD. The SFWMD makes no representation as to the liability or accuracy of these data for any other purpose and disclaims any liability for errors that the data may contain.

Kissimmee River Restoration Project
 Upper and Lower Basin Construction Features

Map Date: September 16, 2009
 Map Author: Laura Siddison, CERP GIS Map Technician
 Map Path: \\edison\work\proj\gis\program\corp_data_services\GFEER\SR\map_docs\env11078_HRR\RR_Combined\Basin_11x17_corn11078.mxd



US Army Corps of Engineers
 Jacksonville District