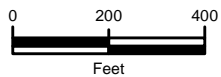


ENVIRONMENTAL SERVICES, INC.
 7220 Financial Way, Suite 100
 Jacksonville, Florida 32256
 (904) 470-2200
 (904) 470-2112 Fax
www.environmentalservicesinc.com

Project Location
National Cemetery Access Road
 Duval County, Florida

Project:	EJ11351.00
Date:	May 2015
Drwn/Chkd:	JGB/JRN
Figure:	1



Source(s): USDA Soils Survey of Duval County, FL;
NAIP Imagery (2013).

Disclaimer: The information depicted on this figure is for conceptual purposes only, serves to aid a licensed engineer or geologist in rendering professional services, and is subject to review and approval by appropriate regulatory agencies.

-- Project Centerline

NRCS Soils

- 38, Mascotte Fine Sand, 0 To 2 Percent Slopes
- 51, Pelham Fine Sand, 0 To 2 Percent Slopes
- 63, Sapelo Fine Sand, 0 To 2 Percent Slopes

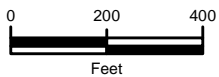
- 66, Sapelo Fine Sand, 0 To 2 Percent Slopes
- 78, Yonges Fine Sandy Loam, 0 To 2 Percent Slopes
- 79, Yulee Clay, 0 To 2 Percent Slopes, Frequently Flooded
- 82, Pelham Fine Sand, Depressional, 0 To 2 Percent Slopes
- 86, Yulee Clay, Depressional, 0 To 2 Percent Slopes



ENVIRONMENTAL SERVICES, INC.
7220 Financial Way, Suite 100
Jacksonville, Florida 32256
(904) 470-2200
(904) 470-2112 Fax
www.environmentalservicesinc.com

NRCS Soils
National Cemetery Access Road
Duval County, Florida

Project:	EJ11351.00
Date:	Apr. 2015
Drwn/Chkd:	NEE/JRN
Figure:	2A



Source(s): USDA Soils Survey of Duval County, FL;
NAIP Imagery (2013).

Disclaimer: The information depicted on this figure is for conceptual purposes only, serves to aid a licensed engineer or geologist in rendering professional services, and is subject to review and approval by appropriate regulatory agencies.

-- Project Centerline

NRCS Soils

- 38, Mascotte Fine Sand, 0 To 2 Percent Slopes
- 51, Pelham Fine Sand, 0 To 2 Percent Slopes
- 63, Sapelo Fine Sand, 0 To 2 Percent Slopes

- 66, Sapelo Fine Sand, 0 To 2 Percent Slopes
- 78, Yonges Fine Sandy Loam, 0 To 2 Percent Slopes
- 79, Yulee Clay, 0 To 2 Percent Slopes, Frequently Flooded
- 82, Pelham Fine Sand, Depressional, 0 To 2 Percent Slopes
- 86, Yulee Clay, Depressional, 0 To 2 Percent Slopes



ENVIRONMENTAL SERVICES, INC.

7220 Financial Way, Suite 100
Jacksonville, Florida 32256
(904) 470-2200
(904) 470-2112 Fax

www.environmentalservicesinc.com

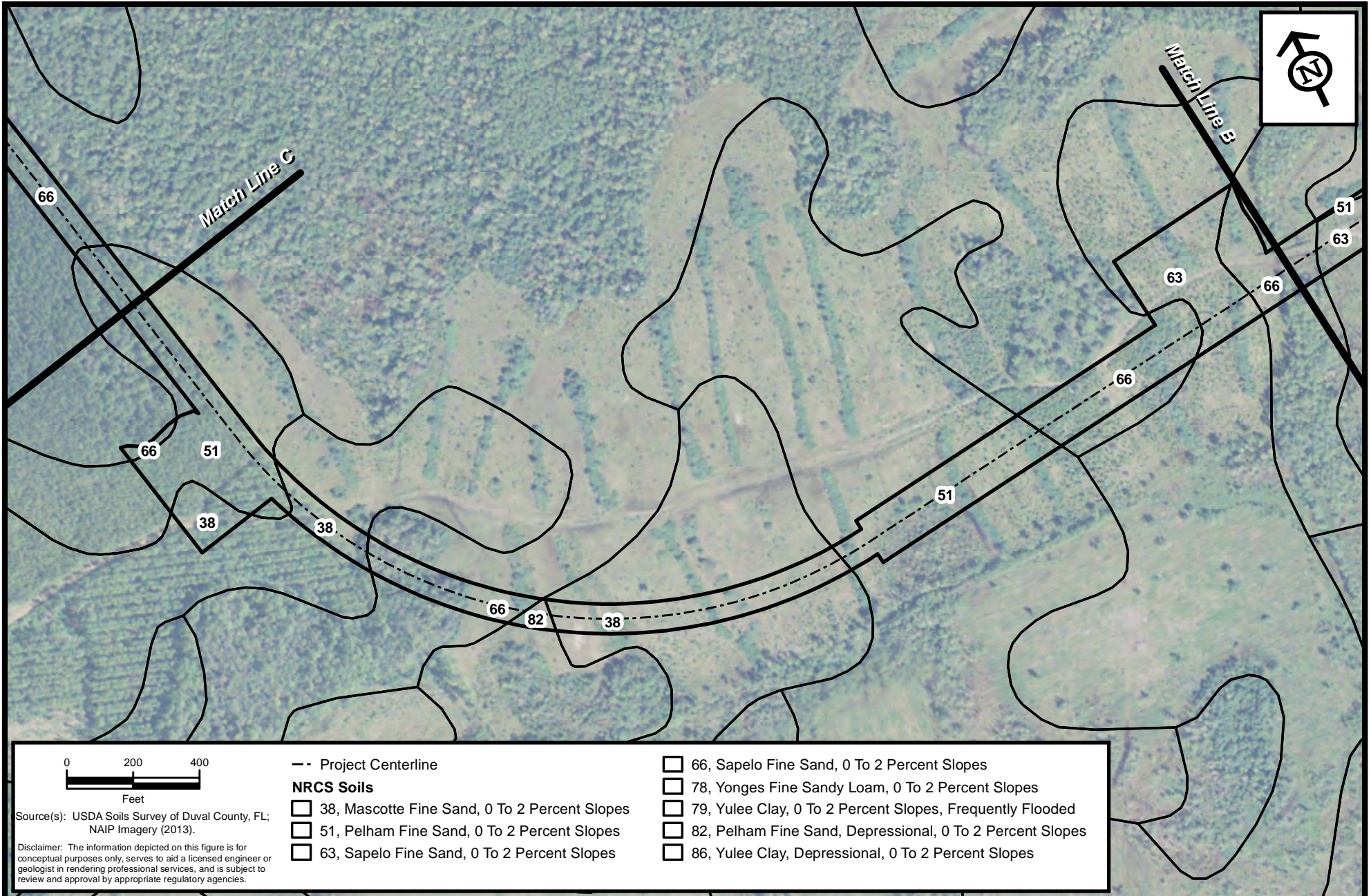
NRCS Soils
National Cemetery Access Road
Duval County, Florida

Project: EJ11351.00

Date: Apr. 2015

Drwn/Chkd: NEE/JRN

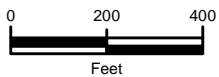
Figure: 2B



ENVIRONMENTAL SERVICES, INC.
7220 Financial Way, Suite 100
Jacksonville, Florida 32256
(904) 470-2200
(904) 470-2112 Fax
www.environmentalservicesinc.com

NRCS Soils
National Cemetery Access Road
Duval County, Florida

Project:	EJ11351.00
Date:	Apr. 2015
Drwn/Chkd:	NEE/JRN
Figure:	2C



Source(s): USDA Soils Survey of Duval County, FL;
NAIP Imagery (2013).

Disclaimer: The information depicted on this figure is for conceptual purposes only, serves to aid a licensed engineer or geologist in rendering professional services, and is subject to review and approval by appropriate regulatory agencies.

-- Project Centerline

NRCS Soils

- 38, Mascotte Fine Sand, 0 To 2 Percent Slopes
- 51, Pelham Fine Sand, 0 To 2 Percent Slopes
- 63, Sapelo Fine Sand, 0 To 2 Percent Slopes

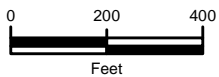
- 66, Sapelo Fine Sand, 0 To 2 Percent Slopes
- 78, Yonges Fine Sandy Loam, 0 To 2 Percent Slopes
- 79, Yulee Clay, 0 To 2 Percent Slopes, Frequently Flooded
- 82, Pelham Fine Sand, Depressional, 0 To 2 Percent Slopes
- 86, Yulee Clay, Depressional, 0 To 2 Percent Slopes



ENVIRONMENTAL SERVICES, INC.
7220 Financial Way, Suite 100
Jacksonville, Florida 32256
(904) 470-2200
(904) 470-2112 Fax
www.environmentalservicesinc.com

NRCS Soils
National Cemetery Access Road
Duval County, Florida

Project:	EJ11351.00
Date:	Apr. 2015
Drwn/Chkd:	NEE/JRN
Figure:	2D



Source(s): USDA Soils Survey of Duval County, FL;
NAIP Imagery (2013).

Disclaimer: The information depicted on this figure is for conceptual purposes only, serves to aid a licensed engineer or geologist in rendering professional services, and is subject to review and approval by appropriate regulatory agencies.

-- Project Centerline

NRCS Soils

- 38, Mascotte Fine Sand, 0 To 2 Percent Slopes
- 51, Pelham Fine Sand, 0 To 2 Percent Slopes
- 63, Sapelo Fine Sand, 0 To 2 Percent Slopes

- 66, Sapelo Fine Sand, 0 To 2 Percent Slopes
- 78, Yonges Fine Sandy Loam, 0 To 2 Percent Slopes
- 79, Yulee Clay, 0 To 2 Percent Slopes, Frequently Flooded
- 82, Pelham Fine Sand, Depressional, 0 To 2 Percent Slopes
- 86, Yulee Clay, Depressional, 0 To 2 Percent Slopes



ENVIRONMENTAL SERVICES, INC.

7220 Financial Way, Suite 100
Jacksonville, Florida 32256
(904) 470-2200
(904) 470-2112 Fax

www.environmentalservicesinc.com

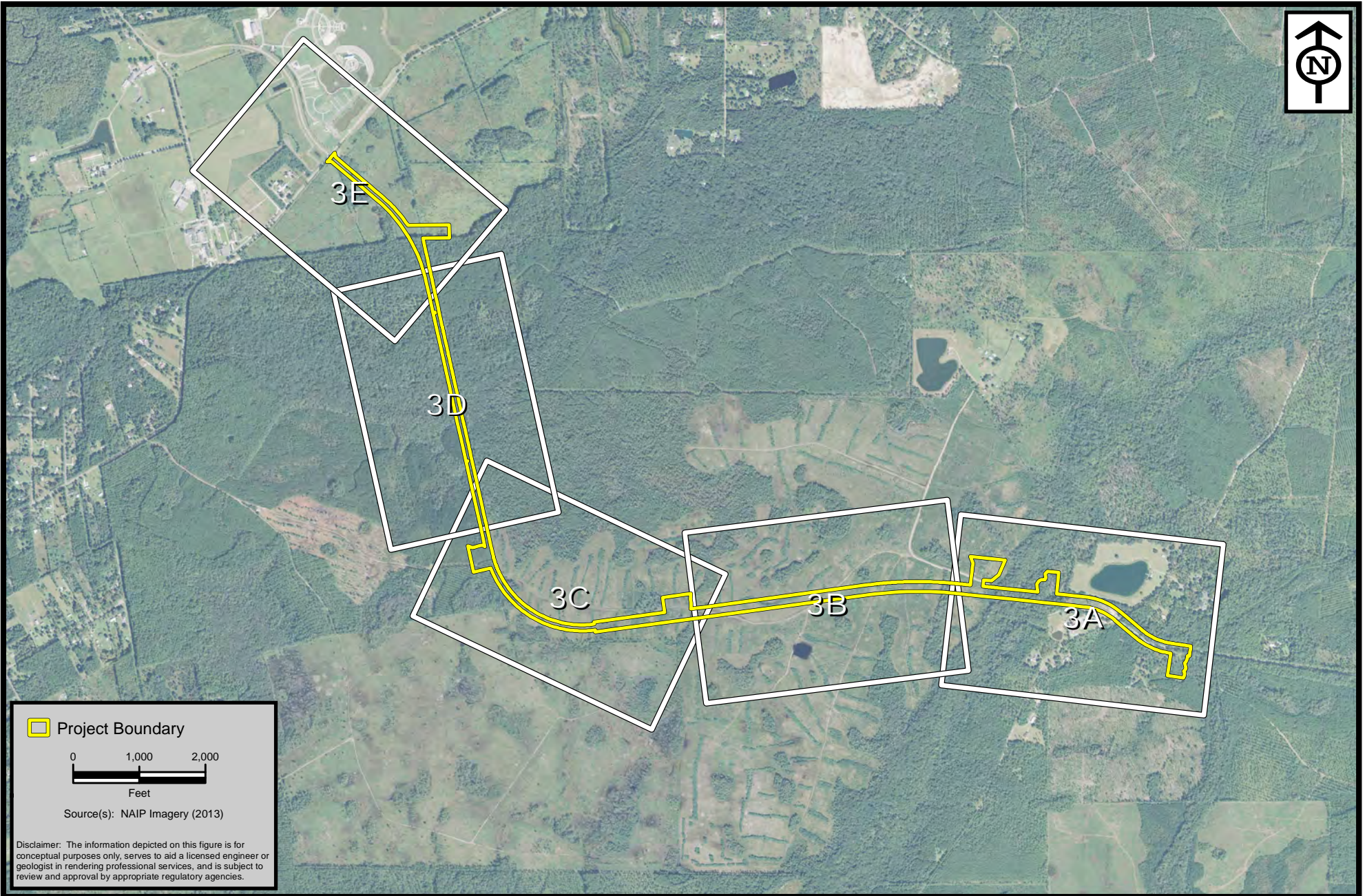
NRCS Soils
National Cemetery Access Road
Duval County, Florida


Project: EJ11351.00

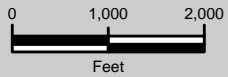
Date: Apr. 2015

Drwn/Chkd: NEE/JRN

Figure: 2E



 Project Boundary



Source(s): NAIP Imagery (2013)

Disclaimer: The information depicted on this figure is for conceptual purposes only, serves to aid a licensed engineer or geologist in rendering professional services, and is subject to review and approval by appropriate regulatory agencies.



ENVIRONMENTAL SERVICES, INC.

7220 Financial Way, Suite 100
Jacksonville, Florida 32256
(904) 470-2200
(904) 470-2112 Fax

www.environmentalservicesinc.com

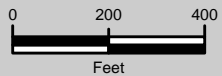
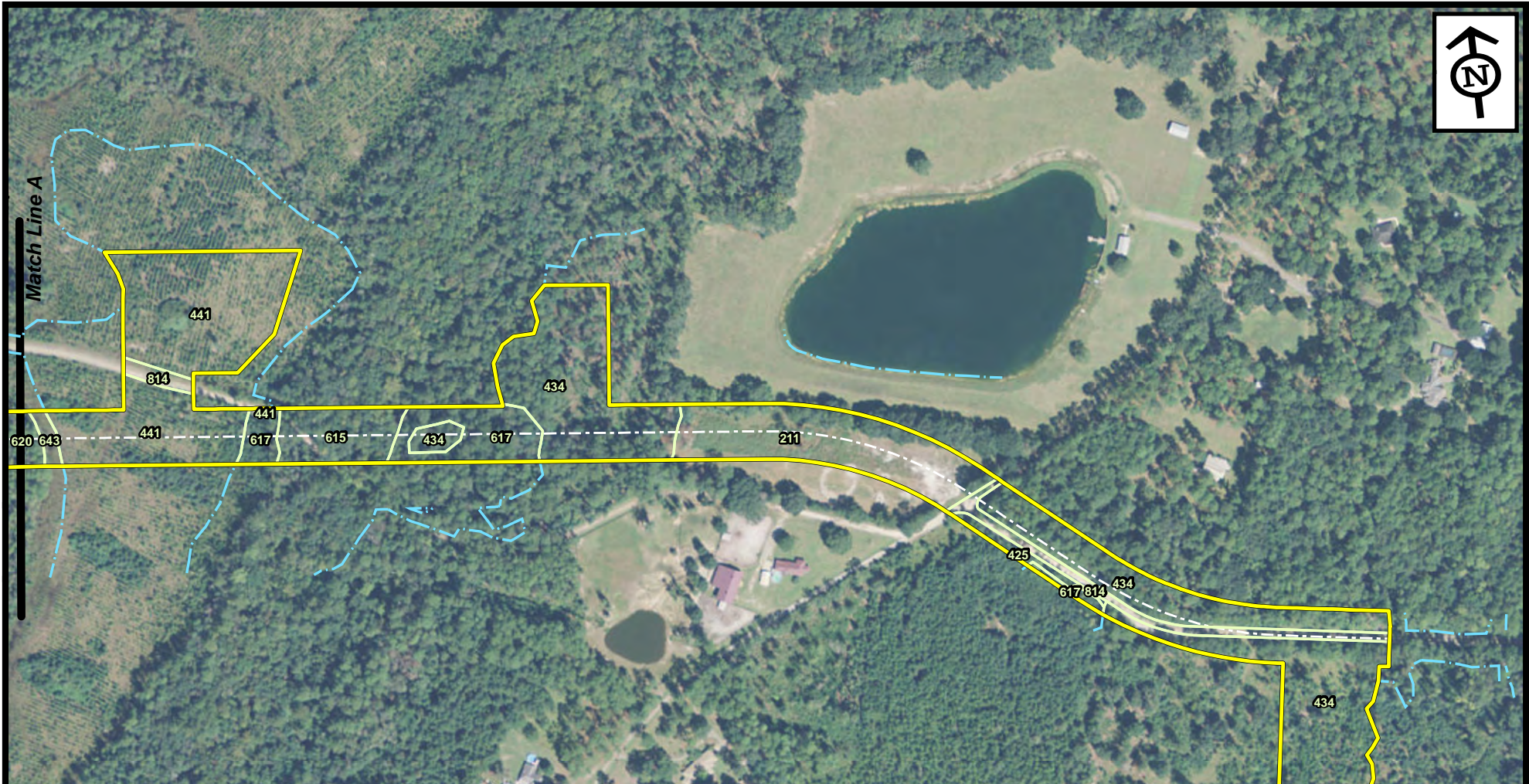
Existing Site Conditions - Key
National Cemetery Access Road
Duval County, Florida

Project: EJ11351.00

Date: May 2015

Drwn/Chkd: MR/JRN

Figure: 3



Source(s): Florida Land Use, Cover and Forms Classification System (FDOT); ESRI World Imagery Basemap

Disclaimer: The information depicted on this figure is for conceptual purposes only, serves to aid a licensed engineer or geologist in rendering professional services, and is subject to review and approval by appropriate regulatory agencies.

- | | |
|---|---|
| <ul style="list-style-type: none"> - - - Wetland Limits FLUCFCS 211 - Improved Pastures (8.86 ac.±) 414 - Pine - Mesic Oak (1.41 ac.±) 425 - Temperate Hardwood (0.24 ac.±) 434 - Hardwood - Conifer Mixed (8.49 ac.±) 441 - Coniferous Plantation (31.18 ac.±) 441w - Wet Coniferous Plantation (0.62 ac.±) | <ul style="list-style-type: none"> 511 - Upland Cut Ditches (0.10 ac.±) 615 - Stream and Lake Swamps (Bottomland) (1.10 ac.±) 616 - Inland Ponds and Sloughs (1.26 ac.±) 617 - Mixed Wetland Hardwoods (7.06 ac.±) 620 - Wetland Coniferous Forests (2.18 ac.±) 621 - Cypress (0.64 ac.±) 643 - Wet Prairies (0.96 ac.±) 814 - Roads and Highways (0.91 ac.±) |
|---|---|

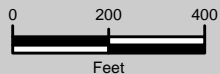
CNES/Airbus DS, USDA, USGS, AEX
er Community



ENVIRONMENTAL SERVICES, INC.
7220 Financial Way, Suite 100
Jacksonville, Florida 32256
(904) 470-2200
(904) 470-2112 Fax
www.environmentalservicesinc.com

Existing Site Conditions
National Cemetery Access Road
Duval County, Florida

Project:	EJ11351.00
Date:	May 2015
Drwn/Chkd:	MR/JRN
Figure:	3A



Source(s): Florida Land Use, Cover and Forms Classification System (FDOT); ESRI World Imagery Basemap

Disclaimer: The information depicted on this figure is for conceptual purposes only, serves to aid a licensed engineer or geologist in rendering professional services, and is subject to review and approval by appropriate regulatory agencies.

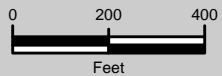
<p>Wetland Limits</p> <p>FLUCFCS</p> <ul style="list-style-type: none"> 211 - Improved Pastures (8.86 ac.±) 414 - Pine - Mesic Oak (1.41 ac.±) 425 - Temperate Hardwood (0.24 ac.±) 434 - Hardwood - Conifer Mixed (8.49 ac.±) 441 - Coniferous Plantation (31.18 ac.±) 441w - Wet Coniferous Plantation (0.62 ac.±) 	<ul style="list-style-type: none"> 511 - Upland Cut Ditches (0.10 ac.±) 615 - Stream and Lake Swamps (Bottomland) (1.10 ac.±) 616 - Inland Ponds and Sloughs (1.26 ac.±) 617 - Mixed Wetland Hardwoods (7.06 ac.±) 620 - Wetland Coniferous Forests (2.18 ac.±) 621 - Cypress (0.64 ac.±) 643 - Wet Prairies (0.96 ac.±) 814 - Roads and Highways (0.91 ac.±)
---	---



ENVIRONMENTAL SERVICES, INC.
 7220 Financial Way, Suite 100
 Jacksonville, Florida 32256
 (904) 470-2200
 (904) 470-2112 Fax
www.environmentalservicesinc.com

Existing Site Conditions
National Cemetery Access Road
 Duval County, Florida

Project:	EJ11351.00
Date:	May 2015
Drwn/Chkd:	MR/JRN
Figure:	3B



Source(s): Florida Land Use, Cover and Forms Classification System (FDOT); ESRI World Imagery Basemap

Disclaimer: The information depicted on this figure is for conceptual purposes only, serves to aid a licensed engineer or geologist in rendering professional services, and is subject to review and approval by appropriate regulatory agencies.

- | | |
|---|---|
| <ul style="list-style-type: none"> - - - Wetland Limits FLUCFCS 211 - Improved Pastures (8.86 ac.±) 414 - Pine - Mesic Oak (1.41 ac.±) 425 - Temperate Hardwood (0.24 ac.±) 434 - Hardwood - Conifer Mixed (8.49 ac.±) 441 - Coniferous Plantation (31.18 ac.±) 441w - Wet Coniferous Plantation (0.62 ac.±) | <ul style="list-style-type: none"> 511 - Upland Cut Ditches (0.10 ac.±) 615 - Stream and Lake Swamps (Bottomland) (1.10 ac.±) 616 - Inland Ponds and Sloughs (1.26 ac.±) 617 - Mixed Wetland Hardwoods (7.06 ac.±) 620 - Wetland Coniferous Forests (2.18 ac.±) 621 - Cypress (0.64 ac.±) 643 - Wet Prairies (0.96 ac.±) 814 - Roads and Highways (0.91 ac.±) |
|---|---|

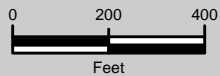
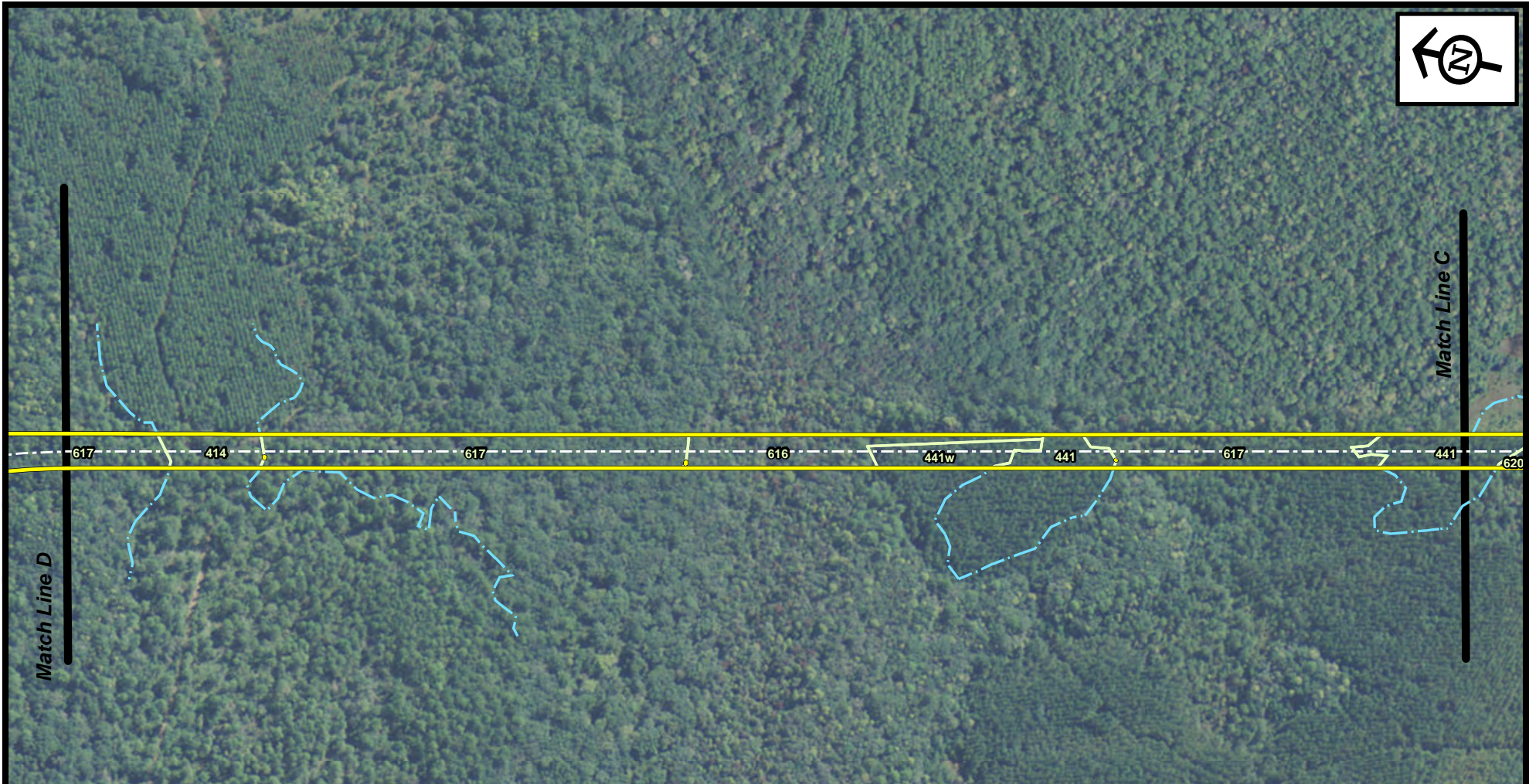
CNES/Airbus DS, USDA
er Community



ENVIRONMENTAL SERVICES, INC.
7220 Financial Way, Suite 100
Jacksonville, Florida 32256
(904) 470-2200
(904) 470-2112 Fax
www.environmentalservicesinc.com

Existing Site Conditions
National Cemetery Access Road
Duval County, Florida

Project:	EJ11351.00
Date:	May 2015
Drwn/Chkd:	MR/JRN
Figure:	3C



Source(s): Florida Land Use, Cover and Forms Classification System (FDOT); ESRI World Imagery Basemap

Disclaimer: The information depicted on this figure is for conceptual purposes only, serves to aid a licensed engineer or geologist in rendering professional services, and is subject to review and approval by appropriate regulatory agencies.

- | | |
|---|---|
| <ul style="list-style-type: none"> - - - Wetland Limits FLUCFCS 211 - Improved Pastures (8.86 ac.±) 414 - Pine - Mesic Oak (1.41 ac.±) 425 - Temperate Hardwood (0.24 ac.±) 434 - Hardwood - Conifer Mixed (8.49 ac.±) 441 - Coniferous Plantation (31.18 ac.±) 441w - Wet Coniferous Plantation (0.62 ac.±) | <ul style="list-style-type: none"> 511 - Upland Cut Ditches (0.10 ac.±) 615 - Stream and Lake Swamps (Bottomland) (1.10 ac.±) 616 - Inland Ponds and Sloughs (1.26 ac.±) 617 - Mixed Wetland Hardwoods (7.06 ac.±) 620 - Wetland Coniferous Forests (2.18 ac.±) 621 - Cypress (0.64 ac.±) 643 - Wet Prairies (0.96 ac.±) 814 - Roads and Highways (0.91 ac.±) |
|---|---|

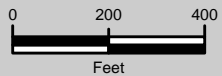
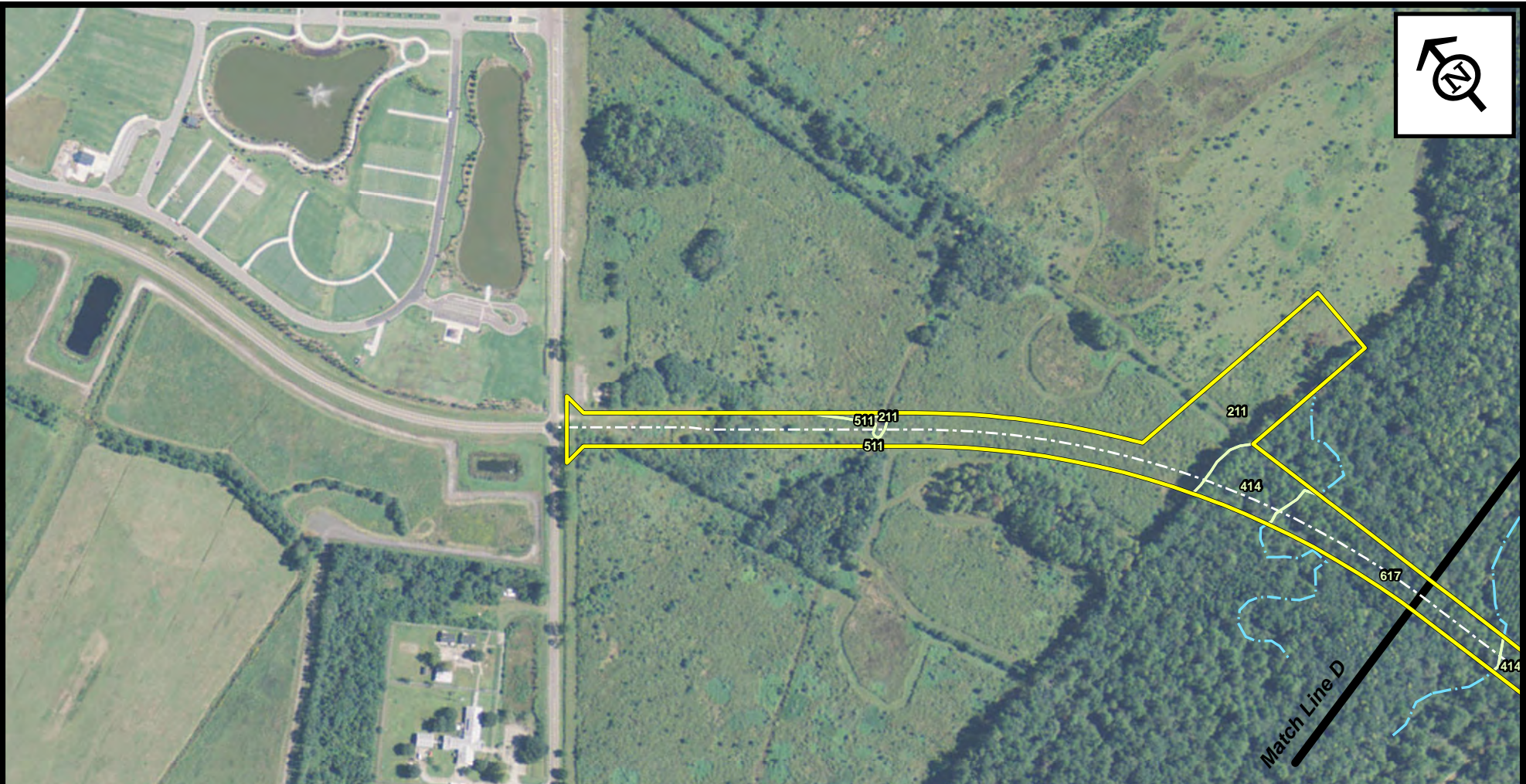
CNES/Airbus DS, USDA
er Community



ENVIRONMENTAL SERVICES, INC.
7220 Financial Way, Suite 100
Jacksonville, Florida 32256
(904) 470-2200
(904) 470-2112 Fax
www.environmentalservicesinc.com

Existing Site Conditions
National Cemetery Access Road
Duval County, Florida

Project:	EJ11351.00
Date:	May 2015
Drwn/Chkd:	MR/JRN
Figure:	3D



Source(s): Florida Land Use, Cover and Forms Classification System (FDOT); ESRI World Imagery Basemap

Disclaimer: The information depicted on this figure is for conceptual purposes only, serves to aid a licensed engineer or geologist in rendering professional services, and is subject to review and approval by appropriate regulatory agencies.

- Wetland Limits
- FLUCFCS**
- 211 - Improved Pastures (8.86 ac.±)
- 414 - Pine - Mesic Oak (1.41 ac.±)
- 425 - Temperate Hardwood (0.24 ac.±)
- 434 - Hardwood - Conifer Mixed (8.49 ac.±)
- 441 - Coniferous Plantation (31.18 ac.±)
- 441w - Wet Coniferous Plantation (0.62 ac.±)
- 511 - Upland Cut Ditches (0.10 ac.±)
- 615 - Stream and Lake Swamps (Bottomland) (1.10 ac.±)
- 616 - Inland Ponds and Sloughs (1.26 ac.±)
- 617 - Mixed Wetland Hardwoods (7.06 ac.±)
- 620 - Wetland Coniferous Forests (2.18 ac.±)
- 621 - Cypress (0.64 ac.±)
- 643 - Wet Prairies (0.96 ac.±)
- 814 - Roads and Highways (0.91 ac.±)

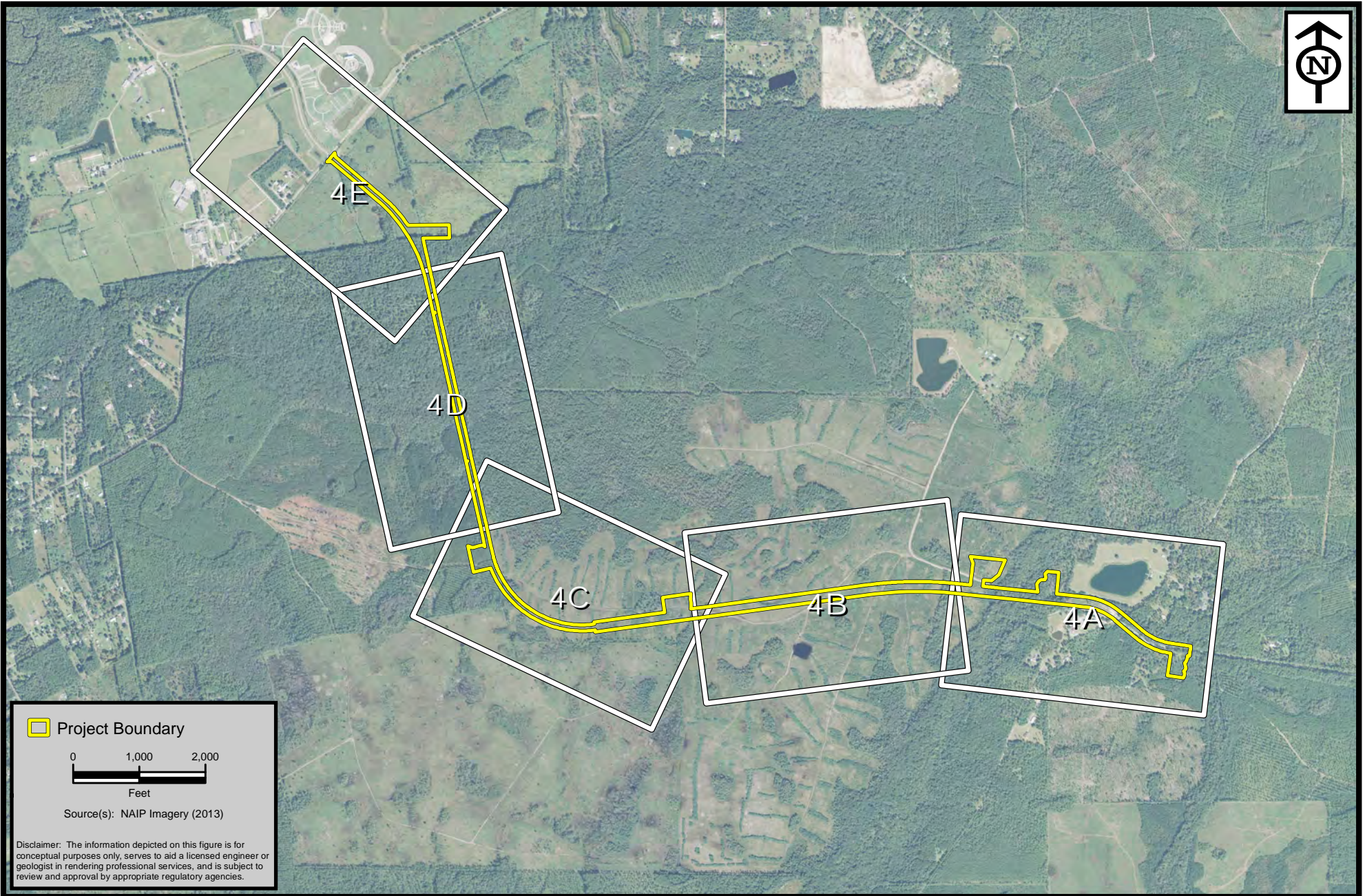
CNES/Airbus DS, USF
er Community




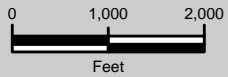
ENVIRONMENTAL SERVICES, INC.
7220 Financial Way, Suite 100
Jacksonville, Florida 32256
(904) 470-2200
(904) 470-2112 Fax
www.environmentalservicesinc.com

Existing Site Conditions
National Cemetery Access Road
Duval County, Florida

Project:	EJ11351.00
Date:	May 2015
Drwn/Chkd:	MR/JRN
Figure:	3E



 Project Boundary



Source(s): NAIP Imagery (2013)

Disclaimer: The information depicted on this figure is for conceptual purposes only, serves to aid a licensed engineer or geologist in rendering professional services, and is subject to review and approval by appropriate regulatory agencies.



ENVIRONMENTAL SERVICES, INC.

7220 Financial Way, Suite 100
Jacksonville, Florida 32256
(904) 470-2200
(904) 470-2112 Fax

www.environmentalservicesinc.com

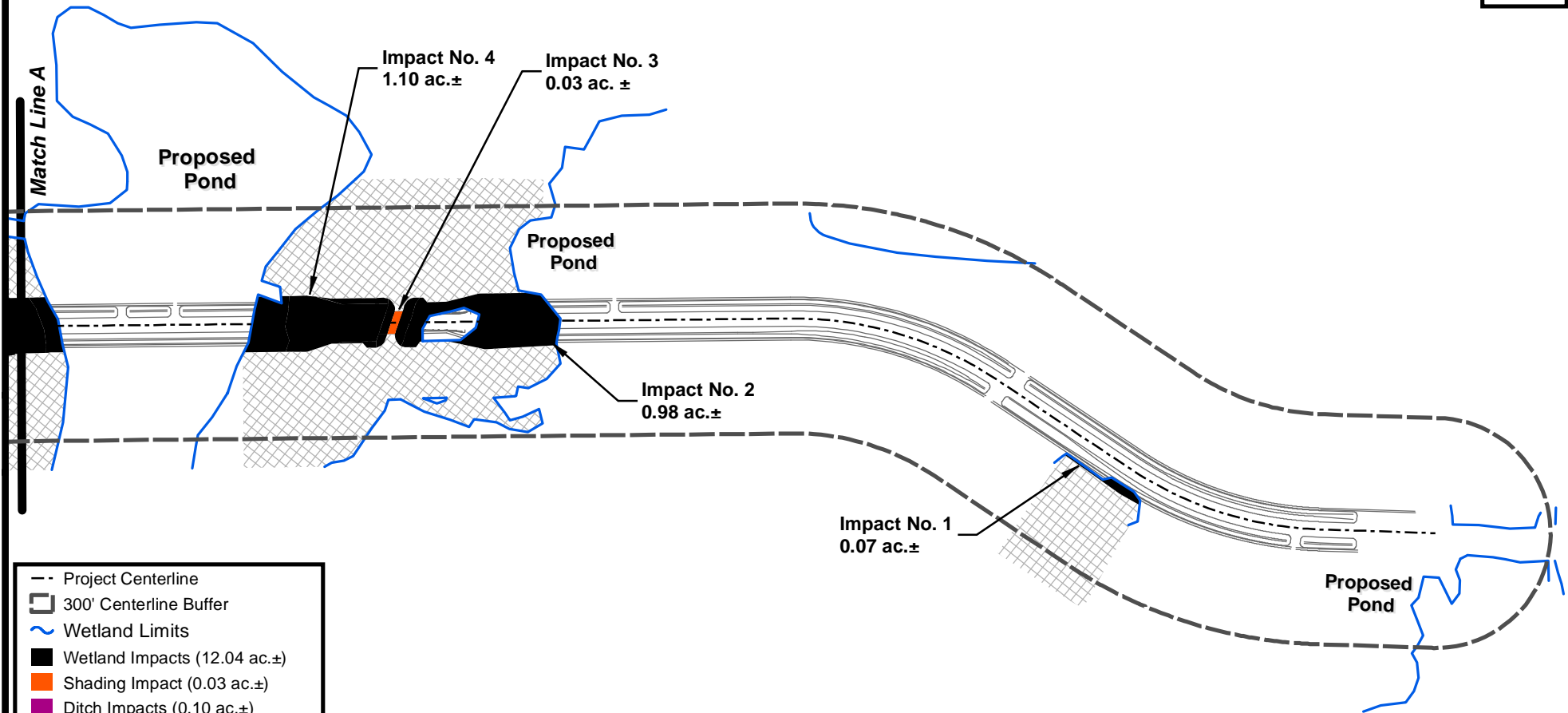
Proposed Site Conditions - Key
National Cemetery Access Road
Duval County, Florida

Project: EJ11351.00

Date: May 2015

Drwn/Chkd: MR/JRN

Figure: 4



- Project Centerline
- ▭ 300' Centerline Buffer
- ~ Wetland Limits
- Wetland Impacts (12.04 ac.±)
- Shading Impact (0.03 ac.±)
- Ditch Impacts (0.10 ac.±)
- ▨ Secondary Impacts (66.14 ac.±)

0 200 400
Feet

Source(s): England - Thims & Miller, Inc. (ETM)

Disclaimer: The information depicted on this figure is for conceptual purposes only, serves to aid a licensed engineer or geologist in rendering professional services, and is subject to review and approval by appropriate regulatory agencies.



ENVIRONMENTAL SERVICES, INC.
 7220 Financial Way, Suite 100
 Jacksonville, Florida 32256
 (904) 470-2200
 (904) 470-2112 Fax
www.environmentalservicesinc.com

Proposed Site Conditions
National Cemetery Access Road
 Duval County, Florida

Project:	EJ11351.00
Date:	Apr. 2015
Drwn/Chkd:	NEE/JRN
Figure:	4A



Match Line B

Match Line A

Impact No. 5
0.89 ac.±

- Project Centerline
- ▭ 300' Centerline Buffer
- ~ Wetland Limits
- Wetland Impacts (12.04 ac.±)
- Shading Impact (0.03 ac.±)
- Ditch Impacts (0.10 ac.±)
- ▨ Secondary Impacts (66.14 ac.±)

0 200 400
Feet

Source(s): England - Thims & Miller, Inc. (ETM)

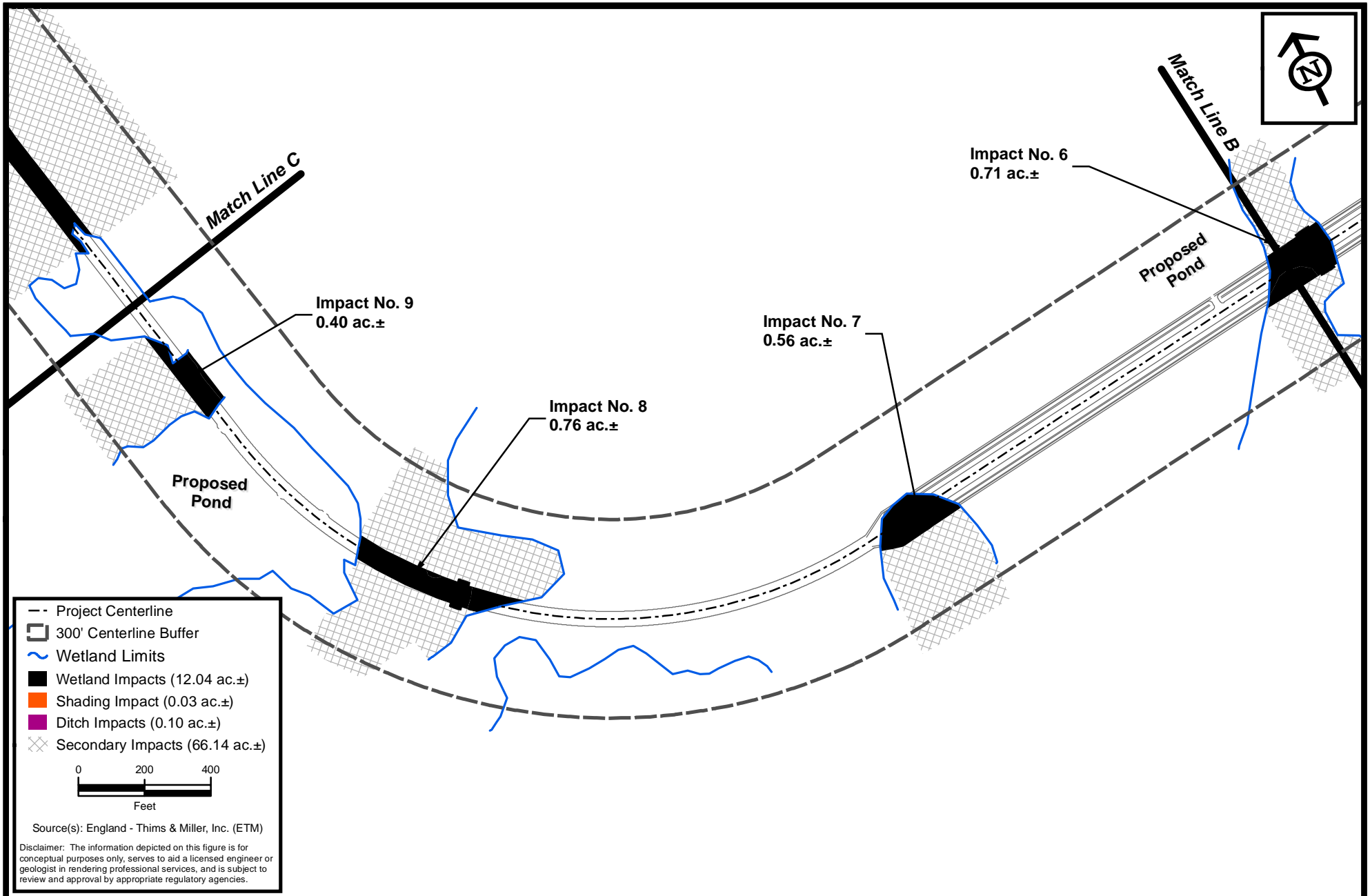
Disclaimer: The information depicted on this figure is for conceptual purposes only, serves to aid a licensed engineer or geologist in rendering professional services, and is subject to review and approval by appropriate regulatory agencies.



ENVIRONMENTAL SERVICES, INC.
7220 Financial Way, Suite 100
Jacksonville, Florida 32256
(904) 470-2200
(904) 470-2112 Fax
www.environmentalservicesinc.com

Proposed Site Conditions
National Cemetery Access Road
Duval County, Florida

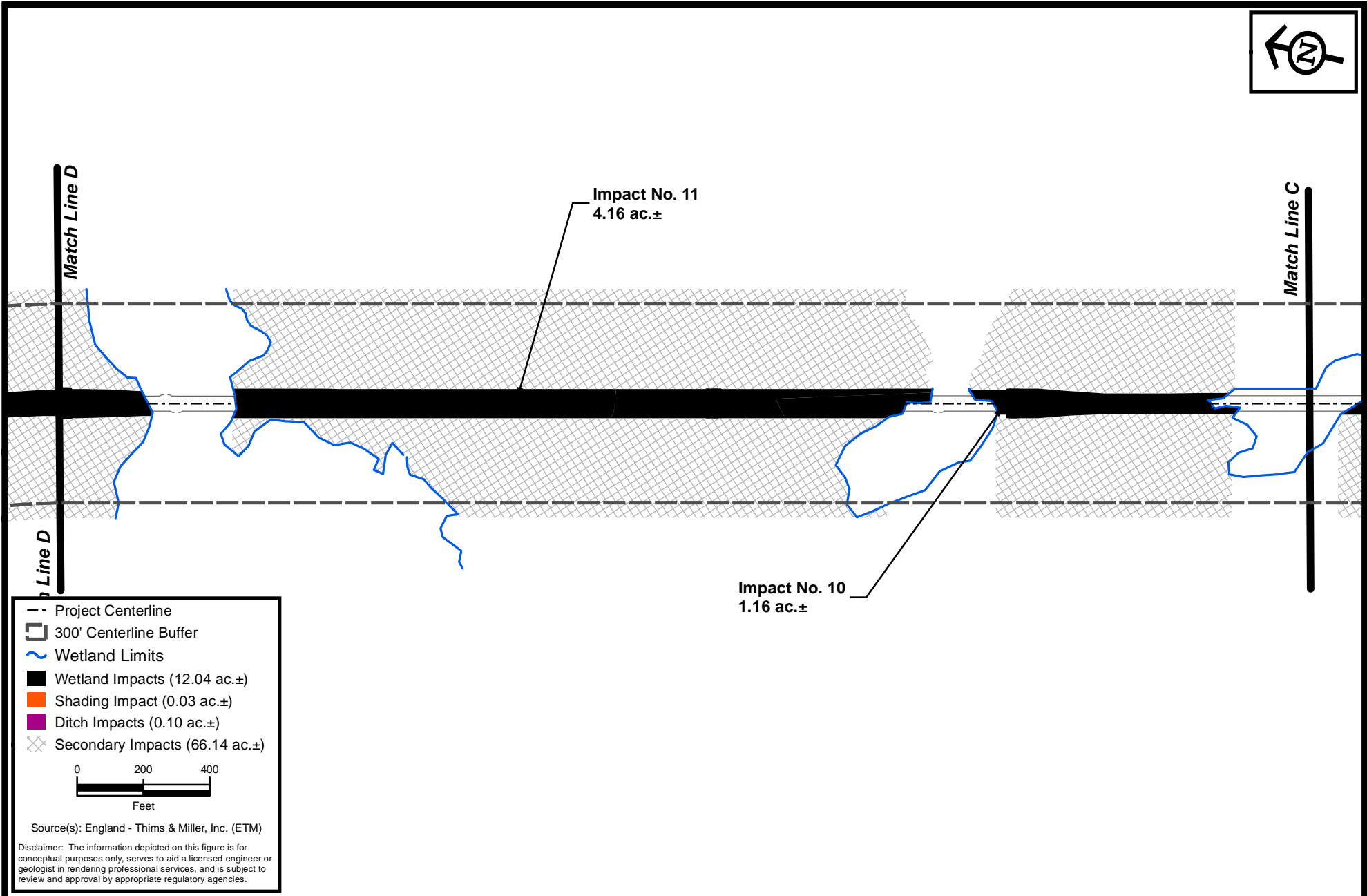
Project:	EJ11351.00
Date:	Apr. 2015
Drwn/Chkd:	NEE/JRN
Figure:	4B



ENVIRONMENTAL SERVICES, INC.
 7220 Financial Way, Suite 100
 Jacksonville, Florida 32256
 (904) 470-2200
 (904) 470-2112 Fax
www.environmentalservicesinc.com

Proposed Site Conditions
National Cemetery Access Road
 Duval County, Florida

Project:	EJ11351.00
Date:	Apr. 2015
Drwn/Chkd:	NEE/JRN
Figure:	4C



- - - Project Centerline
 [Hatched Box] 300' Centerline Buffer
 ~ Wetland Limits
 [Black Box] Wetland Impacts (12.04 ac.±)
 [Orange Box] Shading Impact (0.03 ac.±)
 [Purple Box] Ditch Impacts (0.10 ac.±)
 [Cross-hatched Box] Secondary Impacts (66.14 ac.±)

0 200 400
Feet

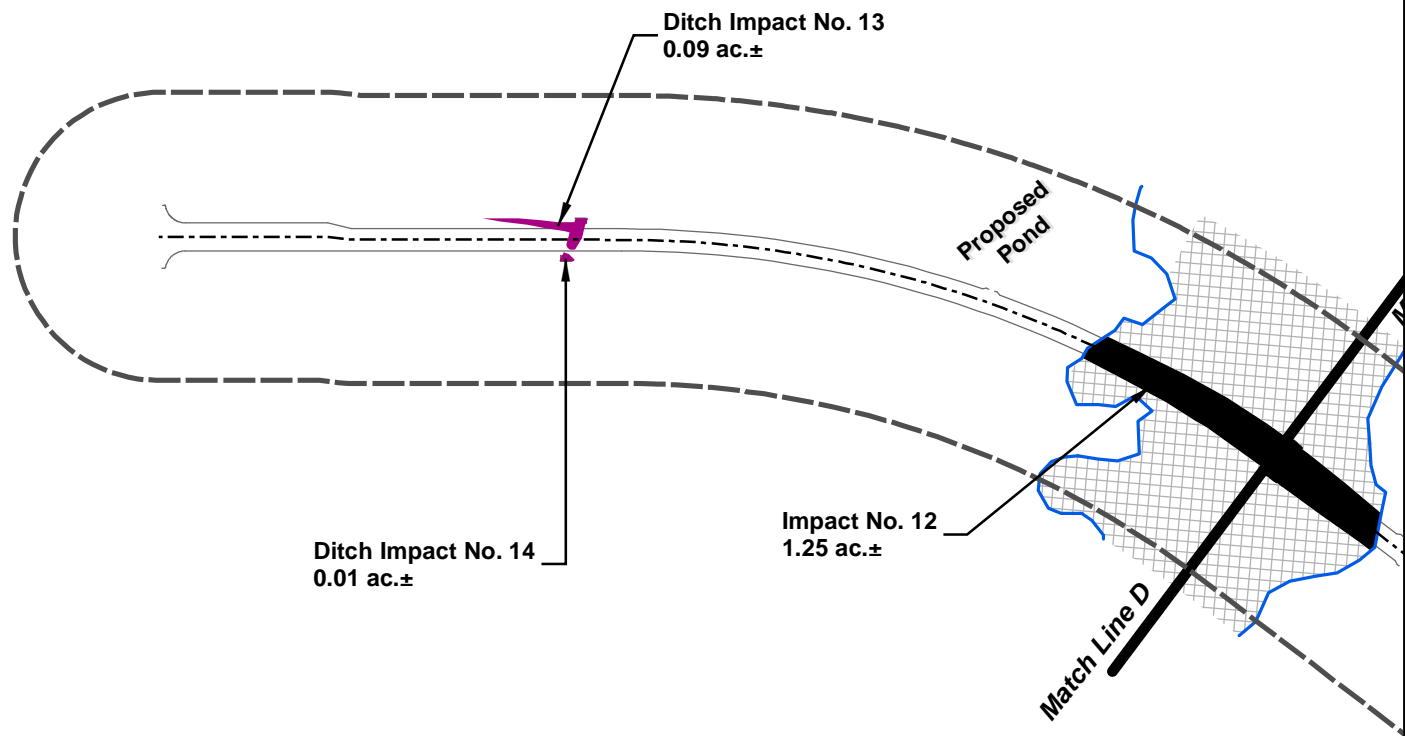
Source(s): England - Thims & Miller, Inc. (ETM)

Disclaimer: The information depicted on this figure is for conceptual purposes only, serves to aid a licensed engineer or geologist in rendering professional services, and is subject to review and approval by appropriate regulatory agencies.

ENVIRONMENTAL SERVICES, INC.
 7220 Financial Way, Suite 100
 Jacksonville, Florida 32256
 (904) 470-2200
 (904) 470-2112 Fax
 www.environmentalservicesinc.com

Proposed Site Conditions
National Cemetery Access Road
 Duval County, Florida

Project:	EJ11351.00
Date:	Apr. 2015
Drwn/Chkd:	NEE/JRN
Figure:	4D



--- Project Centerline
 □ 300' Centerline Buffer
 ~ Wetland Limits
 ■ Wetland Impacts (12.04 ac.±)
 ■ Shading Impact (0.03 ac.±)
 ■ Ditch Impacts (0.10 ac.±)
 ▨ Secondary Impacts (66.14 ac.±)

0 200 400
 Feet

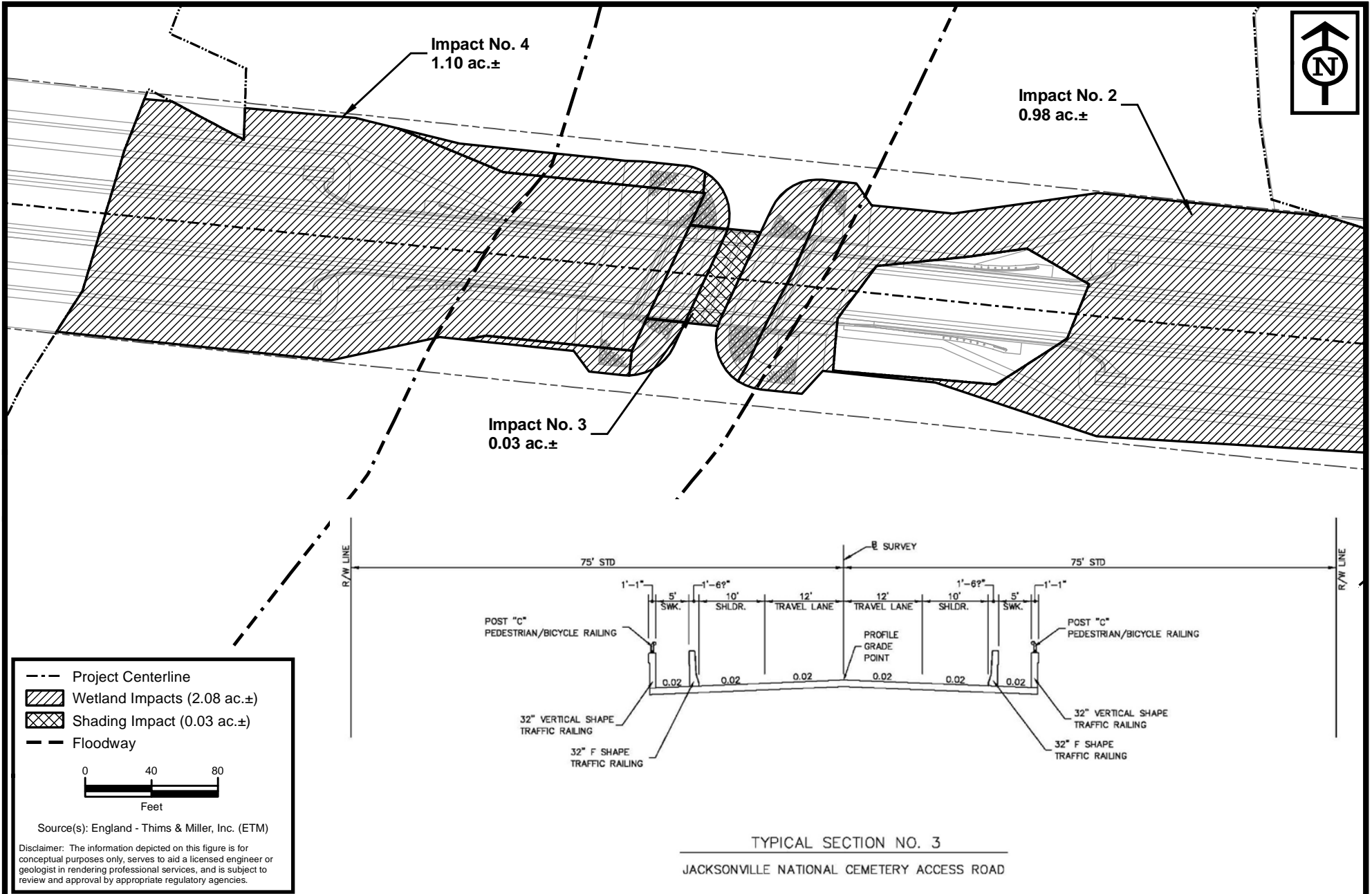
Source(s): England - Thims & Miller, Inc. (ETM)

Disclaimer: The information depicted on this figure is for conceptual purposes only, serves to aid a licensed engineer or geologist in rendering professional services, and is subject to review and approval by appropriate regulatory agencies.

ENVIRONMENTAL SERVICES, INC.
 7220 Financial Way, Suite 100
 Jacksonville, Florida 32256
 (904) 470-2200
 (904) 470-2112 Fax
 www.environmentalservicesinc.com

Proposed Site Conditions
National Cemetery Access Road
 Duval County, Florida

Project:	EJ11351.00
Date:	Apr. 2015
Drwn/Chkd:	NEE/JRN
Figure:	4E



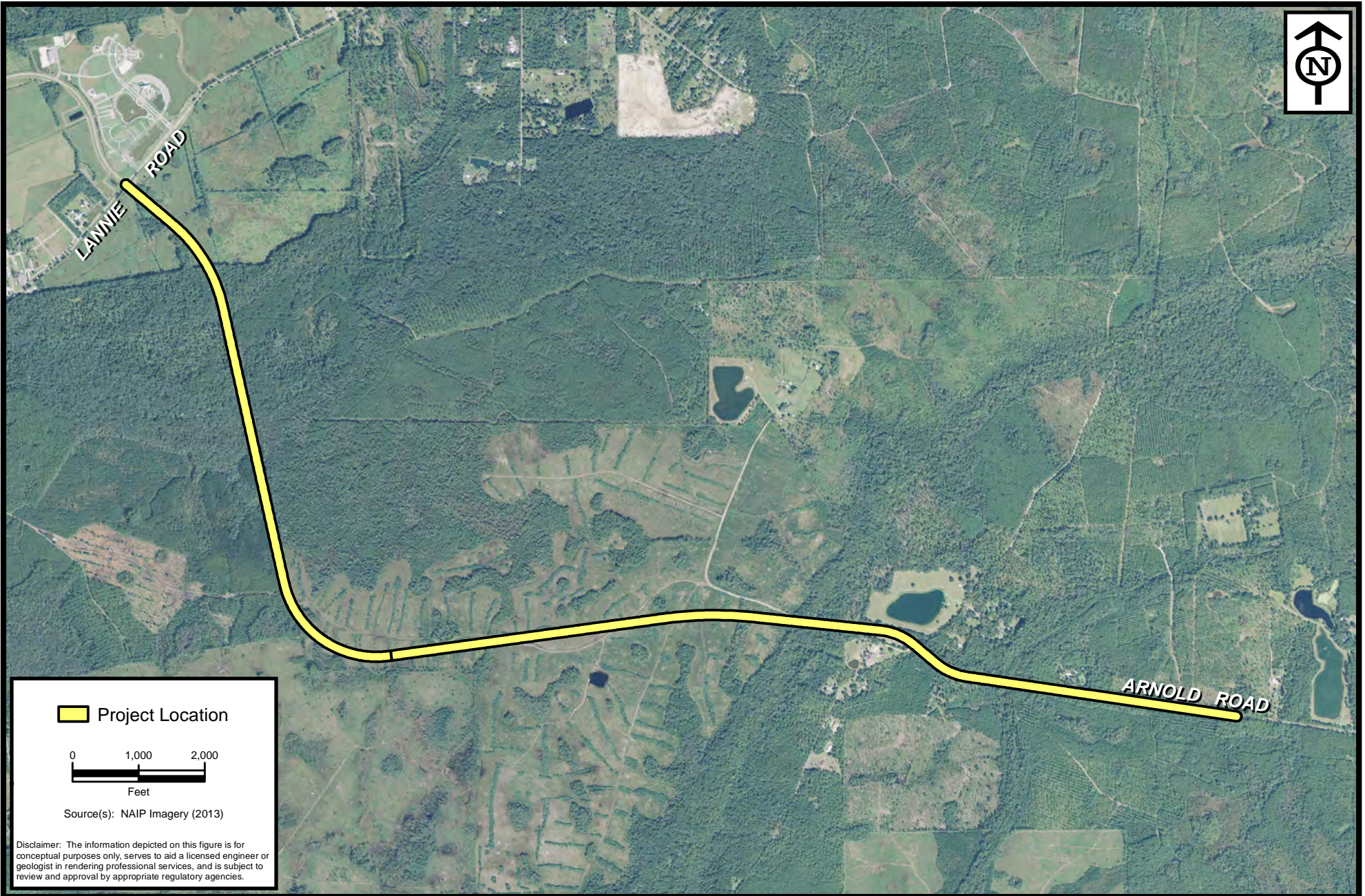
TYPICAL SECTION NO. 3
 JACKSONVILLE NATIONAL CEMETERY ACCESS ROAD



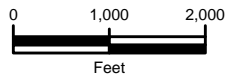
ENVIRONMENTAL SERVICES, INC.
 7220 Financial Way, Suite 100
 Jacksonville, Florida 32256
 (904) 470-2200
 (904) 470-2112 Fax
 www.environmentalservicesinc.com

Bridge Details
National Cemetery Access Road
 Duval County, Florida

Project:	EJ11351.00
Date:	Apr. 2015
Drwn/Chkd:	NEE/JRN
Figure:	5



 Project Location



Source(s): NAIP Imagery (2013)

Disclaimer: The information depicted on this figure is for conceptual purposes only, serves to aid a licensed engineer or geologist in rendering professional services, and is subject to review and approval by appropriate regulatory agencies.



ENVIRONMENTAL SERVICES, INC.
7220 Financial Way, Suite 100
Jacksonville, Florida 32256
(904) 470-2200
(904) 470-2112 Fax
www.environmentalservicesinc.com

Aerial Photograph
National Cemetery Access Road
Duval County, Florida

Project:	EJ11351.00
Date:	Apr. 2015
Drwn/Chkd:	JGB/JRN
Figure:	6