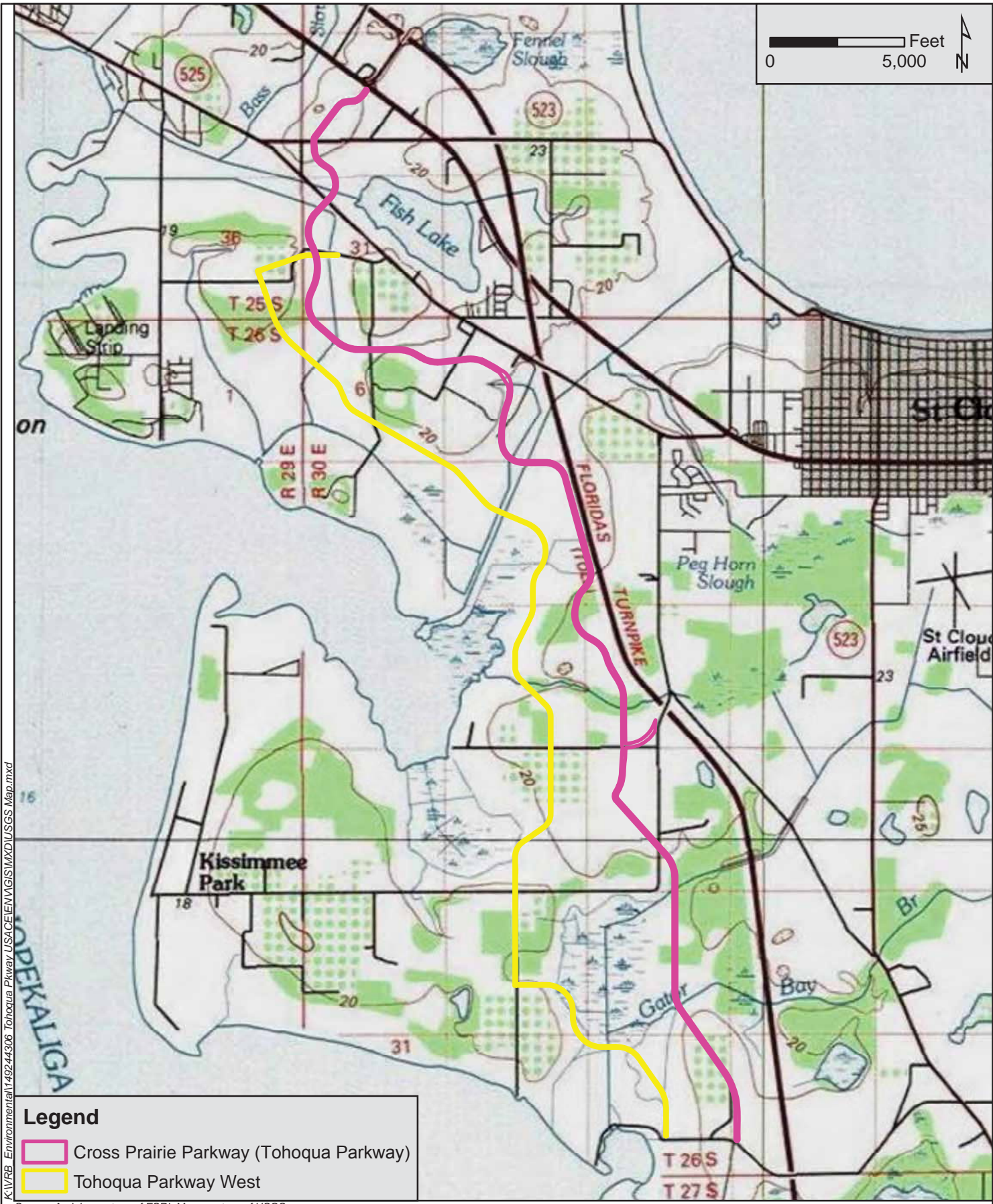


K:\IVRB_Environmental\149244306 Tohoqua Pkwy USACE\ENV\GIS\MXD\Figure 1 Location Map.mxd



Project Location Map
Cross Prairie Parkway (Tohoqua Parkway) and Tohoqua Parkway West
From US-192 to Friar's Cove Road
Osceola County, FL

1 inch = 6,667 feet	PROJECT NUMBER: 149244306	NOVEMBER 2016	FIGURE 1
---------------------	---------------------------	---------------	----------



K:\IVRB_Environmental\149244306 Tohoqua Pkway\USACE\ENV\GIS\MXD\USGS Map.mxd



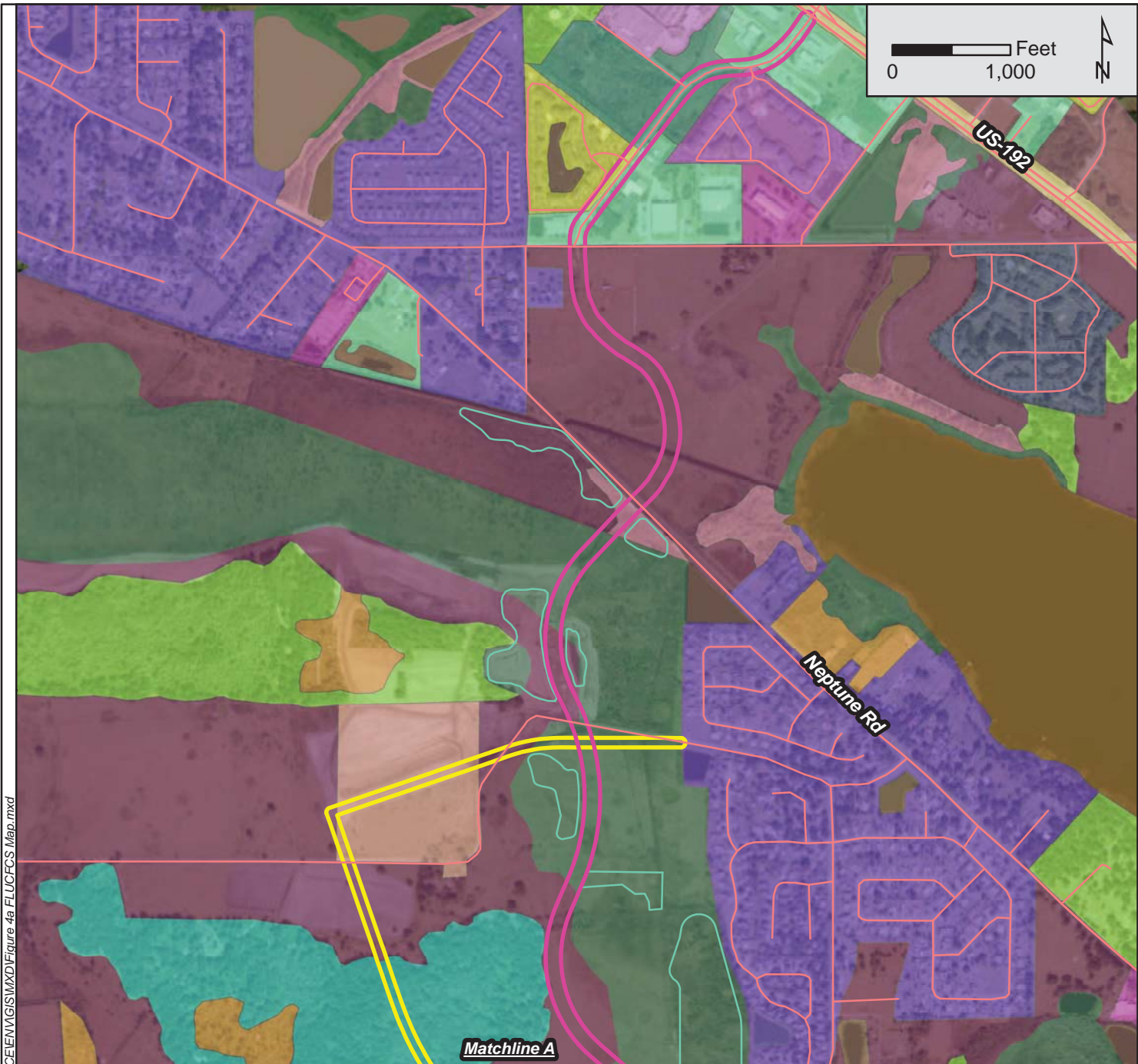
United States Geological Survey (USGS) Quadrangle Map
Cross Prairie Parkway (Tohoqua Parkway) and Tohoqua Parkway West
From US-192 to Friar's Cove Road
Osceola County, FL

1 inch = 4,788 feet

PROJECT NUMBER: 149244306

NOVEMBER 2016

FIGURE 2



K:\IVRB_Environmental\149244306 Tohoqua Pkwy USA\CEENV\GIS\IMXD\Figure 4a FLUCFCS Map.mxd

Legend

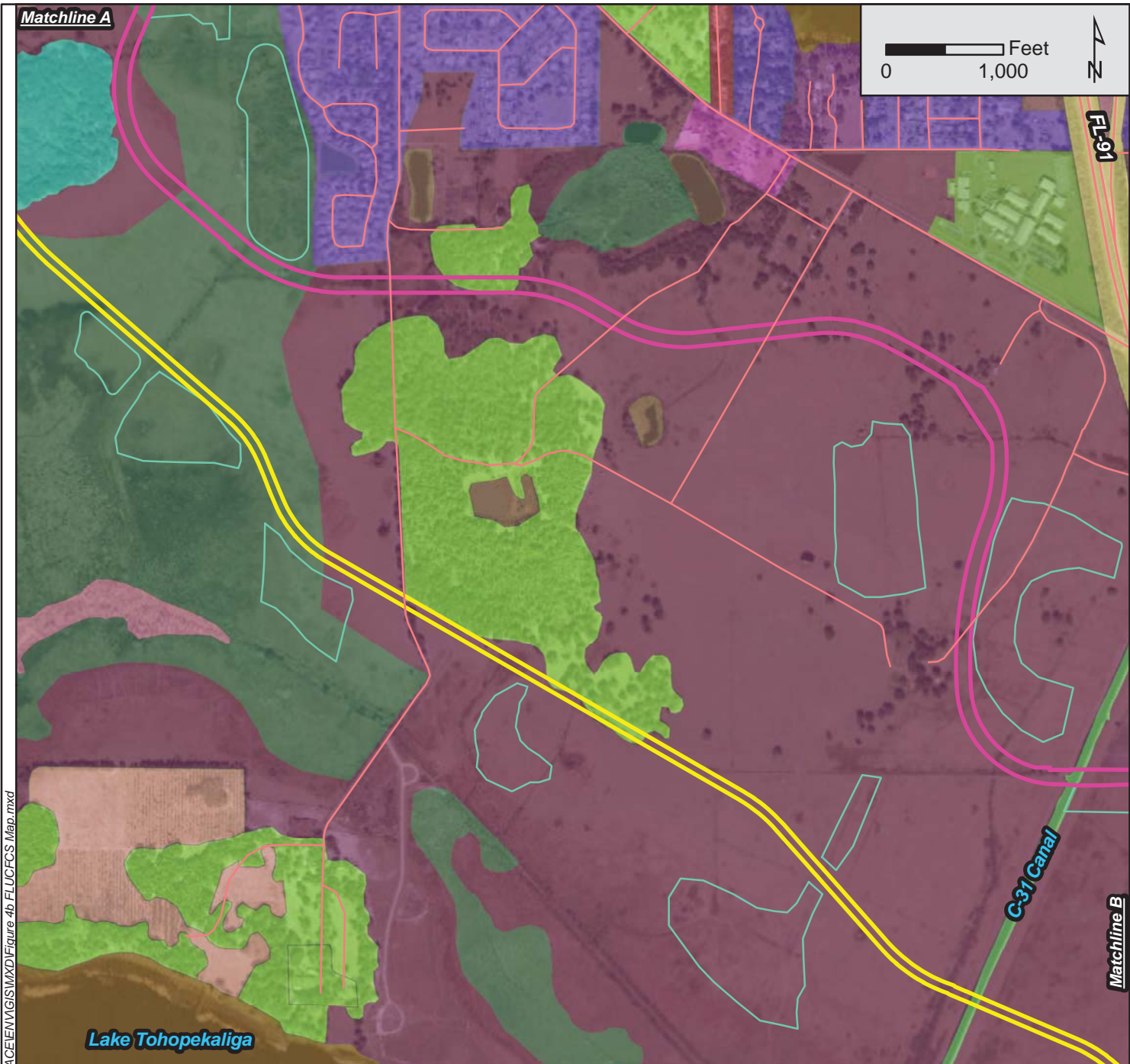
Cross Prairie Parkway (Tohoqua Parkway)	140: Commercial and Services	420: Upland Hardwood Forests
Tohoqua Parkway West	141: Retail Sales and Services	434: Hardwood-Conifer Mixed
Potential Stormwater Ponds	170: Institutional	520: Lakes
FLUCFCS Code: Description	211: Improved Pastures	530: Reservoirs
121: Fixed Single Family Units	212: Unimproved Pastures	617: Mixed Wetland Hardwoods
133: Multiple Dwelling Units, Low Rise	221: Citrus Groves	641: Freshwater Marshes
134: Multiple Dwelling Units, High Rise	310: Herbaceous (Dry Prairie)	740: Disturbed Lands
139: High Density Under Construction	320: Shrub and Brushland	814: Roads and Highways

Source: Aerials courtesy of ESRI; Habitat data courtesy of SFWMD



Florida Land Use, Cover, Forms and Classification System (FLUCFCS) Map
Cross Prairie Parkway (Tohoqua Parkway) and Tohoqua Parkway West
From US-192 to Friar's Cove Road
Osceola County, FL

1 inch = 1,250 feet	PROJECT NUMBER: 149244306	NOVEMBER 2016	FIGURE 4a
---------------------	---------------------------	---------------	-----------



K:\IVRB_Environmental\149244306 Tohoqua Parkway USACE\ENV\GIS\IMXD\Figure 4b FLUCFCS Map.mxd

Legend

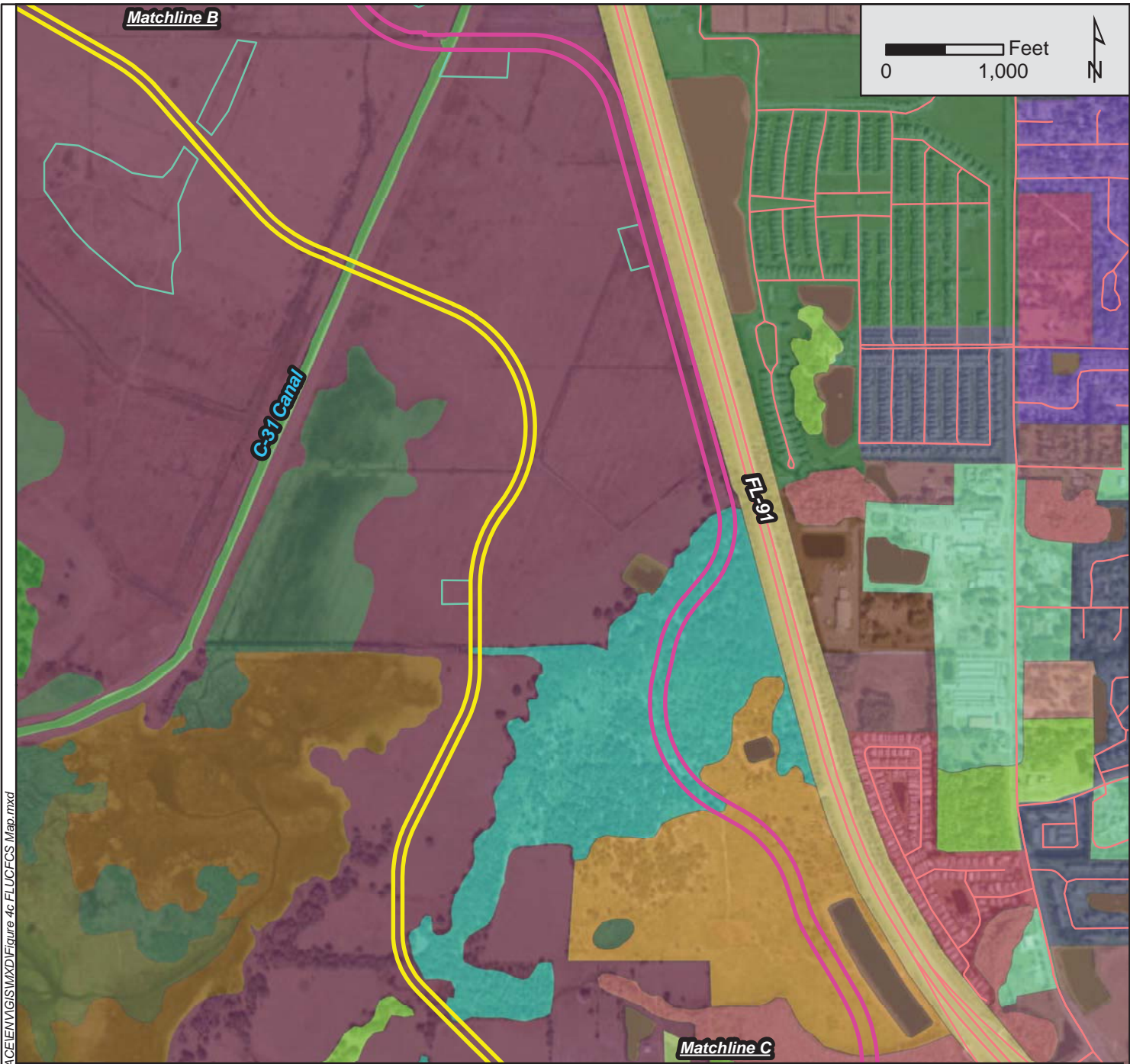
Cross Prairie Parkway (Tohoqua Parkway)	170: Institutional	434: Hardwood-Conifer Mixed
Tohoqua Parkway West	171: Educational Facilities	510: Streams and Waterways
Potential Stormwater Ponds	211: Improved Pastures	520: Lakes
FLUCFCS Code: Description	221: Citrus Groves	530: Reservoirs
121: Fixed Single Family Units	310: Herbaceous (Dry Prairie)	617: Mixed Wetland Hardwoods
132: Mobile Home Units, 6 or more dwellings	330: Mixed Rangeland	641: Freshwater Marshes
140: Commercial and Services	420: Upland Hardwood Forests	814: Roads and Highways
	427: Live Oak	

Source: Aerials courtesy of ESRI; Habitat data courtesy of SFWMD



Florida Land Use, Cover, Forms and Classification System (FLUCFCS) Map
Cross Prairie Parkway (Tohoqua Parkway) and Tohoqua Parkway West
From US-192 to Friar's Cove Road
Osceola County, FL

1 inch = 1,250 feet	PROJECT NUMBER: 149244306	NOVEMBER 2016	FIGURE 4b
---------------------	---------------------------	---------------	-----------



K:\VRB_Environmental\149244306 Tohoqua Parkway\GIS\IMXD\Figure 4c FLUCFCS Map.mxd

Legend

Cross Prairie Parkway (Tohoqua Parkway)	149: Commercial and Services Under Construction	434: Hardwood-Conifer Mixed
Tohoqua Parkway West	211: Improved Pastures	510: Streams and Waterways
Potential Stormwater Ponds	212: Unimproved Pastures	520: Lakes
FLUCFCS Code: Description		
121: Fixed Single Family Units	215: Field Crops	530: Reservoirs
132: Mobile Home Units, 6 or more dwellings	221: Citrus Groves	617: Mixed Wetland Hardwoods
133: Multiple Dwelling Units, Low Rise	223: Other Groves	621: Cypress
139: High Density Under Construction	310: Herbaceous (Dry Prairie)	641: Freshwater Marshes
140: Commercial and Services	411: Pine Flatwoods	644: Emergent Aquatic Vegetation
	420: Upland Hardwood Forests	814: Roads and Highways
	427: Live Oak	

Source: Aerials courtesy of ESRI; Habitat data courtesy of SFWMD



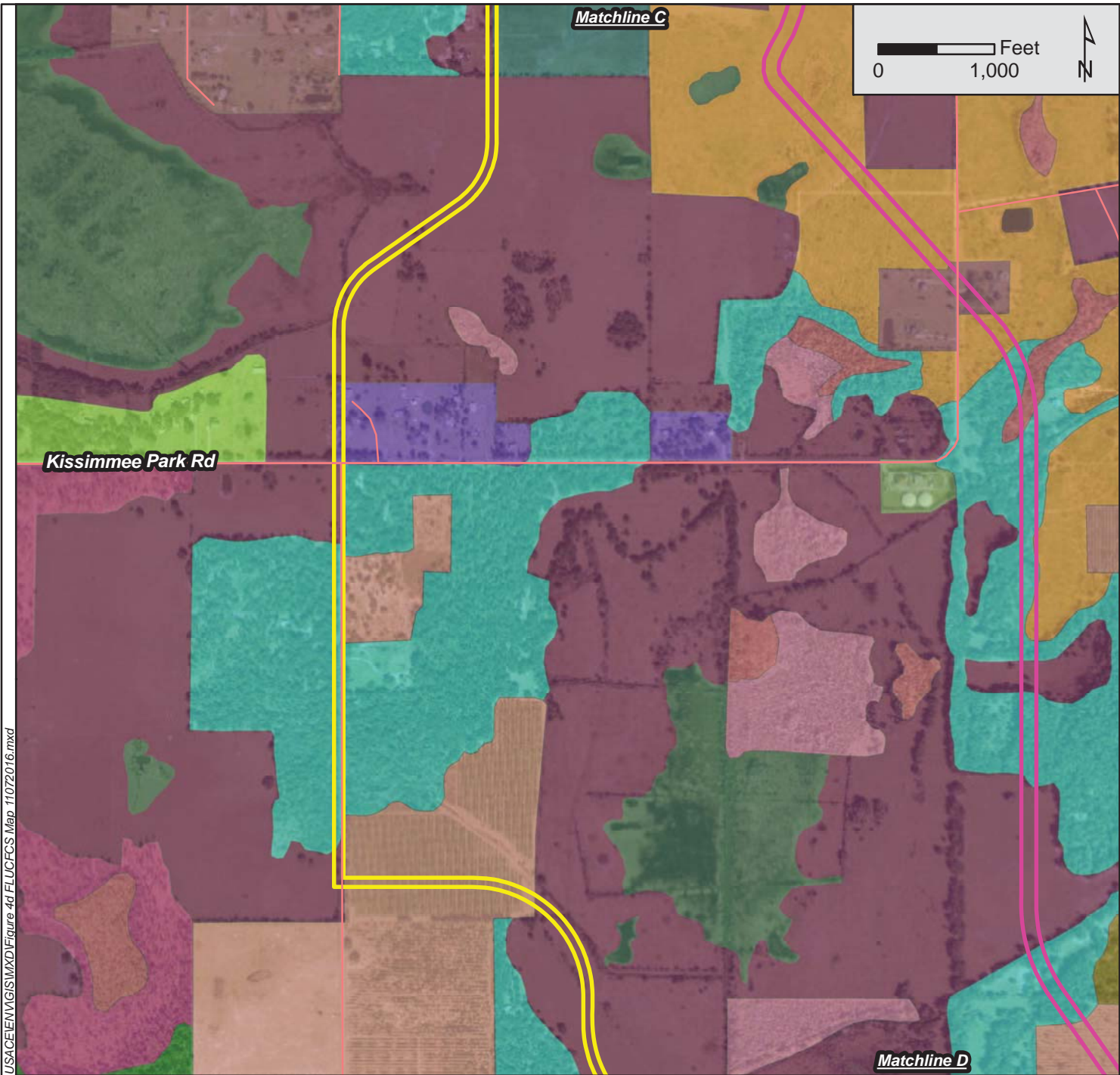
Florida Land Use, Cover, Forms and Classification System (FLUCFCS) Map
Cross Prairie Parkway (Tohoqua Parkway) and Tohoqua Parkway West
From US-192 to Friar's Cove Road
Osceola County, FL

1 inch = 1,250 feet

PROJECT NUMBER: 149244306

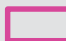





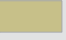





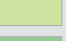



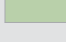


NOVEMBER 2016

FIGURE 4c



K:\VRB_Environmental\149244306 Tohoqua Pkway\USA\ENV\GIS\IMXD\Figure 4d FLUCFCS Map_11072016.mxd

Legend

 Cross Prairie Parkway (Tohoqua Parkway)	 221: Citrus Groves	 520: Lakes
 Tohoqua Parkway West	 310: Herbaceous (Dry Prairie)	 530: Reservoirs
FLUCFCS Code: Description	 321: Palmetto Prairies	 617: Mixed Wetland Hardwoods
 121: Fixed Single Family Units	 411: Pine Flatwoods	 621: Cypress
 211: Improved Pastures	 420: Upland Hardwood Forests	 641: Freshwater Marshes
 212: Unimproved Pastures	 427: Live Oak	 833: Water Supply Plants
 215: Field Crops	 434: Hardwood-Conifer Mixed	

Source: Aerials courtesy of ESRI; Habitat data courtesy of SFWMD



Florida Land Use, Cover, Forms and Classification System (FLUCFCS) Map
Cross Prairie Parkway (Tohoqua Parkway) and Tohoqua Parkway West
From US-192 to Friar's Cove Road
Osceola County, FL

1 inch = 1,250 feet

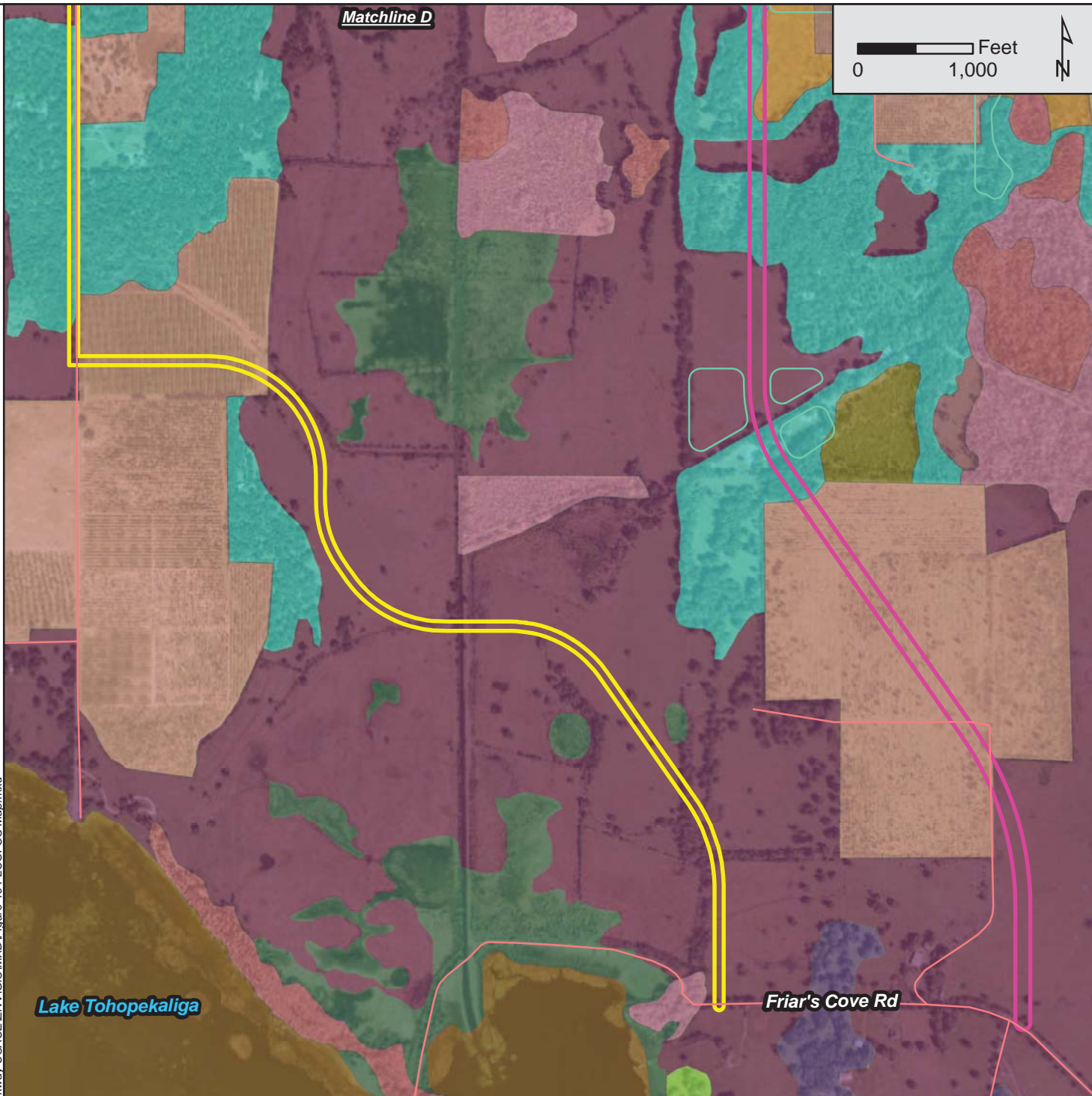
PROJECT NUMBER: 149244306

NOVEMBER 2016

FIGURE 4d

Matchline D


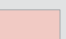
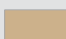

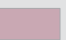
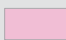
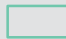
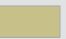

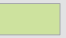
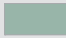

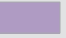
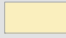

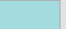
0 1,000 Feet



Lake Tohopekaliga

Friar's Cove Rd

Legend

 Cross Prairie Parkway (Tohoqua Parkway)	 221: Citrus Groves	 520: Lakes
 Tohoqua Parkway West	 310: Herbaceous (Dry Prairie)	 617: Mixed Wetland Hardwoods
 Potential Stormwater Ponds	 321: Palmetto Prairies	 621: Cypress
FLUCFCS Code: Description	 420: Upland Hardwood Forests	 641: Freshwater Marshes
 211: Improved Pastures	 421: Xeric Oak	 814: Roads and Highways
 212: Unimproved Pastures	 434: Hardwood-Conifer Mixed	

Source: Aerials courtesy of ESRI; Habitat data courtesy of SFWMD



Florida Land Use, Cover, Forms and Classification System (FLUCFCS) Map
Cross Prairie Parkway (Tohoqua Parkway) and Tohoqua Parkway West
From US-192 to Friar's Cove Road
Osceola County, FL

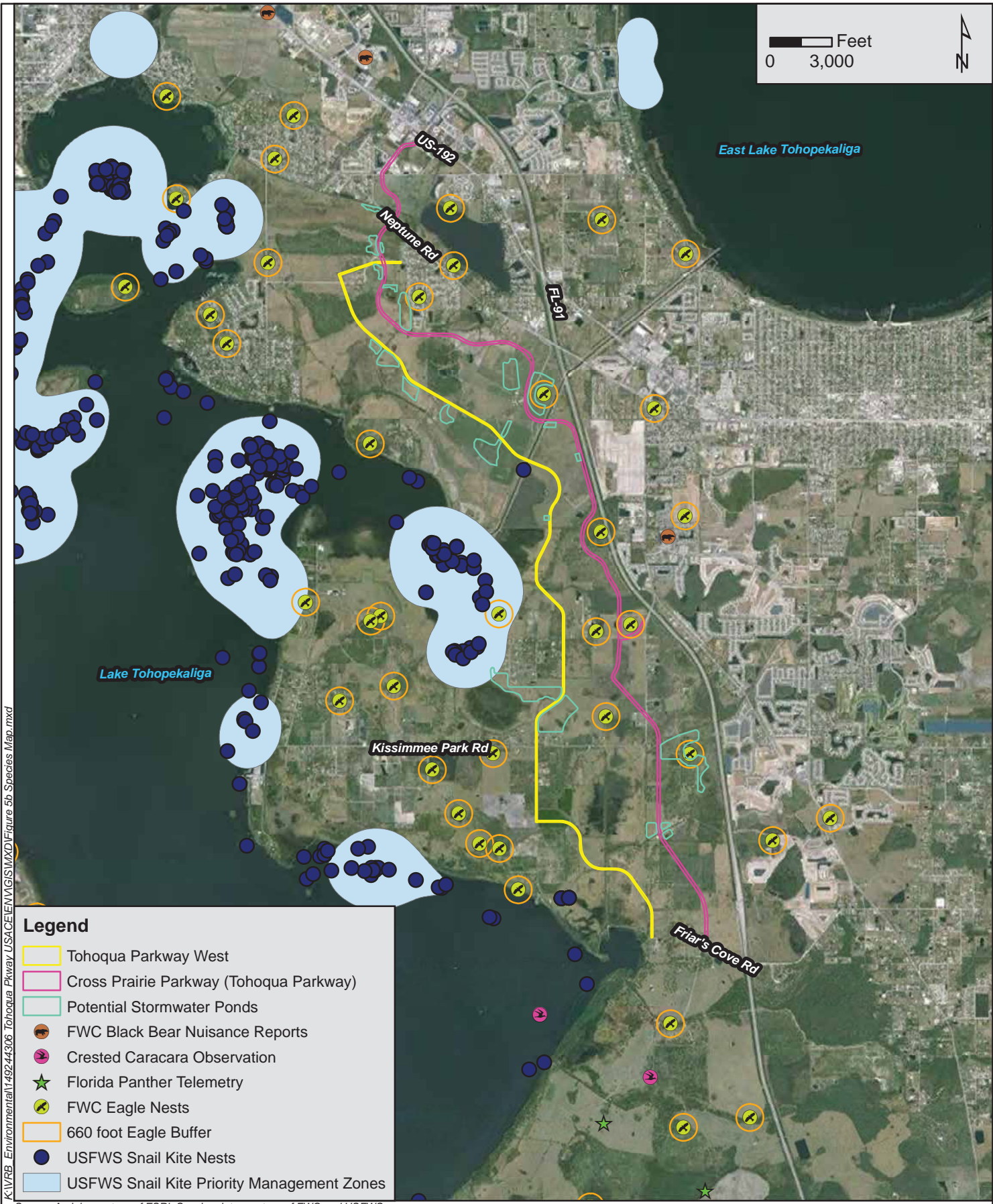
1 inch = 1,250 feet

PROJECT NUMBER: 149244306

NOVEMBER 2016

FIGURE 4e

K:\IVRB_Environmental\149244306_Tohoqua Pkwy\USACE\ENV\GIS\IMXD\Figure 4e FLUCFCS Map.mxd



K:\IVRB_Environmental\149244306_Tohoqua Pkwy\USACE\ENV\GIS\IMXD\Figure 5b Species Map.mxd


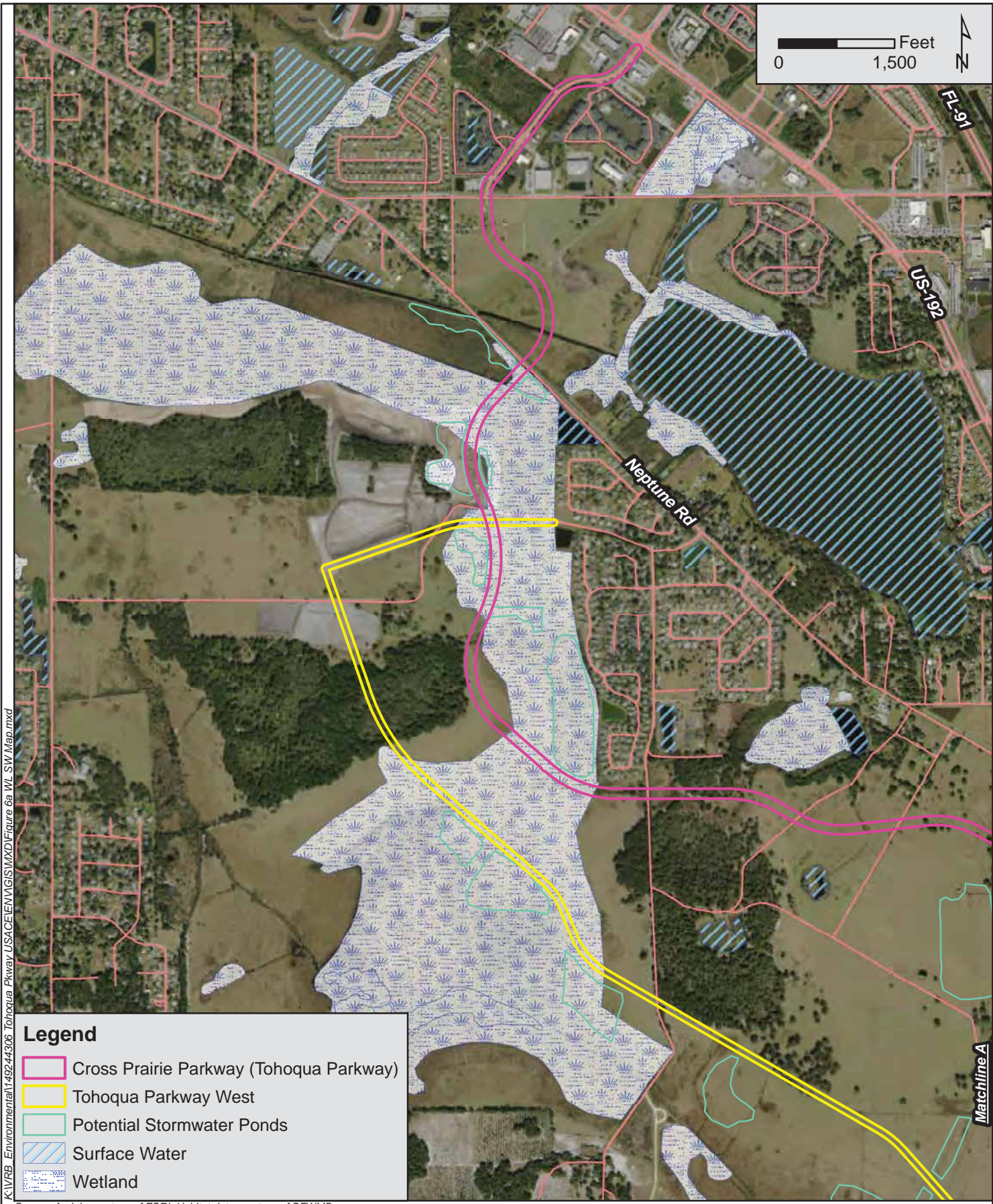
	Listed Species Map Cross Prairie Parkway (Tohoqua Parkway) and Tohoqua Parkway West From US-192 to Friar's Cove Road Osceola County, FL		
	1 inch = 6,250 feet	PROJECT NUMBER: 149244306	NOVEMBER 2016

FIGURE 5



K:\IVRB_Environmental\149244306 Tohoqua Pkwy\USACE\ENV\GIS\IMXD\Figure 6a W SW Map.mxd

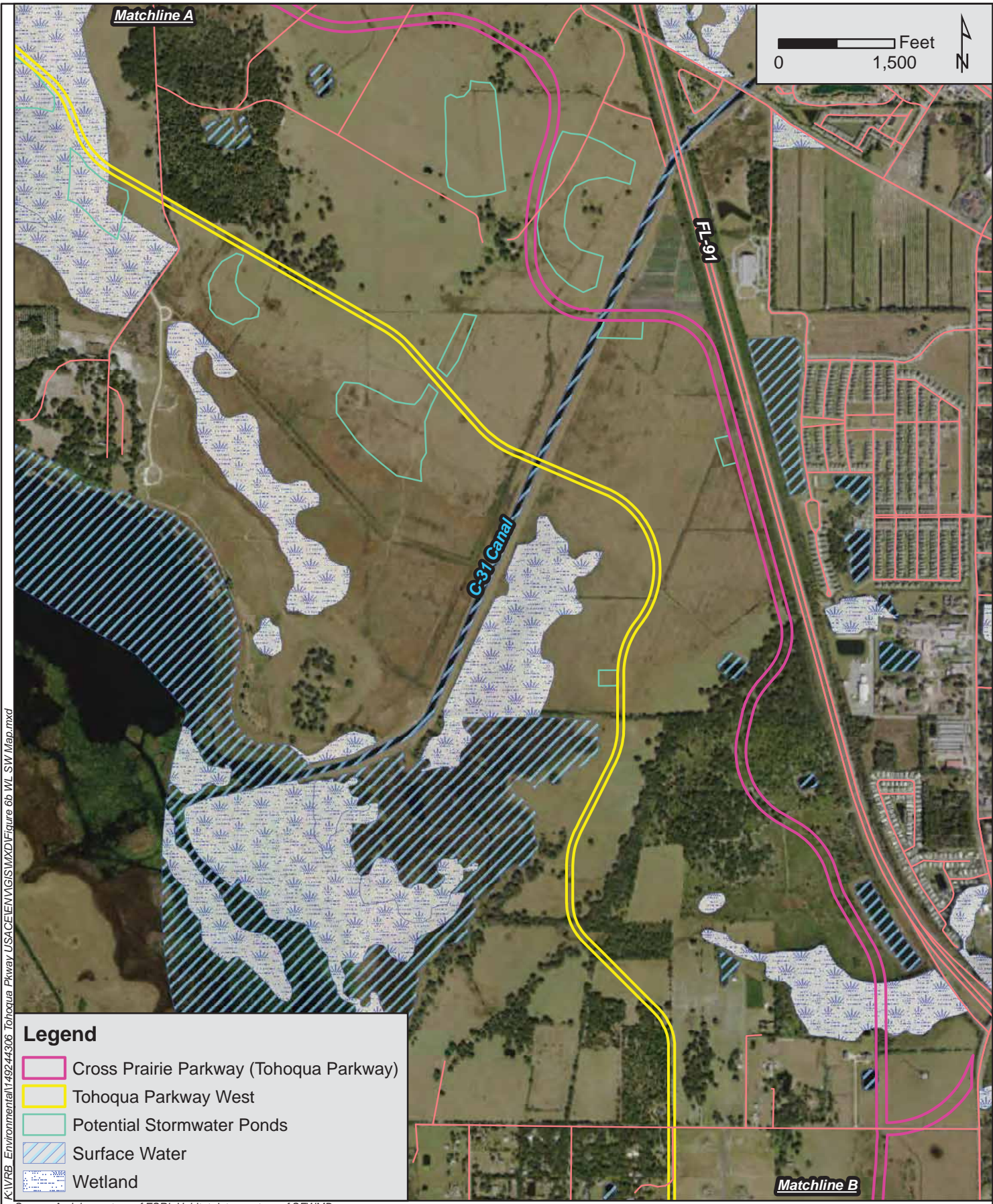
Legend

- Cross Prairie Parkway (Tohoqua Parkway)
- Tohoqua Parkway West
- Potential Stormwater Ponds
- Surface Water
- Wetland

Source: Aerials courtesy of ESRI; Habitat data courtesy of SFWMD



Wetlands and Surface Waters Map			
Cross Prairie Parkway (Tohoqua Parkway) and Tohoqua Parkway West From US-192 to Friar's Cove Road Osceola County, FL			
1 inch = 1,667 feet	PROJECT NUMBER: 149244306	NOVEMBER 2016	FIGURE 6a



Legend

- Cross Prairie Parkway (Tohoqua Parkway)
- Tohoqua Parkway West
- Potential Stormwater Ponds
- Surface Water
- Wetland

K:\IVRB_Environmental\149244306 Tohoqua Pkwy\USACE\ENV\GIS\IMXD\Figure 6b WL SW Map.mxd

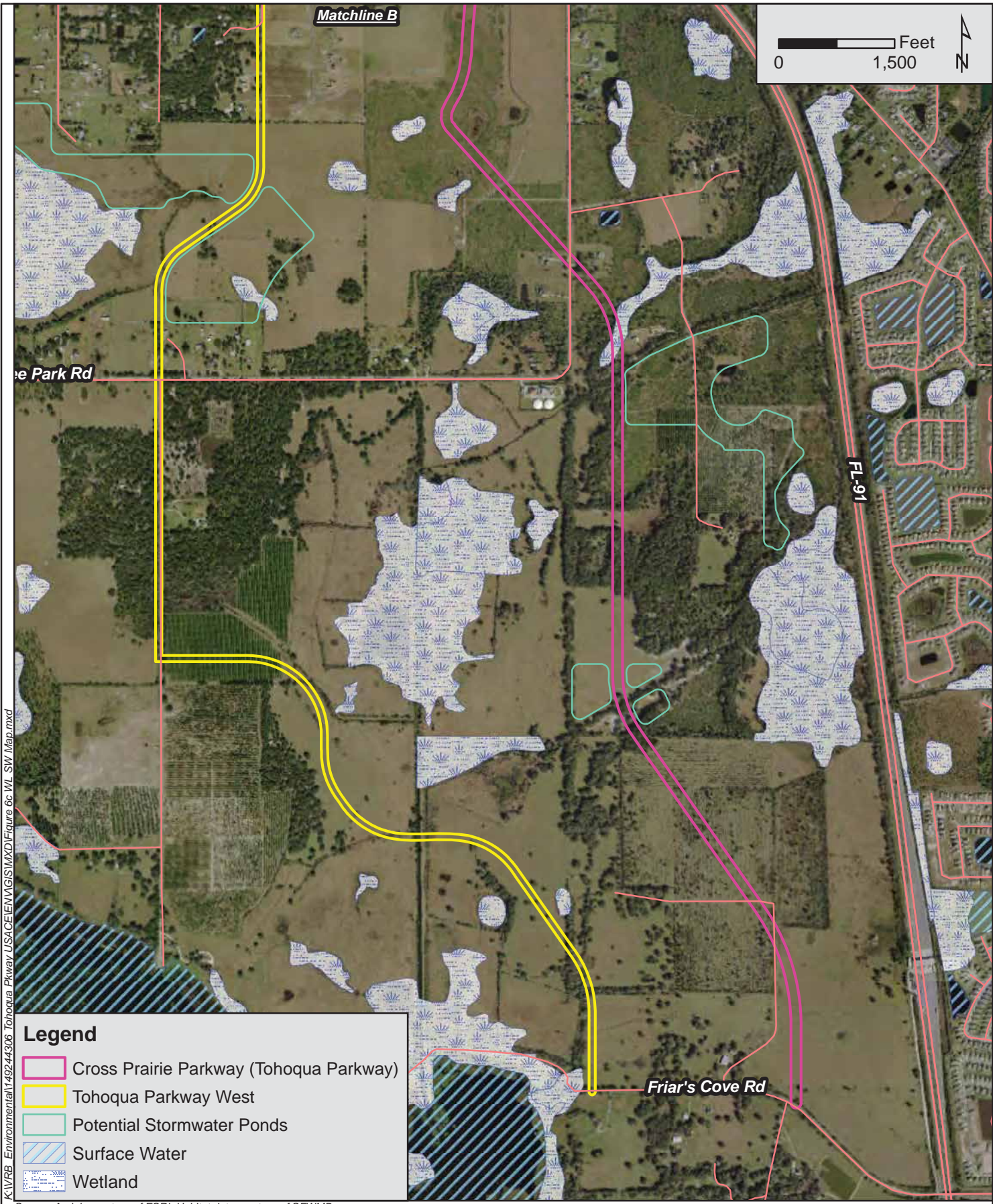
Source: Aerials courtesy of ESRI; Habitat data courtesy of SFWMD



Wetlands and Surface Waters Map

Cross Prairie Parkway (Tohoqua Parkway) and Tohoqua Parkway West
From US-192 to Friar's Cove Road
Osceola County, FL

1 inch = 1,667 feet	PROJECT NUMBER: 149244306	NOVEMBER 2016	FIGURE 6b
---------------------	---------------------------	---------------	-----------




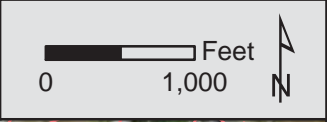
K:\VRB_Environmental\149244306 Tohoqua Pkway USACE\ENV\GIS\IMXD\Figure 6c WL SW Map.mxd

Legend

- Cross Prairie Parkway (Tohoqua Parkway)
- Tohoqua Parkway West
- Potential Stormwater Ponds
- Surface Water
- Wetland

Source: Aerials courtesy of ESRI; Habitat data courtesy of SFWMD

	Wetlands and Surface Waters Map Cross Prairie Parkway (Tohoqua Parkway) and Tohoqua Parkway West From US-192 to Friar's Cove Road Osceola County, FL		
	1 inch = 1,667 feet	PROJECT NUMBER: 149244306	NOVEMBER 2016
		FIGURE 6c	



Kindred DRI
 *Impacts permitted under ERP 49-02180-P
 **Current Enforcement action with EPA & USACE

Legend

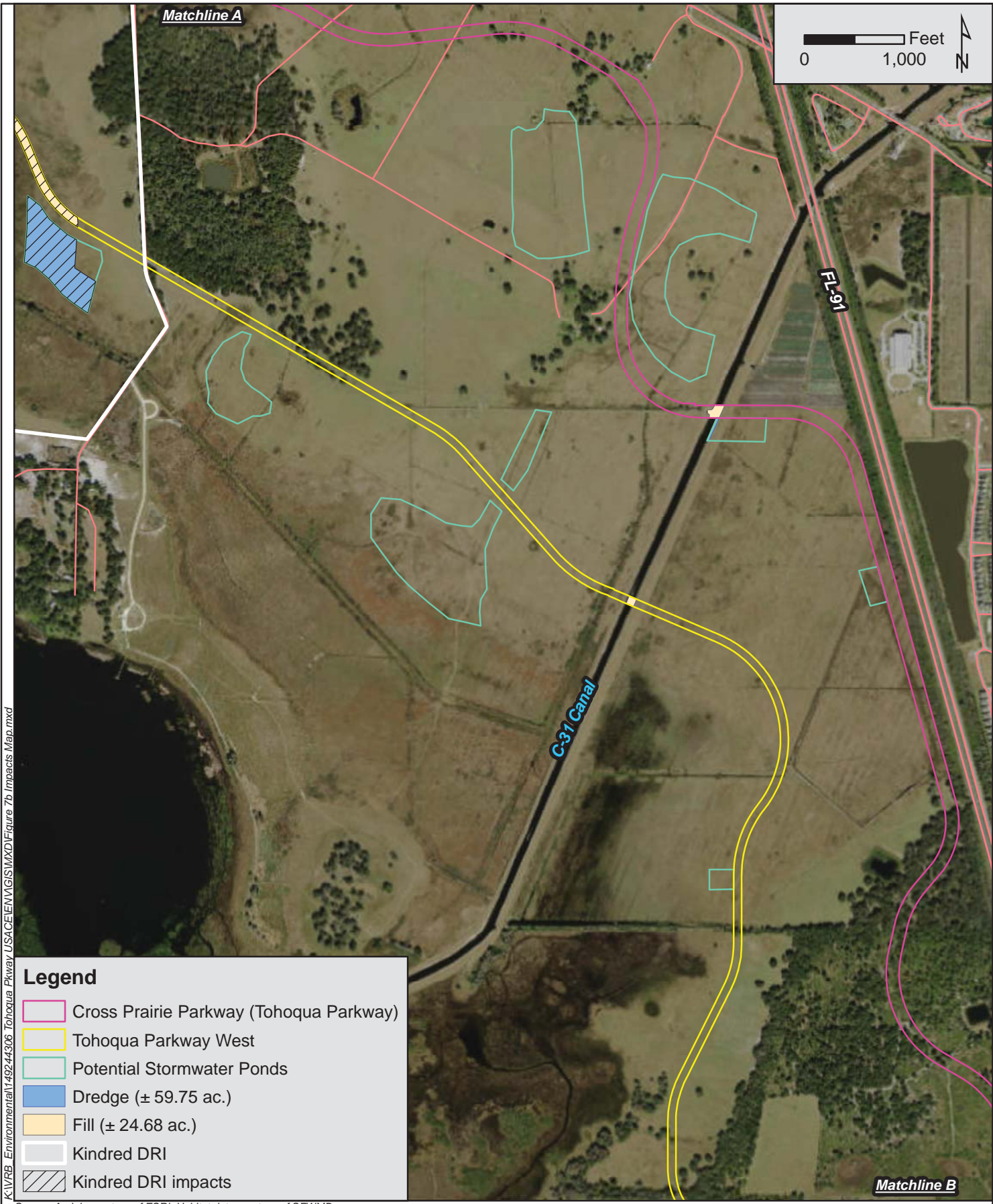
- Cross Prairie Parkway (Tohoqua Parkway)
- Tohoqua Parkway West
- Potential Stormwater Ponds
- Dredge (± 59.75 ac.)
- Fill (± 24.68 ac.)
- Kindred DRI
- Kindred DRI impacts

K:\VRB_Environmental\149244306 Tohoqua Pkwy\USACE\ENV\GIS\MXD\Figure 7a Impacts Map.mxd

Source: Aerials courtesy of ESRI; Habitat data courtesy of SFWMD



Wetlands and Surface Waters Impacts Map			
Cross Prairie Parkway (Tohoqua Parkway) and Tohoqua Parkway West From US-192 to Friar's Cove Road Osceola County, FL			
1 inch = 1,292 feet	PROJECT NUMBER: 149244306	NOVEMBER 2016	FIGURE 7a



K:\VRB_Environmental\149244306 Tohoqua Pkwy\USACE\ENV\GIS\IMXD\Figure 7b Impacts Map.mxd

Legend

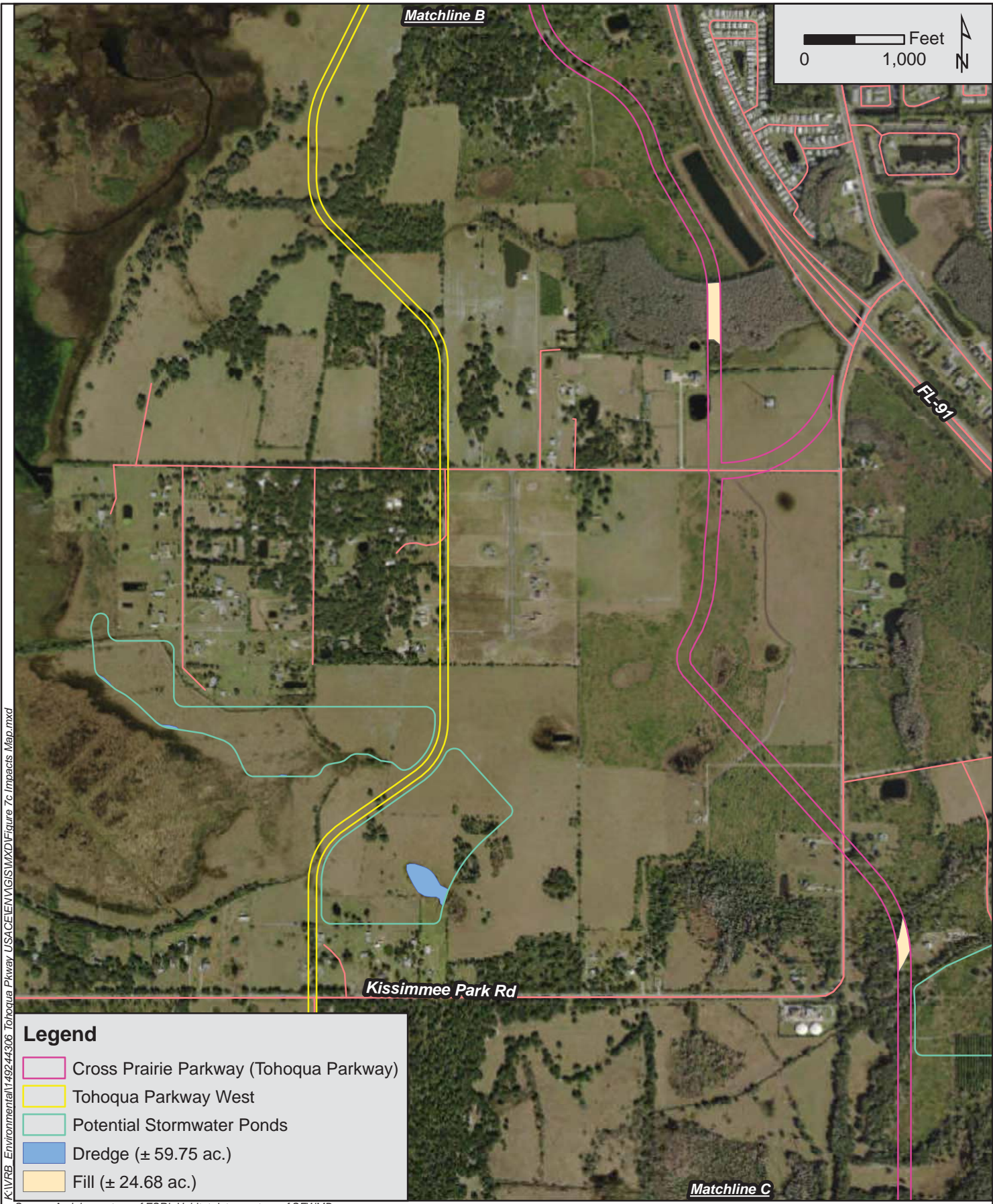
- Cross Prairie Parkway (Tohoqua Parkway)
- Tohoqua Parkway West
- Potential Stormwater Ponds
- Dredge (± 59.75 ac.)
- Fill (± 24.68 ac.)
- Kindred DRI
- Kindred DRI impacts

Source: Aerials courtesy of ESRI; Habitat data courtesy of SFWMD



Wetlands and Surface Waters Impacts Map
Cross Prairie Parkway (Tohoqua Parkway) and Tohoqua Parkway West
From US-192 to Friar's Cove Road
Osceola County, FL

1 inch = 1,292 feet	PROJECT NUMBER: 149244306	NOVEMBER 2016	FIGURE 7b
---------------------	---------------------------	---------------	-----------



K:\IVRB_Environmental\149244306 Tohoqua Pkwy USACE\ENV\GIS\IMXD\Figure 7c Impacts Map.mxd

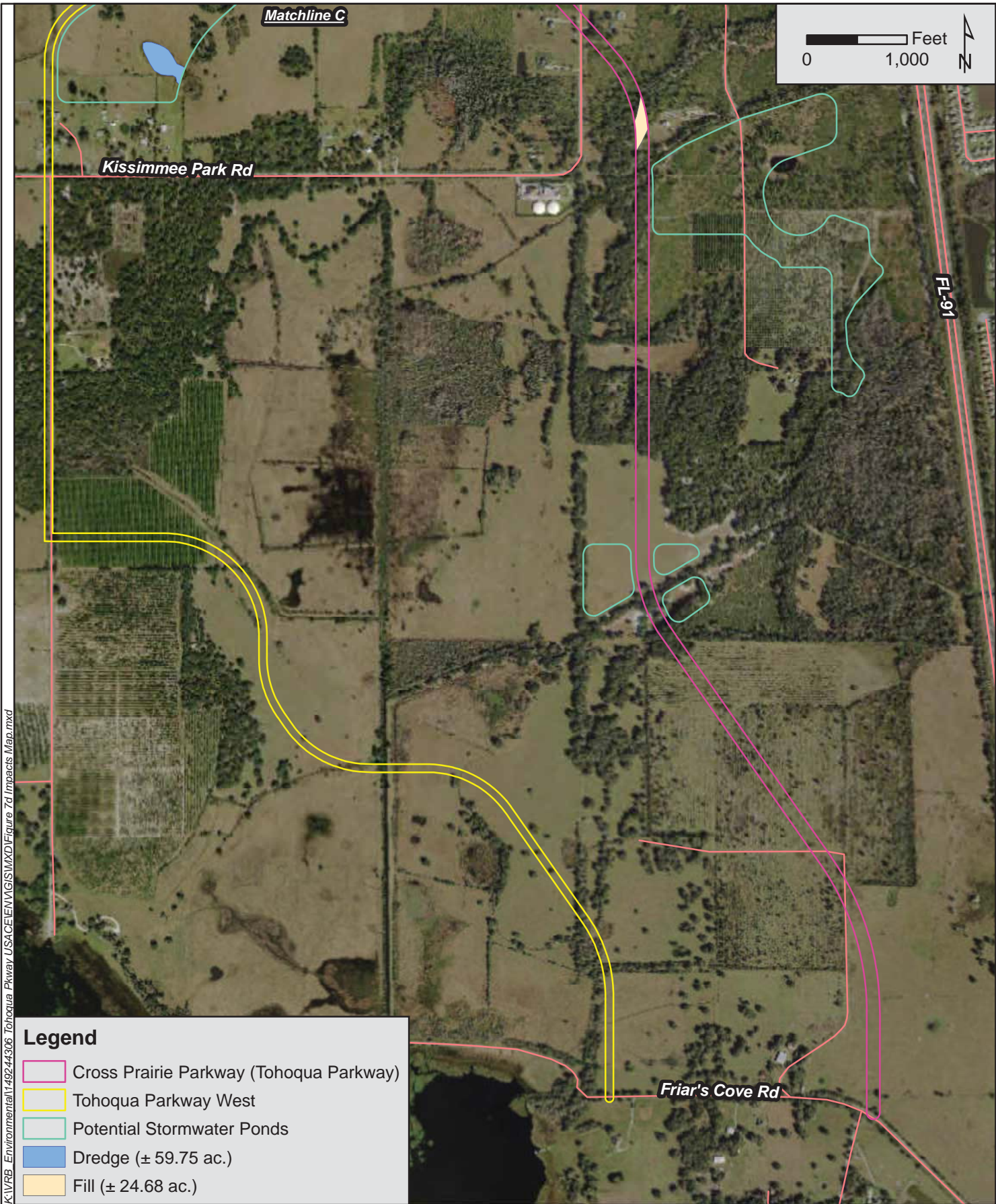
Legend

- Cross Prairie Parkway (Tohoqua Parkway)
- Tohoqua Parkway West
- Potential Stormwater Ponds
- Dredge (± 59.75 ac.)
- Fill (± 24.68 ac.)

Source: Aerials courtesy of ESRI; Habitat data courtesy of SFWMD



Wetlands and Surface Waters Impacts Map			
Cross Prairie Parkway (Tohoqua Parkway) and Tohoqua Parkway West From US-192 to Friar's Cove Road Osceola County, FL			
1 inch = 1,292 feet	PROJECT NUMBER: 149244306	NOVEMBER 2016	FIGURE 7c



Wetlands and Surface Waters Impacts Map
Cross Prairie Parkway (Tohoqua Parkway) and Tohoqua Parkway West
From US-192 to Friar's Cove Road
Osceola County, FL

1 inch = 1,292 feet

PROJECT NUMBER: 149244306

NOVEMBER 2016

FIGURE 7d

Figure 6. Multi-modal Corridor

